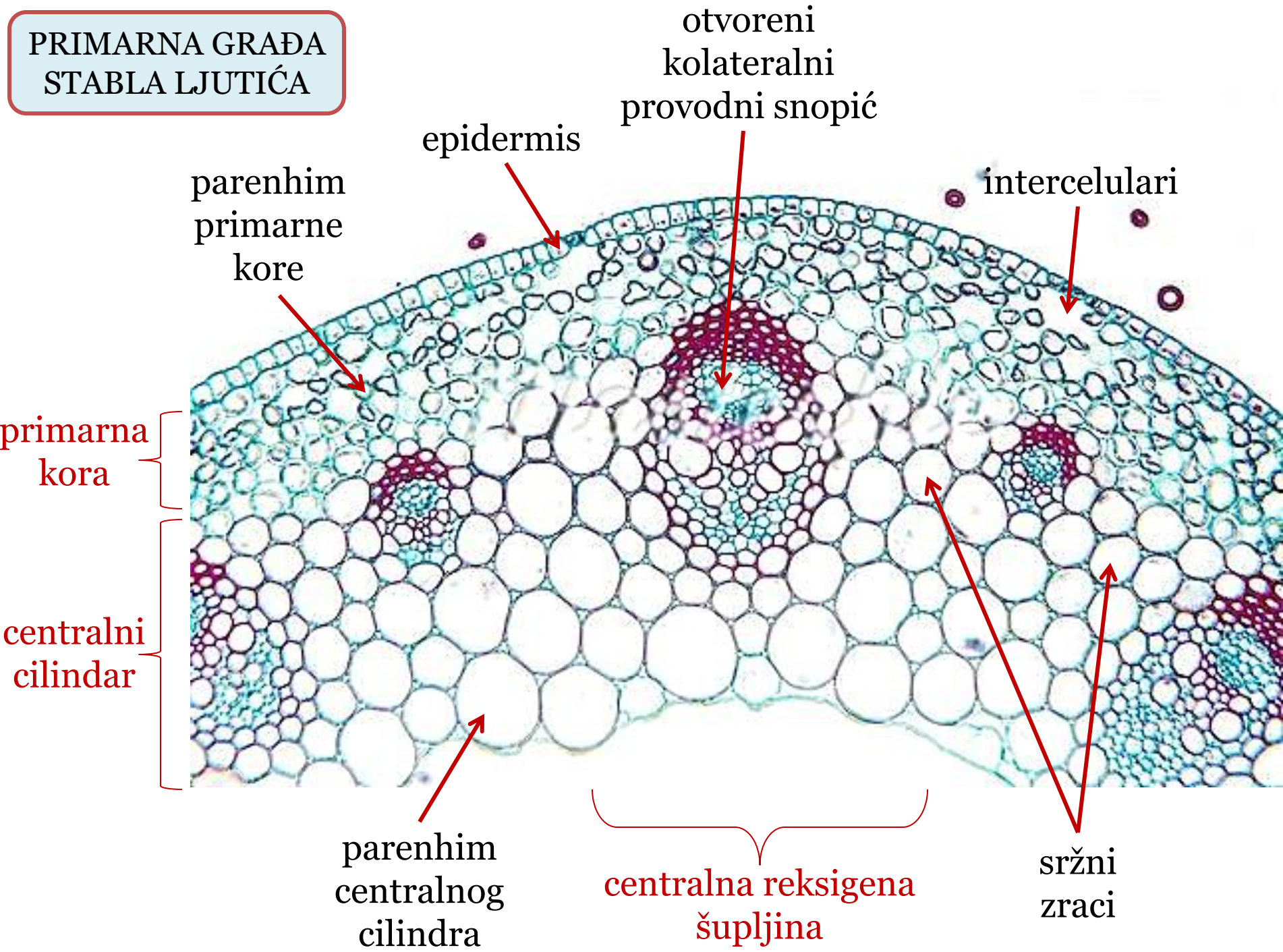


**PRIMARNA GRAĐA
STABLA LJUTIĆA**

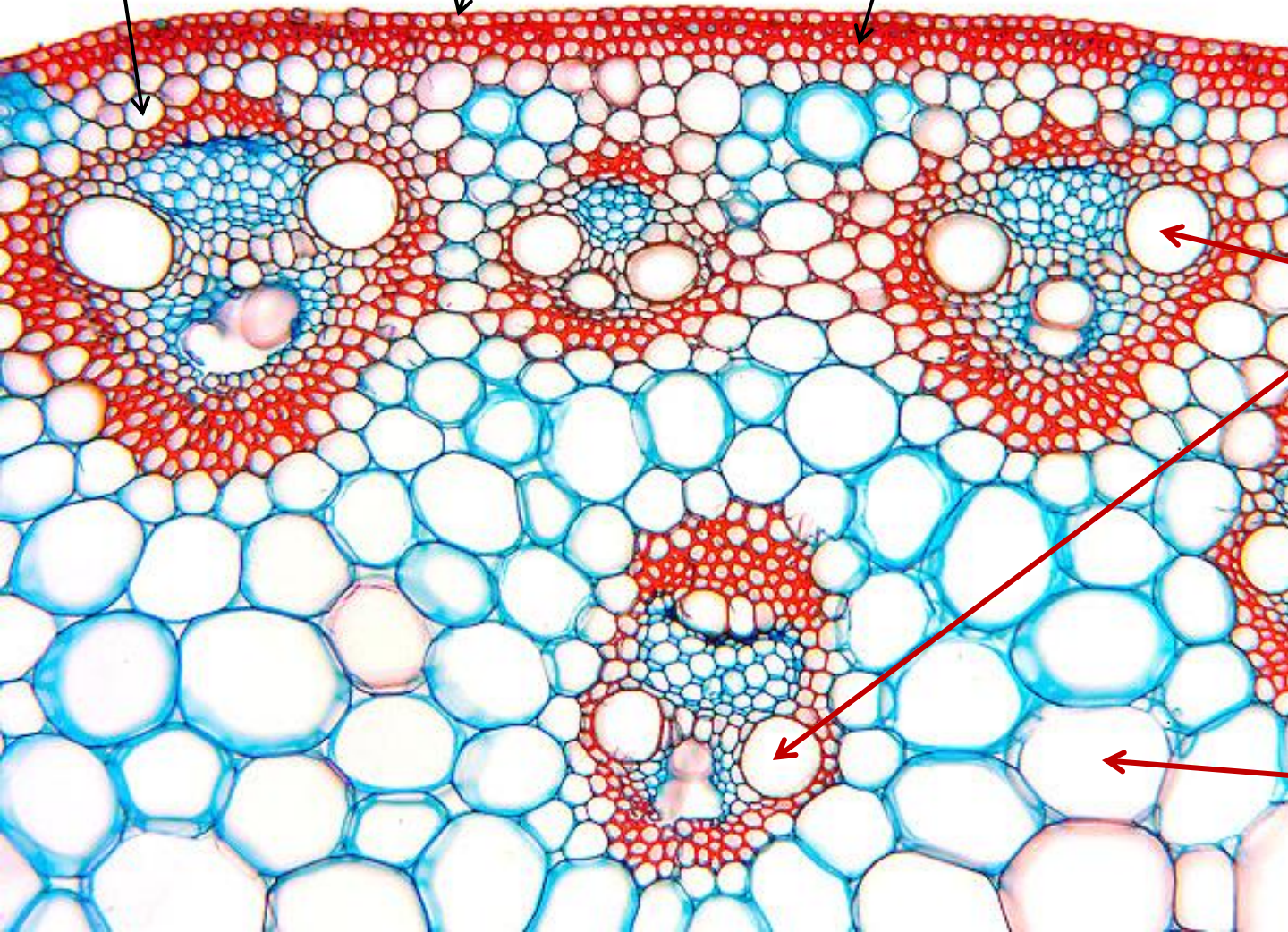


PRIMARNA GRAĐA
STABLA KUKURUZA

parenhim
primarne
kore

epidermis

hipodermis



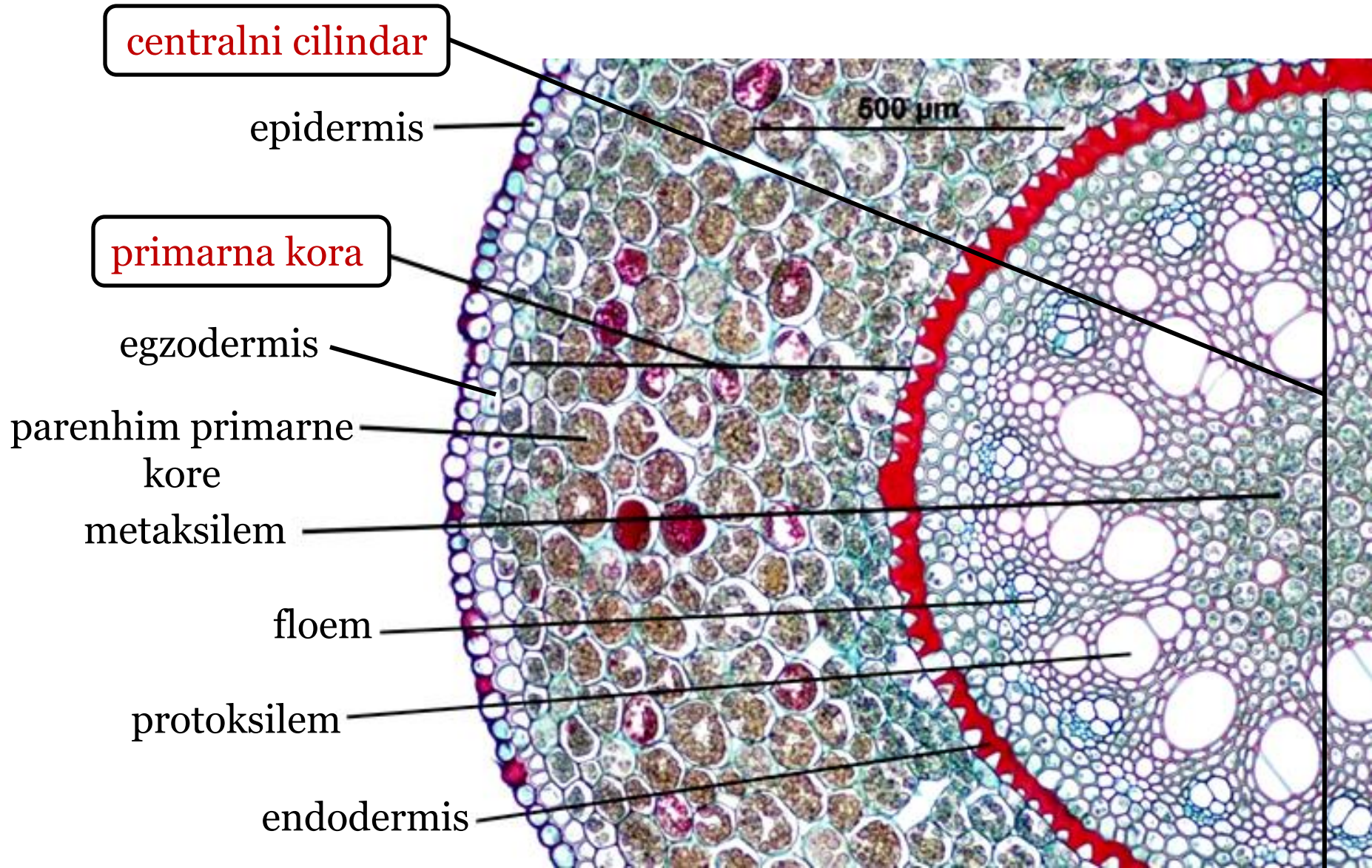
primarna
kora

zatvoreni
kolateralni
provodni snopići

centralni
cilindar

parenhim
centralnog
cilindra

PRIMARNA GRAĐA KORIJENA



RADIJALNI PROVODNI SNOPIĆ

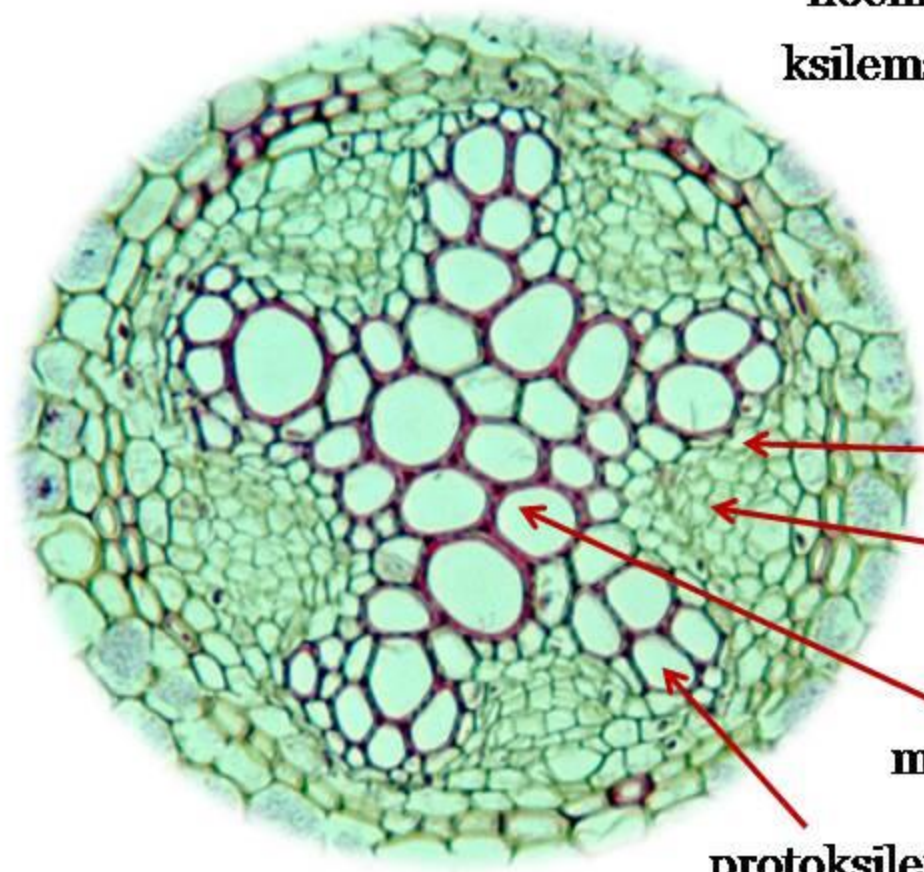
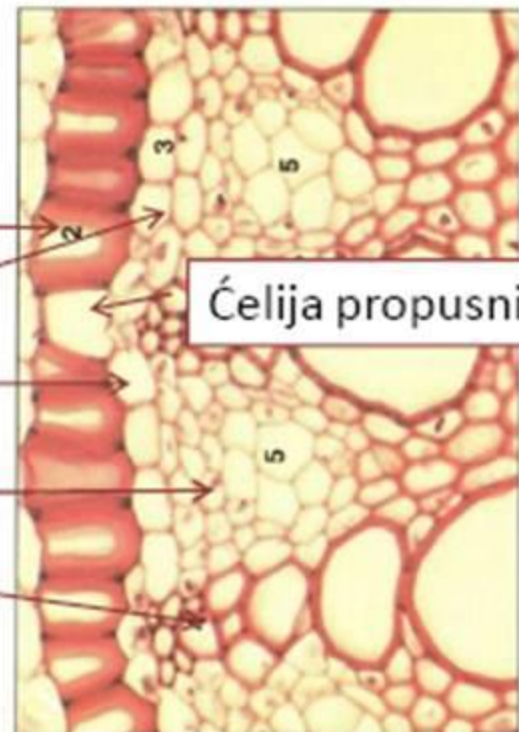
endodermis

pericikl

floemska ploča

ksilemska ploča

Ćelija propusnica



provodni parenhim

floem

metaksilem

protoksilem