

Regnum: MYCOTA

Divisio: MYXOMYCOTA

Classis: MYXOMYCETES

Ordo: LICEALES

Lycogala epidendrum

Ordo: TRICHIALES

Arcyria sp.

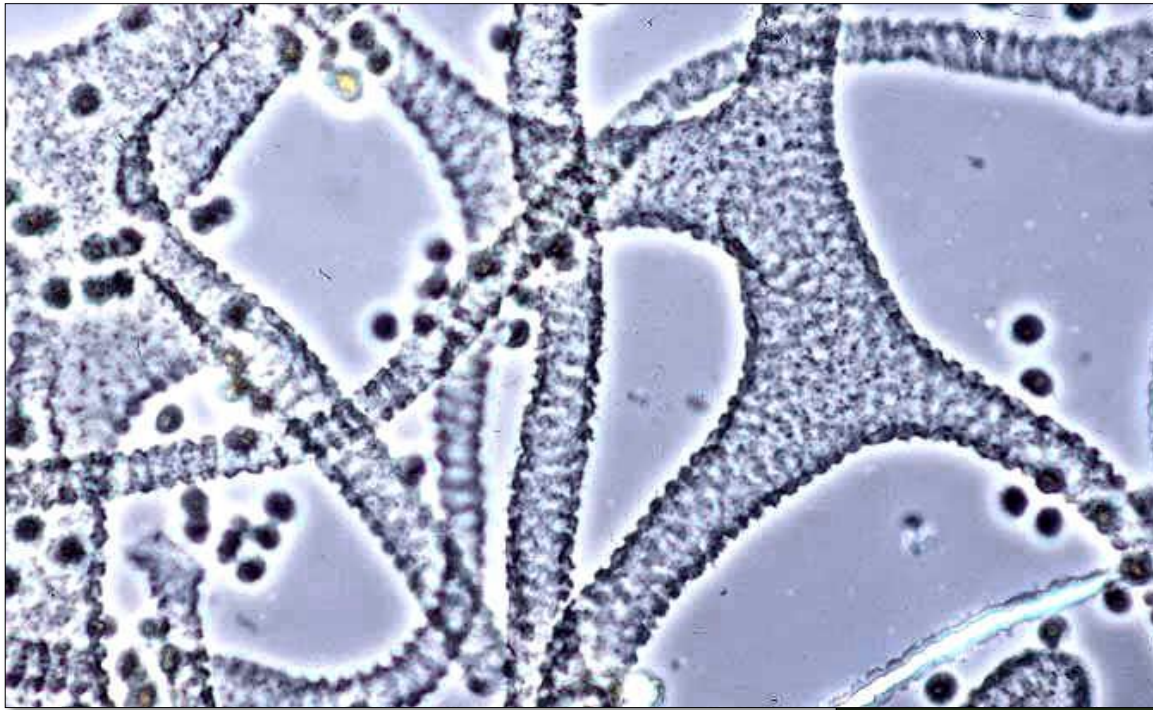
Classis: PLASMIDIOPHOROMYCETES

Ordo: PLASMIDIOPHORALES

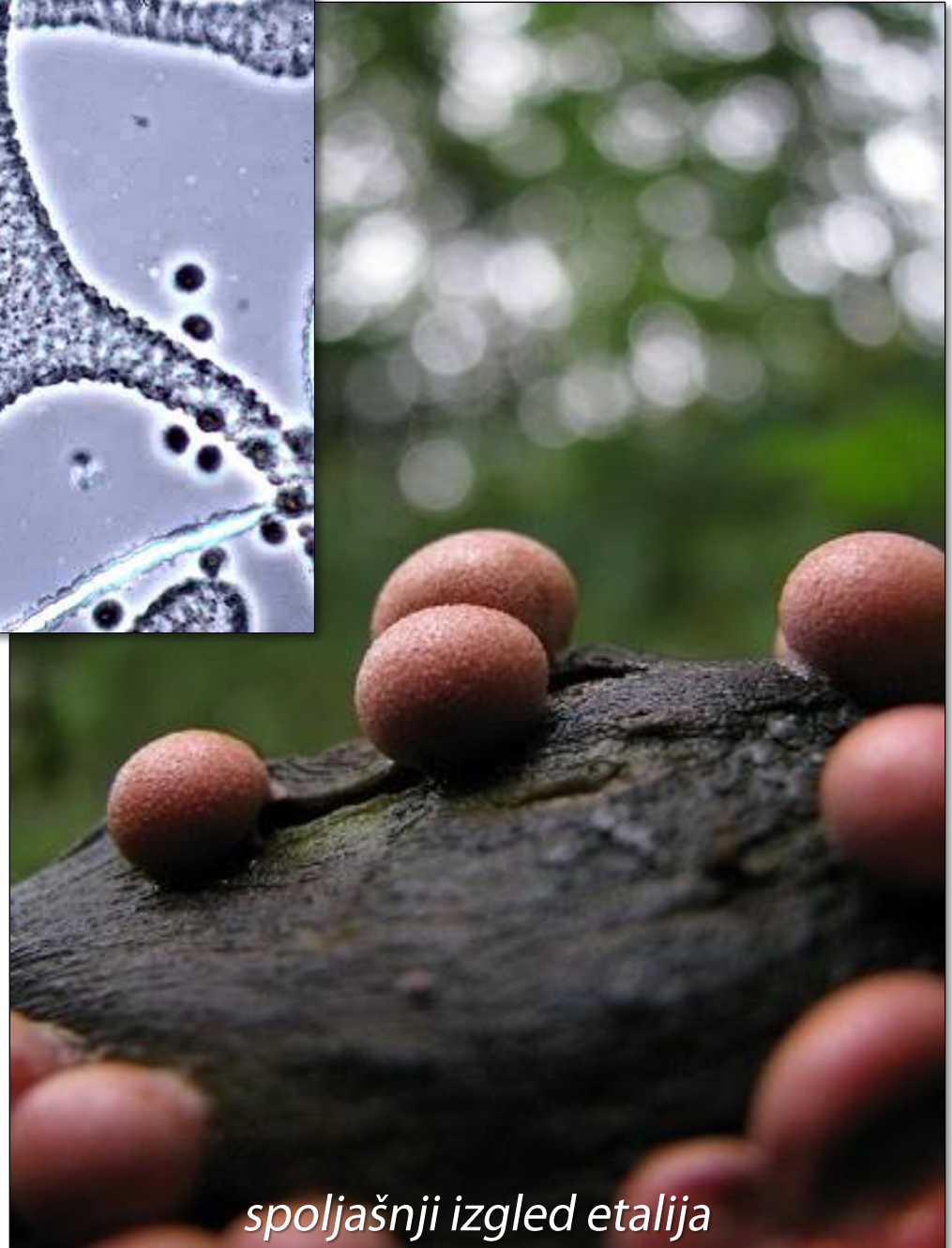
Plasmodiophora brassicae

Divisio: EUMYCOTA

- septirana micelija
- neseptirana micelija
- presjek kroz sklerociju
- bespolne spore:
 - jednoćelijske konidije
 - septirane konidije
 - jednoćelijske teliospore
 - dvoćelijske teliospore
 - višećelijske teliospore
 - uredospore

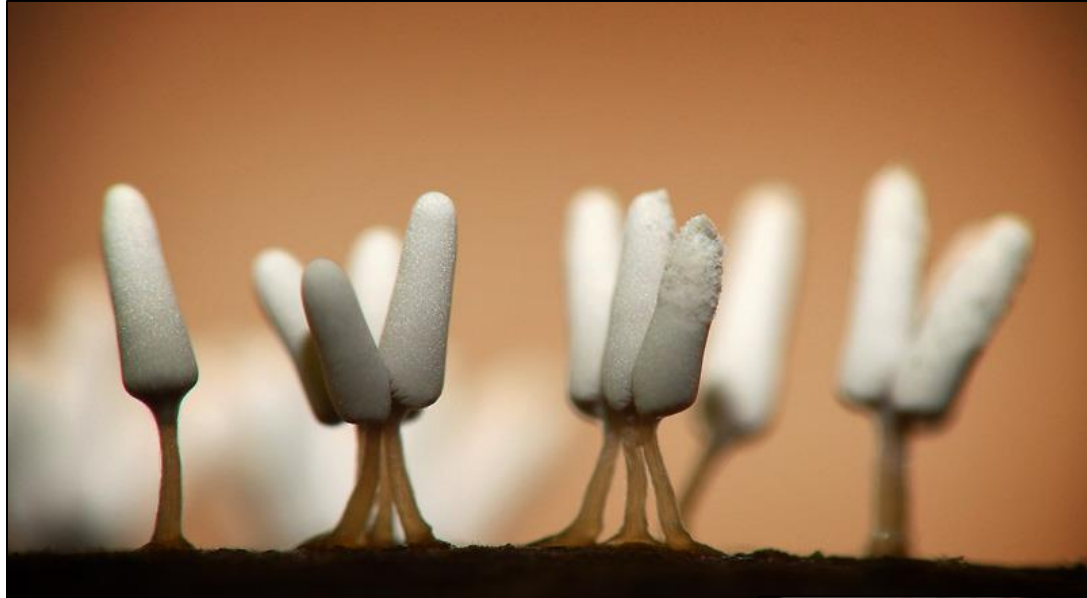


presjek kroz centralni dio etalije

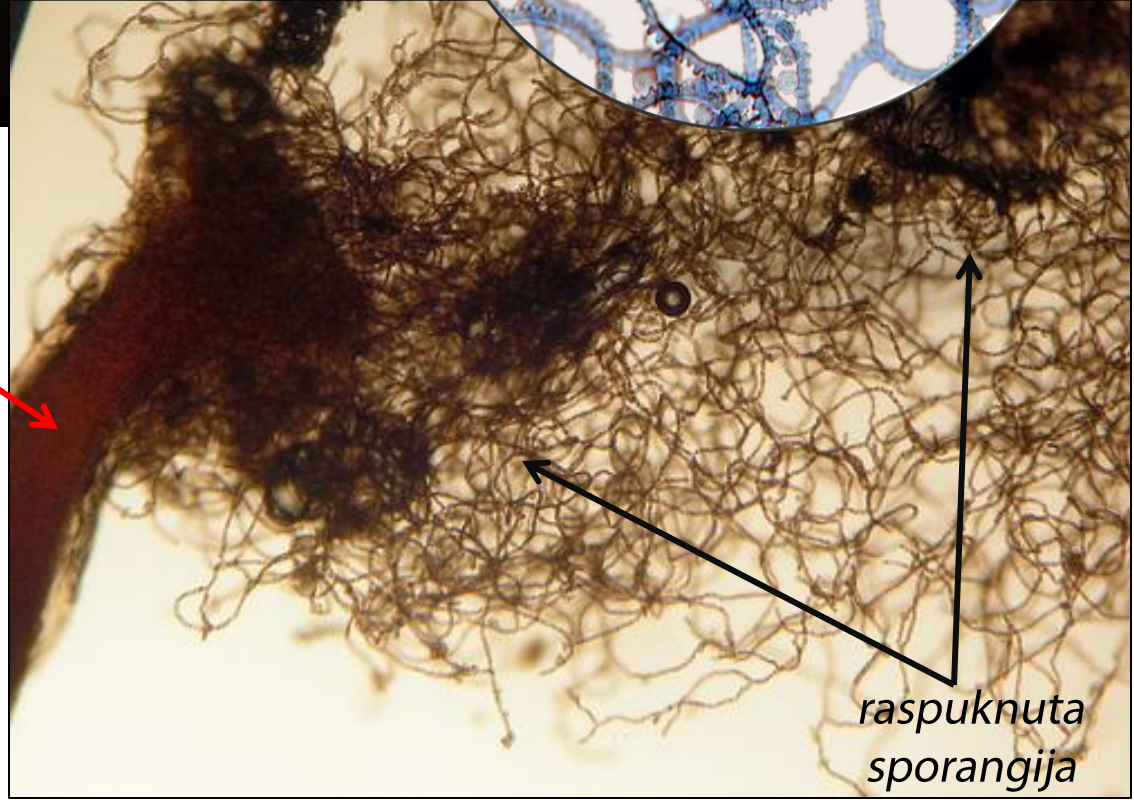
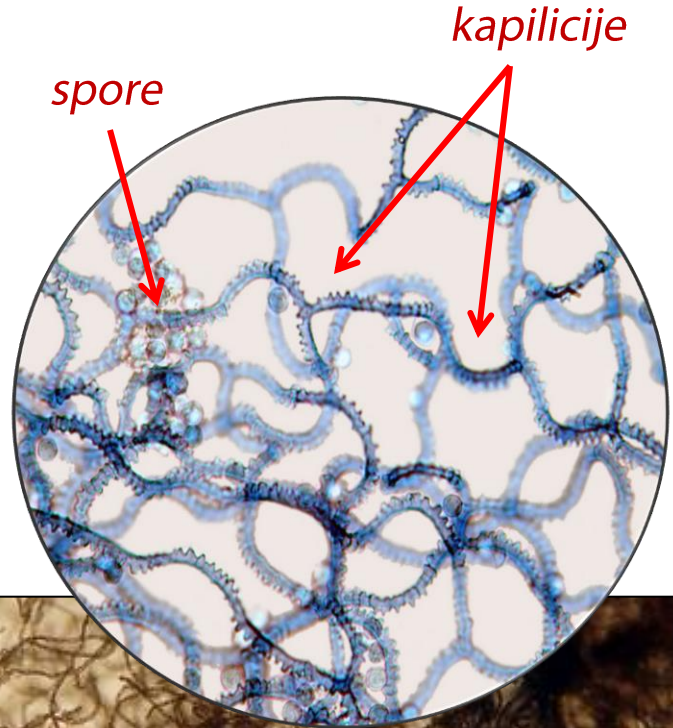


Lycogala epidendrum

spoljašnji izgled etalija

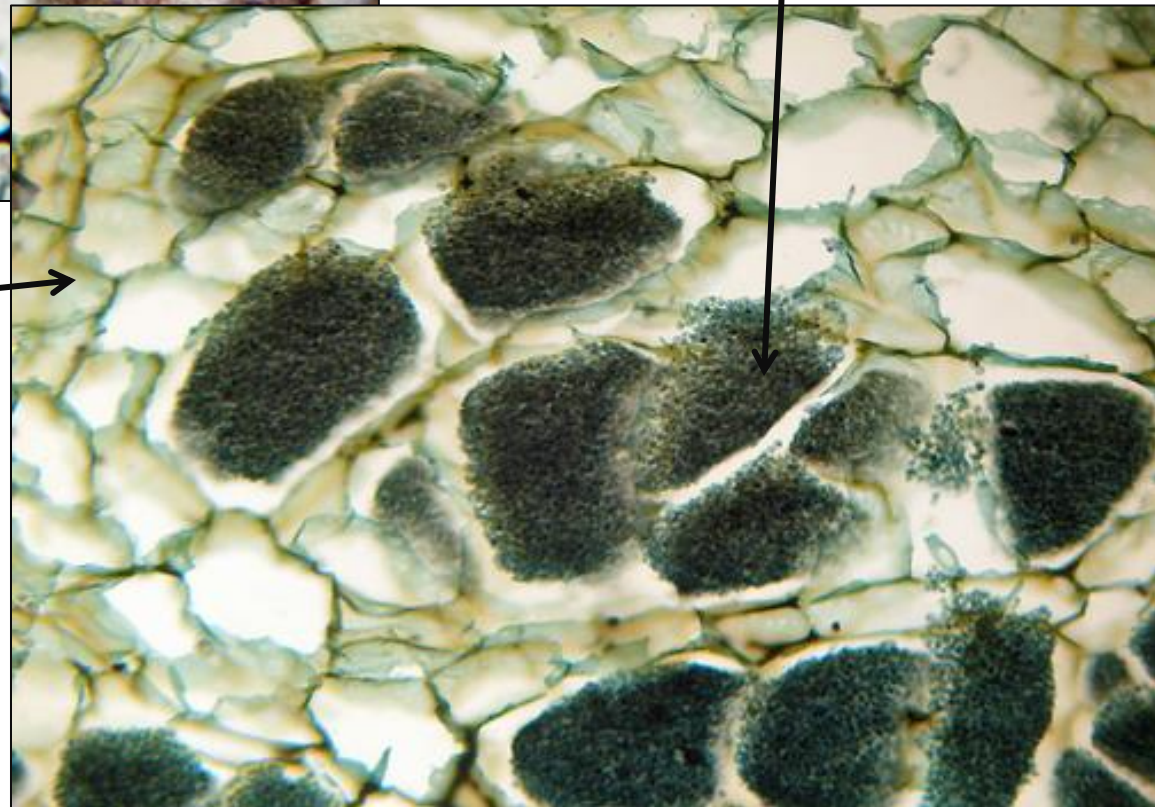
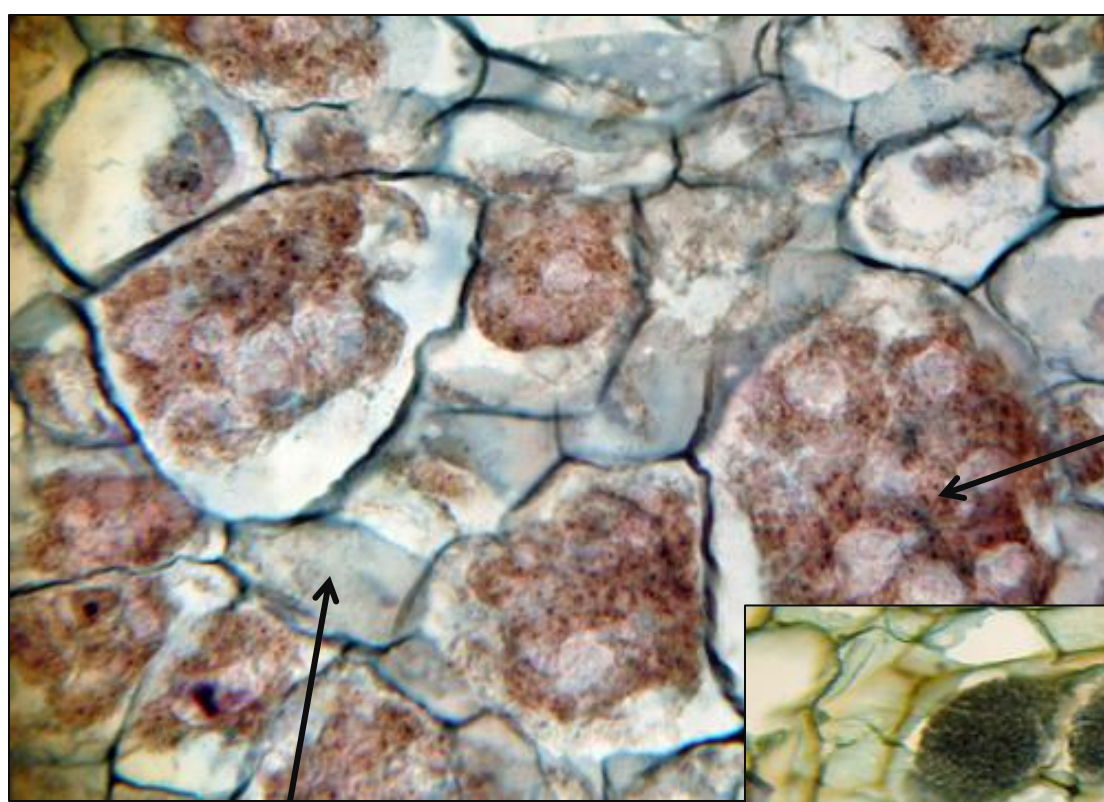


spoljašnji izgled sporangija



Arcyria spp.

*džinovske biljne ćelije sa
sporama i plazmodijumom
parazita*



*zdrave biljne ćelije
normalnih dimenzija*

*Plasmodiophora
brassicae*



septirana micelija



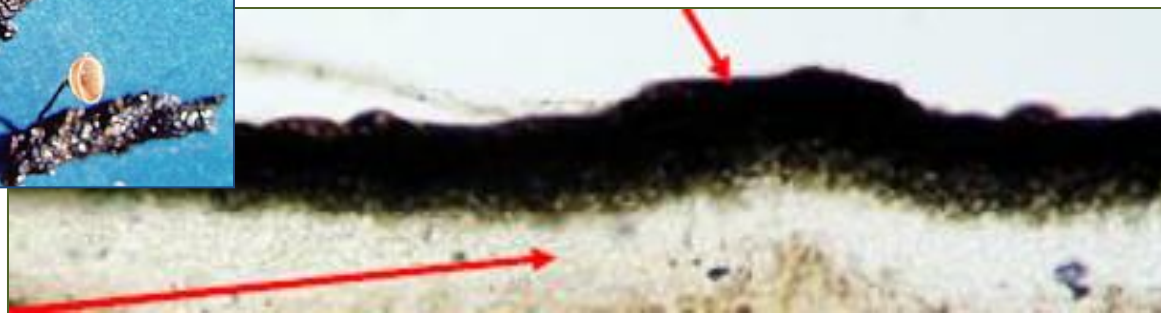
neseptirana (cenocitična) micelija

sklerocija, makroskopski izgled



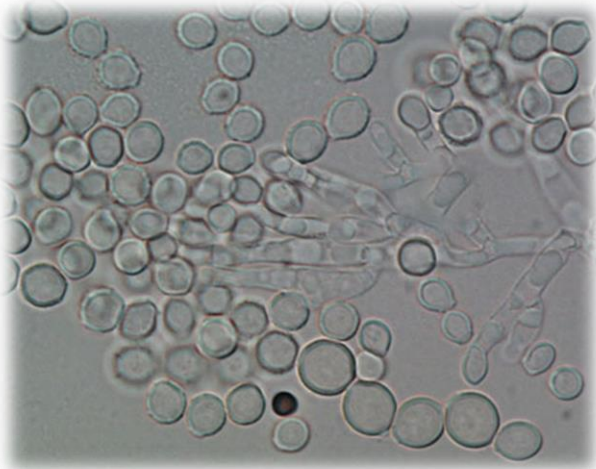
srž od tankozidnih hifa

kora od debelozidnih hifa

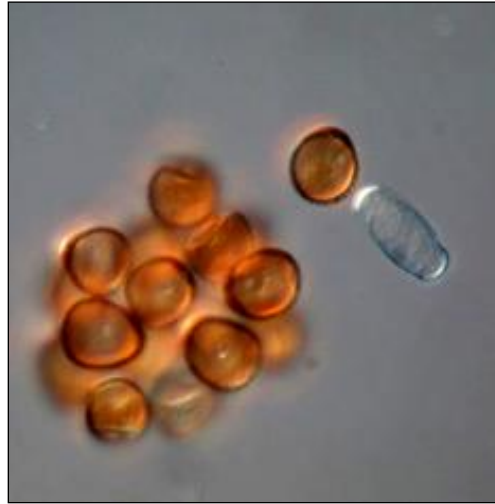


presjek kroz sklerociju

BESPOLNE SPORE



1-ćelijske konidije



uredospore



septirane konidije



1-ćelijske teliospore



višećelijske teliospore



2-ćelijske teliospore