

22 October 2019

Stakeholder Dialogue

Brain Circulation in Europe



Enterprise Europe Network (EEN)

Anna Sibilla - EASME

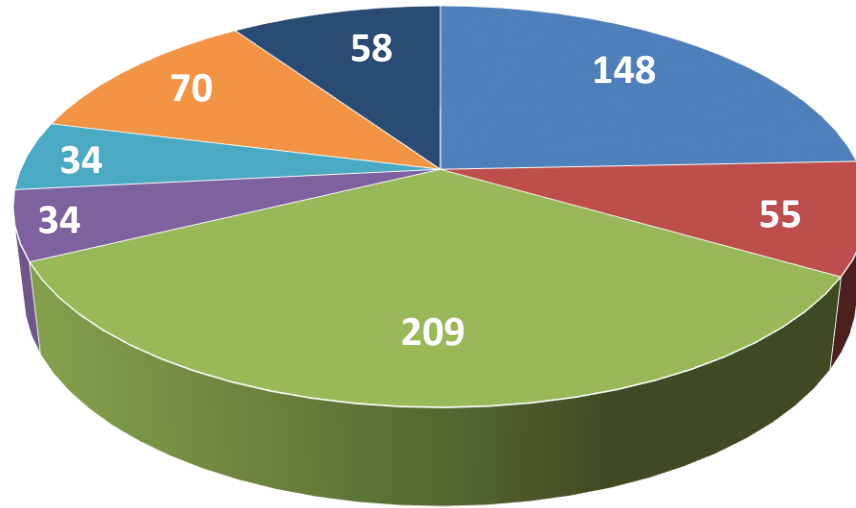
The **Enterprise Europe Network (EEN)** is the world's largest support network for SMEs.

Its mission is helping companies to innovate and grow internationally

The EEN

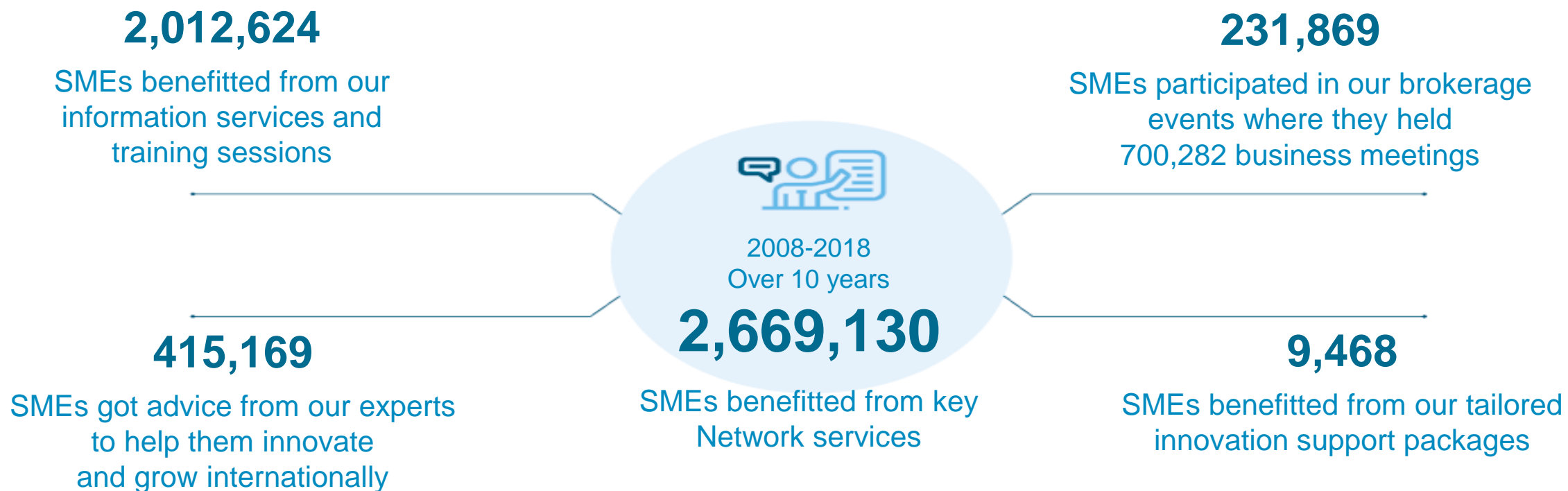
- ✓ helps business to grow faster through new commercial partnerships and provides specialized advisory services.
- ✓ combines international expertise with local knowledge to help take innovation into new markets.
- ✓ is formed by over 600 partner organisations in Europe and beyond and involves thousands of local experts.

PARTNER ORGANISATIONS



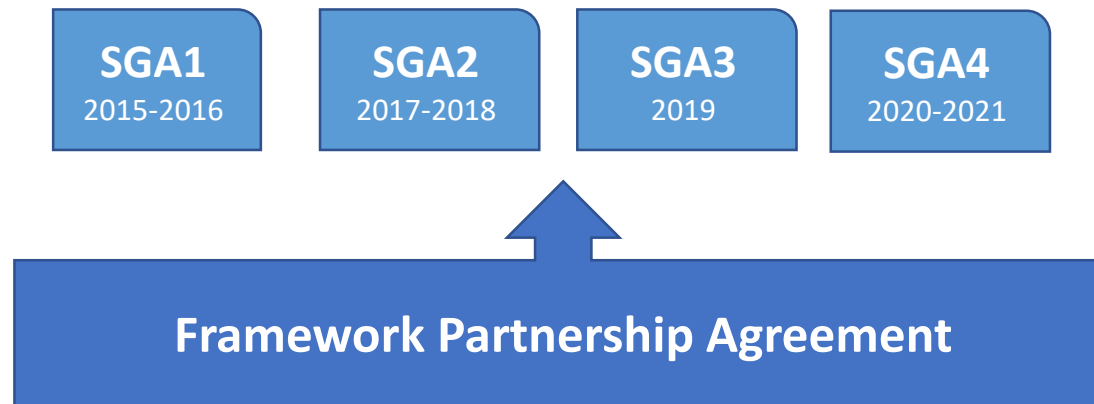
- Chamber of Commerce
- EC / Government Institution
- Other Private Consultancy Company
- Other Public Consultancy Company
- Professional Association
- Regional/National Development Agency
- University/Research Institute

10 years 2008-2018



Contractual Frame

The activities of the Network are **supported by 2 EU programmes: COSME and H2020** through a Framework Partnership Agreement established for the duration of the programming period (2014 – 2021) and a set of Specific Grant Agreements of the duration of 2 years (+ a SGA of 1 year duration).



Cooperations

EEN currently has in place 18 cooperation with **Associated Members** through **MEMORANDA of UNDERSTANDING**, among the more represented:

- ✓ **5 Associations**
- ✓ **4 EU supported IPR Helpdesks** (European; China; Latin America; South East Asia)
- ✓ **3 Networks** (EBN; EUREKA; ANIMA Investment)
- ✓ **2 EU Regulatory Agencies** (European Agency for Safety and Health at Work & European Chemicals Agency)

For more information on the Enterprise Europe Network:

<https://een.ec.europa.eu/>

Anna SIBILLA, EASME sector A1.1.

anna.sibilla@ec.europa.eu

Patrick DE SMEDT, DG GROW unit H.2

Patrick.DE-SMEDT@ec.europa.eu