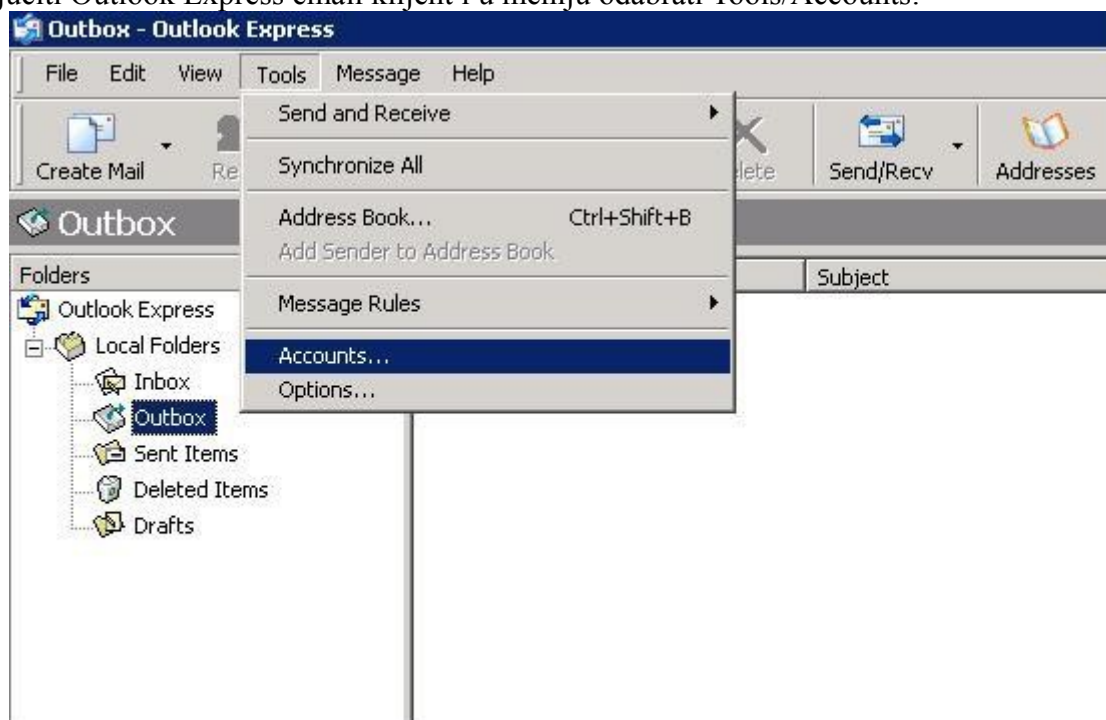
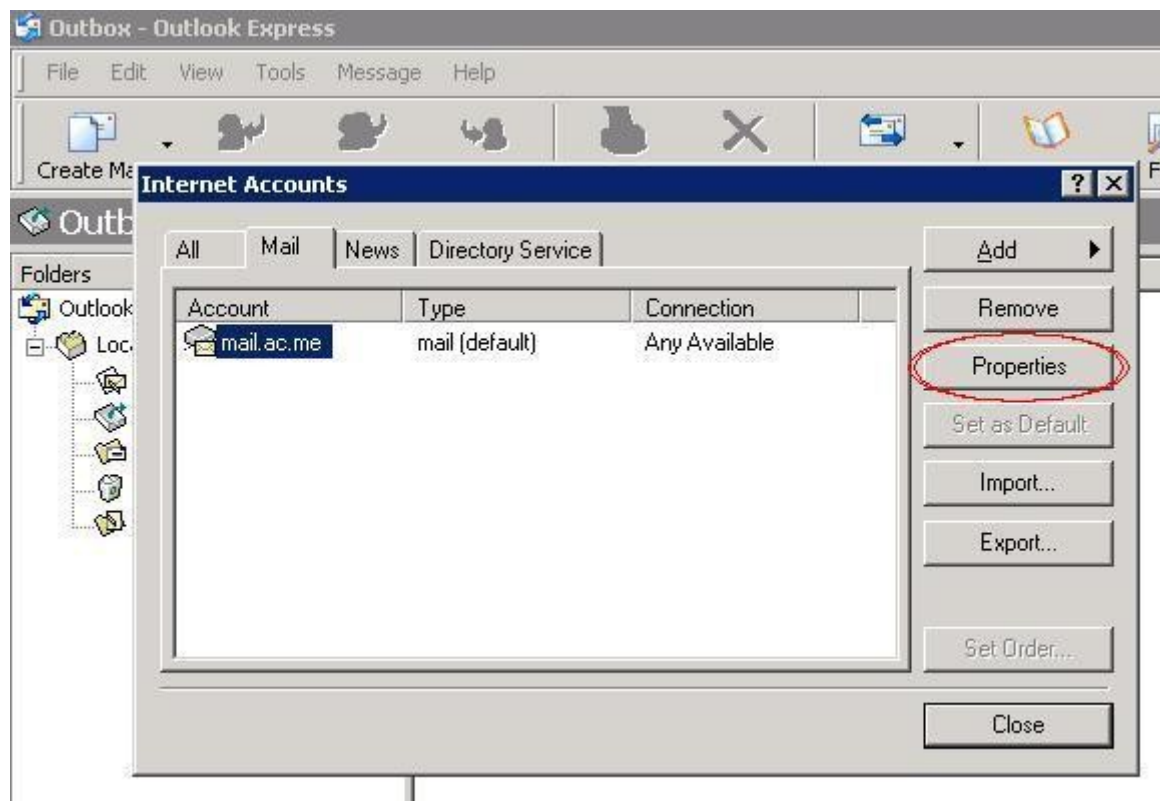


## Uputstvo za uključivanje SMTP autorizacije na Outlook Express-u

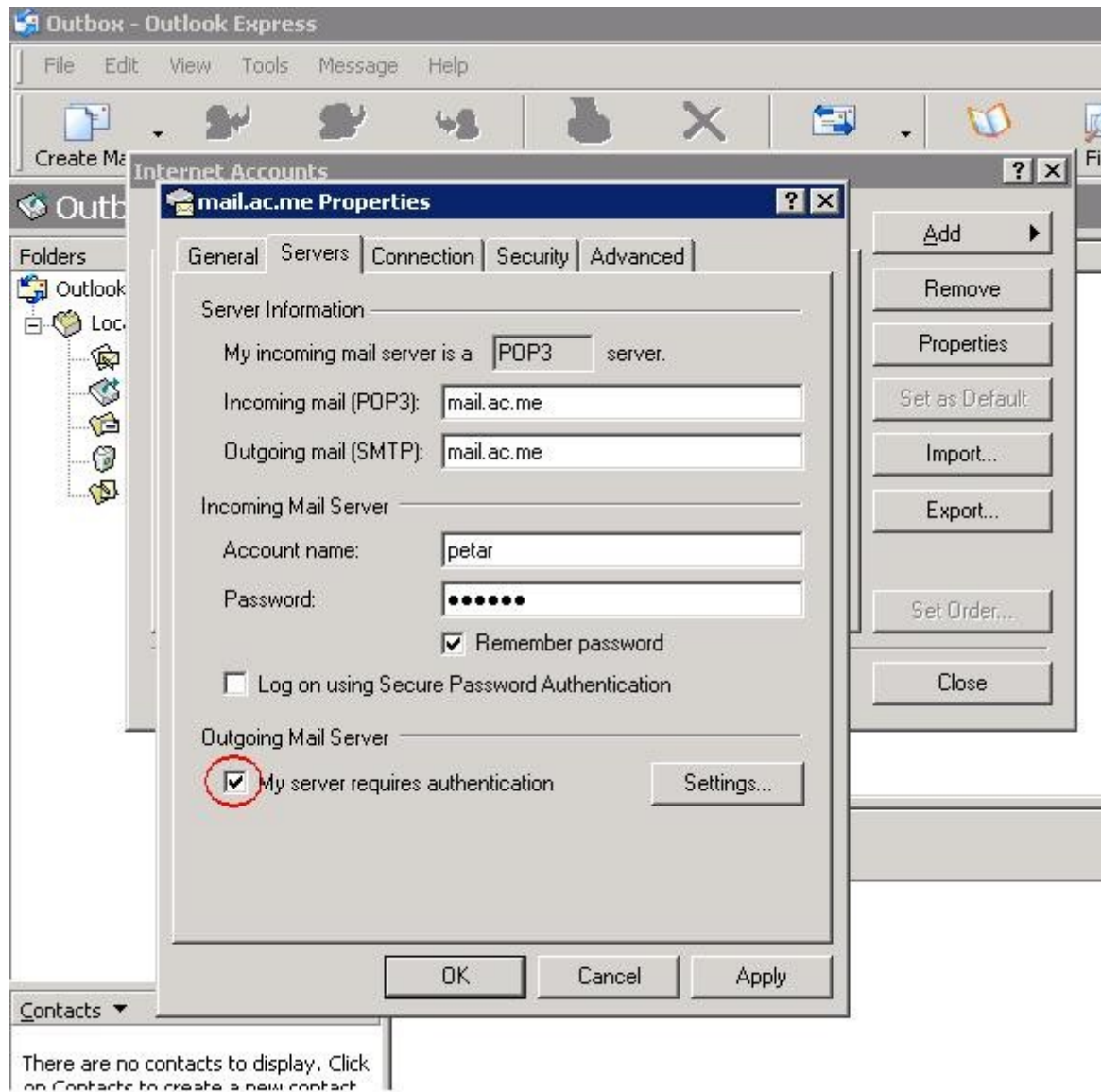
Uključiti Outlook Express email klijent i u meniju odabrati Tools/Accounts:



U prozoru koji se otvori odabrati vaš akademski email nalog i kliknuti na Properties:



U sljedećem prozoru, odaberi karticu Servers i uključiti opciju 'My server requires authentication'



Potvrditi pritiskom na dugme OK.