
IS-LM model

Prof. dr Maja Baćović
17.11.2021.

IS-LM model

- Simultana rovnováha na robnom i novčanom tržištu
- Realna sfera – IS kriva
- Monetarna sfera – LM kriva

IS-LM model

- Endogene varijable
 - Dohodak
 - Kamatne stope
- Egzogene varijable
 - Budžetska potrošnja
 - Ponuda novca

IS kriva (zatvorena ekonomija)

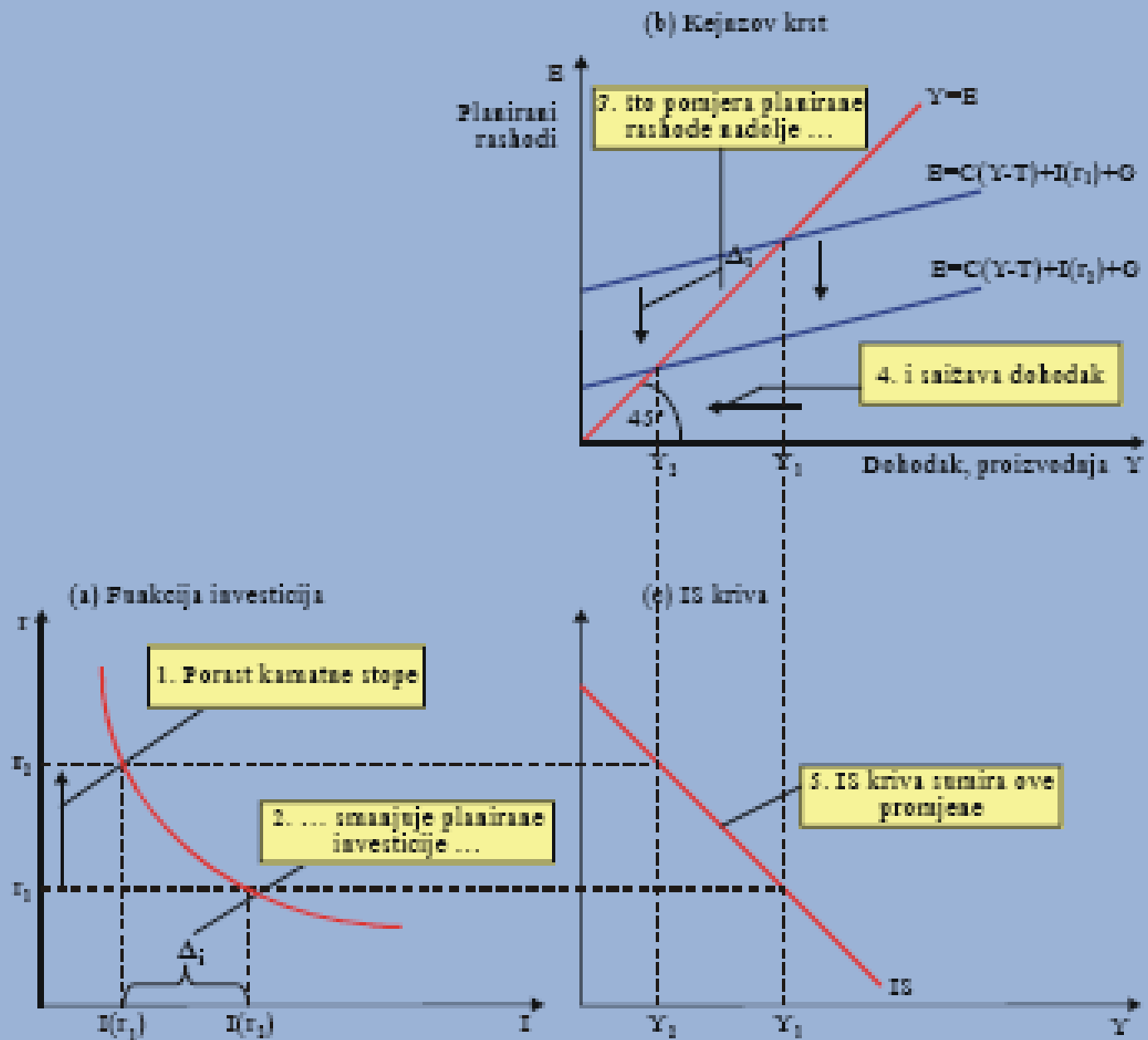
- Ravnoteža na robnom tržištu
- IS – Investment & Saving

$$Y=C+I+G$$

$$C=f(Y)$$

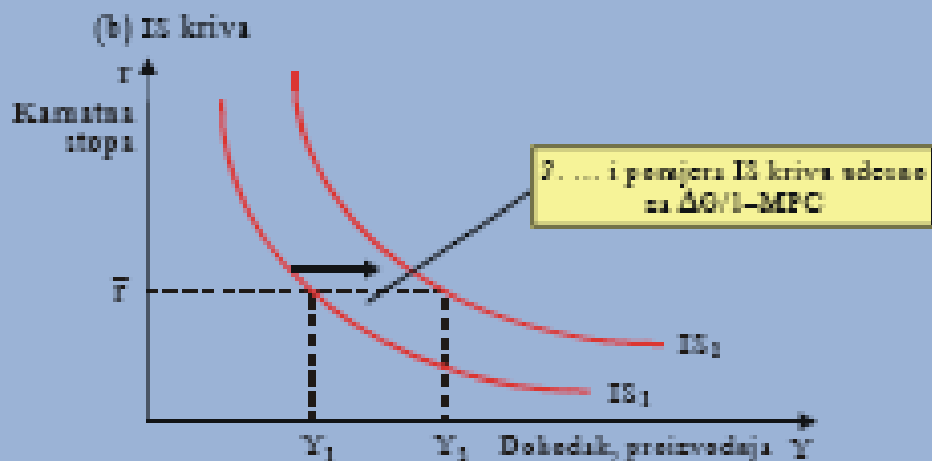
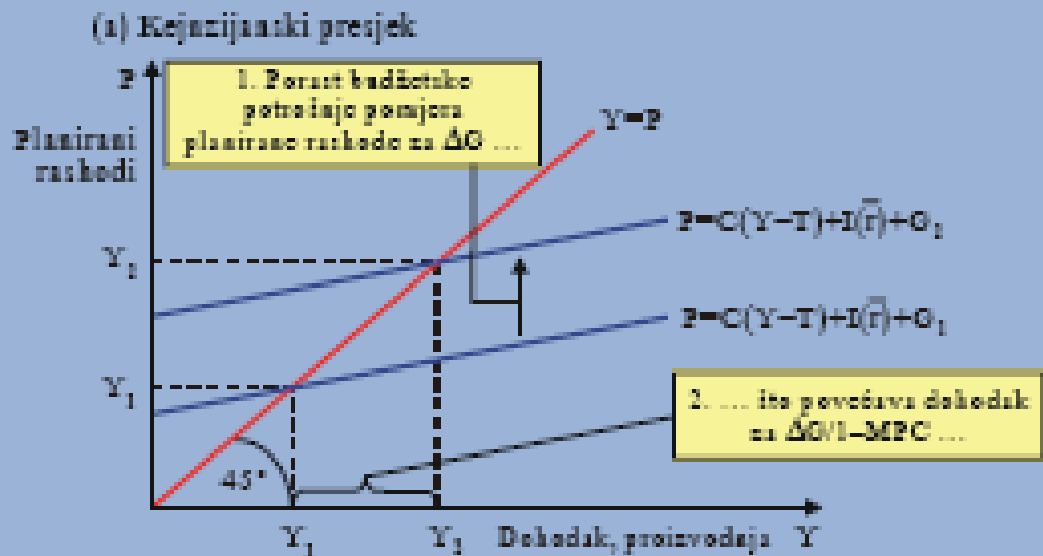
$$I=f(r)$$

$$G=f(T)$$



Grafik 11.2: Izvođenje IS krive

Kako fiskalna politika pomjera IS krivu?

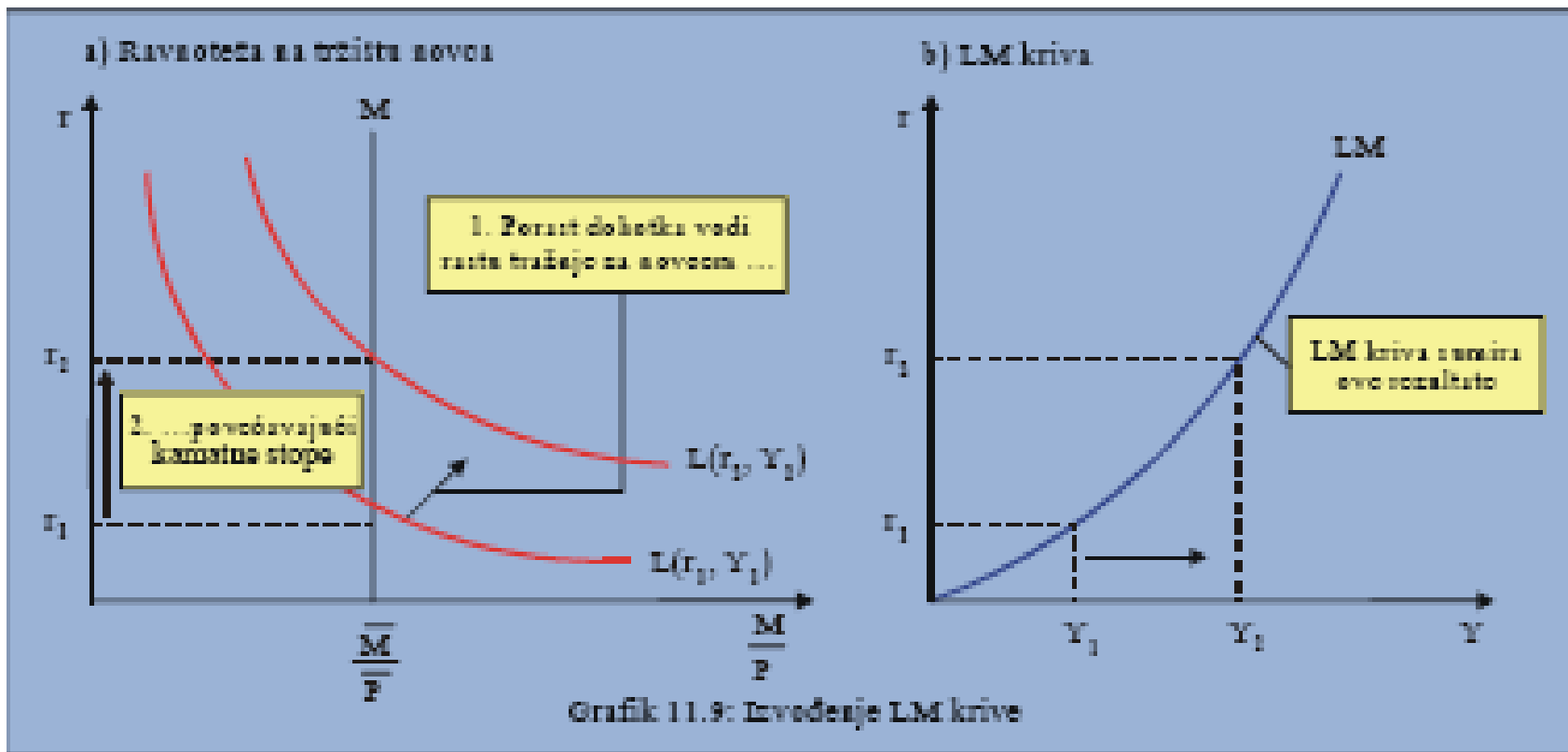


Grafik 11.9: Uticaj fiskalne politike na pomjeranje IS krive

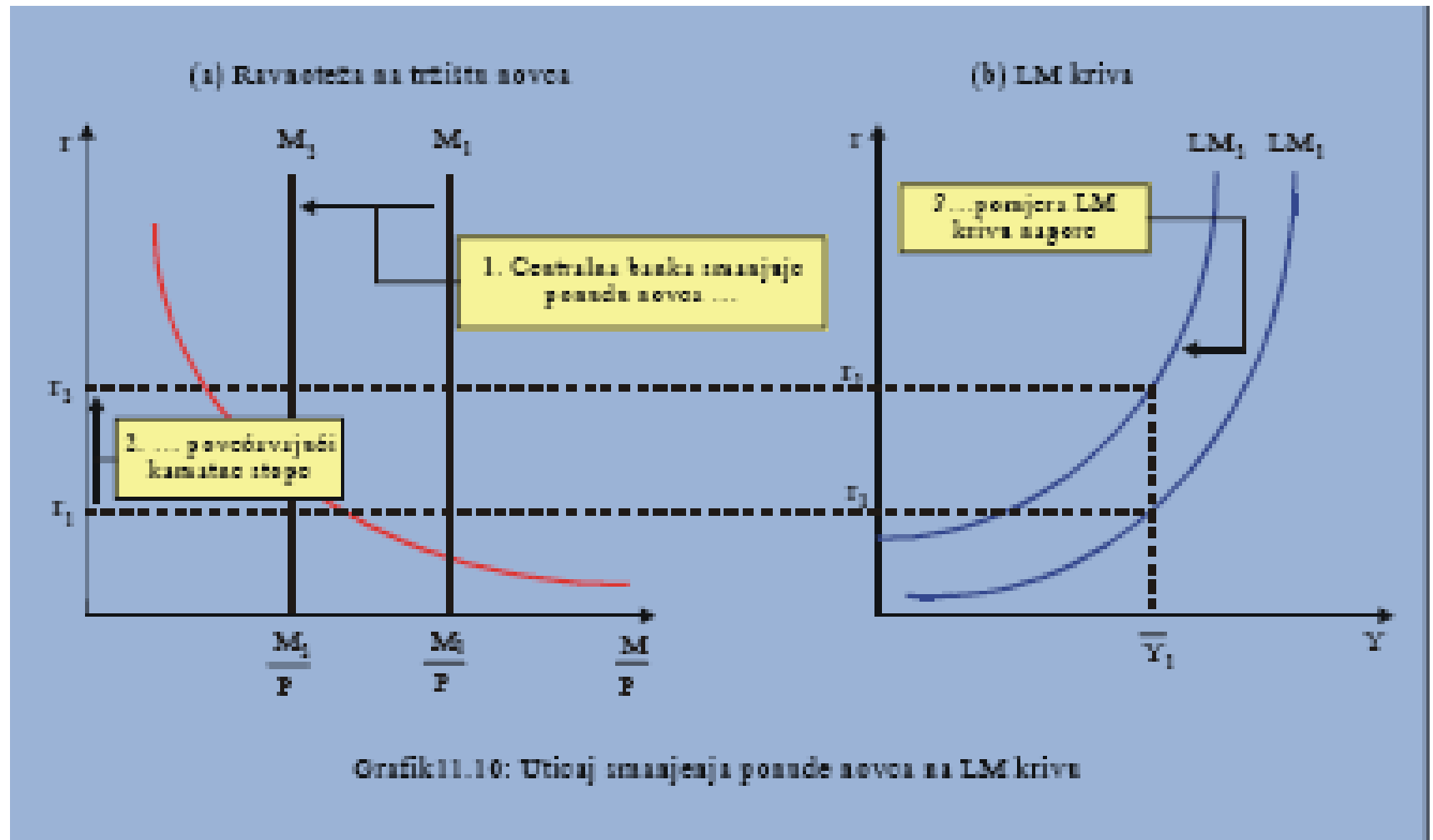
LM kriva (zatvorena ekonomija)

- Ravnoteža na novčanom tržištu
- LM – Liquidity & Money

$$M/P = L(r, Y)$$



Kako promjena ponude novca pomjera LM krivu?

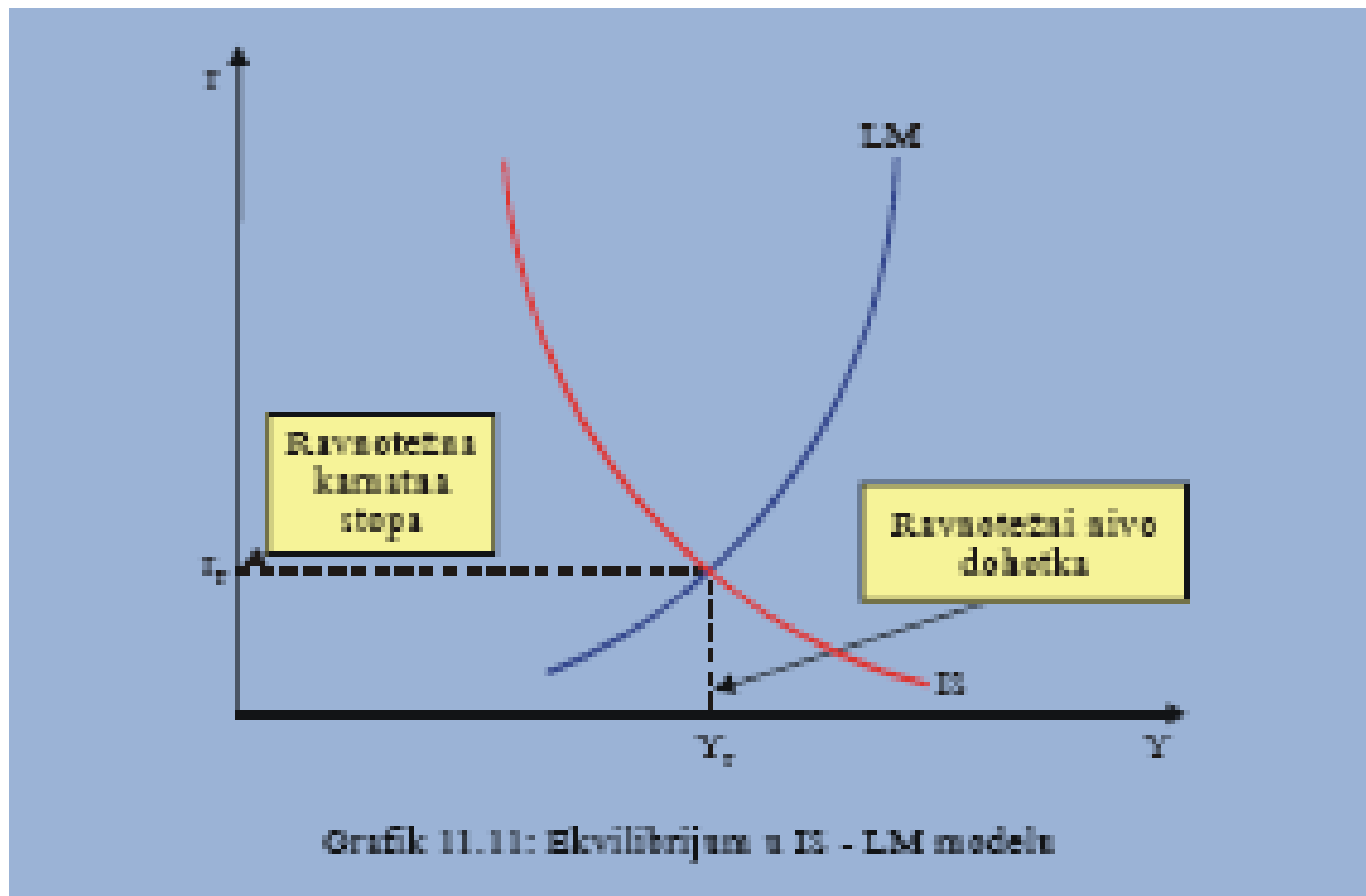


IS-LM

$$Y = C(Y-T) + I(r) + G \dots\dots\dots IS$$

$$M/P = L(r, Y) \dots\dots\dots LM$$

IS-LM-fiskalna i monetarna politika



IS-LM-fiskalna i monetarna politika - model