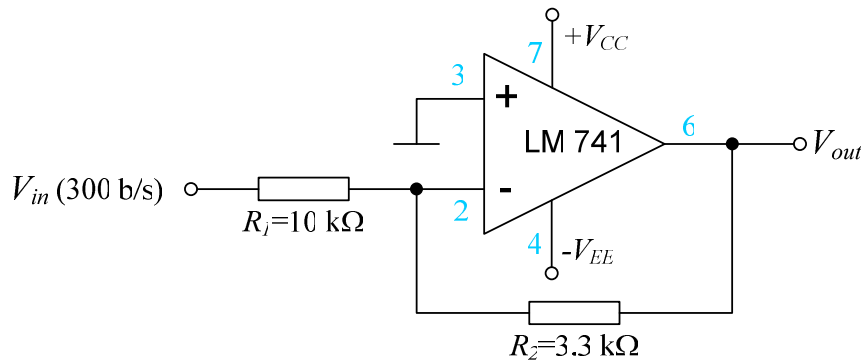


## Prva laboratorijska vježba

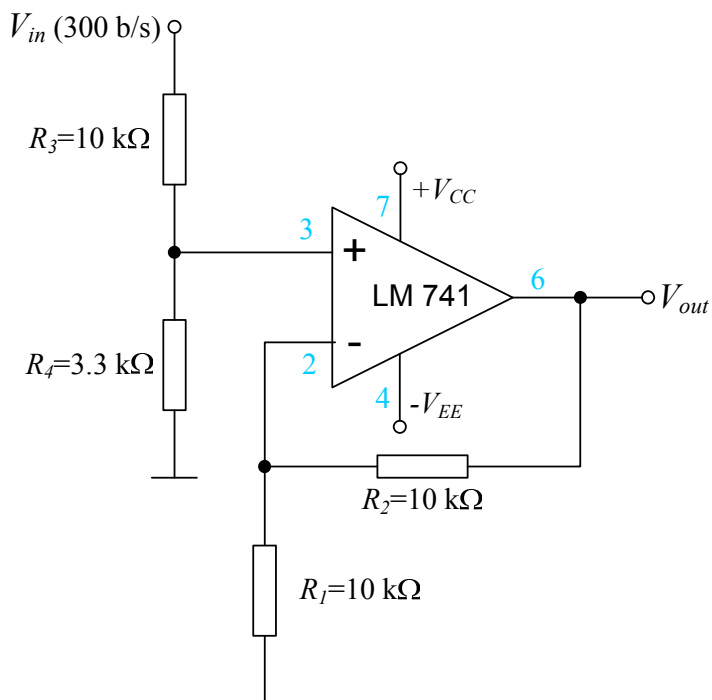
Prikazati talasni oblik signala na izlazu kola.

### 1.1. Invertujući pojačavač



$$V_{out} = -\frac{R_2}{R_1} V_{in}$$

### 2.1. Neinvertujući pojačavač

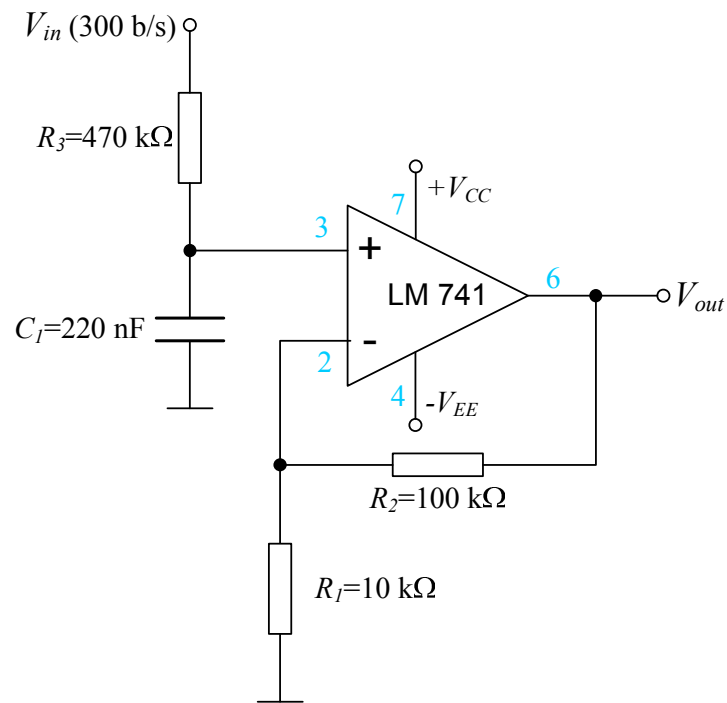


$$V_{out} = \frac{R_4}{R_3 + R_4} \left( 1 + \frac{R_2}{R_1} \right) V_{in}$$

$+V_{CC}$  - žuto-bijela;  $-V_{EE}$  - plavo-bijela; gnd - sivo-plava;  $V_{in}$  - braon-bijela

## Prva laboratorijska vježba

### 2.2. Neinvertujući pojačavač



$$V_{out} = \left(1 + \frac{R_2}{R_I}\right) V^+$$

$+V_{CC}$  - žuto-bijela;  $-V_{EE}$  - plavo-bijela; gnd - sivo-plava;  $V_{in}$  - braon-bijela