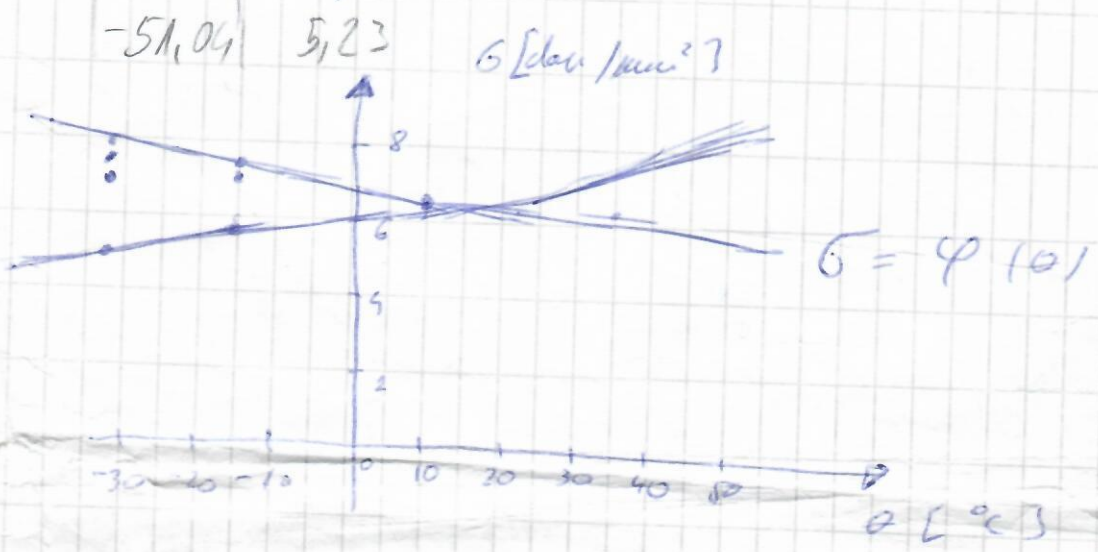


$\sigma < \sigma_{max}$

σ [dan/mm ²]	θ [°]	f [mm]
6	70	7,5
6,5	36	6,8
7	8	6,3
7,5	-15	5,9
8	-39	5,5
8,5	-51,04	5,23

$$f = \frac{a^2 p}{8b} = \frac{200^2 \cdot 8,9 \cdot 10^{-3}}{8 \cdot 6}$$

itd



$$f = \frac{a^2 p}{8b_n}$$

- distorsi horizontal