

3

ZATEZNO  
POLJE MAX 8 km za 110 kV od

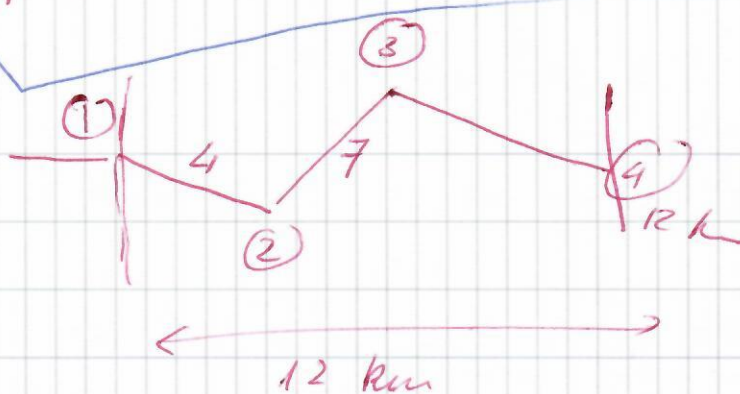
a) broj raspona

b) ZATEZNI POLJE

c) ZATEZNIH STUBOVA

d) NOSECILIH STUBOVA

e) broj stubova



$$a) N_{\text{raspona}} = \frac{L_1}{\Delta_{\text{pr}}} = \frac{4000}{300} = 13,3 = 14$$

$$N_{\text{raspona}} = \frac{L_2}{\Delta_{\text{pr}}} = \frac{3000}{300} = 10$$

$$N_{\text{raspona}} = \frac{L_3}{\Delta_{\text{pr}}} = \frac{5000}{300} = 16,66 = 17$$

$N_R$   
=

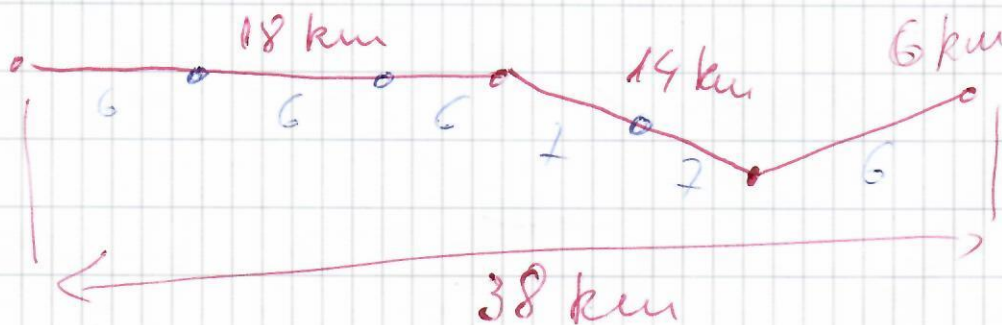
41

b)  $N_{\text{zateznih polja}} = 3$

c)  $N_{\text{zateznih stubova}} = 4$

d)  $N_{\text{nosecilih stubova}} = N_{\text{raspona}} - 1, N_{\text{nr}} = 13 + 9 + 16 = 38$   
 e)  $N_{\text{raspona}} - 1$   
 $N_{\text{raspona}} - 1$

4) Glavni broj zateznih polja za 110 kV od



Ima 6 zateznih polja

3-5a max 8 km - zatezno polje