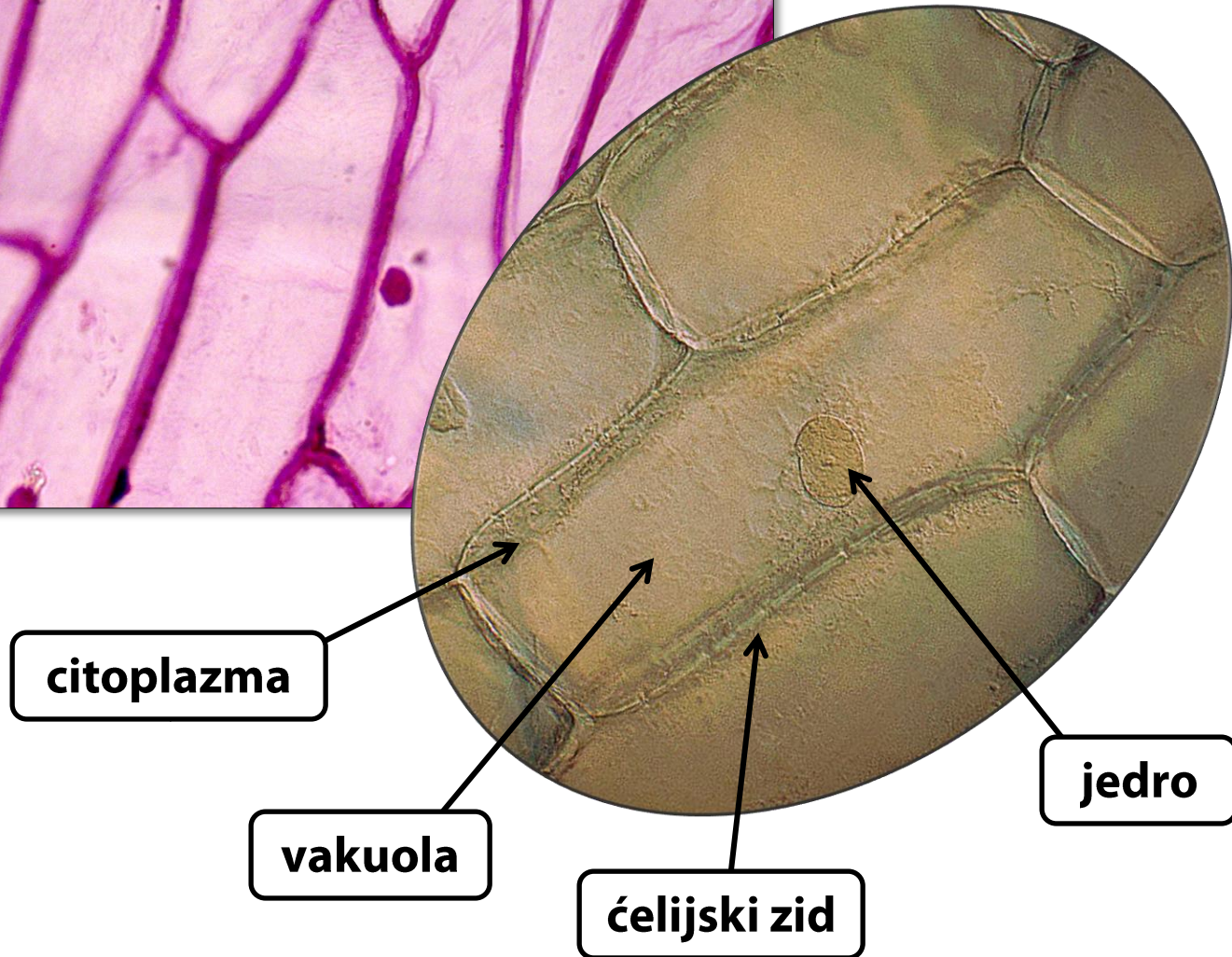




Ćelije pokožice crnog luka (*Allium cepa*)



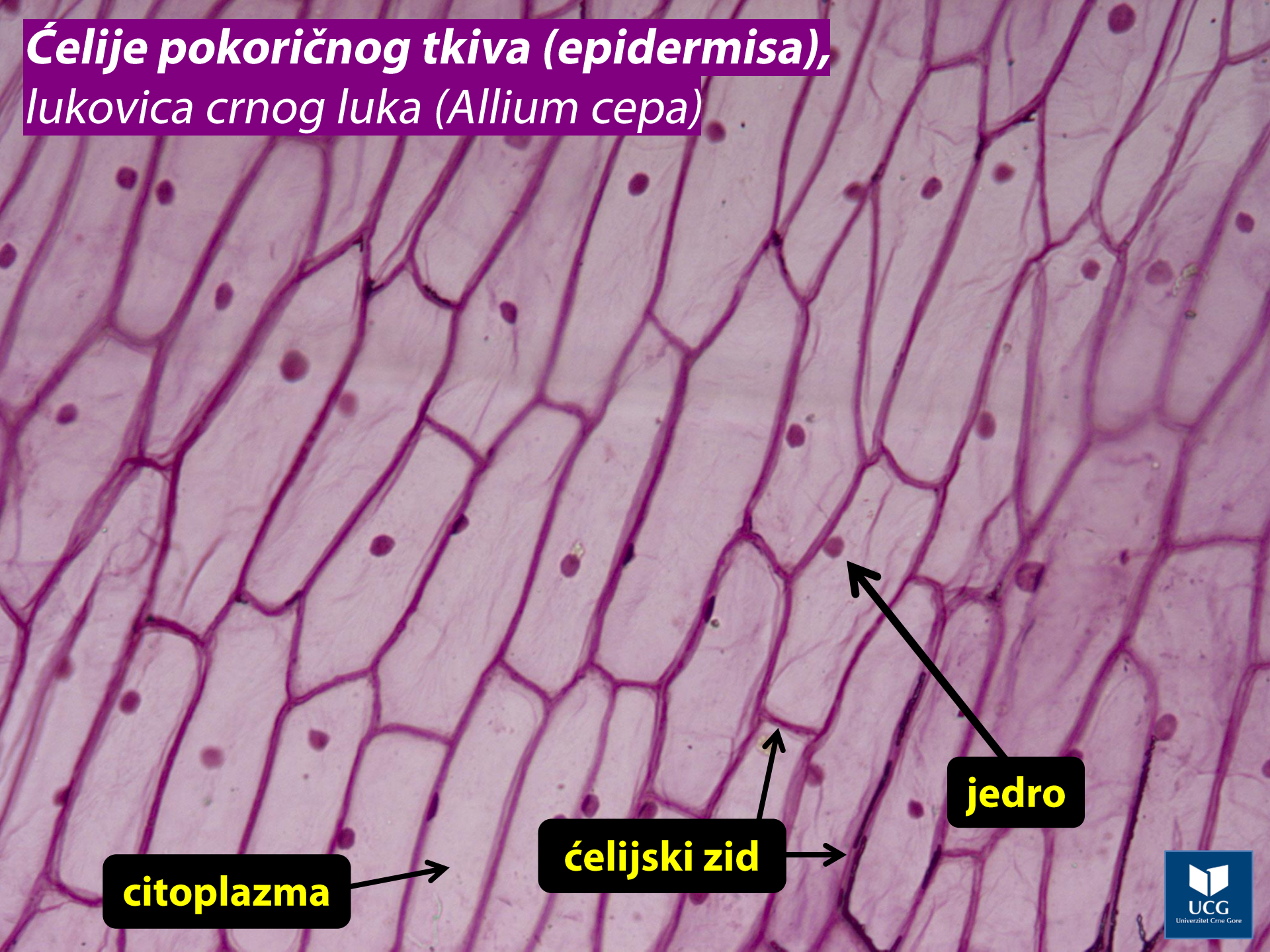
citoplazma

vakuola

ćelijski zid

jedro

**Ćelije pokoričnog tkiva (epidermisa),
lukovica crnog luka (Allium cepa)**



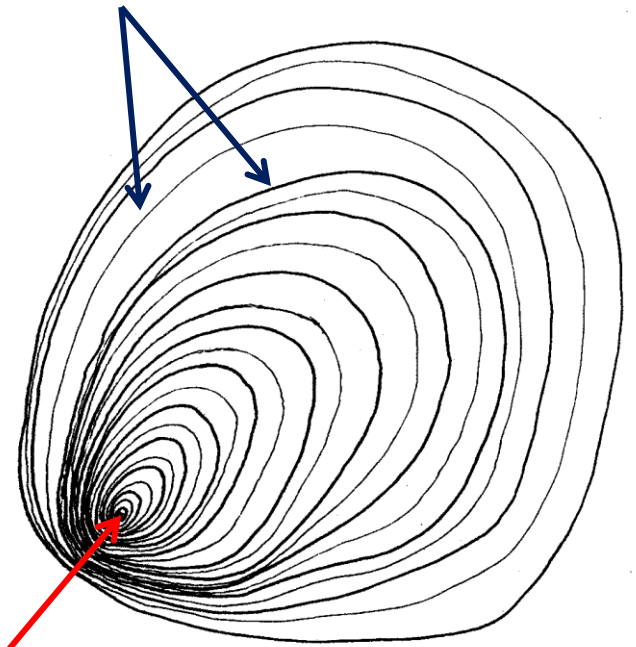
citoplazma

ćelijski zid

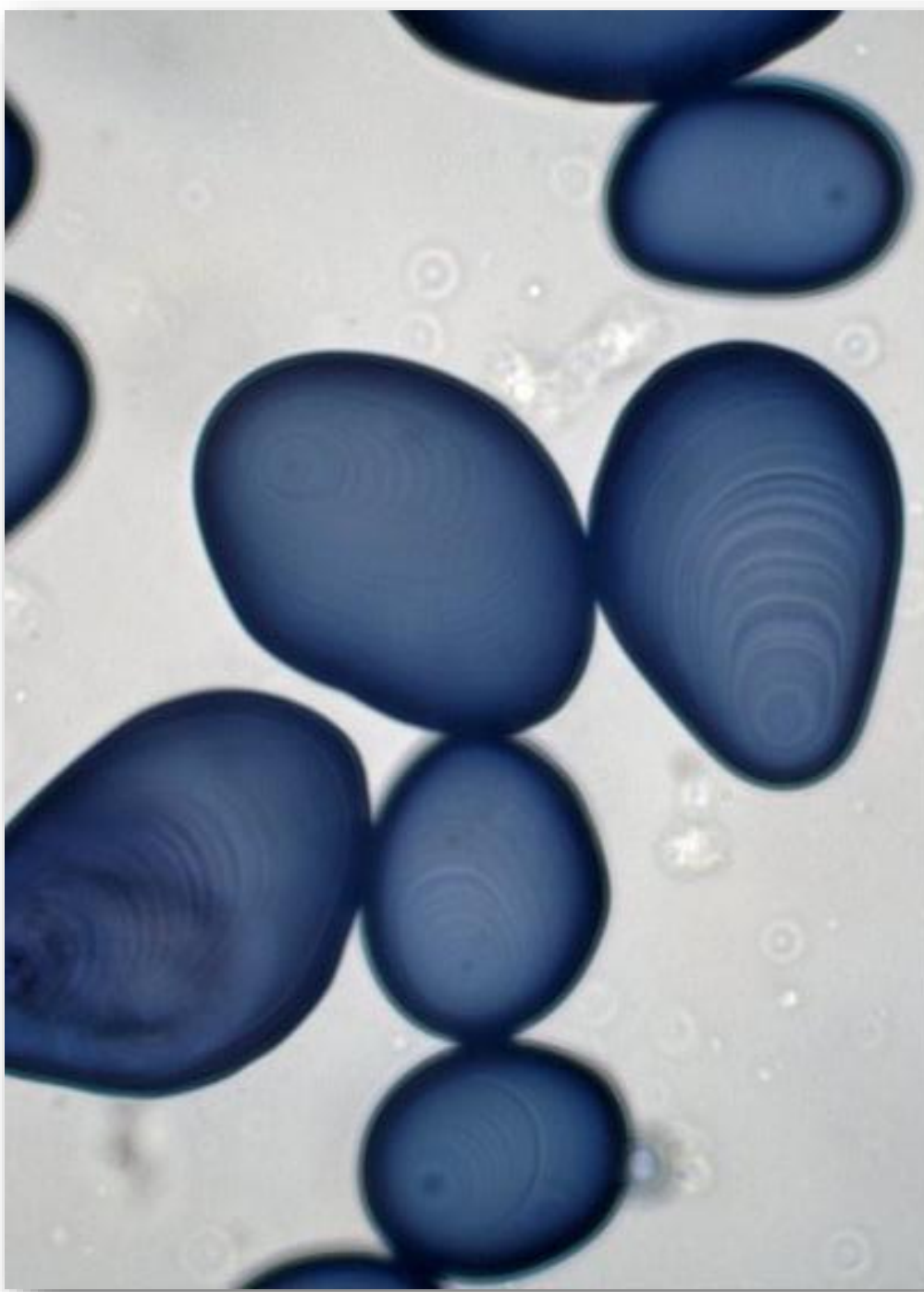
jedro

**Produkti protoplasta:
skrobna zrna u
krtoli krompira
(*Solanum tuberosum*)**

**ekscentrični
slojevi**



**jezgro
(centar)
formiranja**



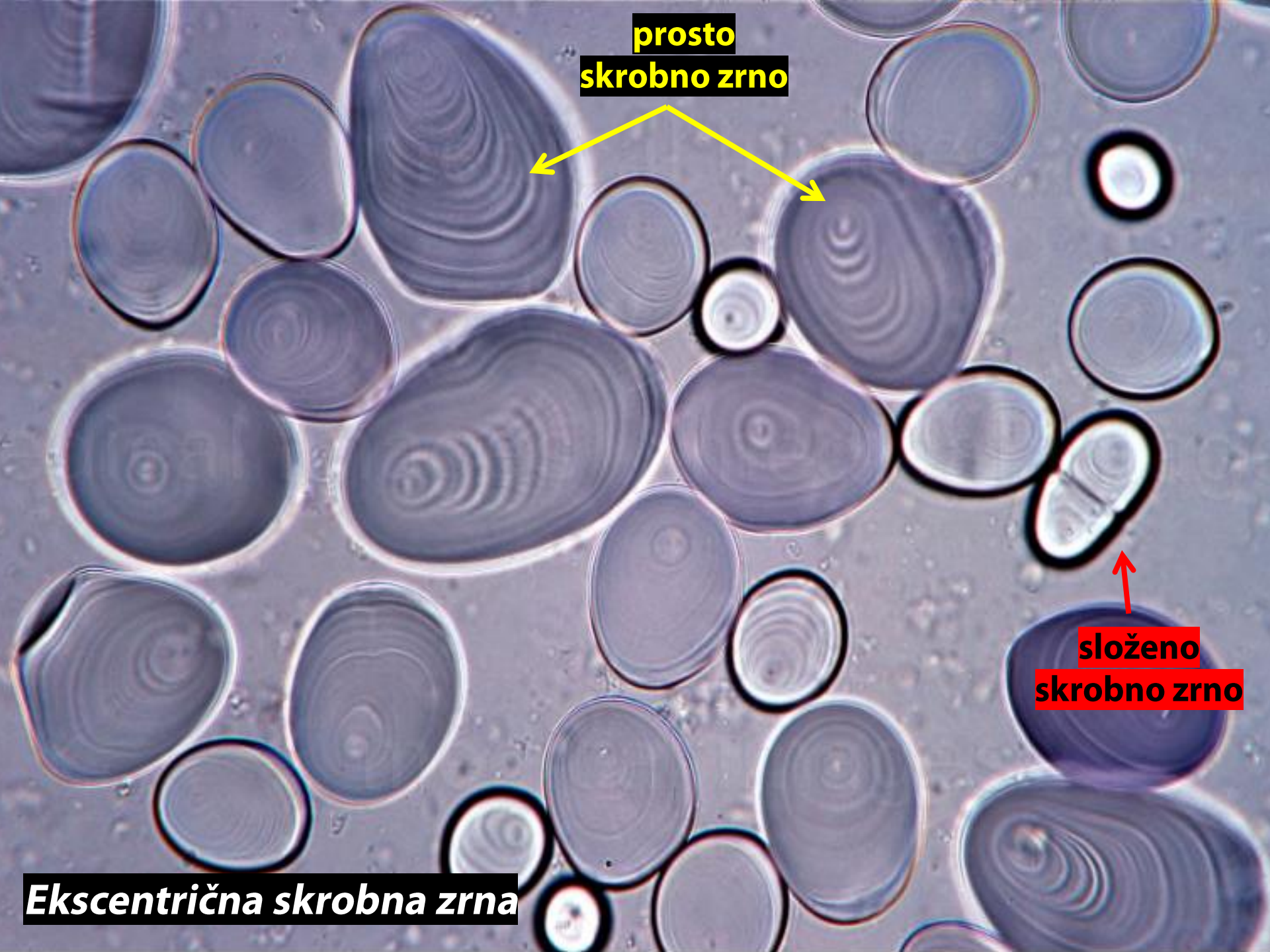
**prosto
skrobno zrno**



**složeno
skrobno zrno**



Ekscentrična skrobna zrna



**prosto
skrobno
zrno**



**složeno
skrobno
zrno**



**polusloženo
skrobno
zrno**



**Tipovi skrobnih zrna
u krtoli krompira**