

1V: Biljna ćelija

PREPARATI:

- 1) Djelovi biljne ćelije (ćelije epidermisa lukovice crnog luka, *Allium cepa*)
- 2) Skrobna zrna kao produkti protoplasta (krtola krompira, *Solanum tuberosum*)

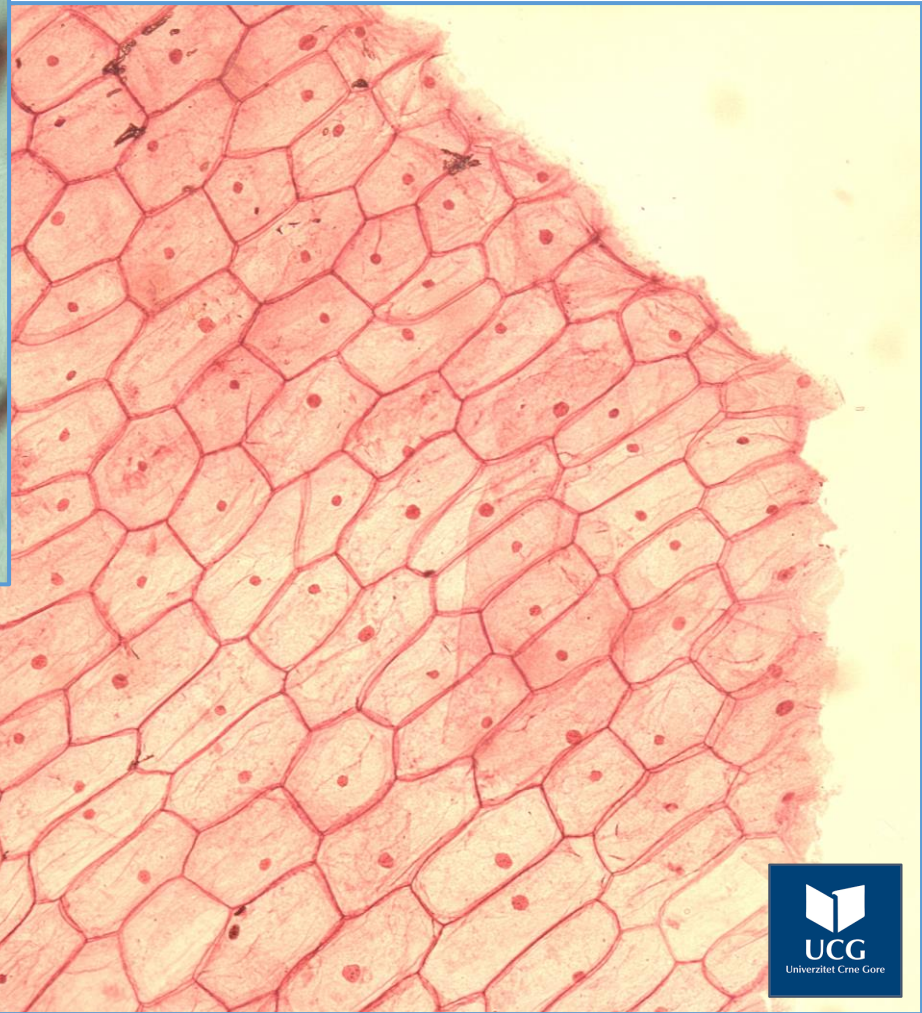
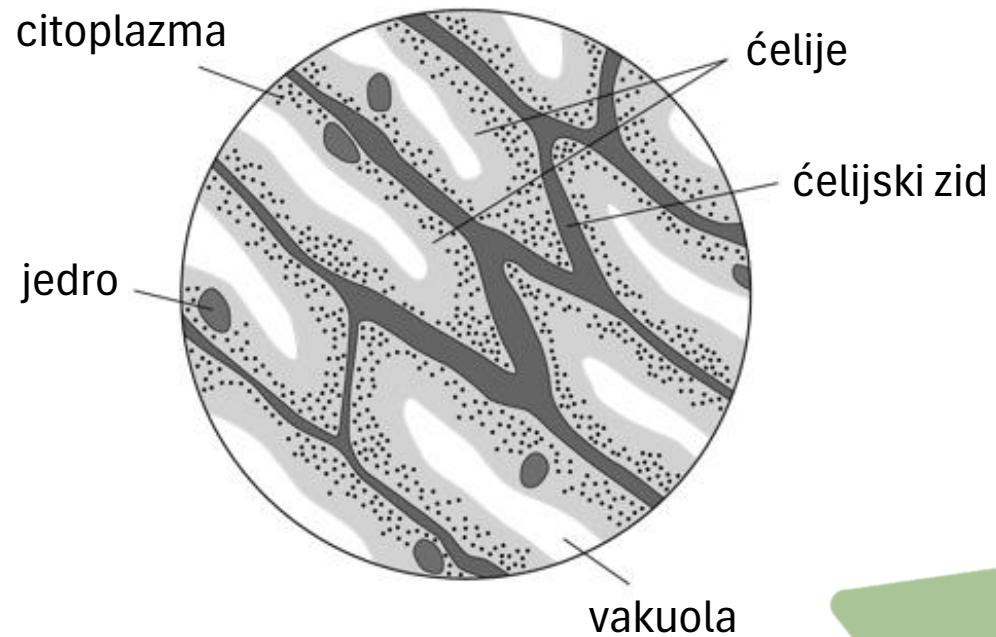
Mijat Božović

BOTANIKA

materijal za laboratorijske vježbe

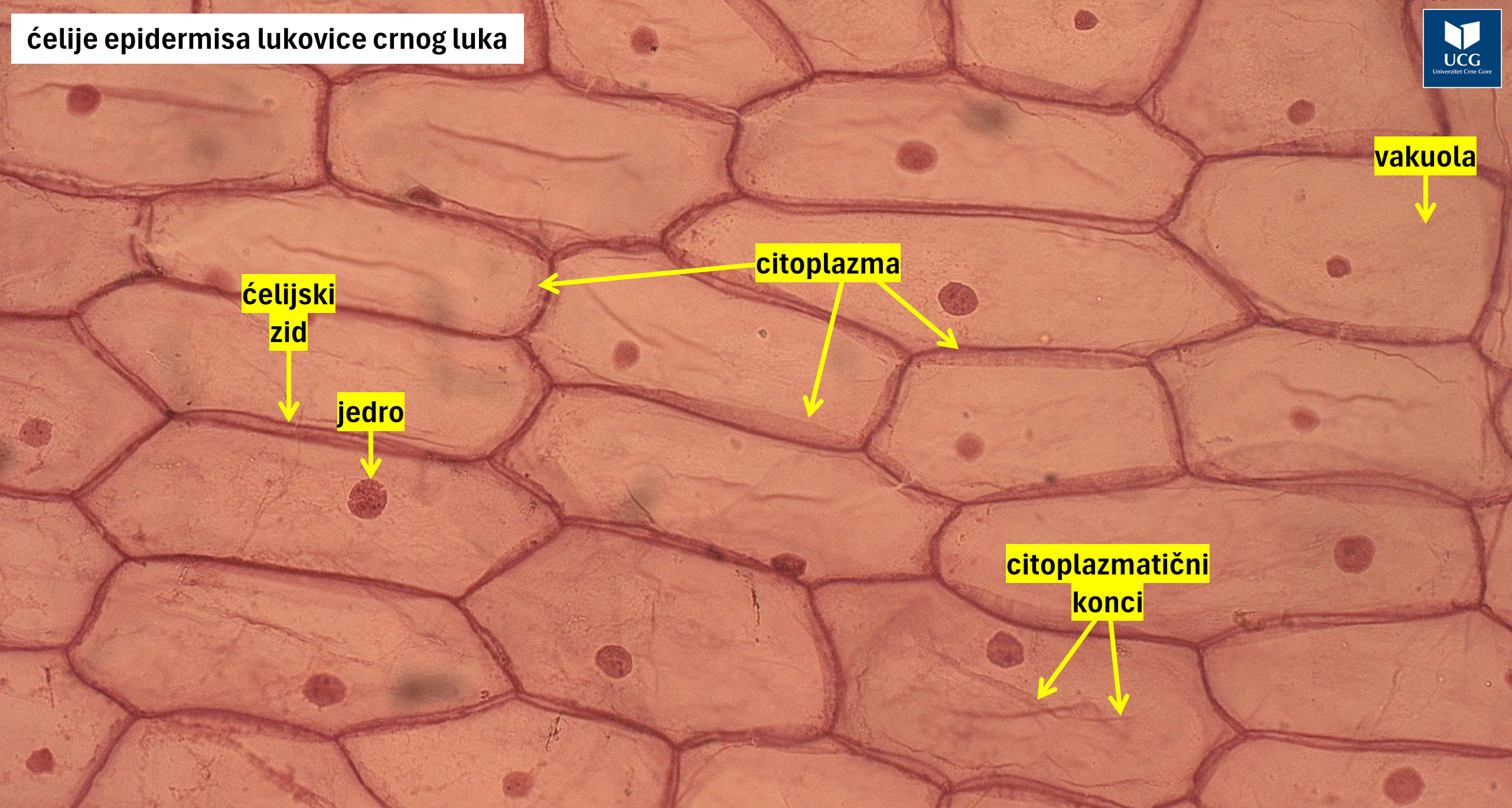


1) Djelovi biljne ćelije



crni luk
(*Allium cepa*)

ćelije epidermisa lukovice crnog luka



ćelijski
zid

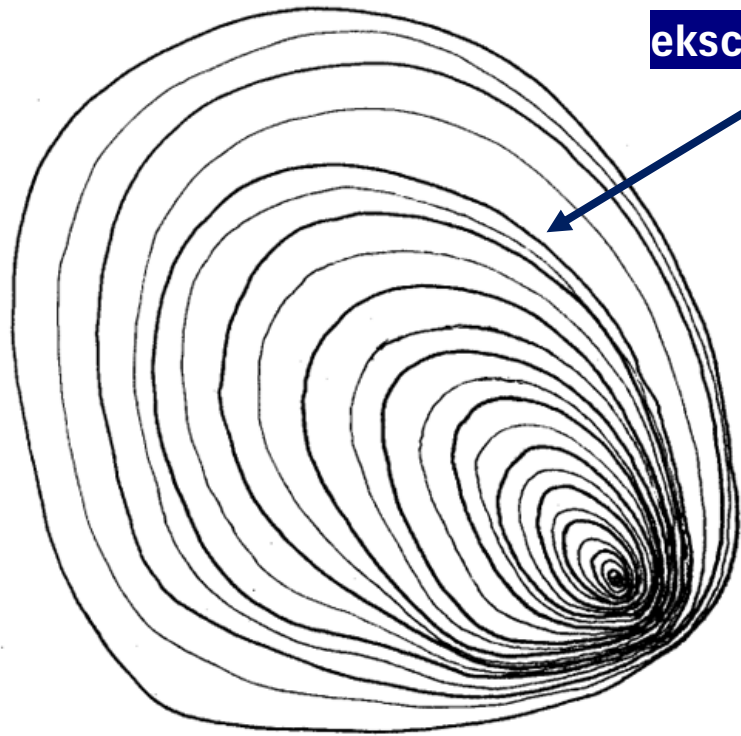
jedro

citoplazma

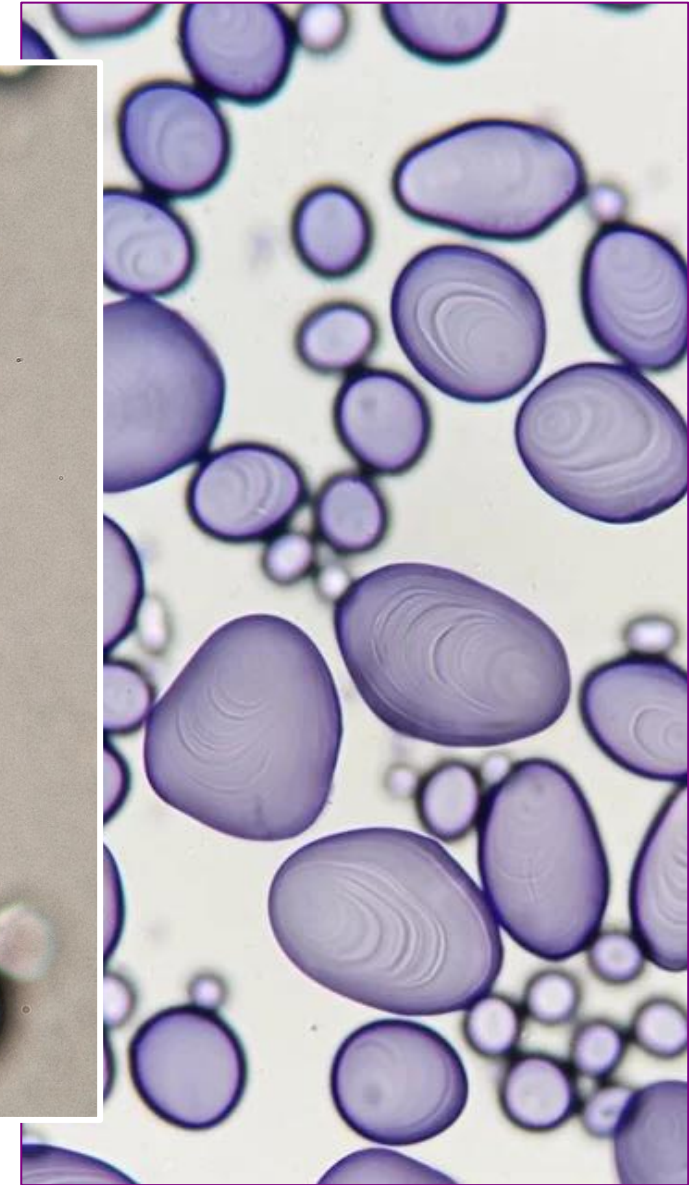
vakuola

citoplazmatični
konci

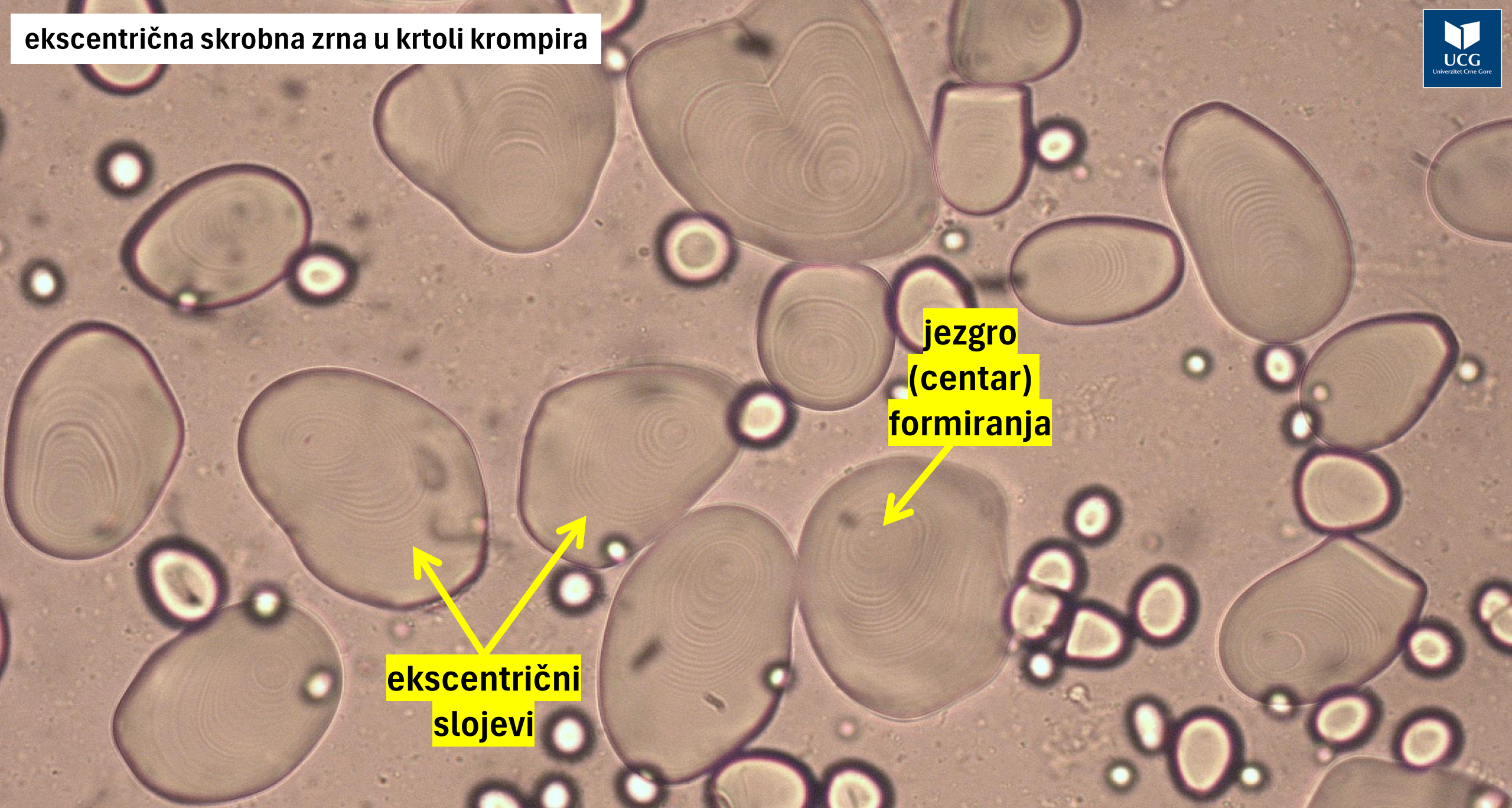
2) Skrobna zrna kao produkti protoplasta



ekscentrični slojevi



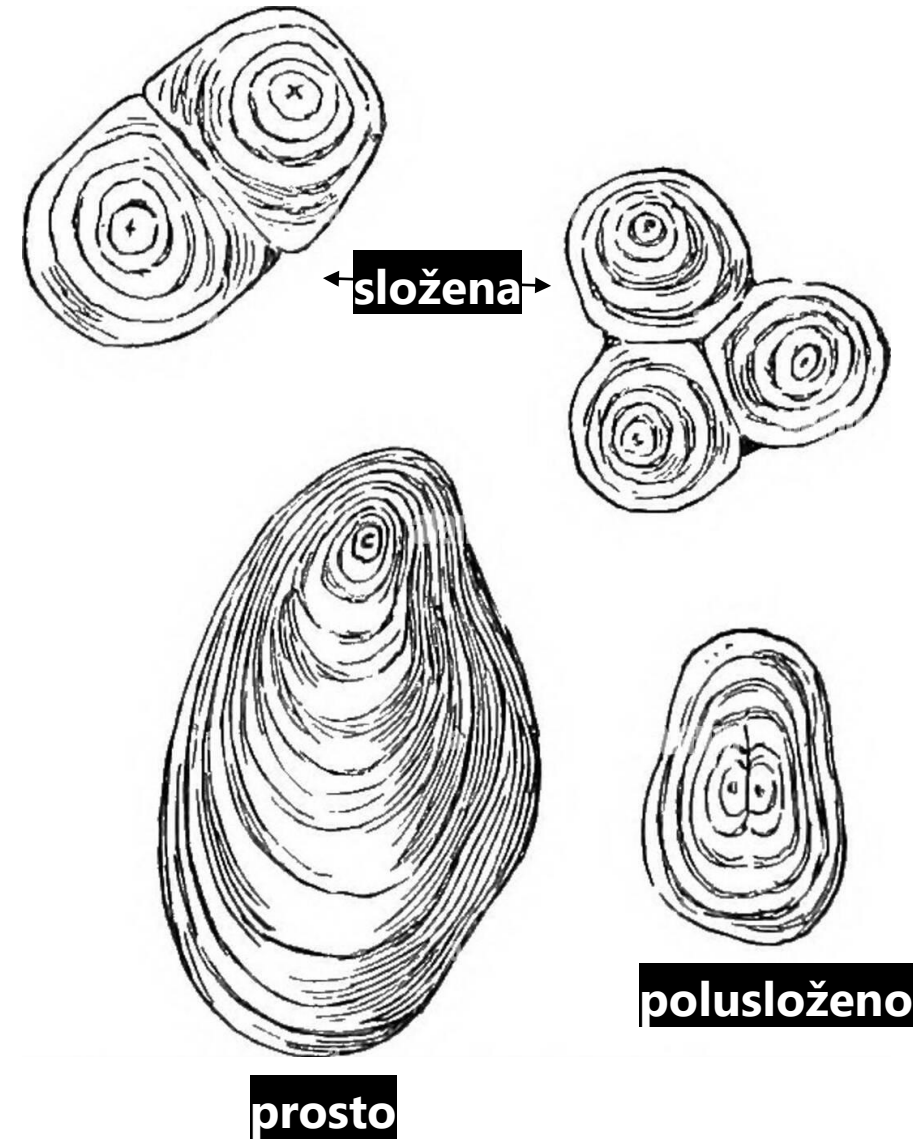
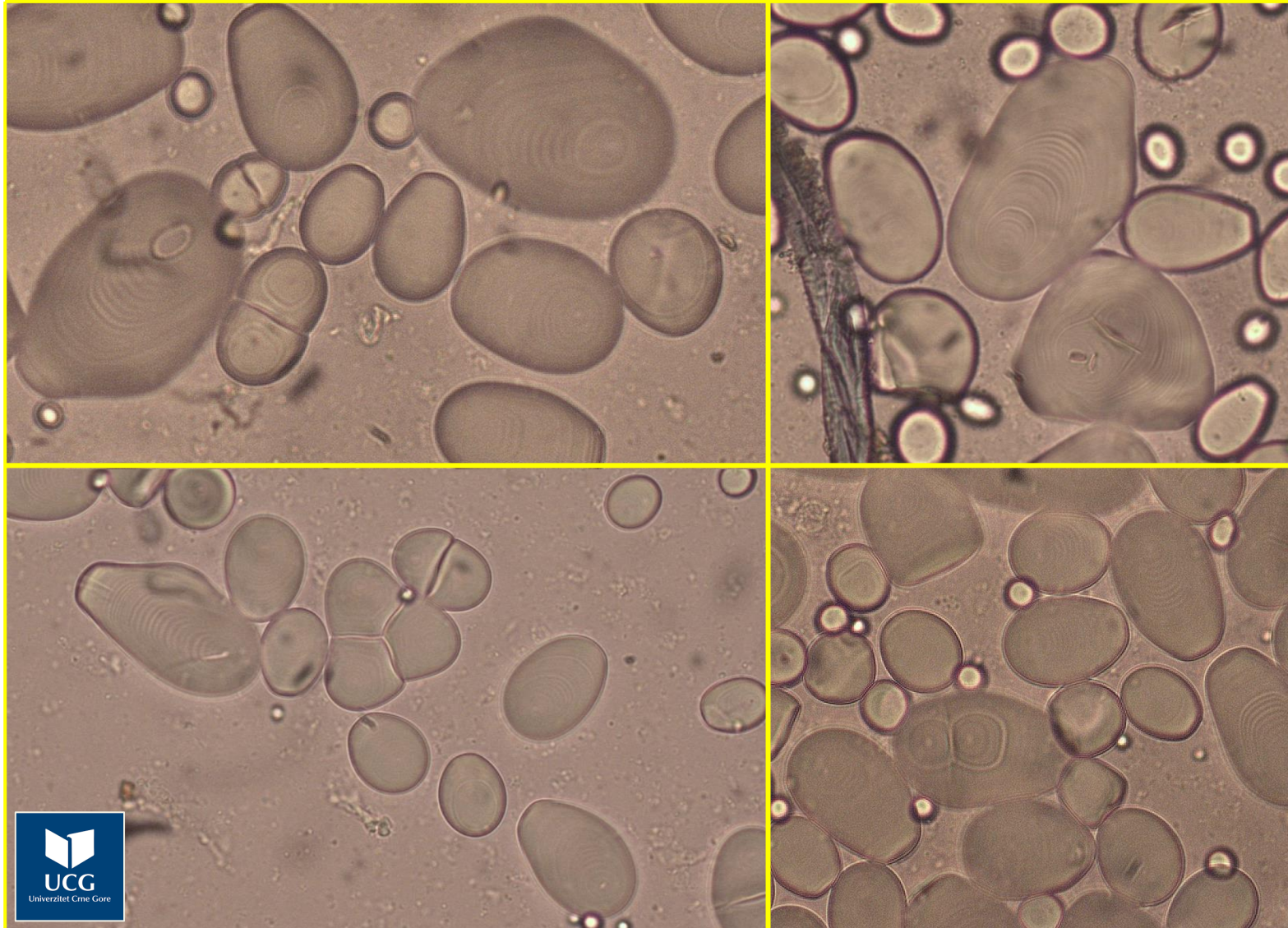
krompir
(*Solanum tuberosum*)



jezgro
(centar)
formiranja

ekscentrični
slojevi

Prosta, složena i polusložena skrobna zrna

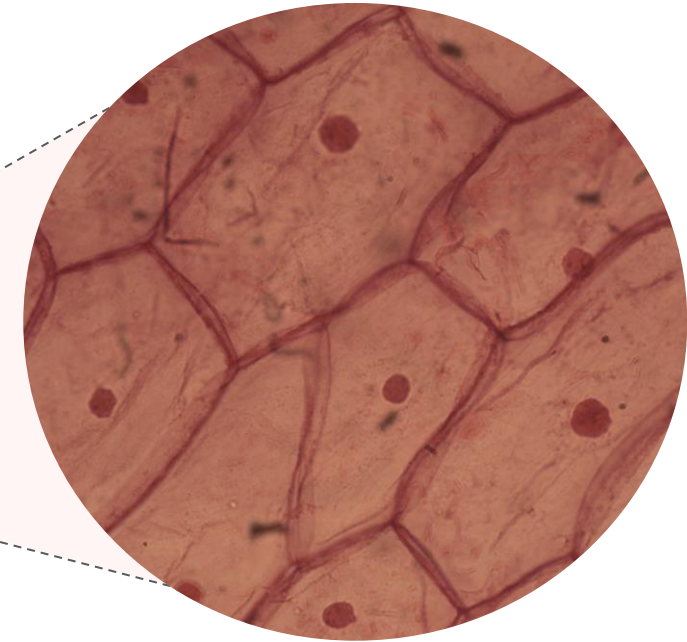
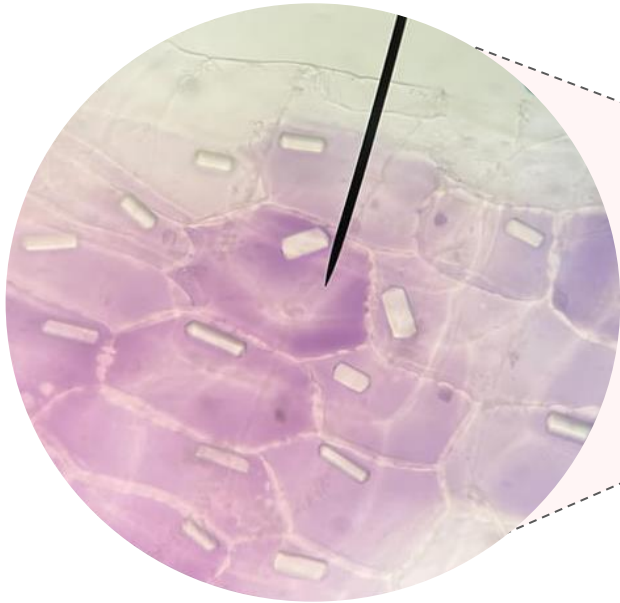


DODATAK 1:

- 1) Lukovica crnog luka: djelovi za mikroskopsko posmatranje**
- 2) Pravljenje nativnog preparata: lukovica crnog luka**
- 3) Pravljenje nativnog preparata: krtola krompira**

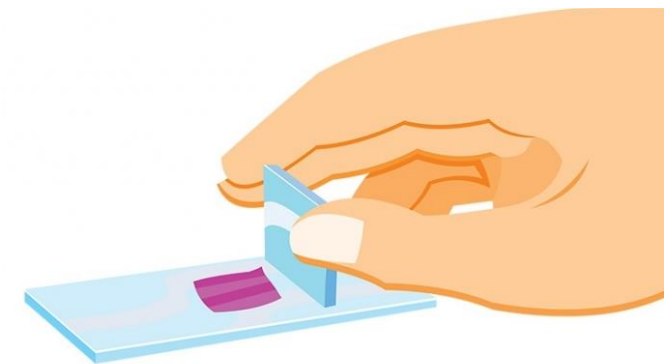
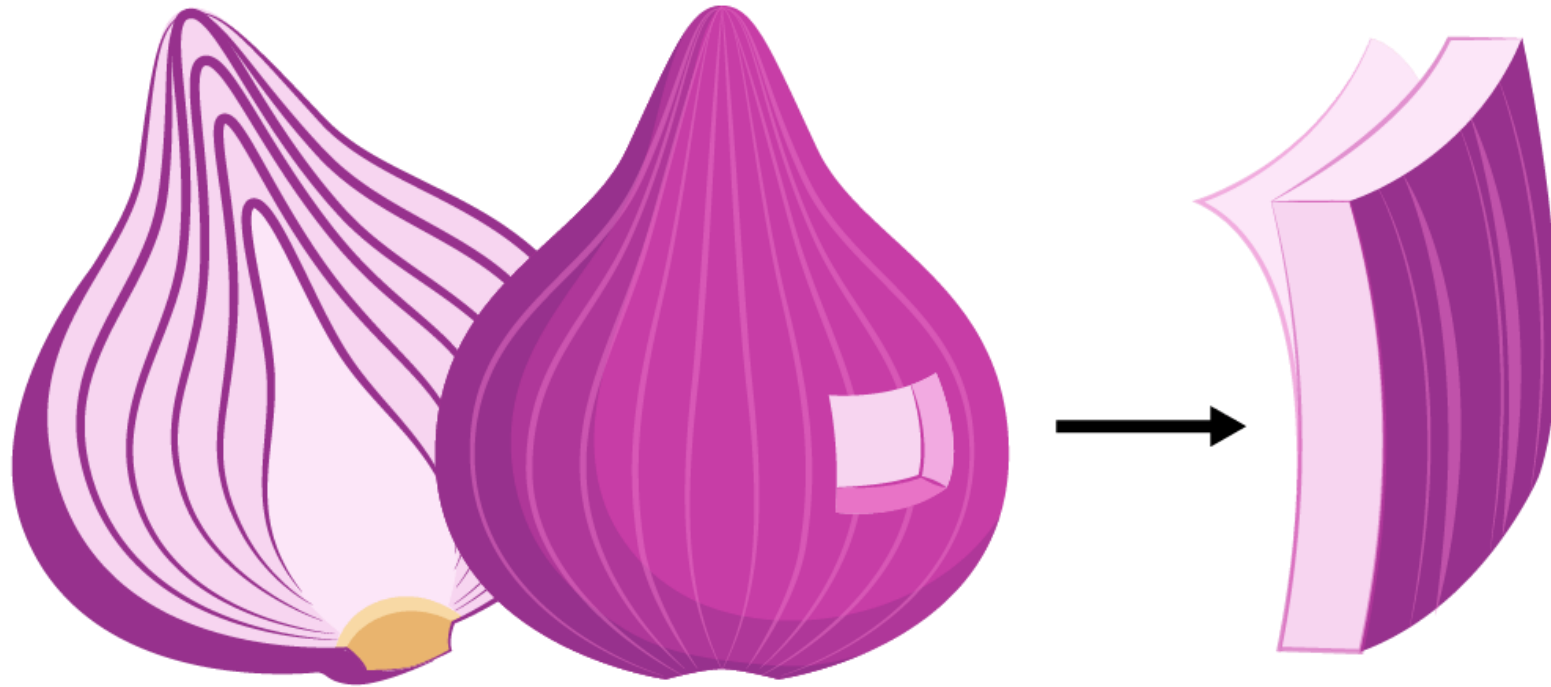
1) Lukovica crnog luka: djelovi za mikroskopsko posmatranje

listovi tunike za
posmatranje kristala

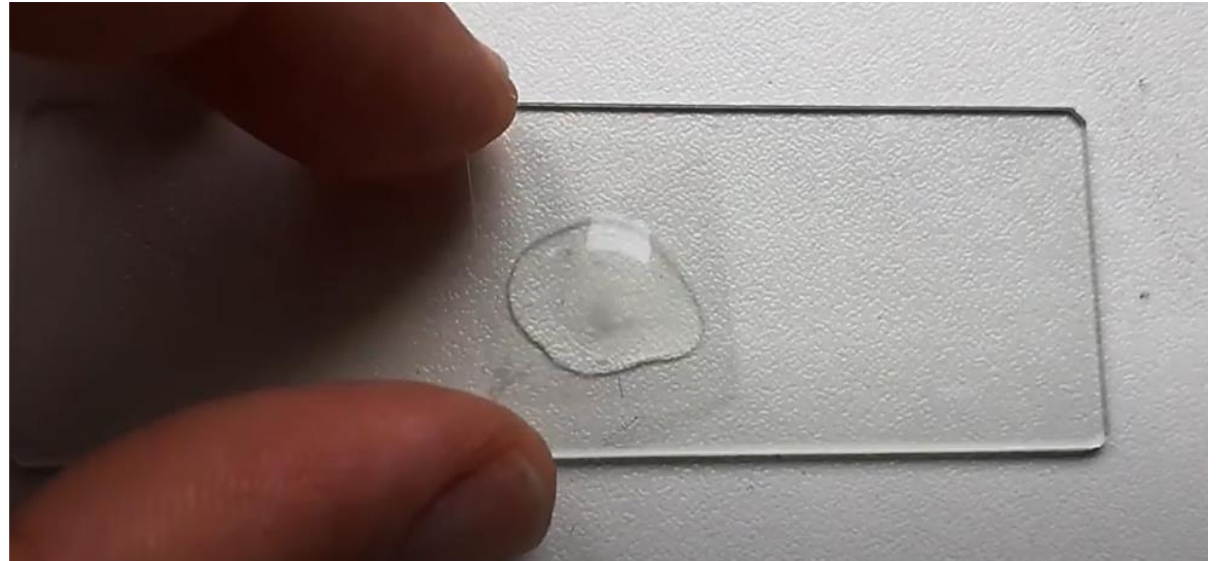
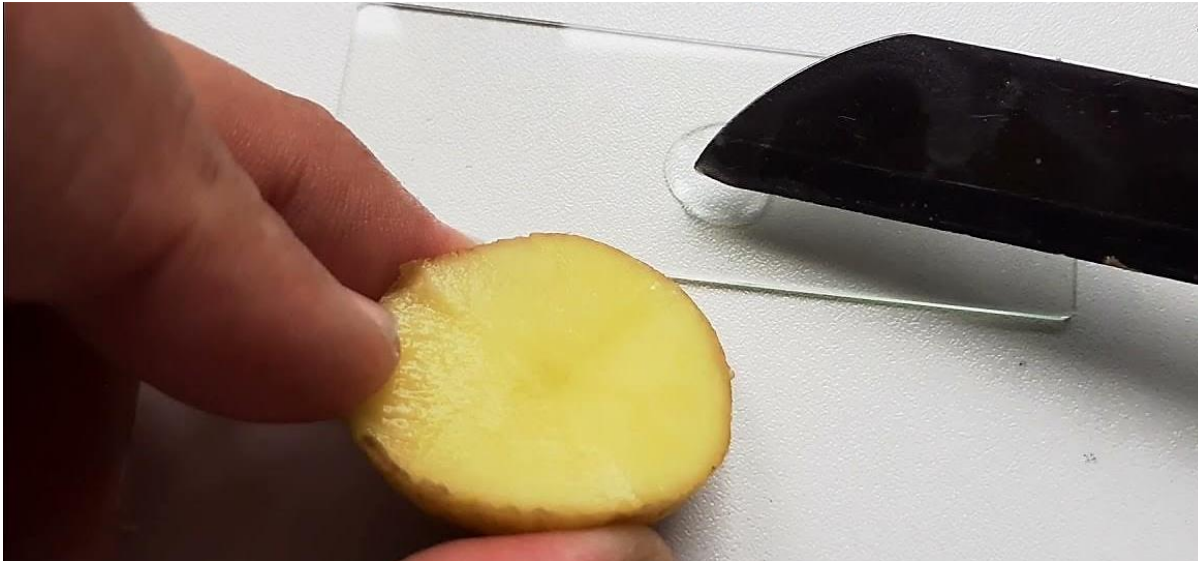
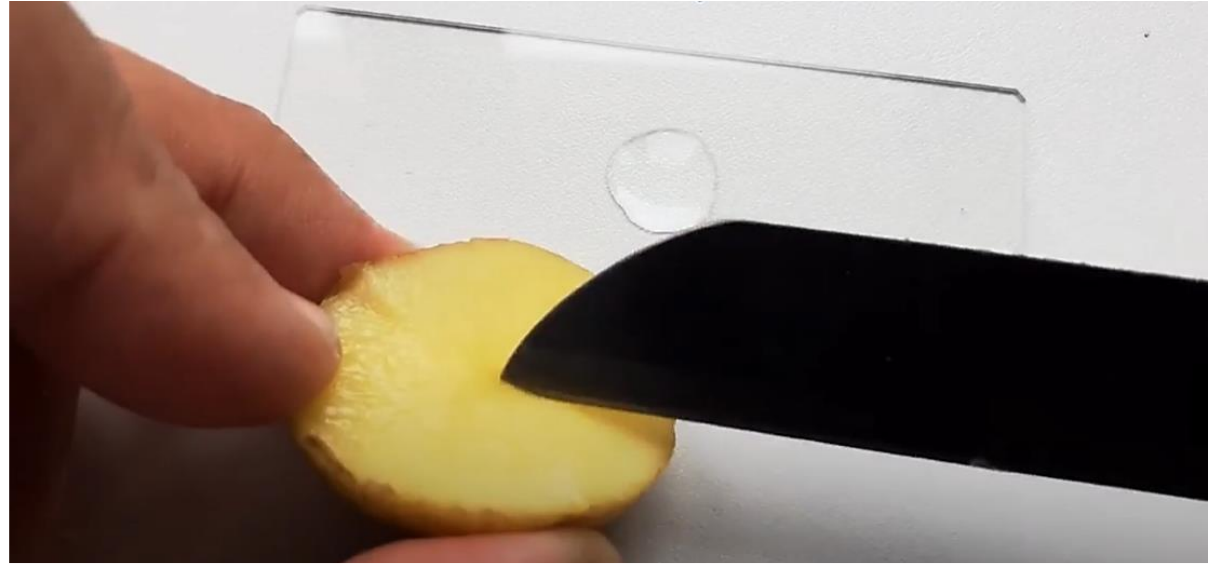


mesnati listovi za
posmatranje dijelova ćelije

2) Pravljenje nativnog preparata: lukovica crnog luka



3) Pravljenje nativnog preparata: krtola krompira

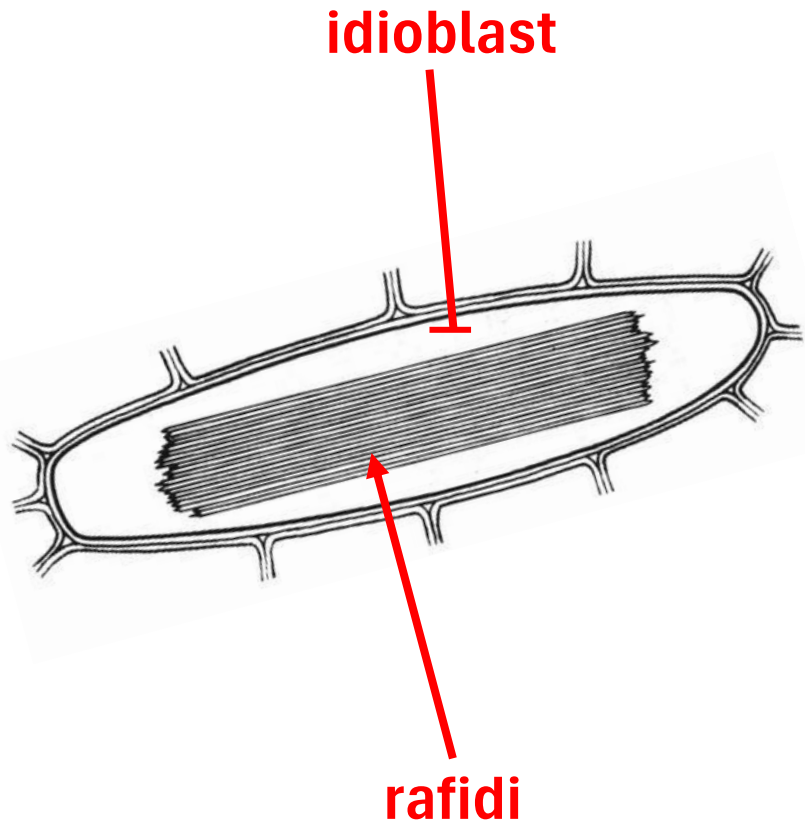


DODATAK 2:

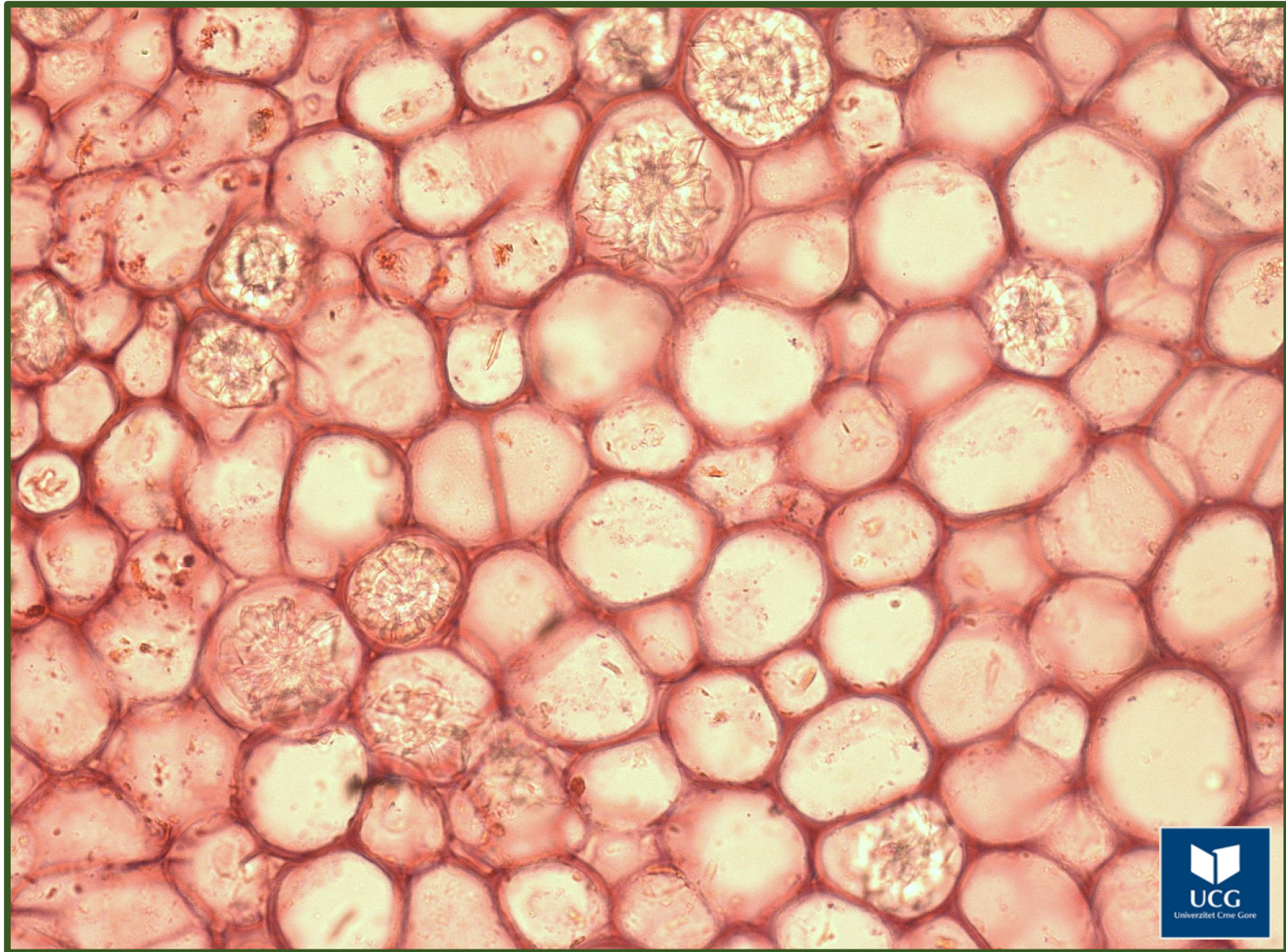
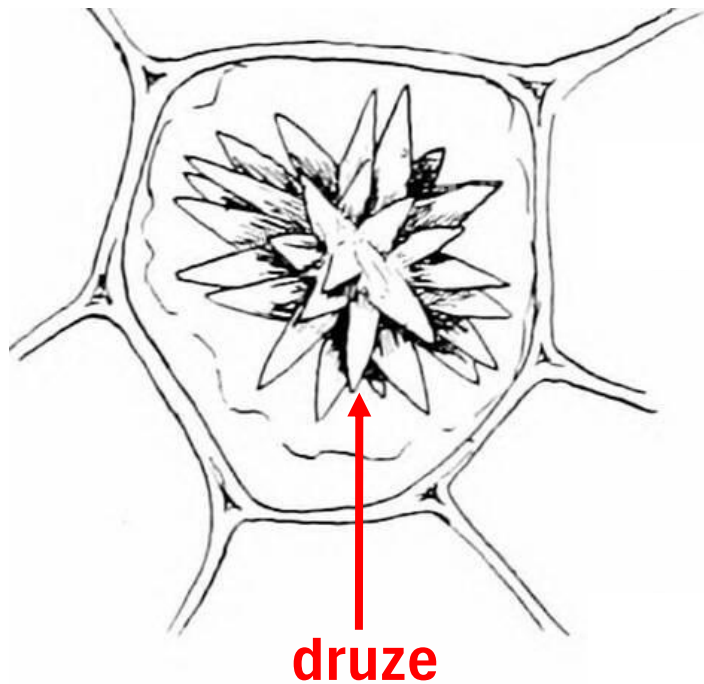
Šeme i mikroskopski preparati za prepoznavanje:

- A) Rafidi (grupisani kristali) u parenhimu lista agave (*Agave* sp.)**
- B) Kristalne družice u parenhimu lisne drške oraha (*Juglans regia*)**
- C) Pojedinačni kristali u ćelijama tunike lukovice crnog luka (*Allium cepa*)**
- D) Cistolit u ćelijama epidermisa lista fikusa (*Ficus elastica*)**
- E) Jamice u zidu ćelija srži stabla paviti (*Clematis vitalba*)**

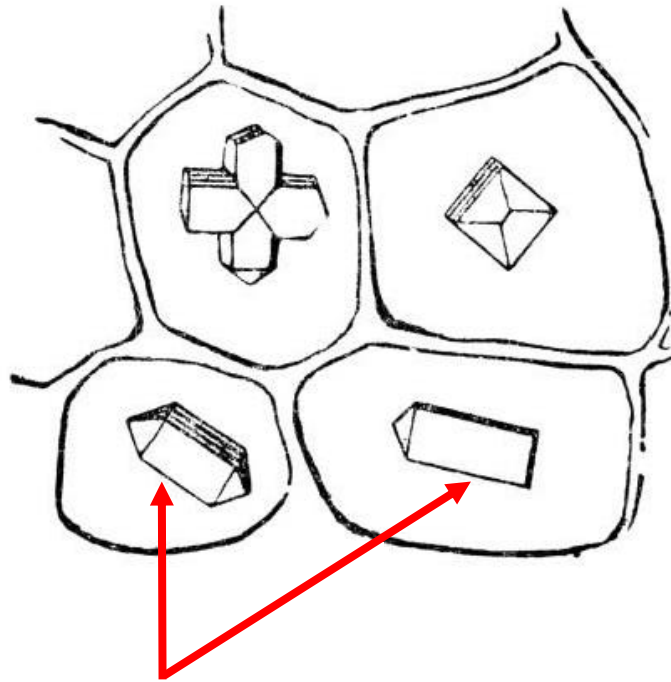
A) Rafidi (grupisani kristali) u parenhimu lista agave (*Agave* sp.)



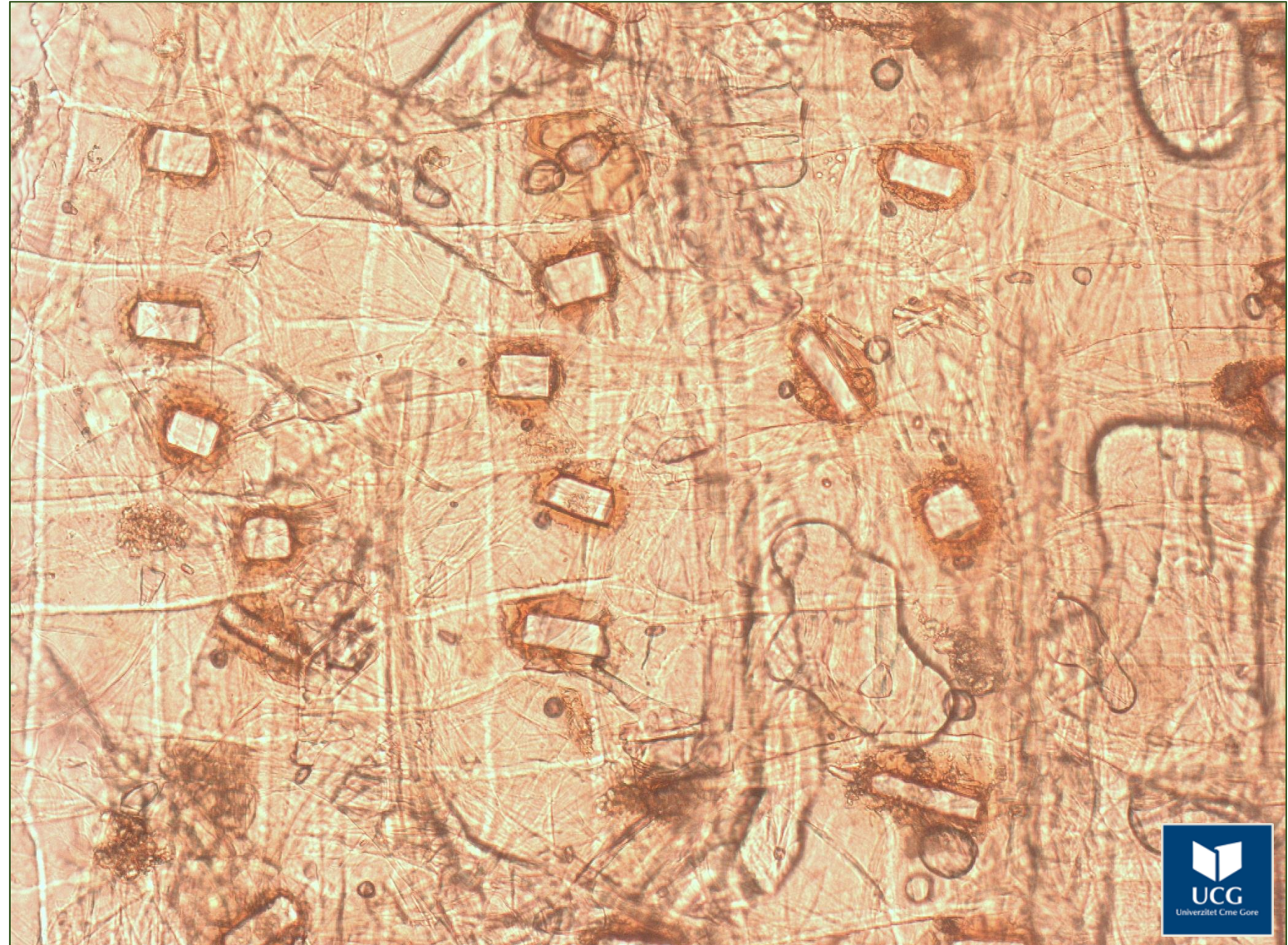
B) Kristalne druze u parenhimu lisne drške oraha (*Juglans regia*)



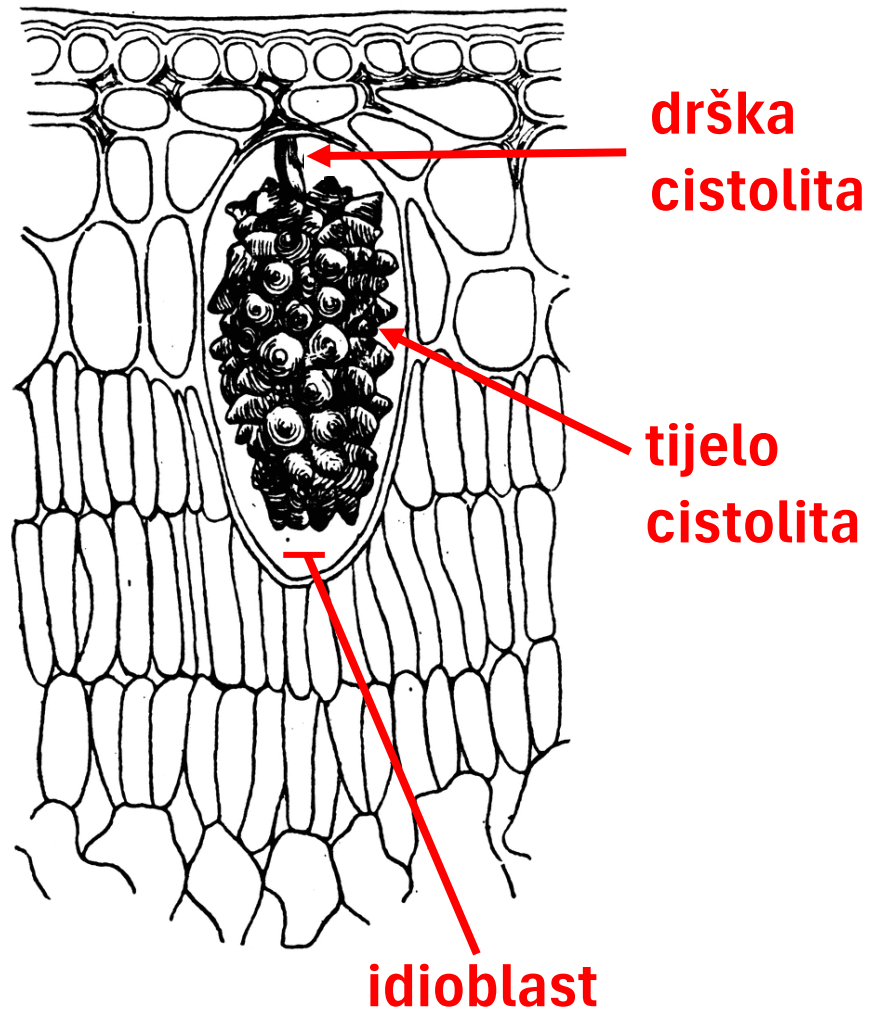
C) Pojedinačni kristali u ćelijama tunike lukovice crnog luka (*Allium cepa*)



**pojedinačni
kristali**



D) Cistolit u ćelijama epidermisa lista fikusa (*Ficus elastica*)



E) Jamice u zidu ćelija srži stabla paviti (*Clematis vitalba*)

