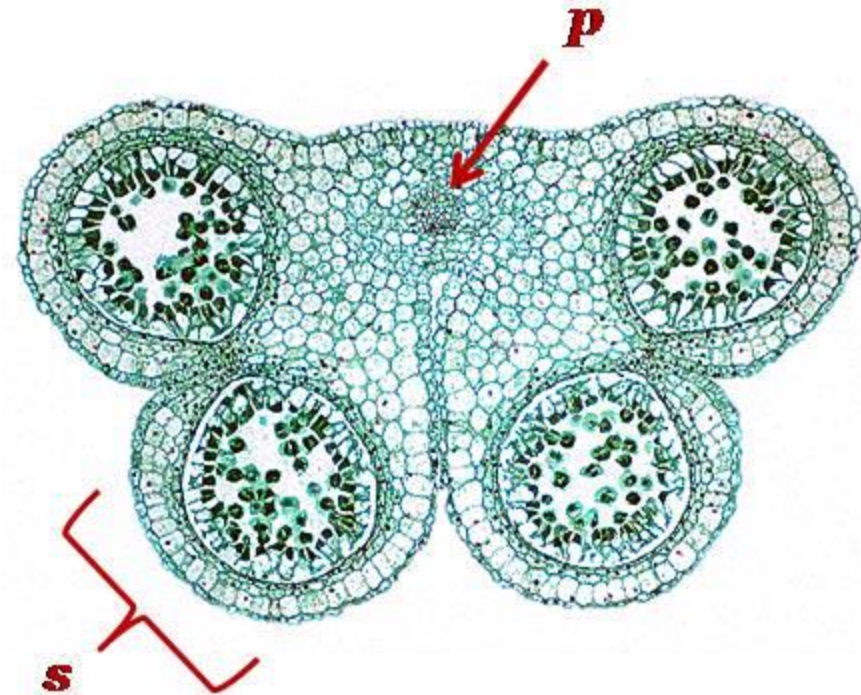
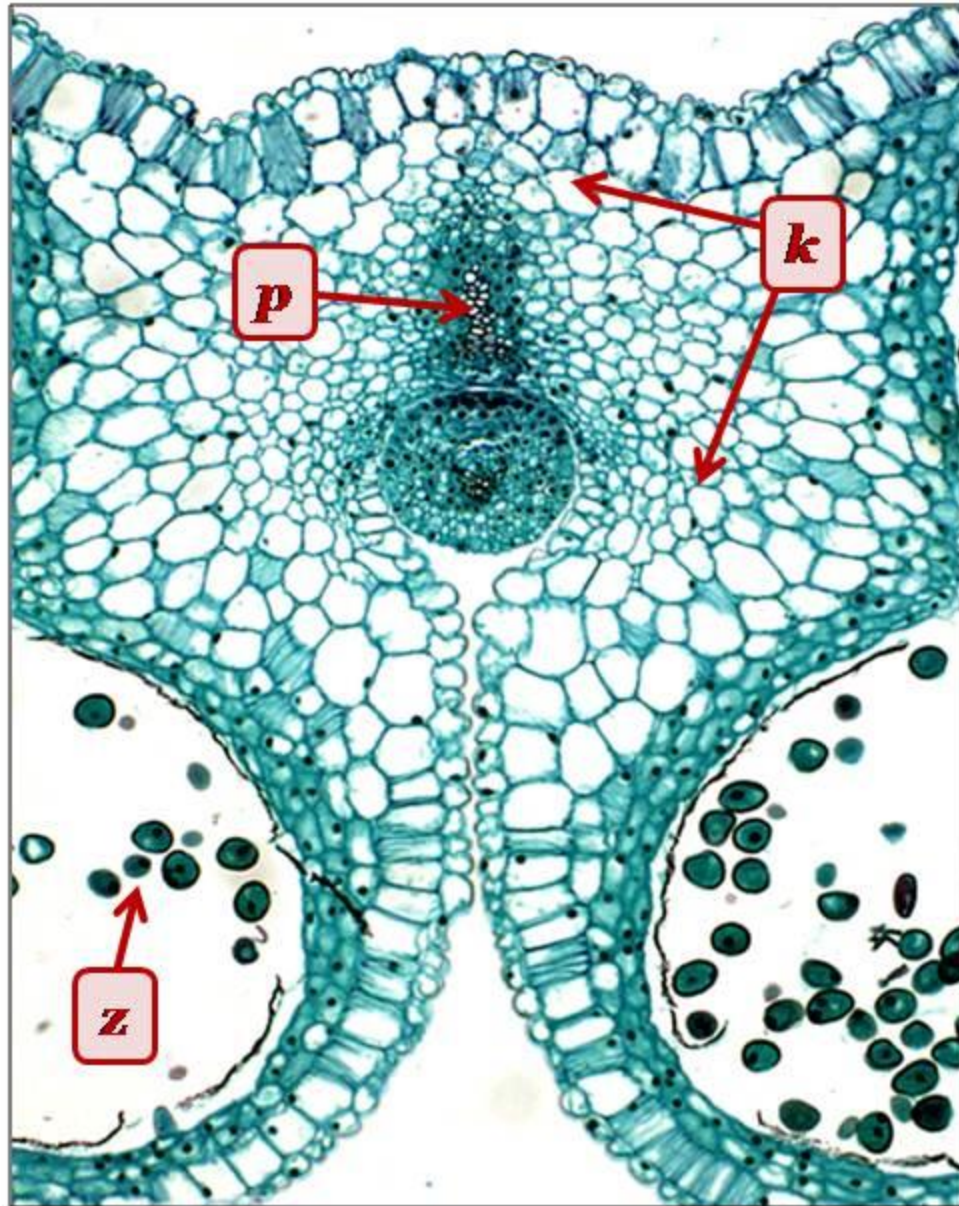


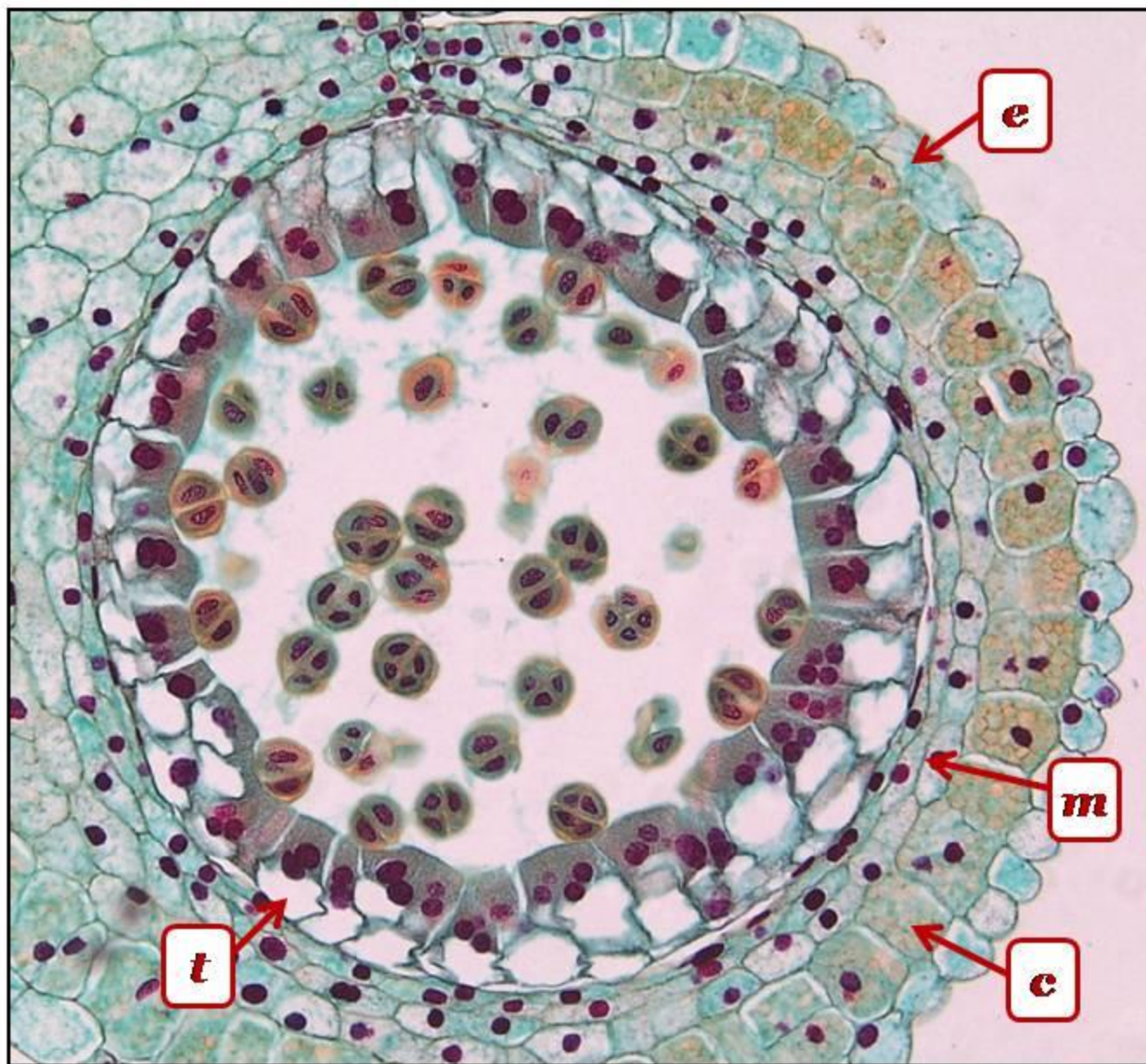
## Presjek kroz anteru prašnika



**k** – konektiv      **z** – polenova zrna  
**p** – provodni      **s** – polenova kesica  
snopić



# Presjek kroz zid antere prašnika



**e** – epidermis

**c** – endotecijum

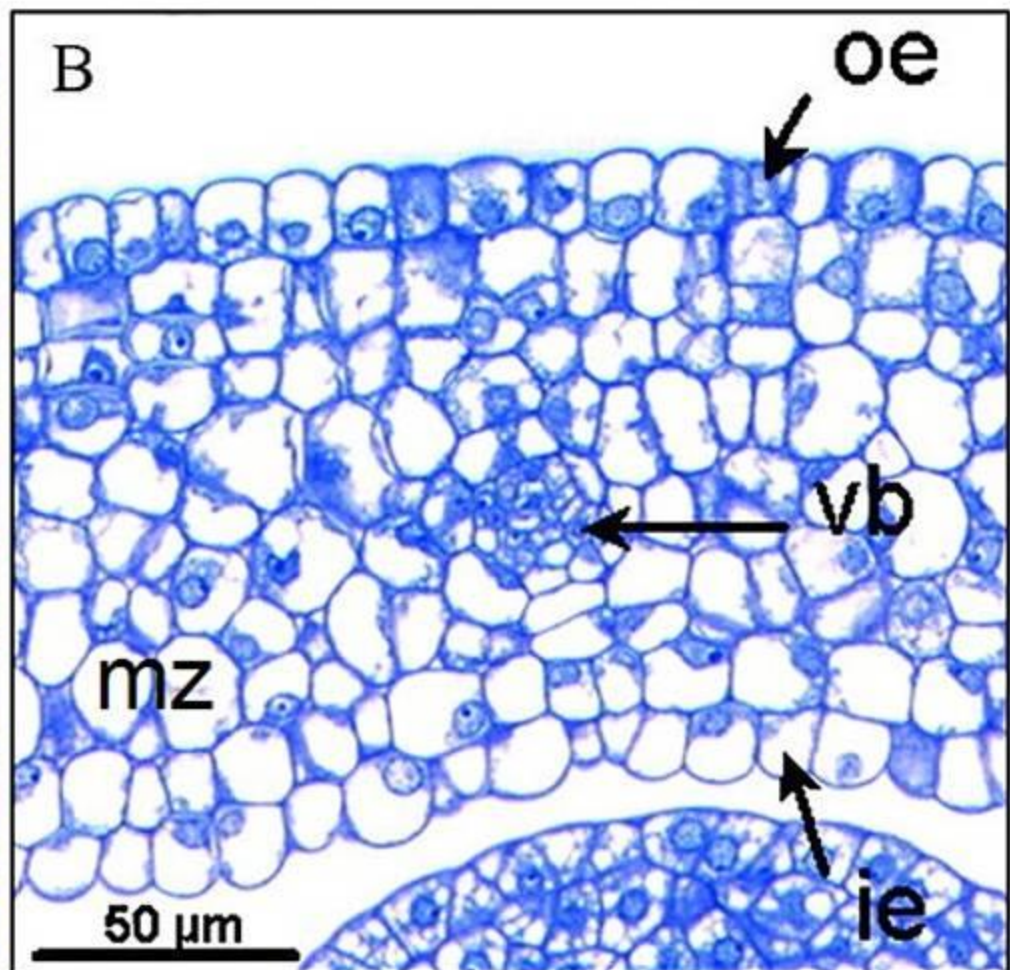
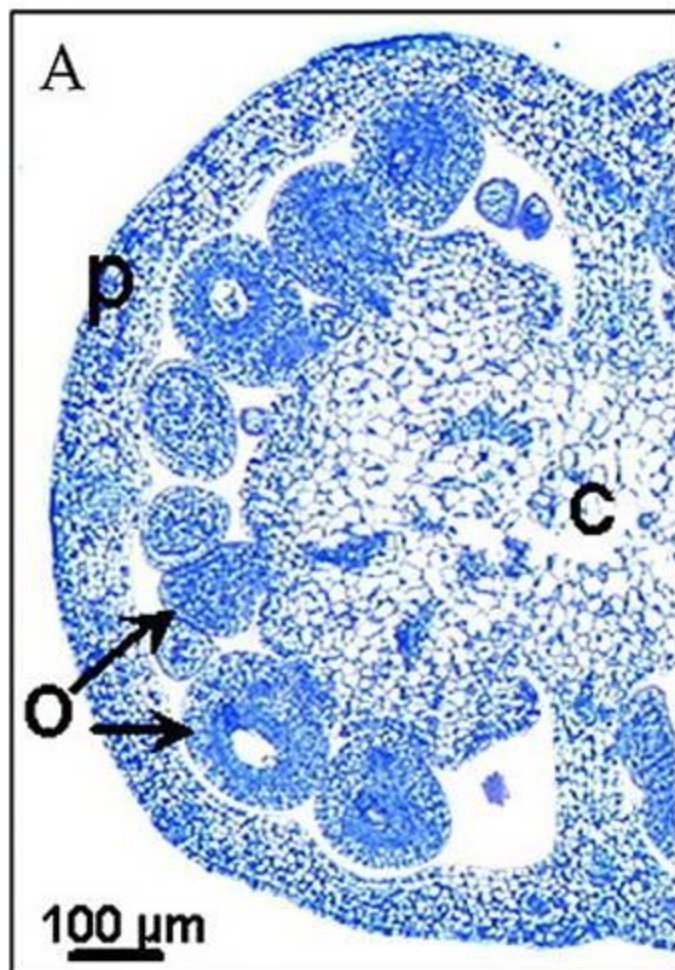
**m** – medusloj

**t** – tapetum

hipodermis



## Poprečni presjek plodnika (A) i zid plodnika (B)

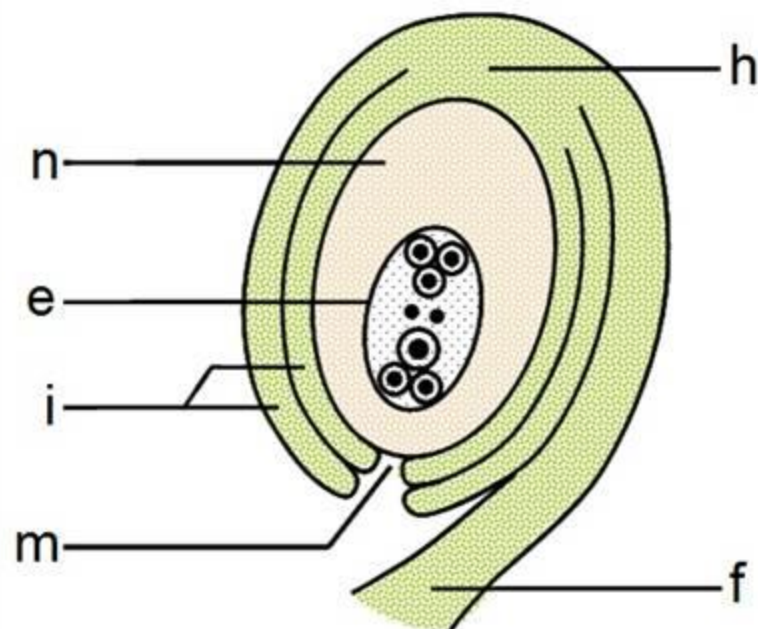
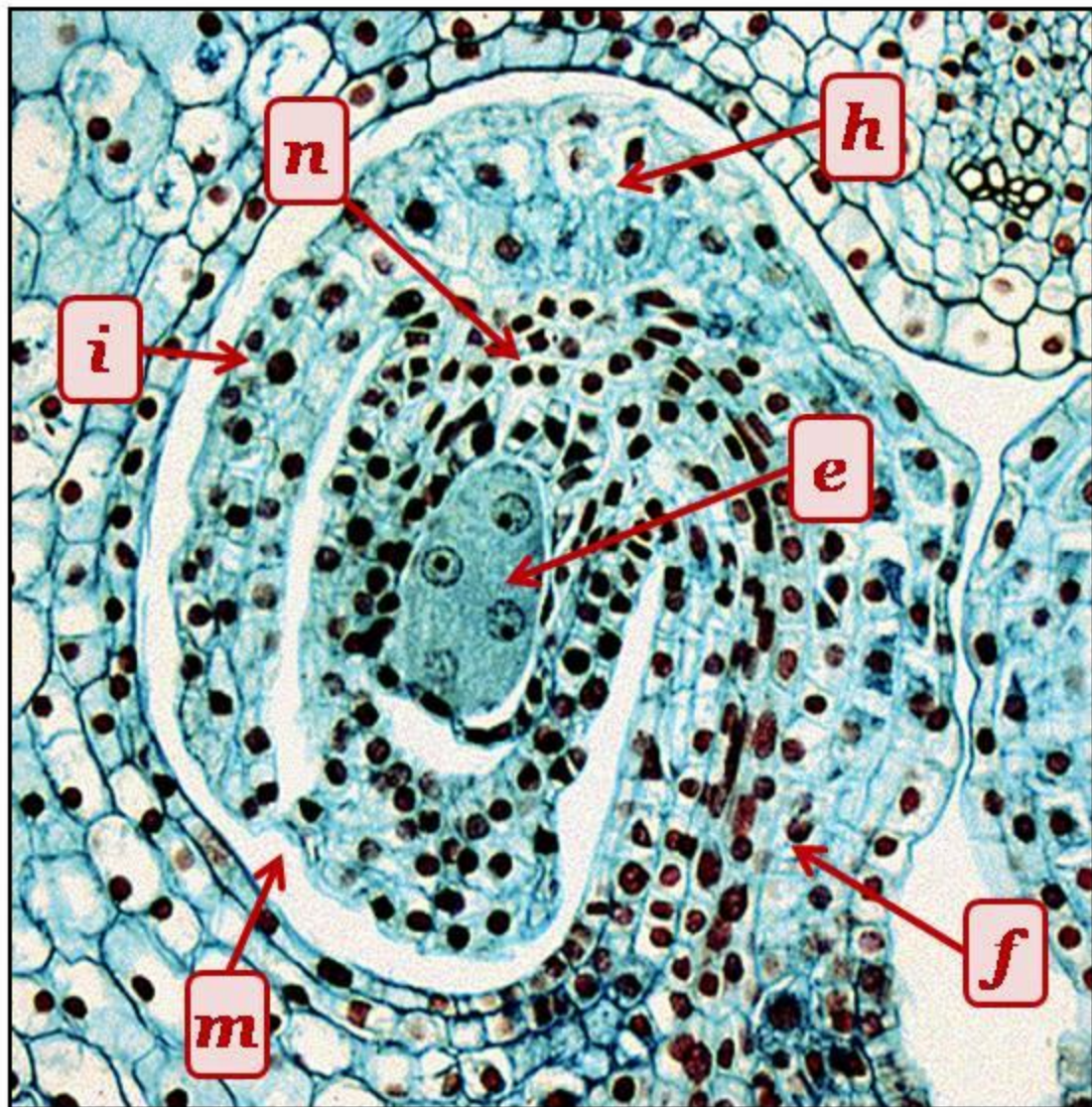


**p** – zid plodnika  
**c** – placenta  
**o** – sjemeni zameci

**oe** – epidermis na spoljašnjoj površini  
**ie** – epidermis na unutrašnjoj površini  
**vb** – provodni snopić  
**mz** – mezofil



## Sjemeni zametak



**i** – integument

**n** – nucelus

**e** – embrionova kesa

**m** – mikropila

**h** – halaza

**f** – funiculus