

# Dodatni materijal

**Porodica**  
**CARIOPHYLLACEAE**

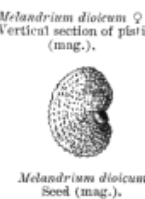
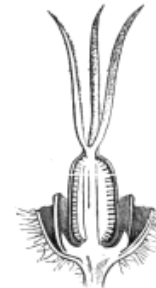
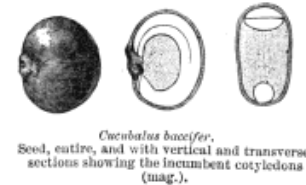
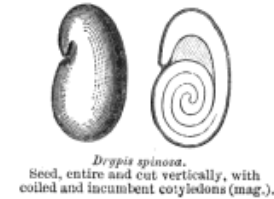
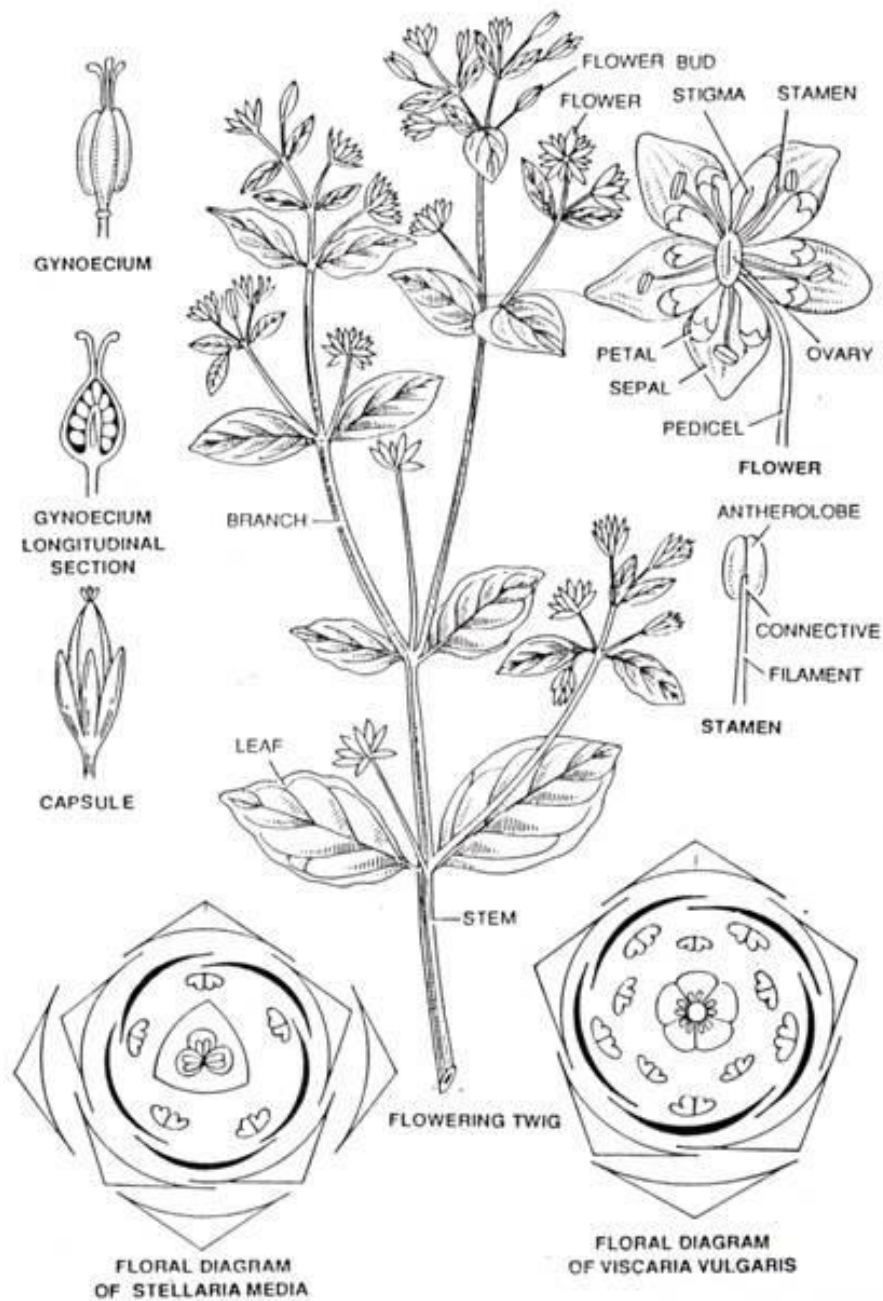
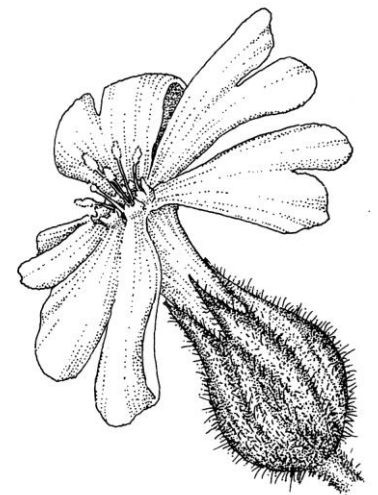
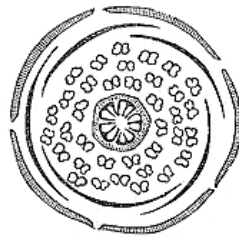


Fig. 23.2. Caryophyllaceae. *Stellaria media* Linn. Eng. Chickweed; Verna. **Morolia.**



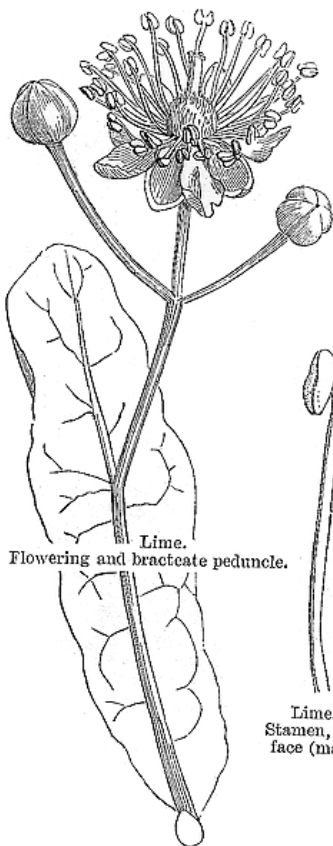
**Porodica**  
**TILIACEAE**



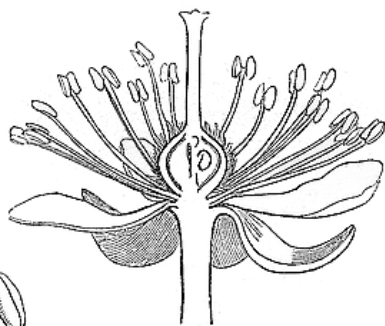
Lime. Diagram.



Lime.  
Transverse section of ovary  
(mag.).



Lime.  
Flowering and bracteate peduncle.



Lime.  
Vertical section of flower (mag.).  
Vertical section of flower



Lime.  
Pistil (mag.).



Lime,  
Embryo laid open (mag.).



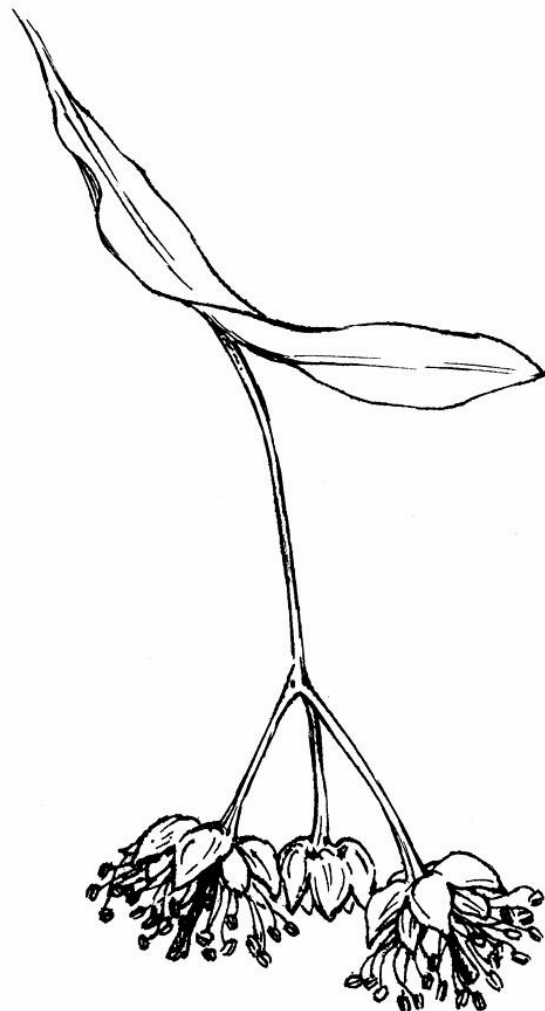
Lime.  
Fruit (mag.).



Lime.  
Stamen, outer  
face (mag.).



Lime.  
Seed, entire and cut  
vertically (mag.).



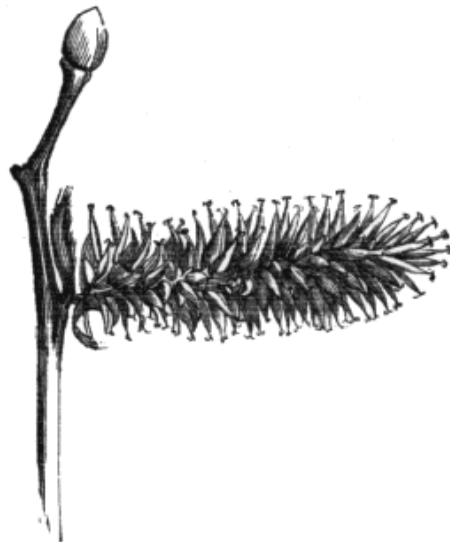
**Porodica**  
**SALICACEAE**





Willow.  
Embryo (mag.).

Willow.  
♂ catkin.



Willow. (*Salix caprea*).  
♀ catkin.



Willow.  
♂ flower (mag.).



Willow.  
♀ flower (mag.).



Willow.  
Fruit (mag.).



Poplar.  
♂ flower (mag.).



Poplar.  
Transverse section  
of ovary  
(mag.).



Black Poplar. (*Populus nigra*).  
♂ catkins.



*Populus virginiana*.  
♀ catkin.



Willow.  
Seed (mag.).

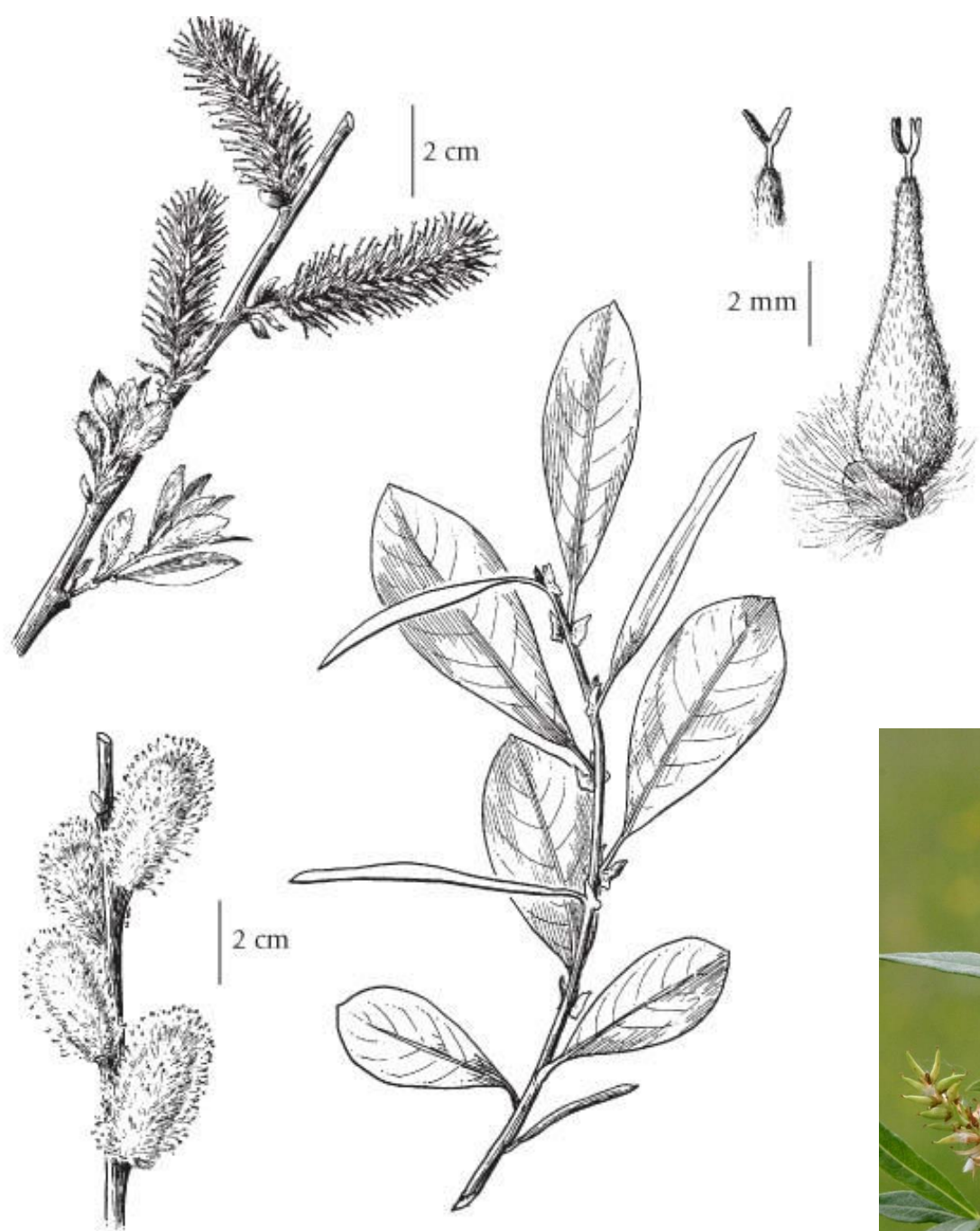


Willow.  
Transverse section  
of ovary  
(mag.).



Poplar.  
♀ flower (mag.).





**Porodica**  
**BRASSICACEAE**



Wallflower.  
(*Cheiranthus cheiri*.)



Wallflower.  
Flower cut vertically (mag.).



Wallflower.  
Pistil (mag.).



Wallflower.  
Silique.



Wallflower.  
Androecium and  
nectaries.



*Parolinia*.  
Silique with valves  
prolonged  
into forked horns  
(mag.).



*Cochlearia*.  
Androecium and pistil (mag.).



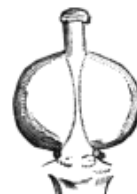
*Cochlearia officinalis*.



*Cochlearia*.  
Flower (mag.).



*Cochlearia*.  
Silicle (mag.).



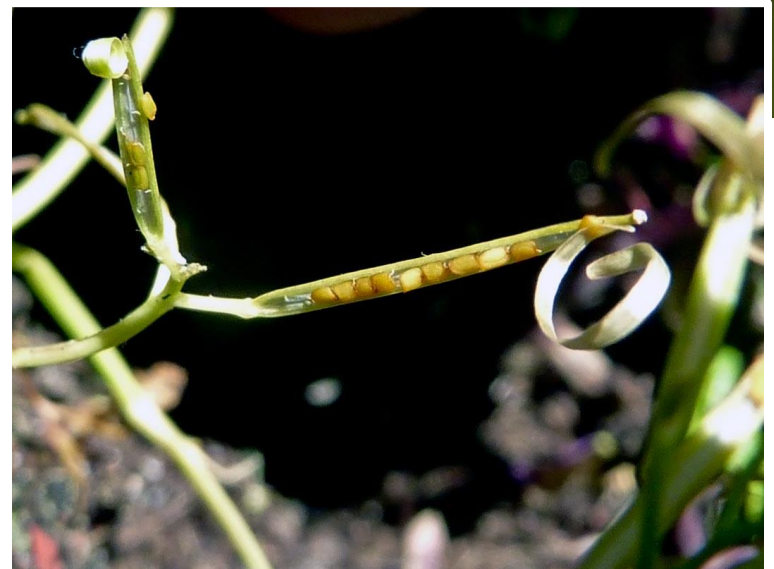
*Cochlearia*.  
Pistil (mag.).



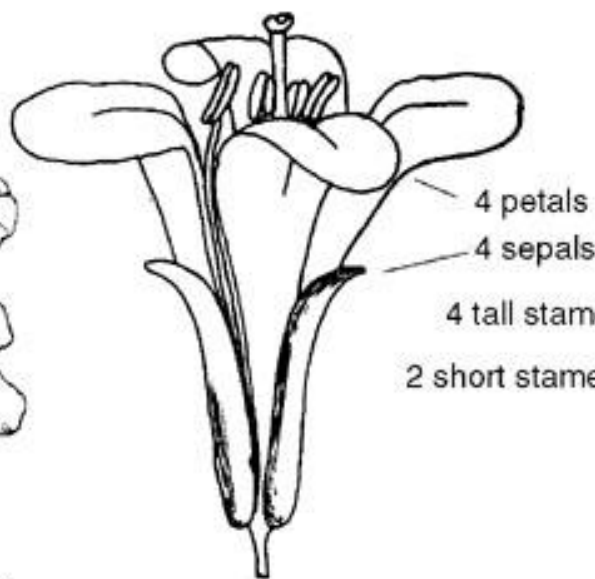
*Cochlearia*.  
Flower cut vertically (mag.).



*Cochlearia*.  
Seed, entire, and cut both ways to show the accumbent  
cotyledons (mag.).







## Patterns of the Mustard Family

Mustard seed pods come in many shapes and sizes, but always occur on the plant in the same radial pattern around the stalk, a "raceme".





**Porodica**  
**ROSACEAE**





*Agrimony.*  
(*Agrimonia*  
*Eupatoria.*)



*Agrimony.* Flower (mag.).



*Agrimony.* Flower cut vertically (mag.).



*Agrimony.*  
Flower after fertilization.



*Agrimony.*  
Fruit.



*Agrimony.*  
Transverse section of fruit.



*Agrimony.*  
Seed (mag.).



*Poterium.* ♂ flower (mag.).



*Cliffortia.* ♀ flower.



*Poterium.* Vertical section of ♂ flower (mag.).



*Poterium.*  
Young carpel (mag.).



*Poterium.*  
Diagram.



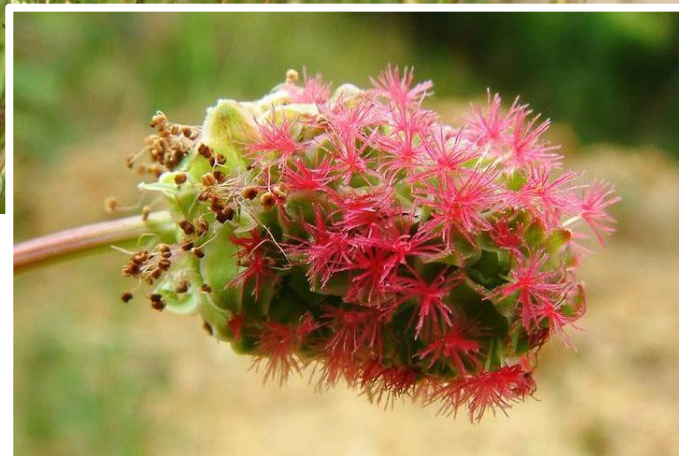
*Poterium.*  
Seed (mag.).



*Poterium.*  
Fruit (mag.).



*Poterium Sanguisorba.*







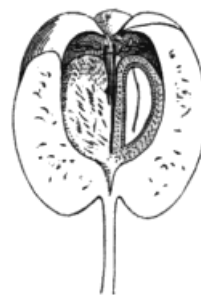
*Sorbus.*  
Diagram.



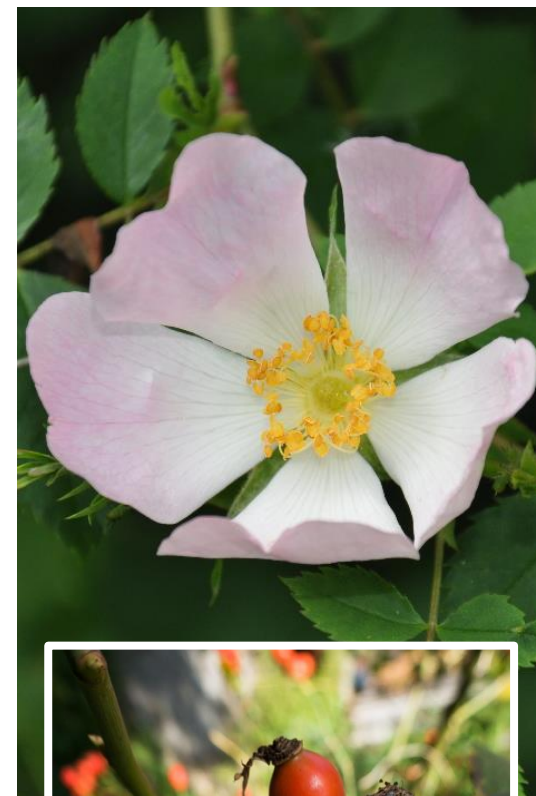
*Cotoneaster.*  
Carpel, ripe and cut vertically (mag.).



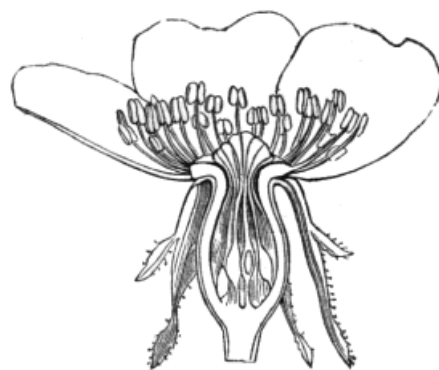
*Cotoneaster.*  
Fruit.



*Cotoneaster.*  
Fruit cut vertically (mag.).



Sweetbriar. (*Rosa rubiginosa.*)



Rose. Flower cut vertically (mag.).



Rose.  
Diagram.



Rose.  
Young carpel (mag.).



**Porodica**  
**FABACEAE**



Broom.  
(*Sarcophamnus scoparius*.)



Broom. Diagram.



Broom.  
Flower (mag.).



Broom. Pistil  
(mag.).



Broom. Standard.



Broom. Androecium and pistil.



Broom.  
Wing.



Broom.  
Keel.



Broom.  
Seed, entire and cut  
vertically (mag.).



Broom.  
Calyx.



Broom.  
Young androecium.



Furze.  
Seed, entire and cut  
transversely.



Broom. Fruit.



*Astragalus*. Open fruit.



Trefoil. (*Trifolium pratense*.)

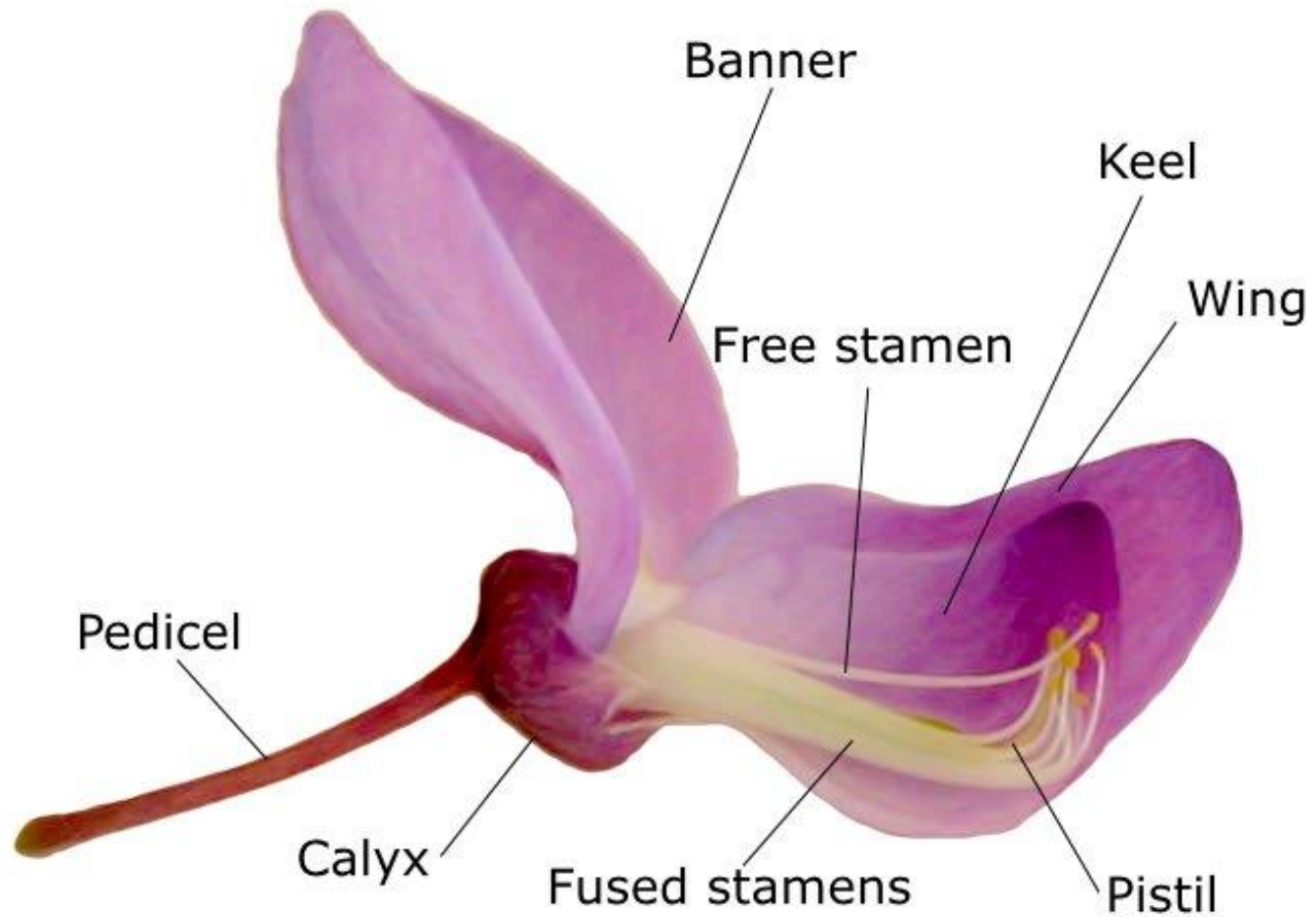


Lucern. Fruit (mag.).



Sainfoin. Fruit.

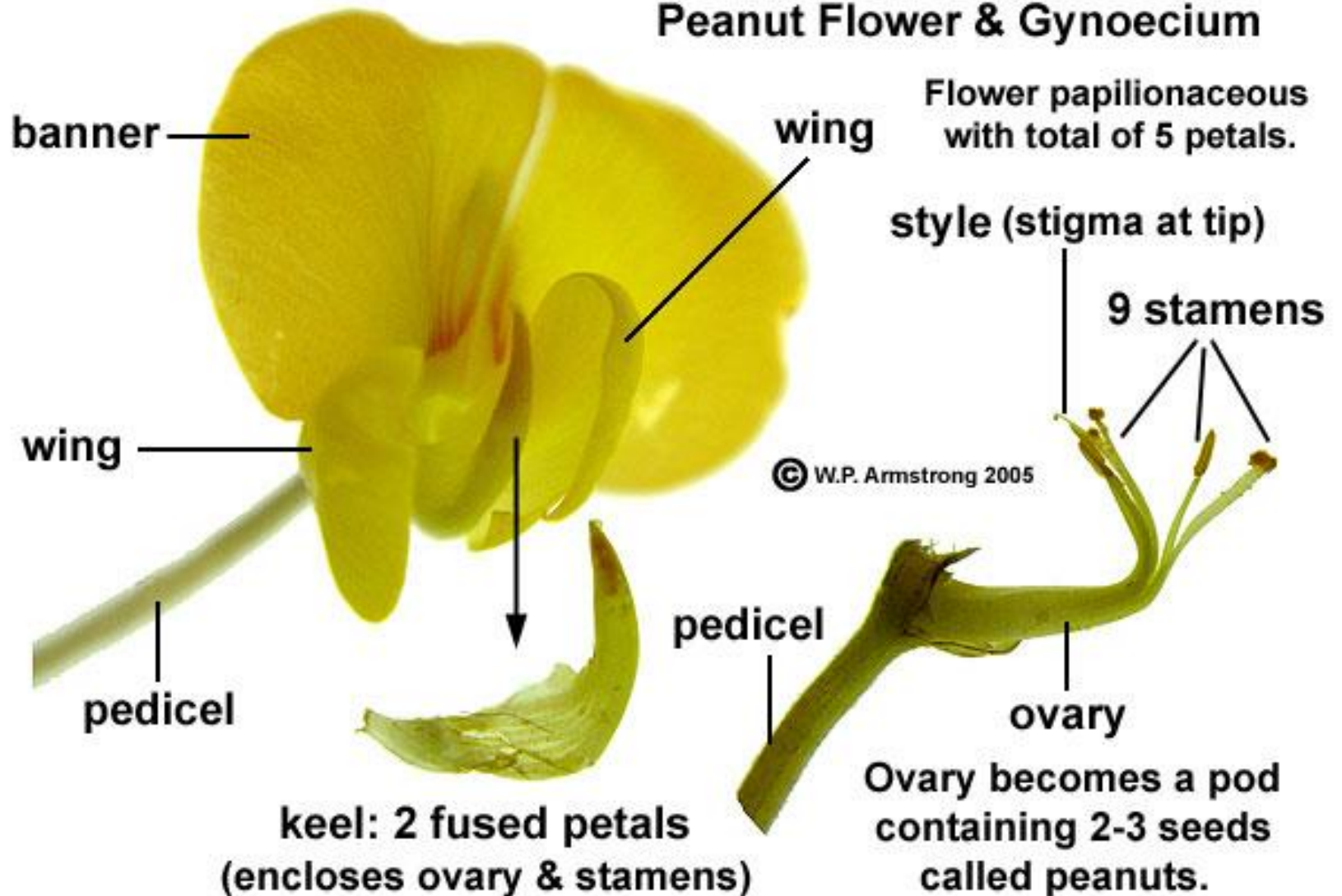






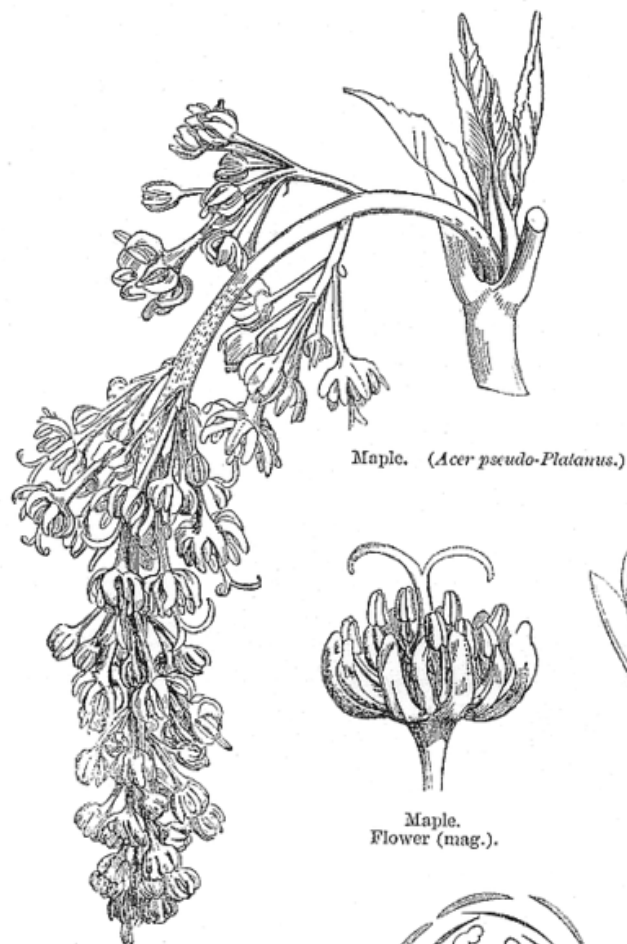
## Peanut Flower & Gynoecium

Flower papilionaceous  
with total of 5 petals.

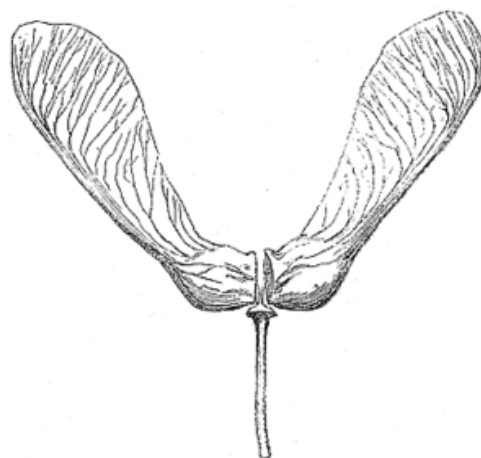


**Porodica**  
**ACERACEAE**

# ACERACEAE



Maple. (*Acer pseudo-Platanus*.)



Maple. Fruit.



Maple.  
Flower (mag.).



Maple.  
Vertical section of flower (mag.).



Maple.  
Embryo (mag.).



Maple.  
Seed entire and cut (mag.).



Maple.  
Diagram.



Maple.  
Young pistil (mag.).



*Acer Negundo*.  
♂ flower.



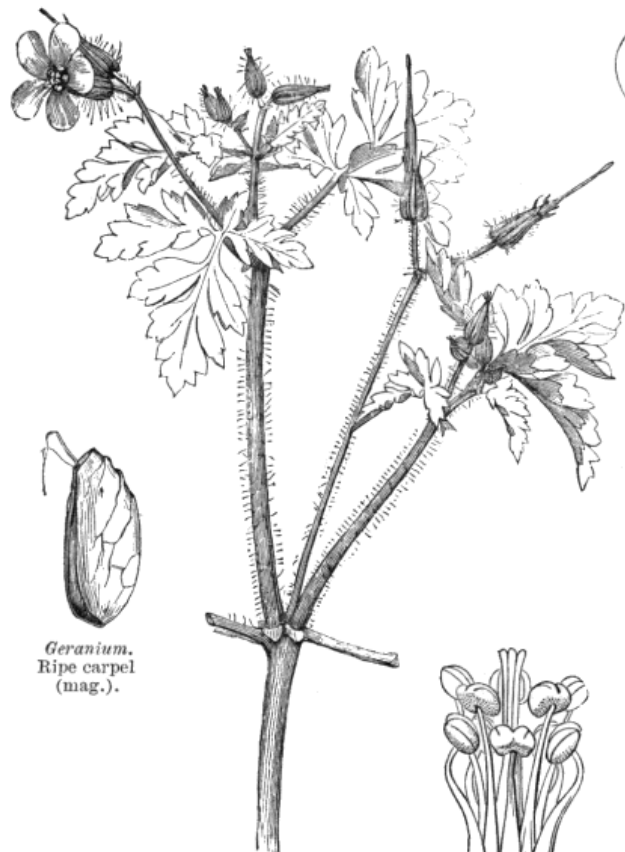
564.- *Acer platanoides*



565.- *Acer pseudo-platanus*



**Porodica**  
**GERANIACEAE**



*Geranium.*  
Ripe carpel  
(mag.).

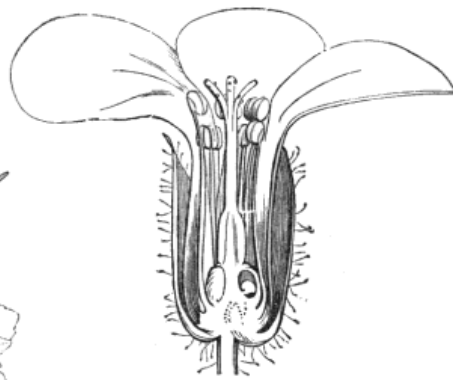
Herb Robert.  
(*Geranium Robertianum.*)



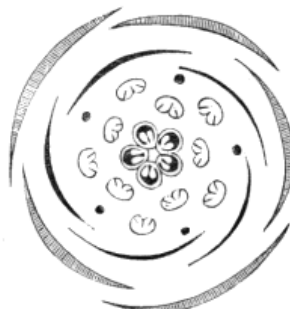
*Geranium.*  
Seed cut  
transversely (mag.).



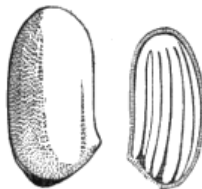
*Geranium.*  
Androecium and pistil (mag.).



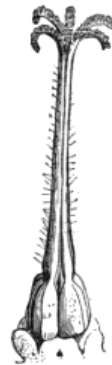
*Geranium.*  
Vertical section of flower (mag.).



*Geranium.*  
Diagram.



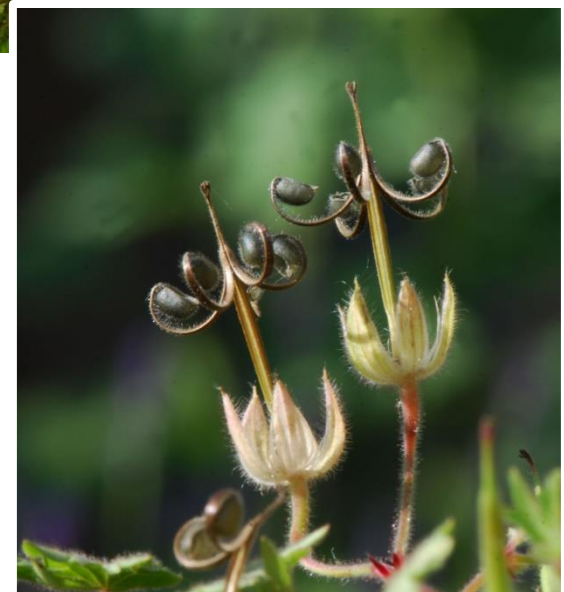
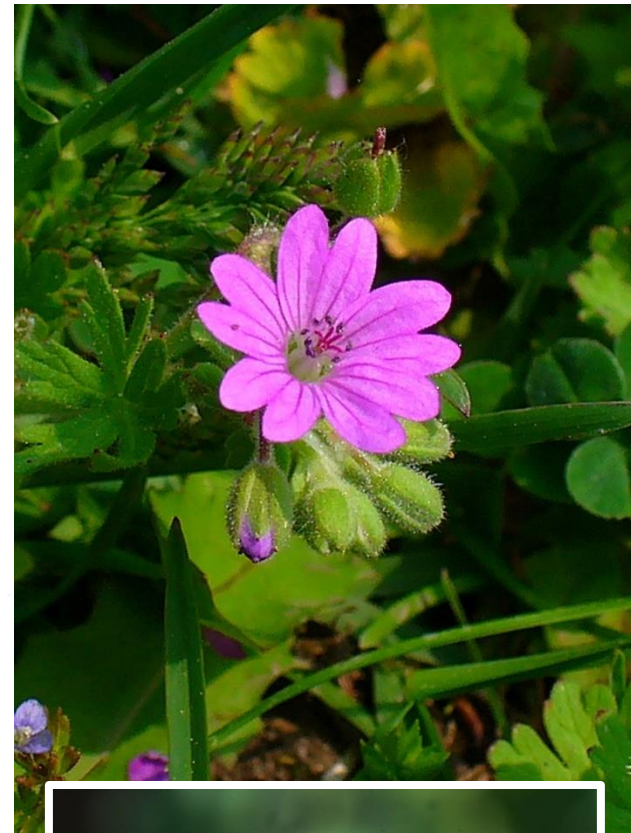
*Geranium.*  
Seed, entire and cut  
vertically (mag.).



*Geranium.*  
Pistil (mag.).



*Geranium.*  
Fruit (mag.).



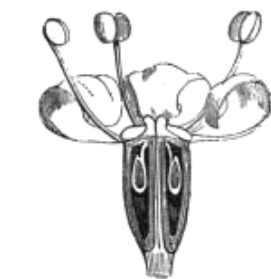
**Porodica**  
**APIACEAE**



*Foeniculum officinale*.  
Umbel and umbellules without involucre or involucels.



Fennel.  
Flower (mag.).



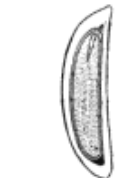
Fennel. Flower cut vertically (mag.).



Fennel.  
Diagram.  
Calyx suppressed.



Fennel.  
Fruit (mag.).  
2-partite carpophore.



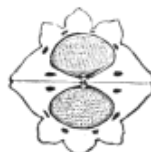
Fennel.  
Transverse section of  
carpel (mag.).



Fennel.  
Transverse section of  
fruit (mag.).  
Carpels with five  
primary sides, furrows  
1-vittate; commissural  
face 2-vittate.



*Aethusa*.  
Vertical section of a  
semi-globose carpel,  
with thick wall,  
showing the minute  
embryo at the top of  
the albumen (mag.).



*Aethusa*.  
Transverse section of fruit (mag.). Carpels  
with five raised and thickened sides: the  
lateral largest; furrows 1-vittate; commissural  
face 2-vittate.



*Aethusa*.  
Fruit.  
Bifid carpophore  
(mag.).



*Aethusa*.  
Umbellule  
with 3-phyllous  
involucre.



Flower

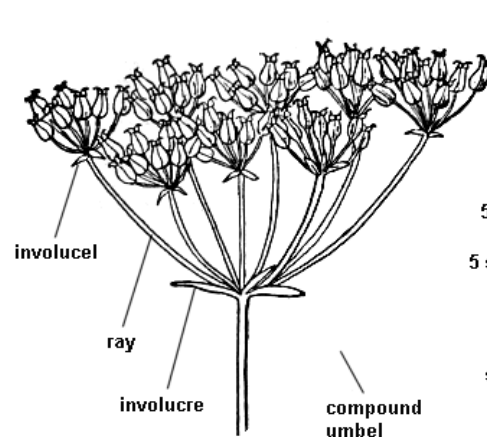


Fruitlet



Cross section  
of fruitlet

## TYPICAL PARSLEY FLOWER



5 petals

5 stamens



style

stylopodium

2-celled fruit





**Porodica**  
**BORAGINACEAE**





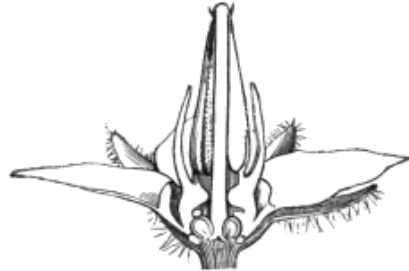
Borage. (*Borago officinalis*.)



Borage.  
Flower.



*Lycopsis*.  
Irregular flower (mag.).



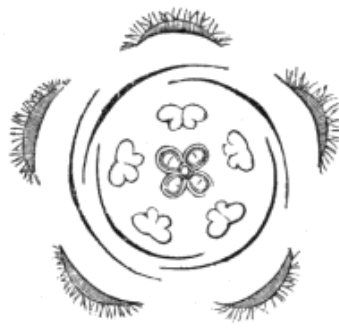
Borage. Flower cut vertically (mag.).



*Pulmonaria officinalis*.



Borage. Pistil (mag.).



Borage. Diagram.



*Myosotis*.  
Fruit entire (mag.).



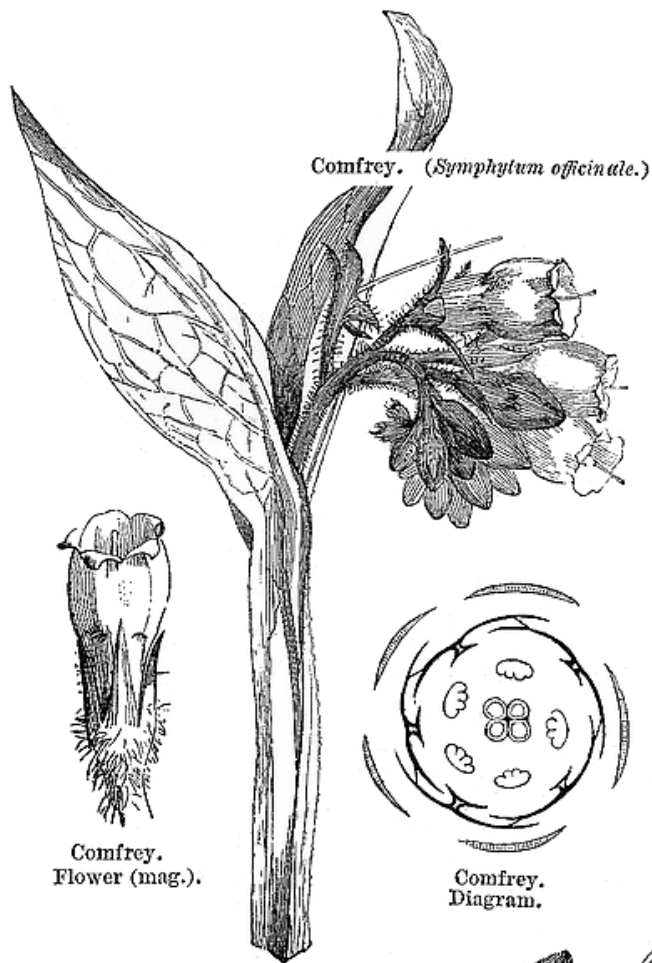
*Myosotis*.  
Fruit cut vertically (mag.).



Comfrey.  
Carpel, entire and cut  
vertically (mag.).





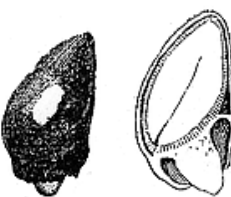


Comfrey. (*Symphytum officinale*.)

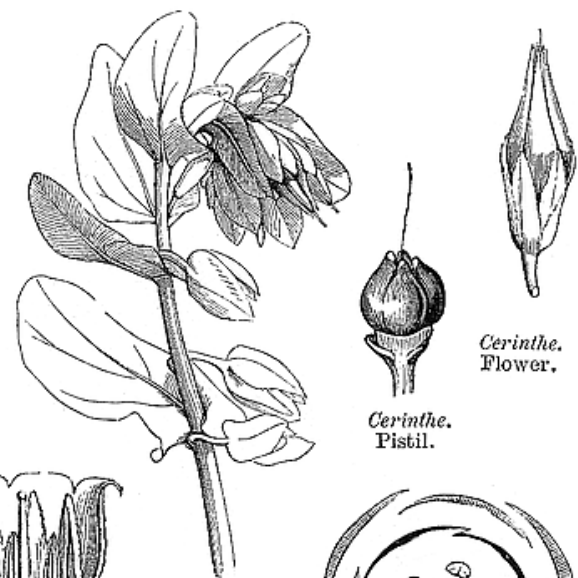
Comfrey.  
Flower (mag.).

Comfrey.  
Diagram.

Comfrey.  
Flower cut vertically (mag.).



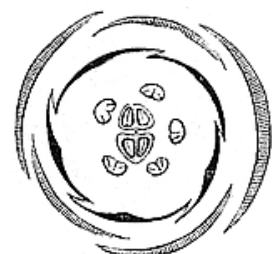
Comfrey.  
Carpel, entire and cut  
vertically (n.ag.).



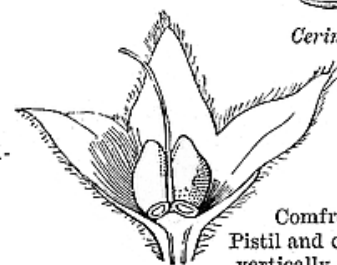
*Cerinthe*.  
Flower.

*Cerinthe*.  
Pistil.

*Cerinthe glabra*.

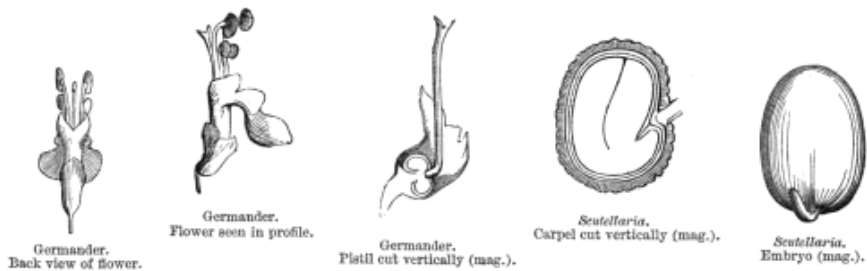


*Cerinthe*. Diagram.



Comfrey.  
Pistil and calyx cut  
vertically (mag.).

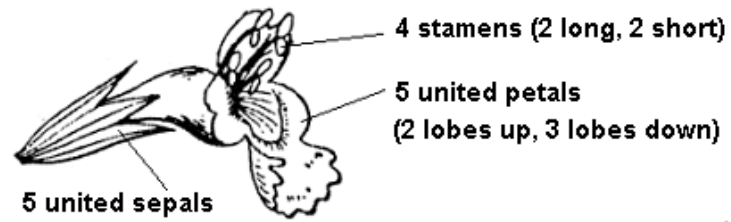
**Porodica**  
**LAMIACEAE**



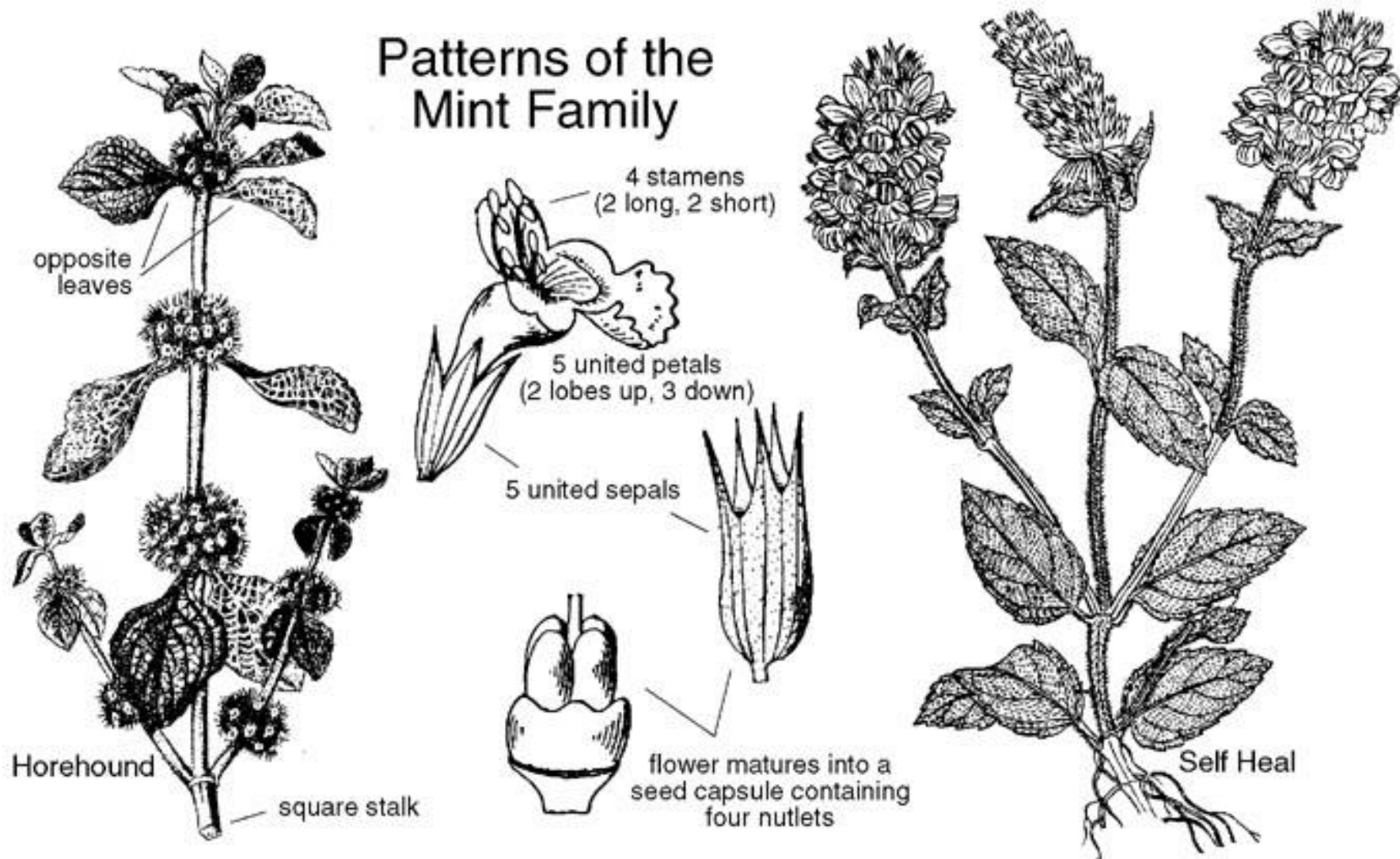
*Lamium album.*



## Typical Mint Flower



## Patterns of the Mint Family







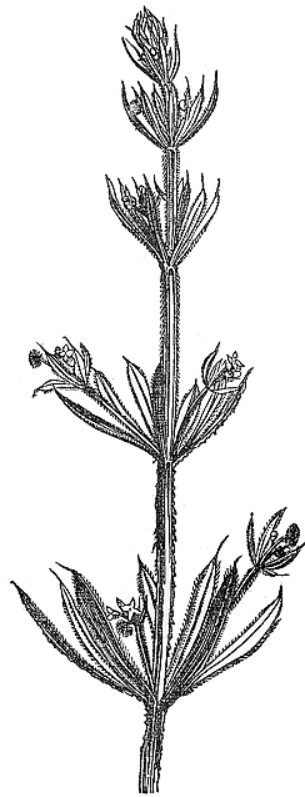




**Porodica**  
**RUBIACEAE**



Madder (*Rubia tinctorum*).



*Galium Aparine*.



*Galium*.  
Flowering branch.



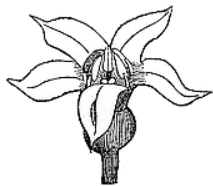
*Galium*.  
Pistil (mag.).



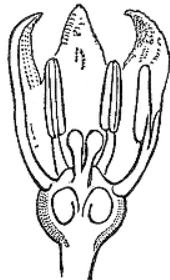
**Flowering  
branch**



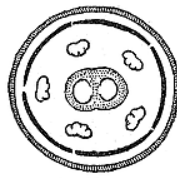
**Pistil**



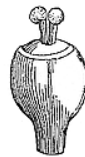
Madder.  
Flower (mag.).



Madder.  
Flower cut vertically  
(mag.).



Madder.  
Diagram.



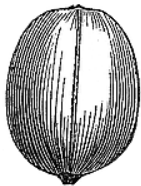
Madder.  
Pistil (mag.).



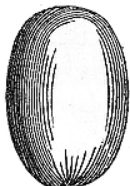
Madder.  
Ovary cut transversely  
(mag.).



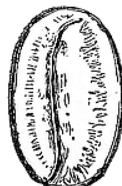
**x-section  
of fruit**



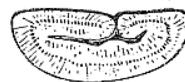
Coffee. Berry  
(mag.).



Coffee. Seed  
(mag.).  
Dorsal face.



Coffee. Seed  
(mag.).  
Ventral face.



Coffee. Transverse  
section of the seed  
(mag.).



Coffee. Seed.  
Dorsal face cut to show  
the minute embryo at  
the base of the albumen  
(mag.).



***Galium aparine***





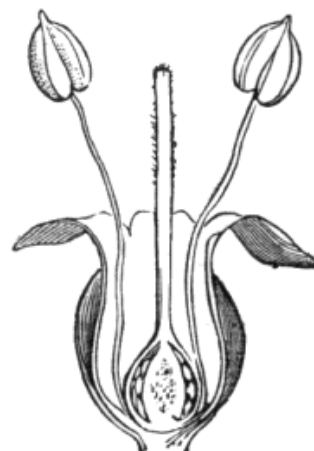
**Porodica**  
**PLANTAGINACEAE**



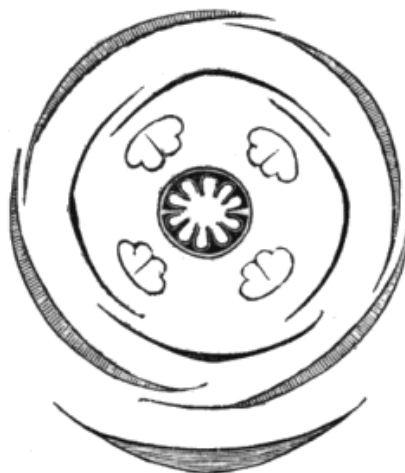
Plantain. (*Plantago major*.)  
Young plant.



Plantain.  
Flower (mag.).



Plantain.  
Flower cut vertically (mag.).



Plantain. Diagram.



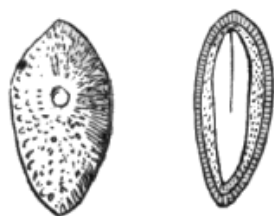
Plantain.  
Transverse section of ovary  
(mag.).



Plantain.  
Pistil  
(mag.).



Plantain.  
Spike.



Plantain.  
Seed, entire and cut vertically  
(mag.).

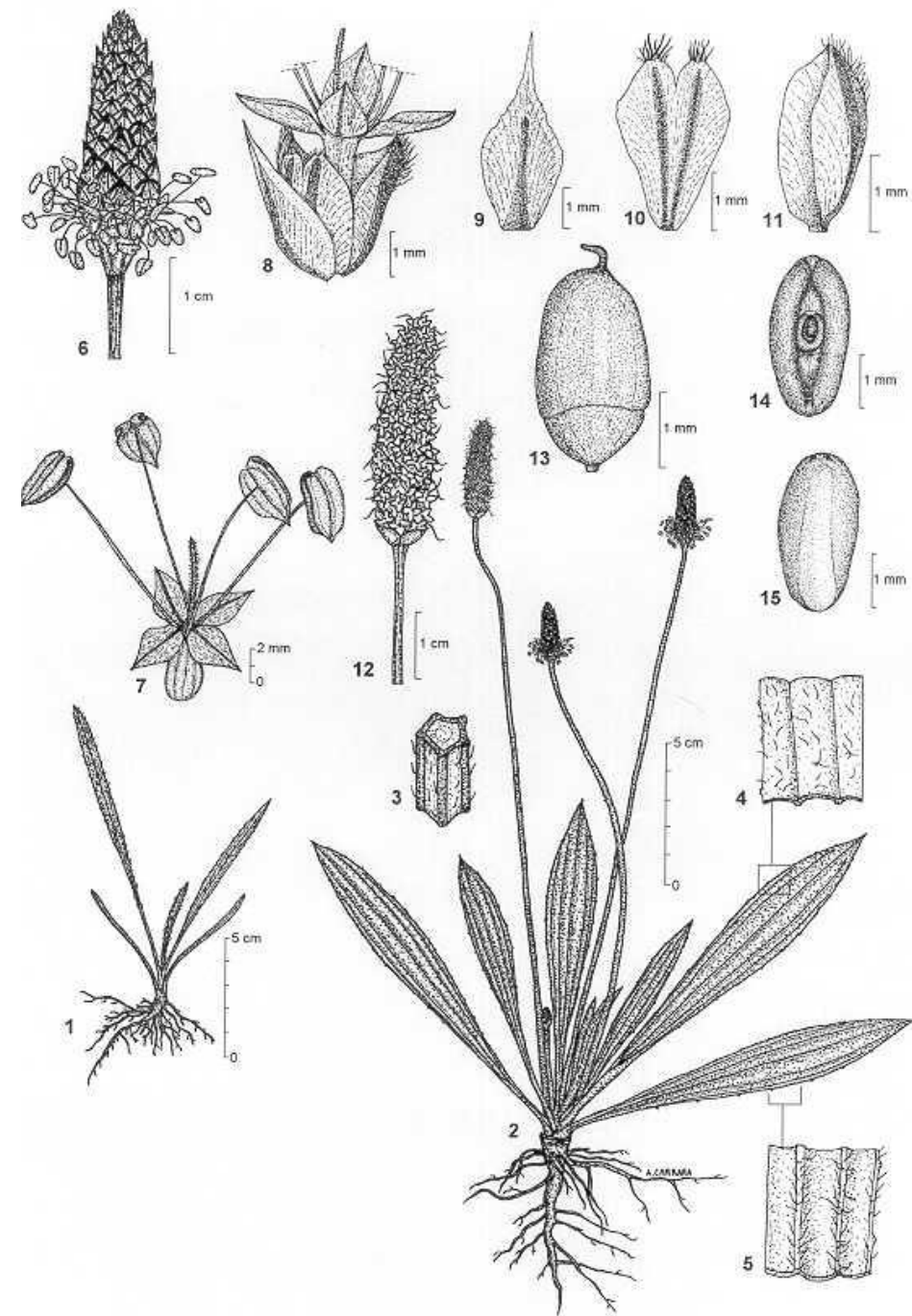


Plantain.  
Fruit closed  
(mag.).



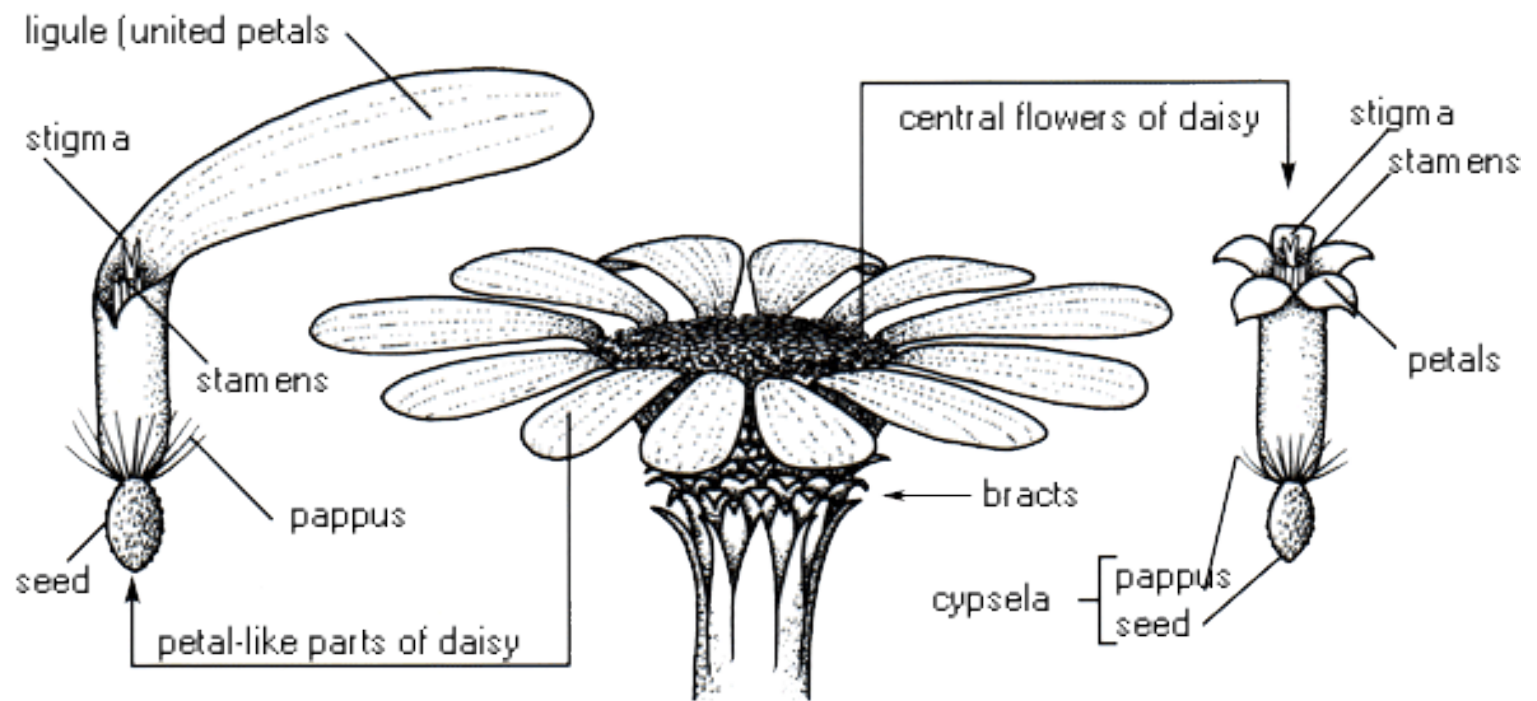
Plantain.  
Fruit dehiscing  
(mag.).



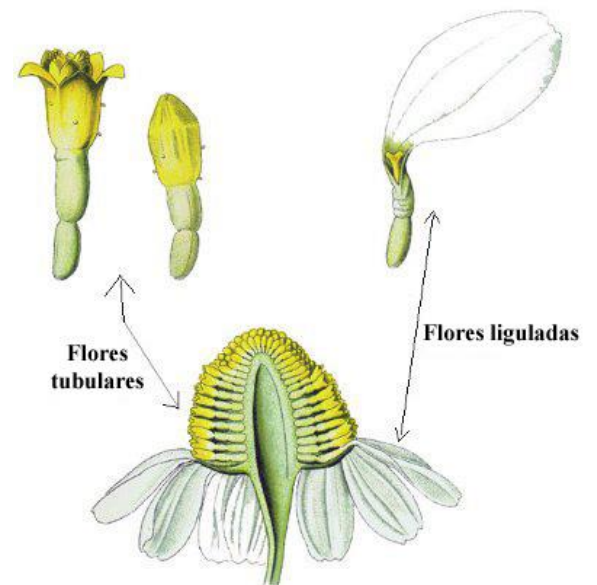
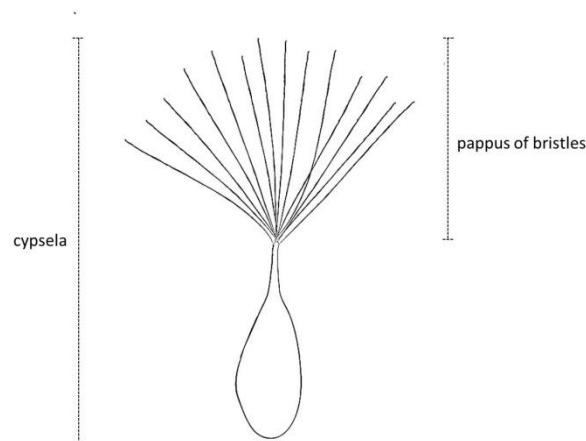


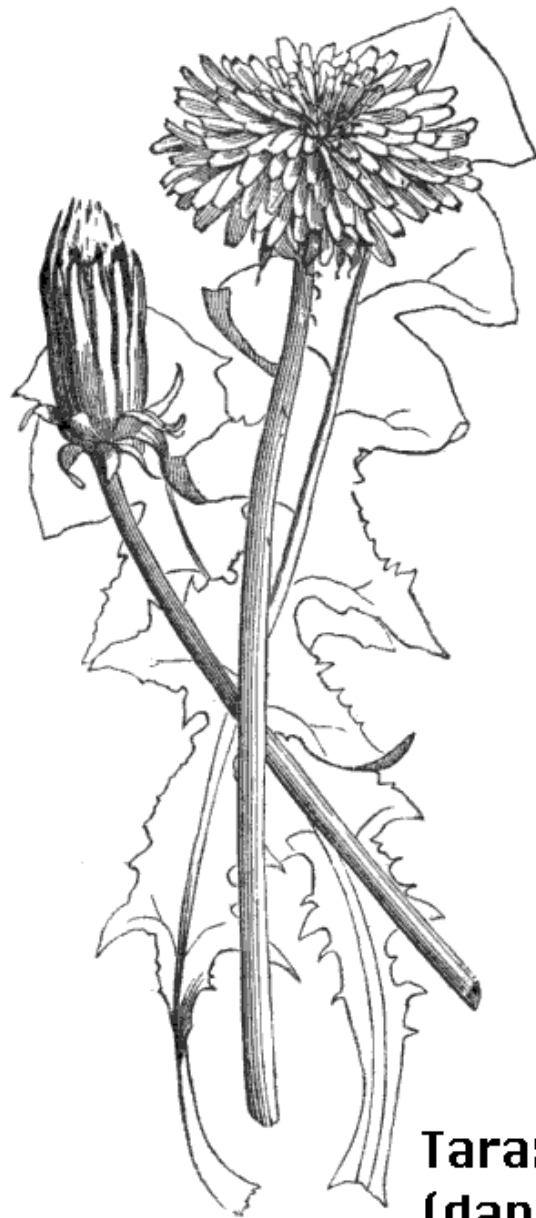


**Porodica**  
**ASTERACEAE**



A daisy flower (Asteraceae) — a composite head of many small flowers





**Ligulate floret**

**Taraxacum  
(dandelion)**



**Receptacle  
and fruits**



**Pappus**

**Fruit**







**Porodica**  
**ARACEAE**

Feuilles sagittées souvent tachetées

Atlas des Plantes de France,  
A. Masclef 1891

Spathe

Spadice en massue

Baies rouges très toxiques

Tige épaisse en tubercule



**Porodica**  
**ALLIACEAE**

# HARDNECK GARLIC

