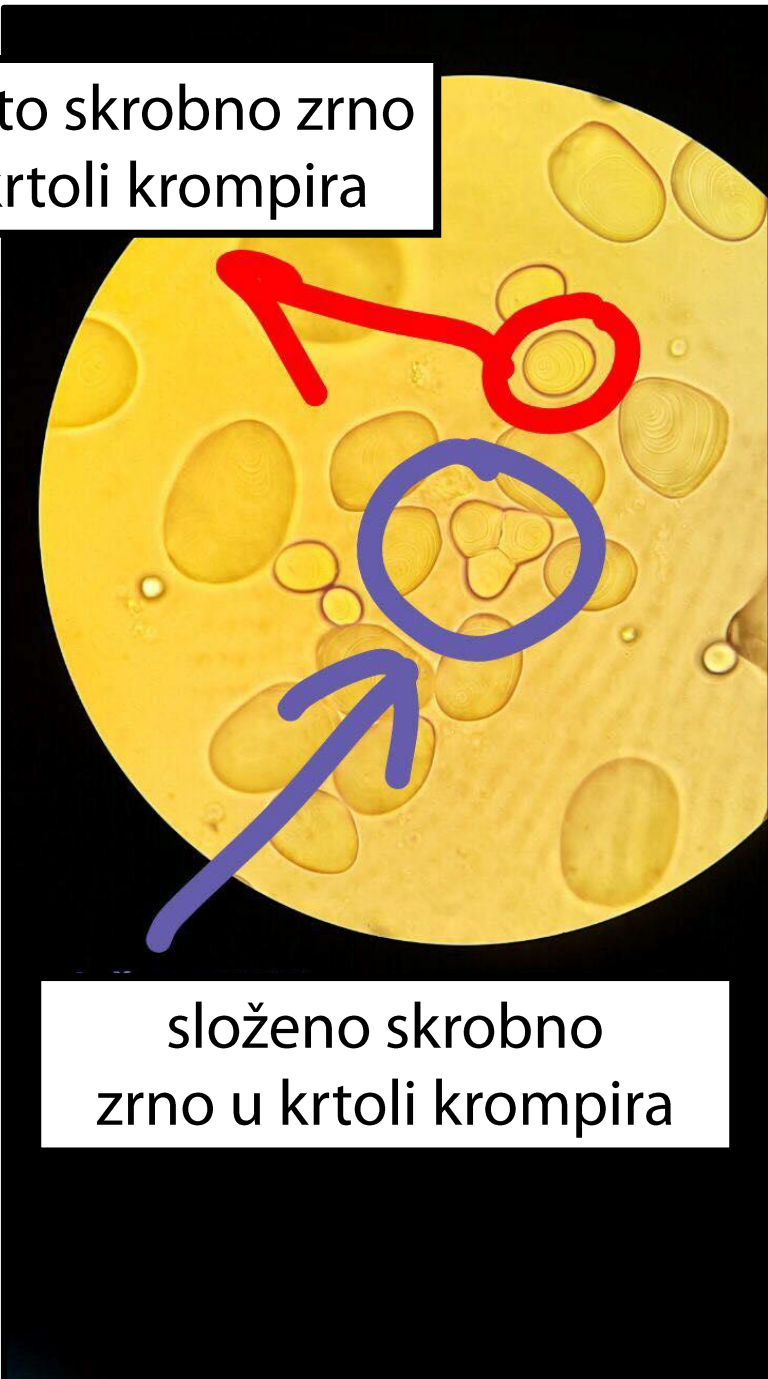


ćelije pokožice crnog luka



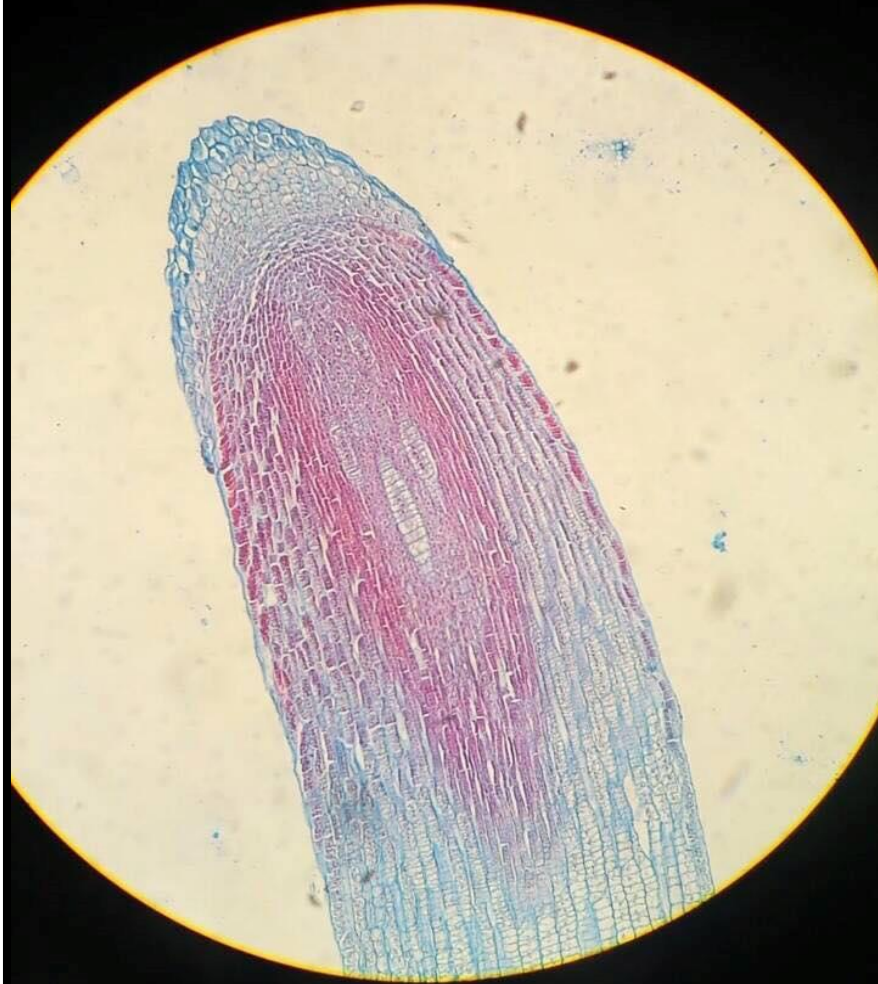
polusloženo skrobno zрно u krtoli krompira

prosto skrobno zрно u krtoli krompira



složeno skrobno zрно u krtoli krompira

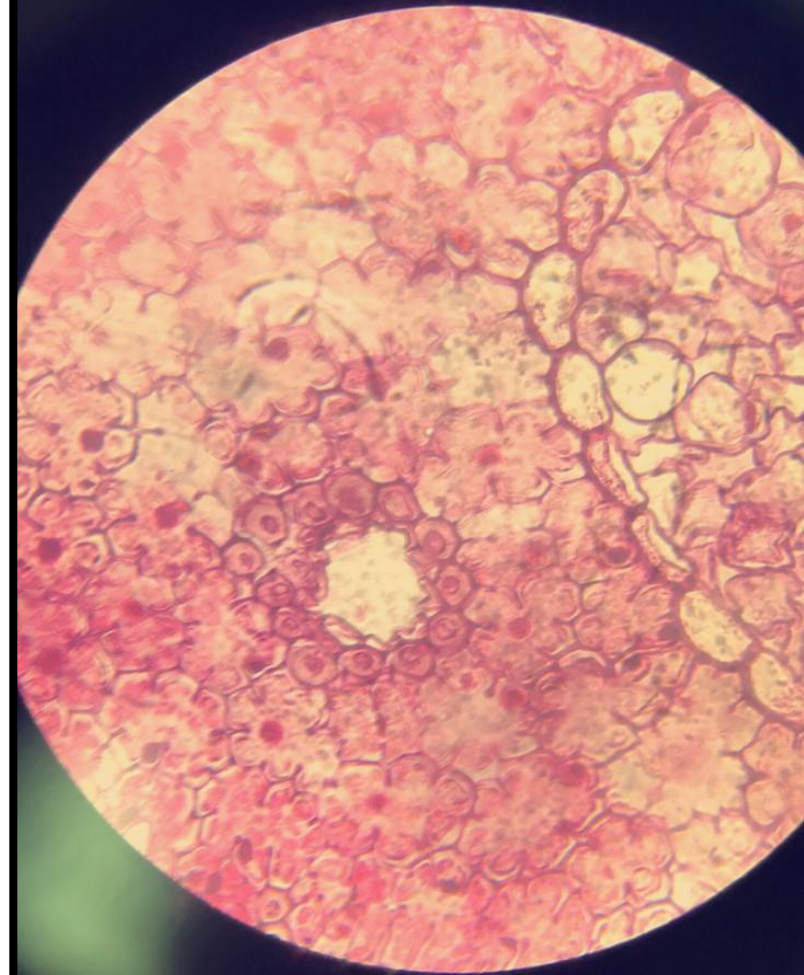
vegetaciona kupa korijena

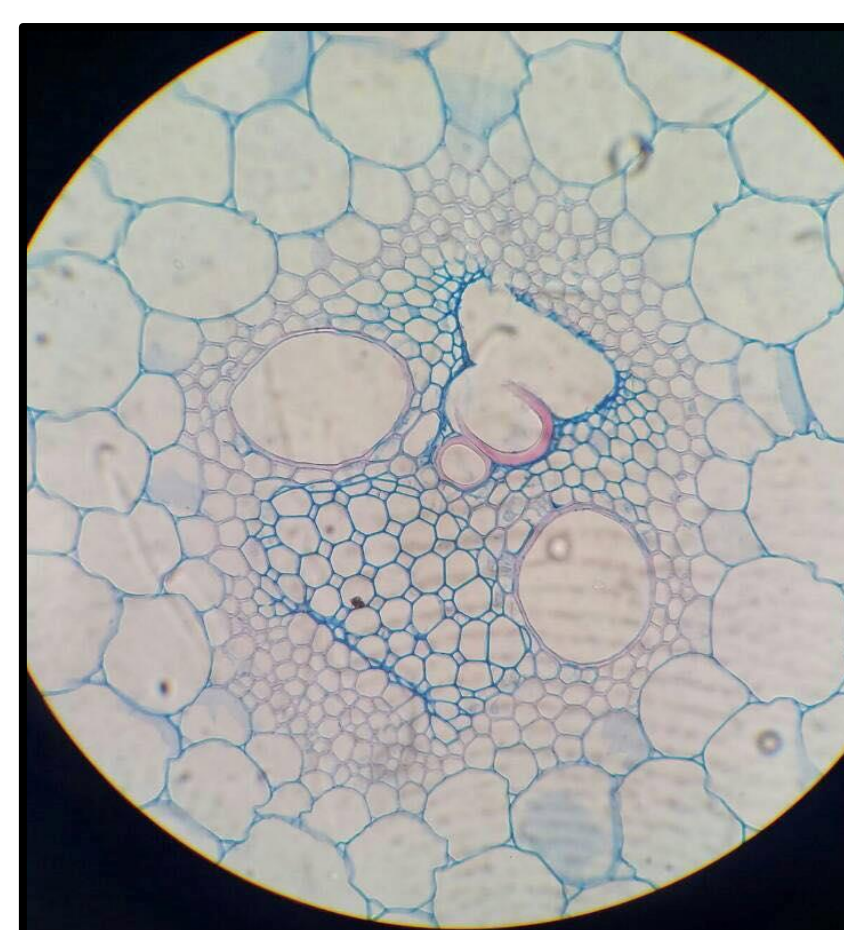


vegetaciona kupa izdanka

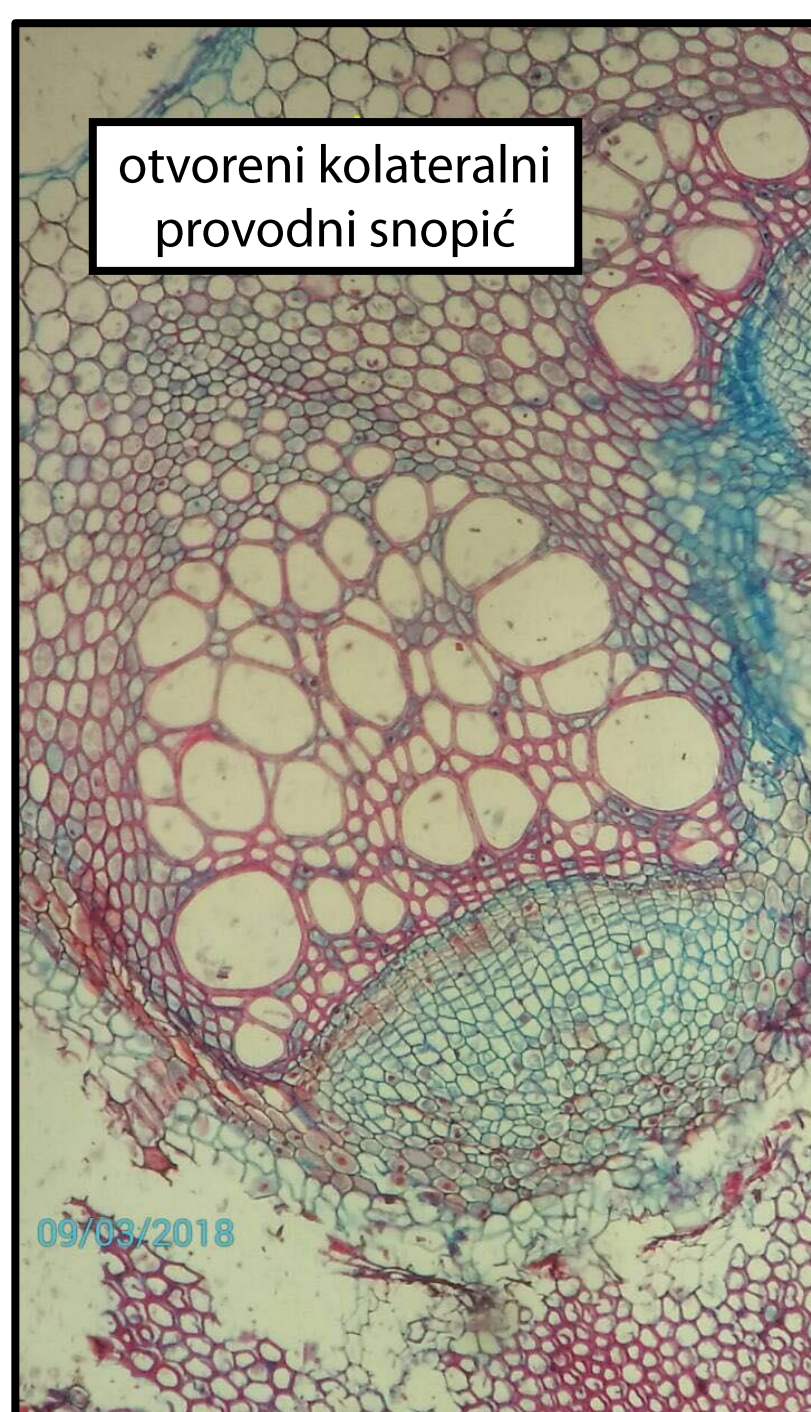


smolni kanali u iglici bora

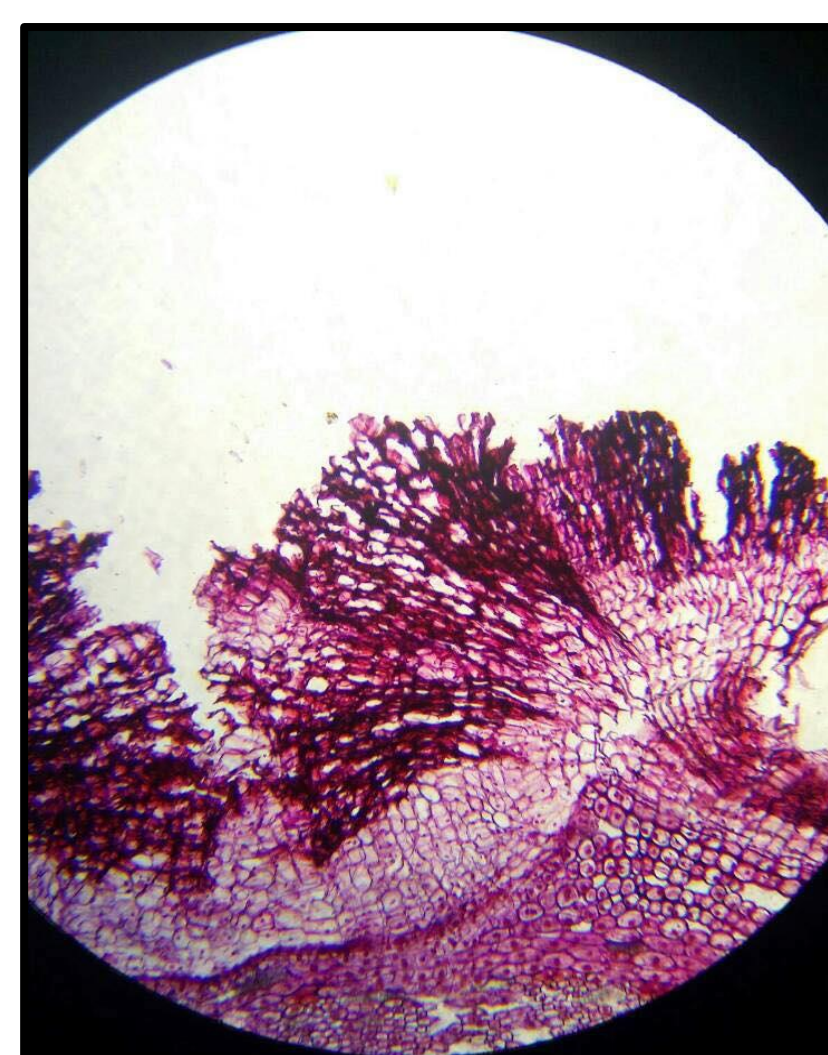




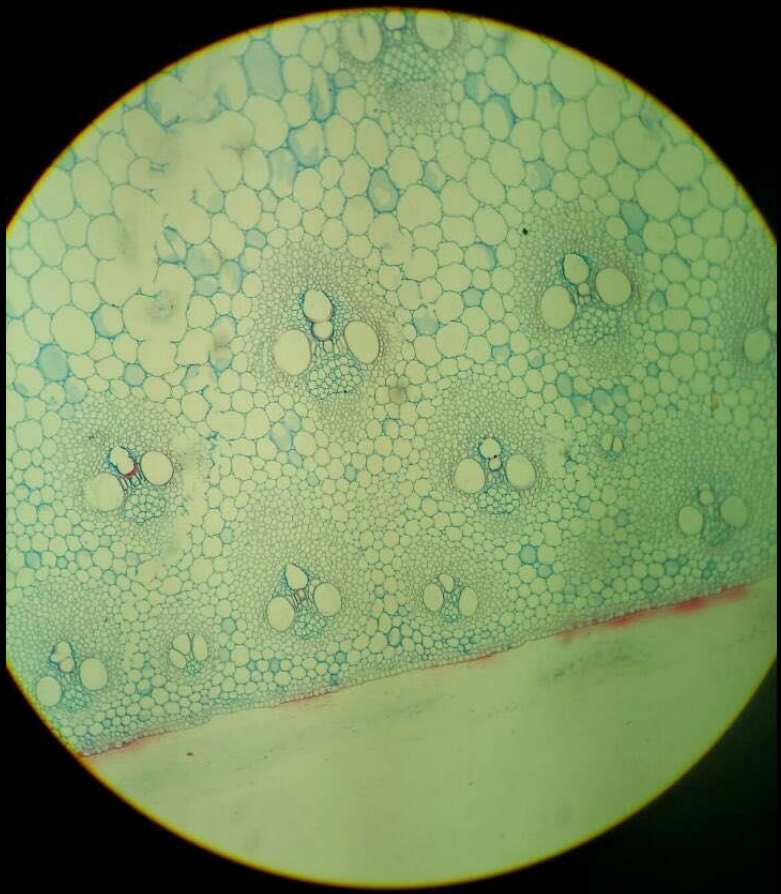
zatvoreni
kolateralni provodni
snopić



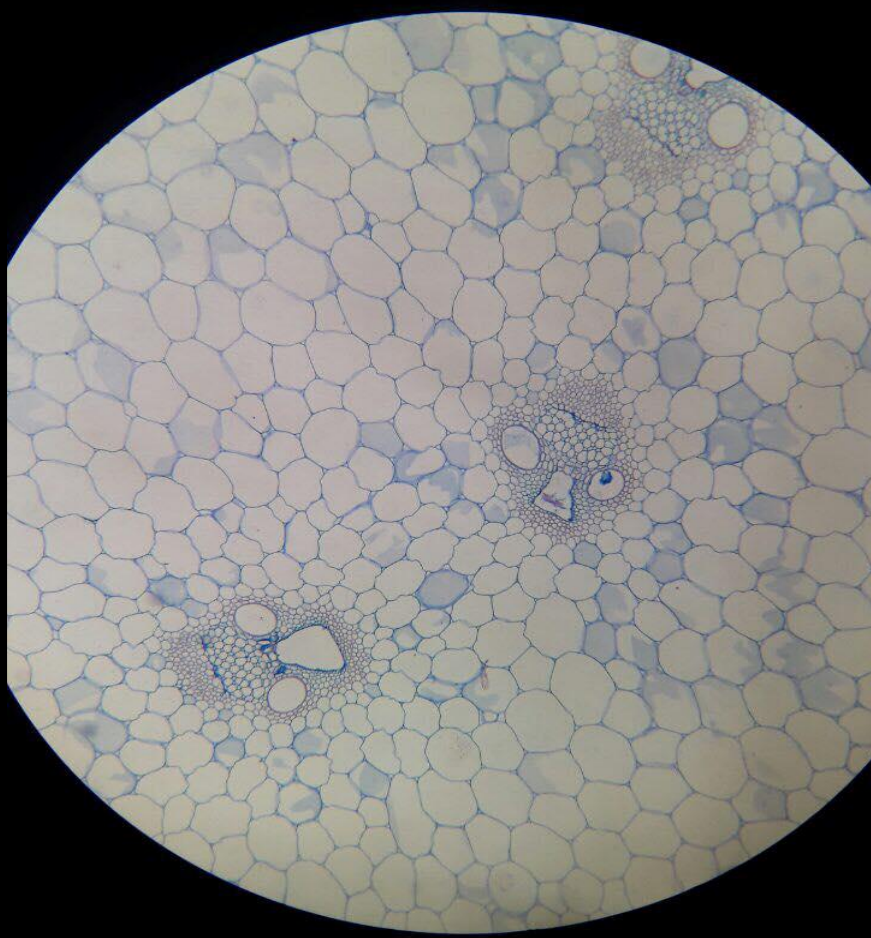
otvoreni kolateralni
provodni snopić



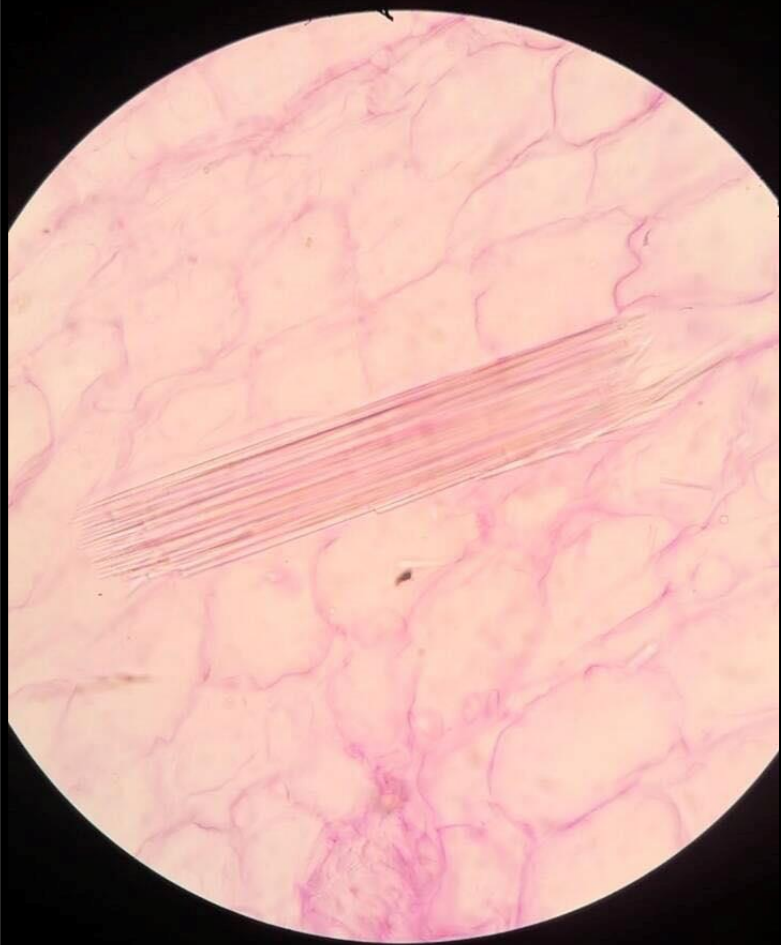
presjek kroz lenticelu



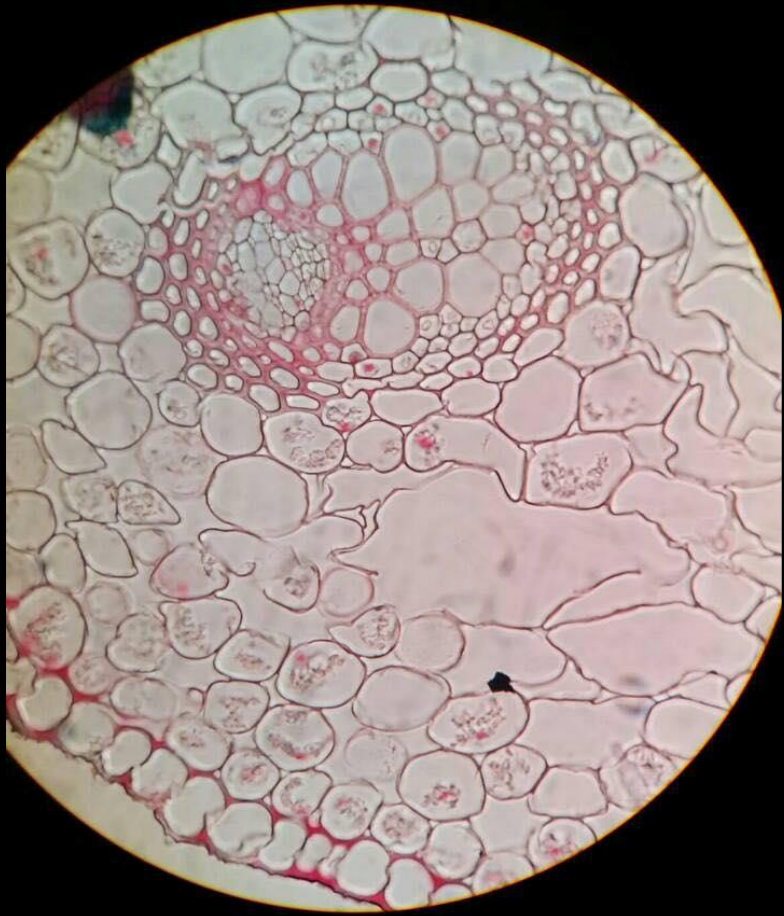
primarna građa stabla
monokotiledonih biljaka



primarna građa stabla
monokotiledonih biljaka i
zatvoreni kolateralni
provodni snopići

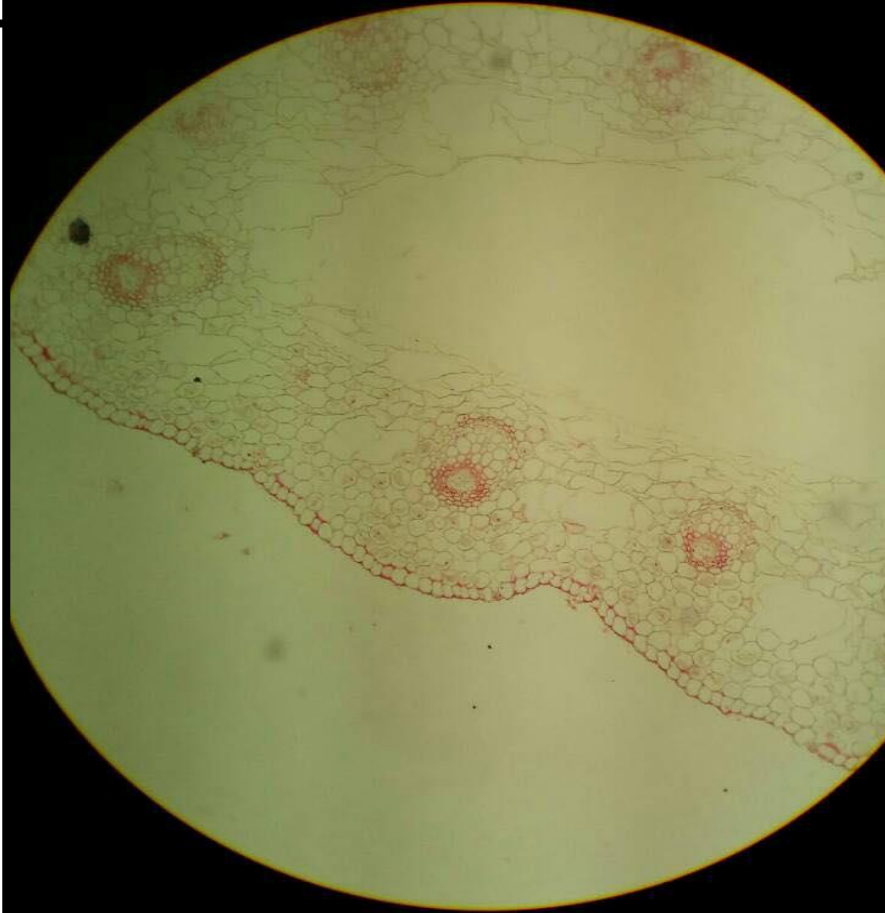


rafidi (kristali Ca-oksalata)



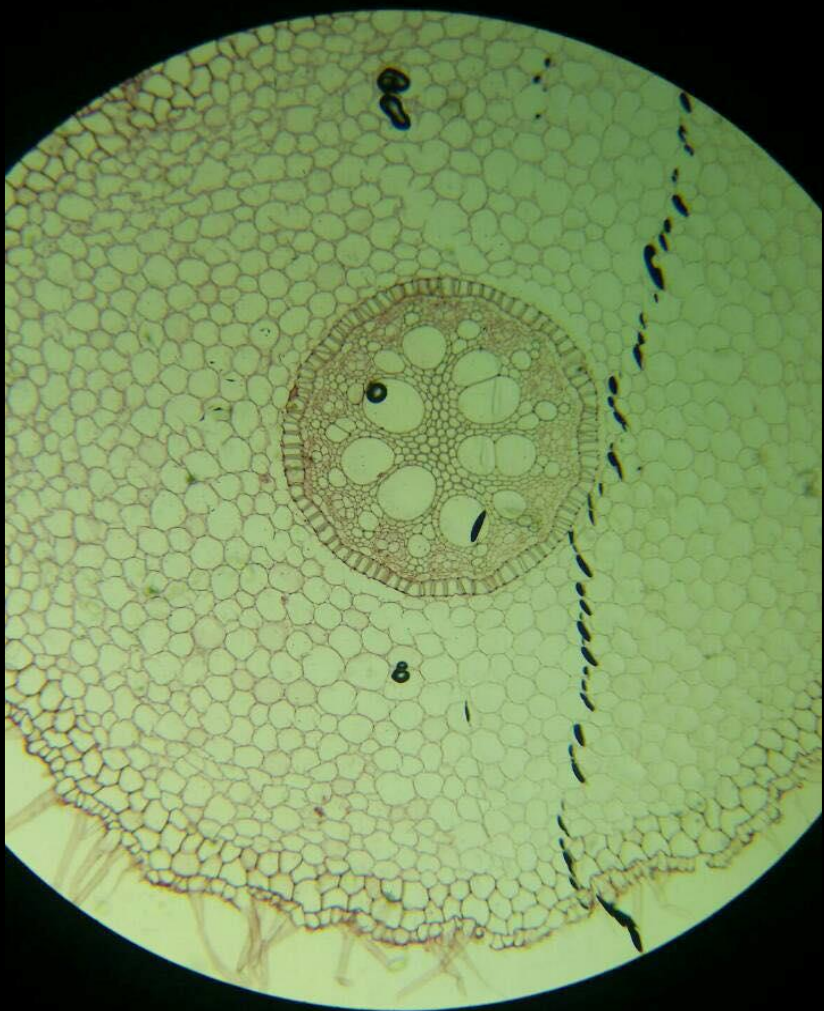
primarna kora i
provodni snopić u
stablu ljutića

primarna građa stabla
dikotiledonih biljaka

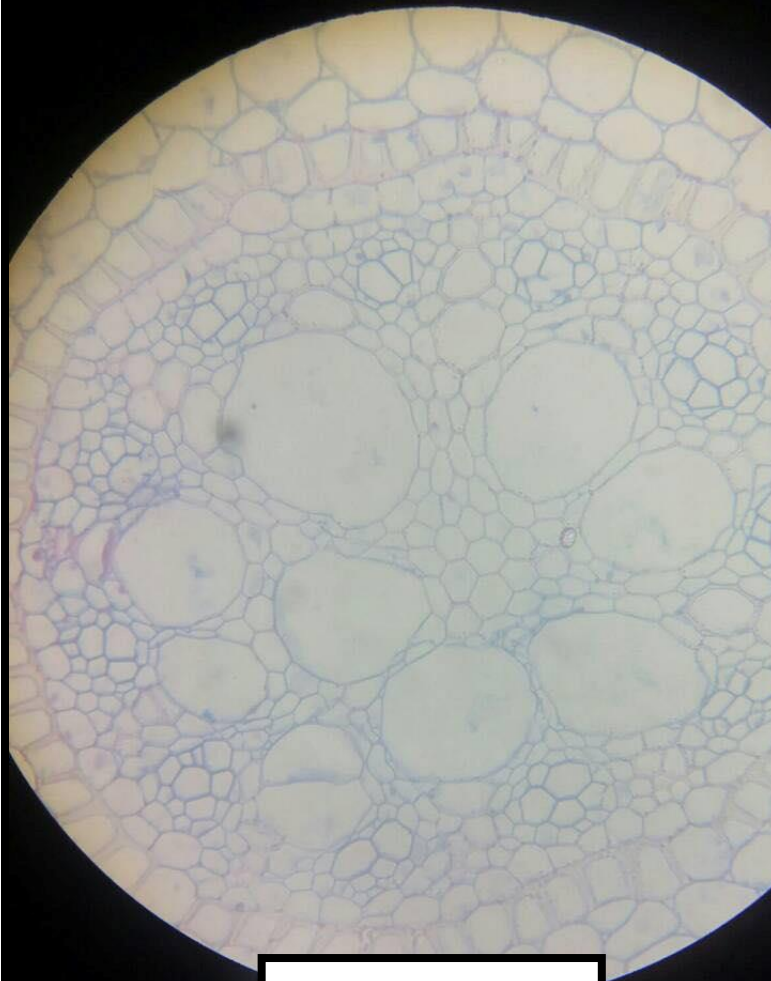


otvoreni kolateralni
provodni snopić

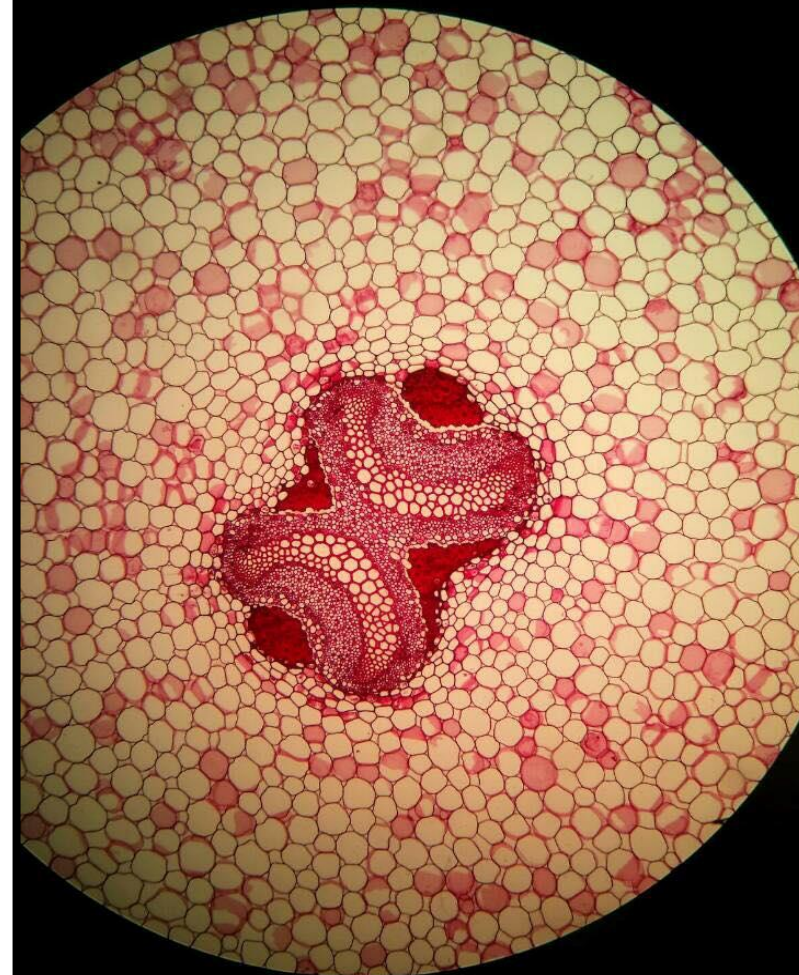
primarna građa
korijena perunike

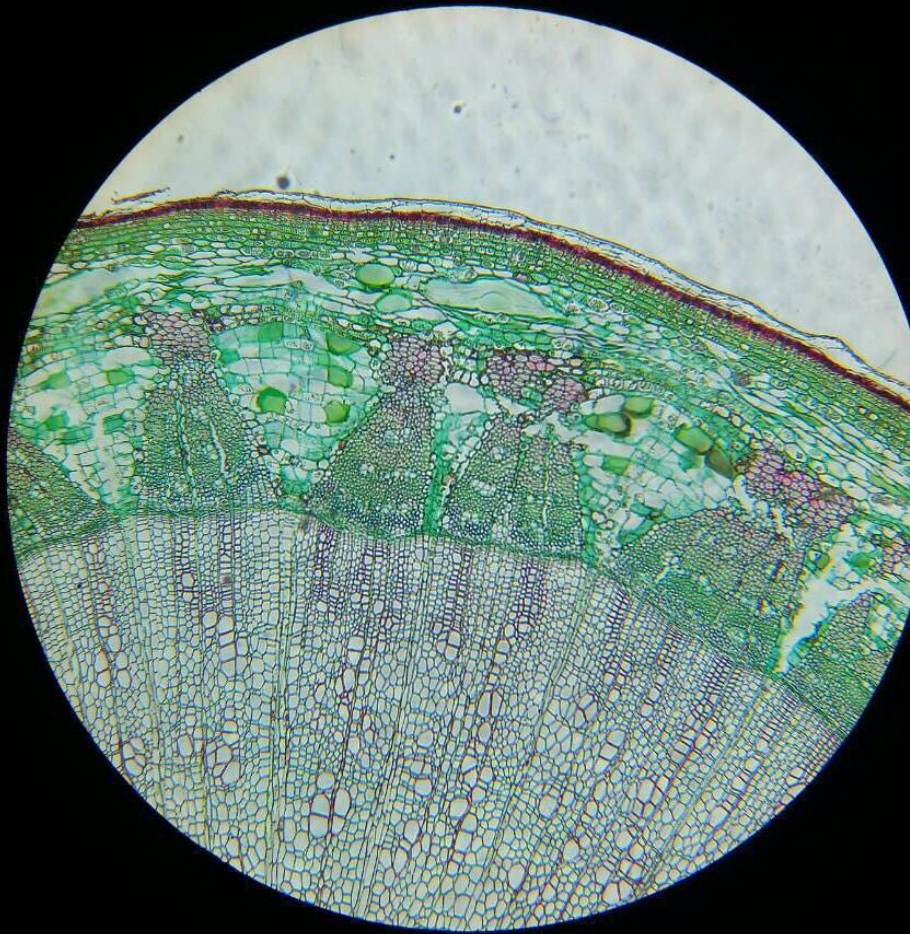


radijalni
provodni
snopić

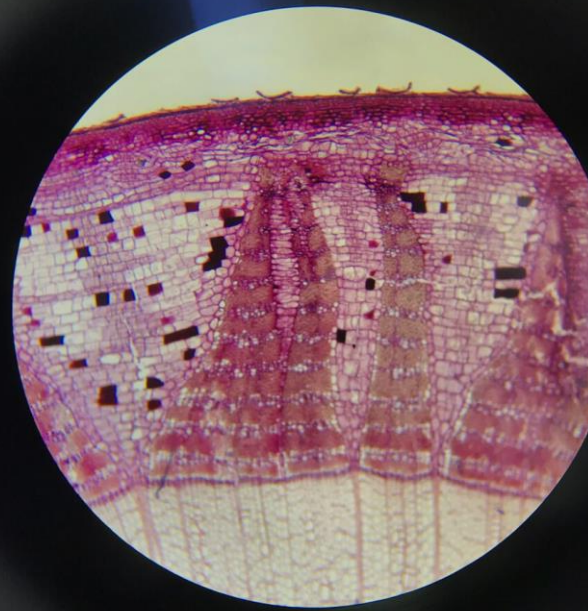


amfikribralni
provodni snopić

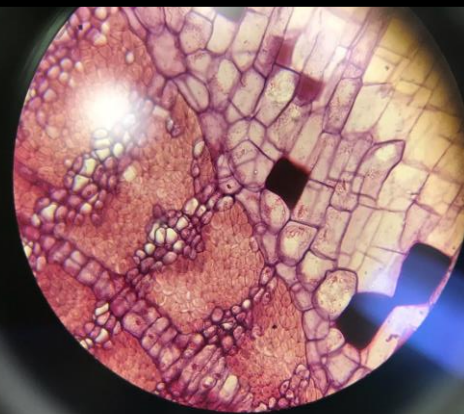




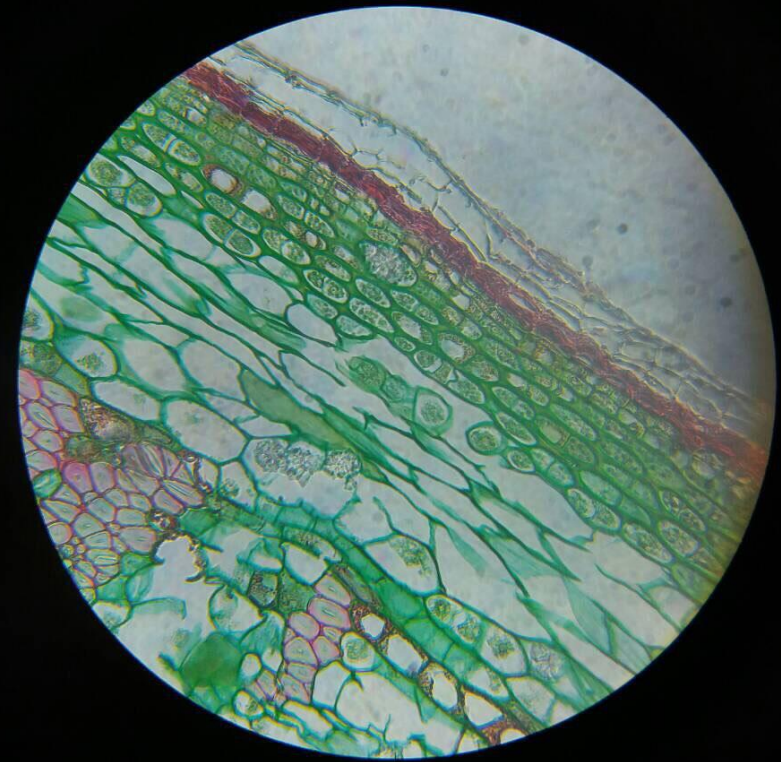
sekundarna građa stabla

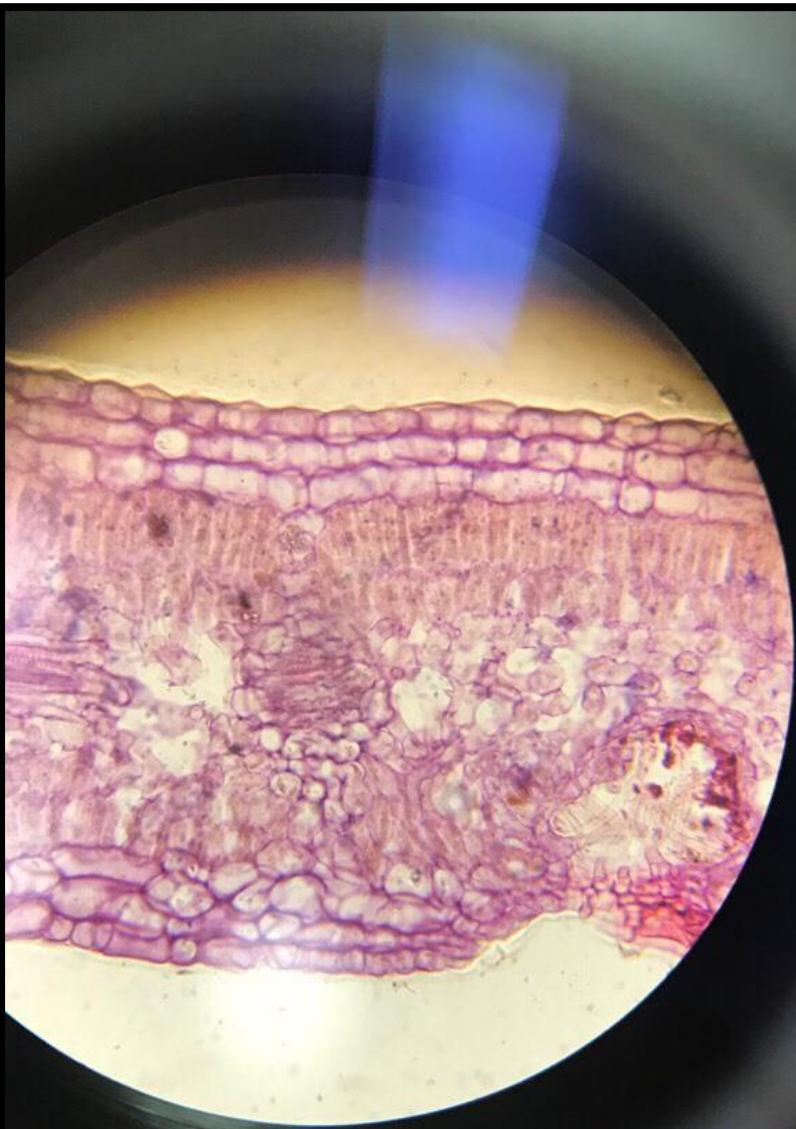


peridermis, primarna
i sekundarna kora



primarna kora





anatomska građa lista sušnih staništa



druze (kristali Ca-oksalata)



anatomska građa lista
umjerenih staništa