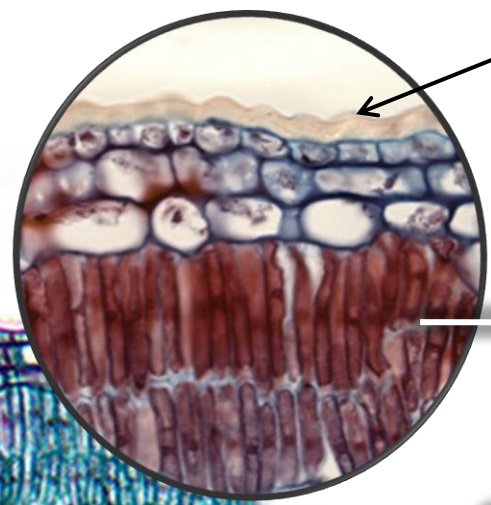
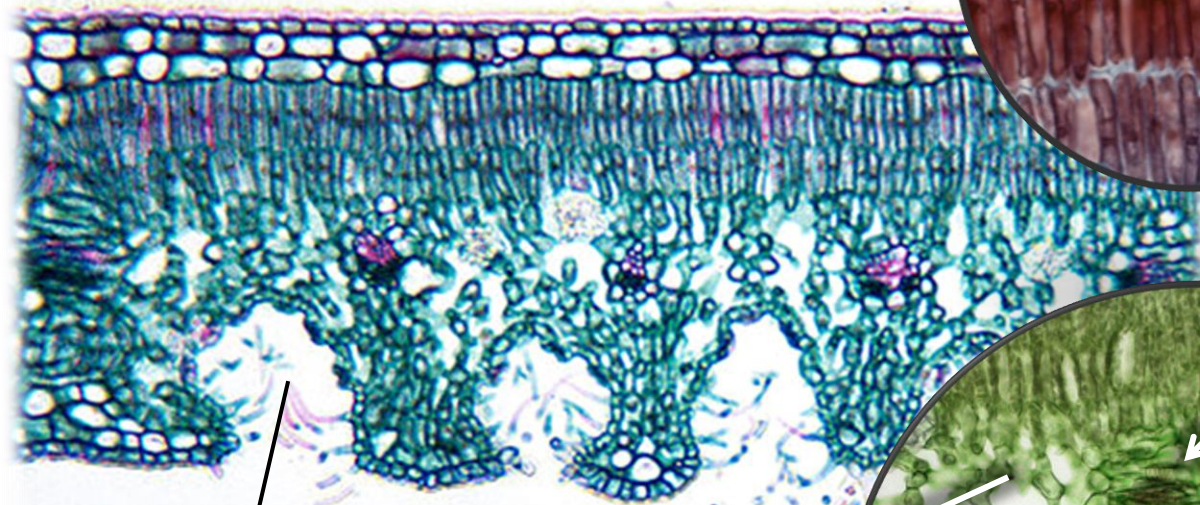


* mezofil lista

PRESJEK KROZ LIST BILJAKA
UMJERENIH STANIŠTA

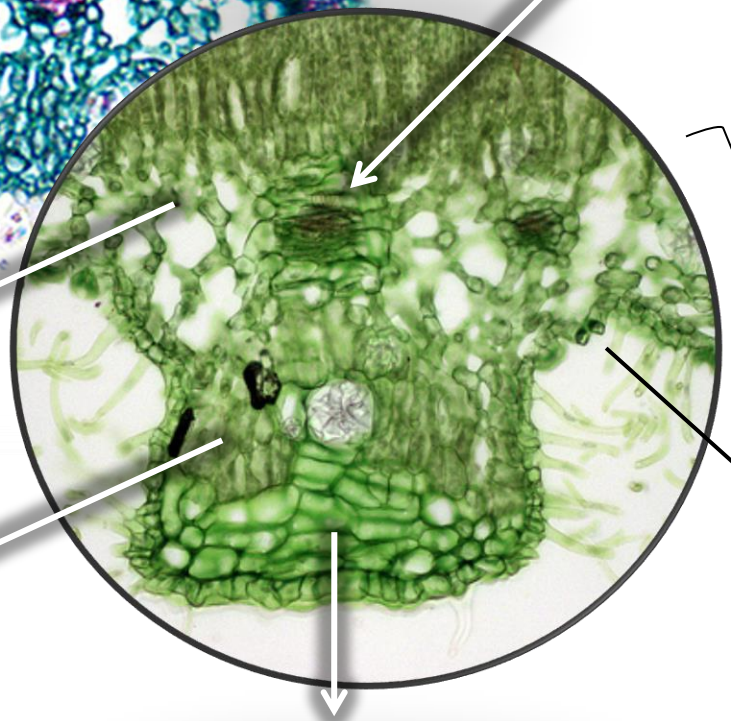
PRESJEK KROZ LIST BILJAKA
SUŠNIH STANIŠTA



kutikula
epidermis lica

palisadno tkivo *

provodni
snopić



sunderasto
tkivo *

stoma

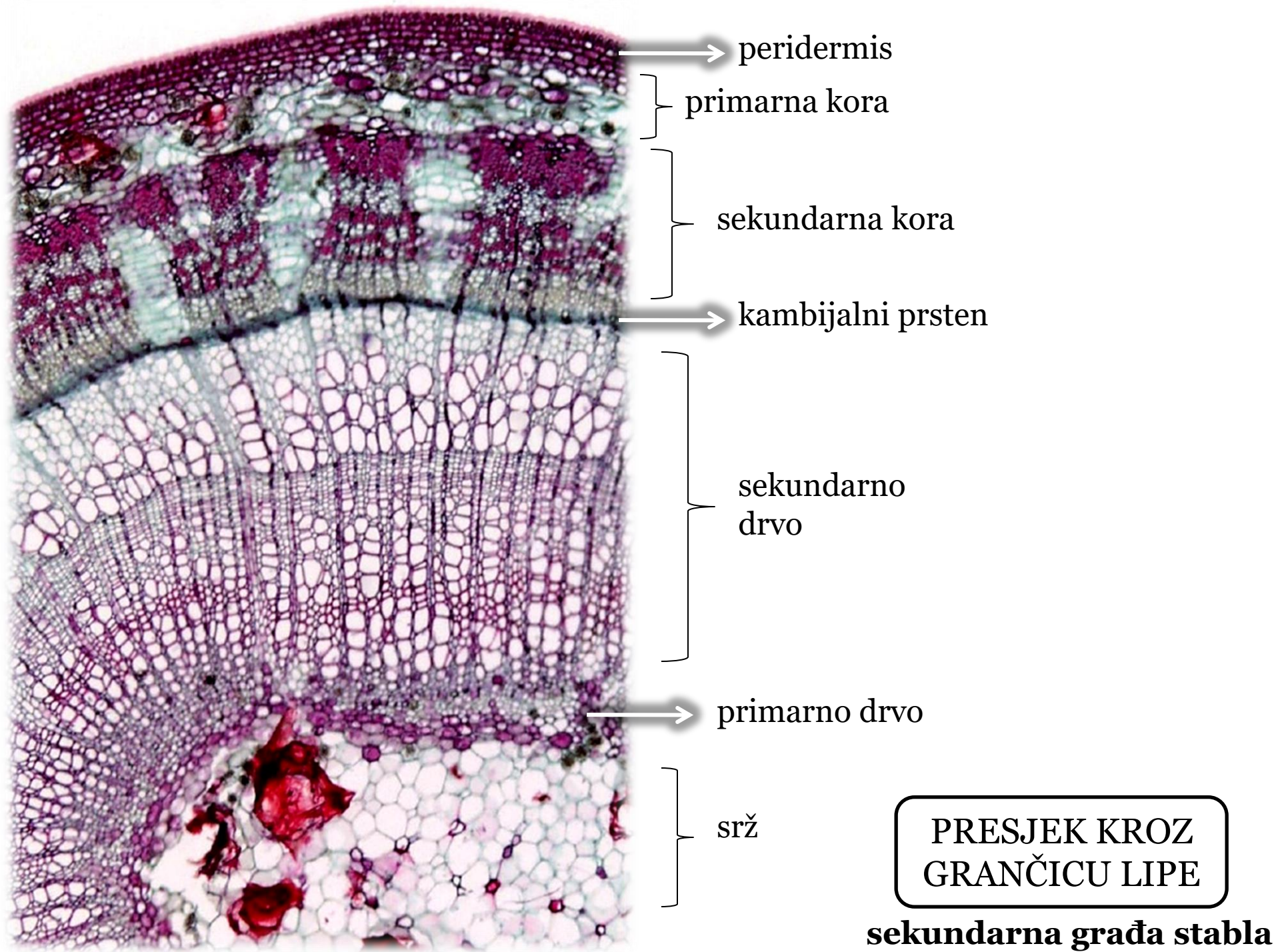
duplja sa
stomama

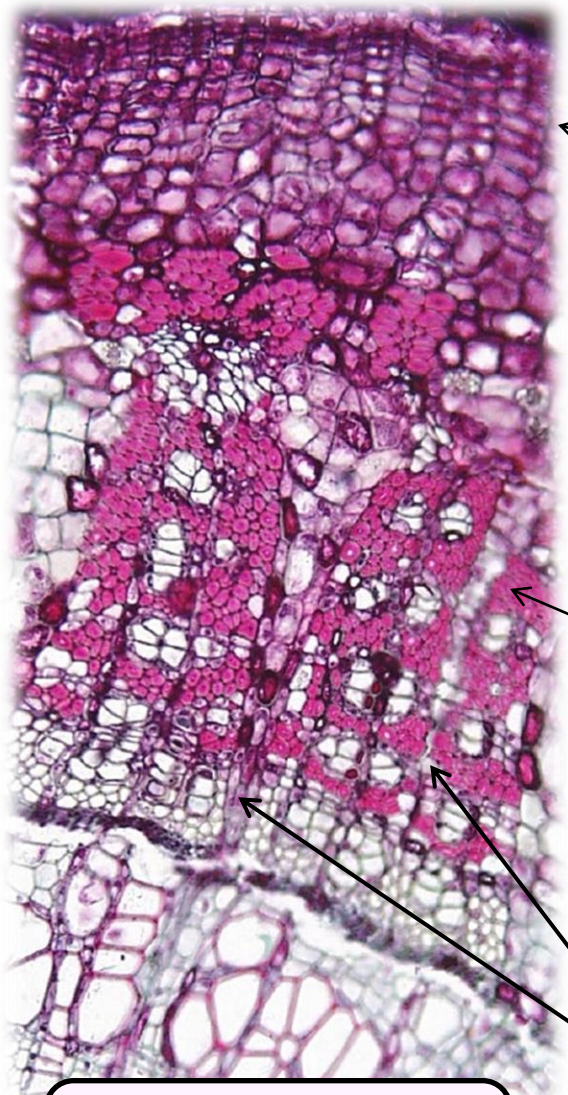
ćelija
sabiračica

palisadno
tkivo *

epidermis
naličja

* **mezofil lista**





**SEKUNDARNA
GRAĐA STABLA**

**peridermis,
primarna i sekundarna kora**

ostaci epidermisa

peridermis

kolenhim

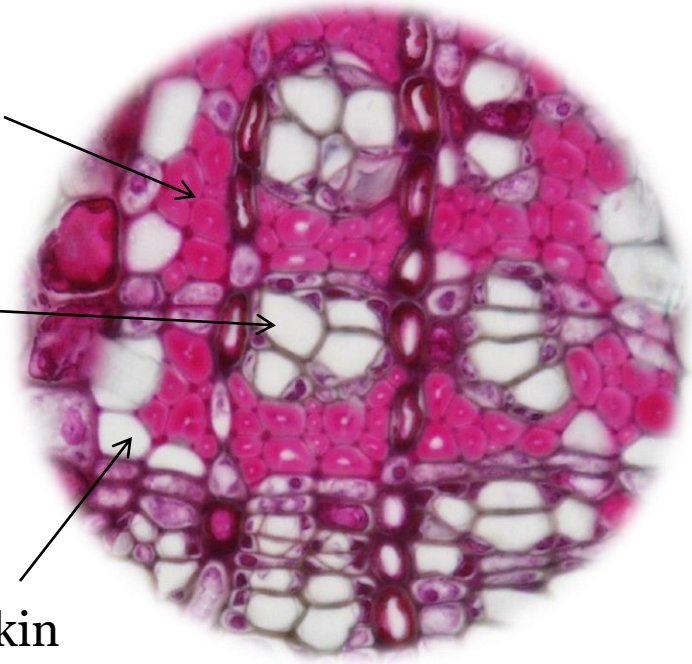
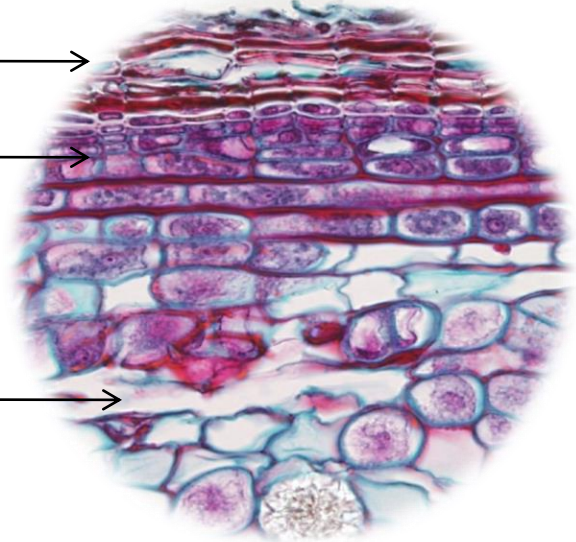
parenhim
primarne kore

likina vlakna

sekundarni
floem

korini
zraci

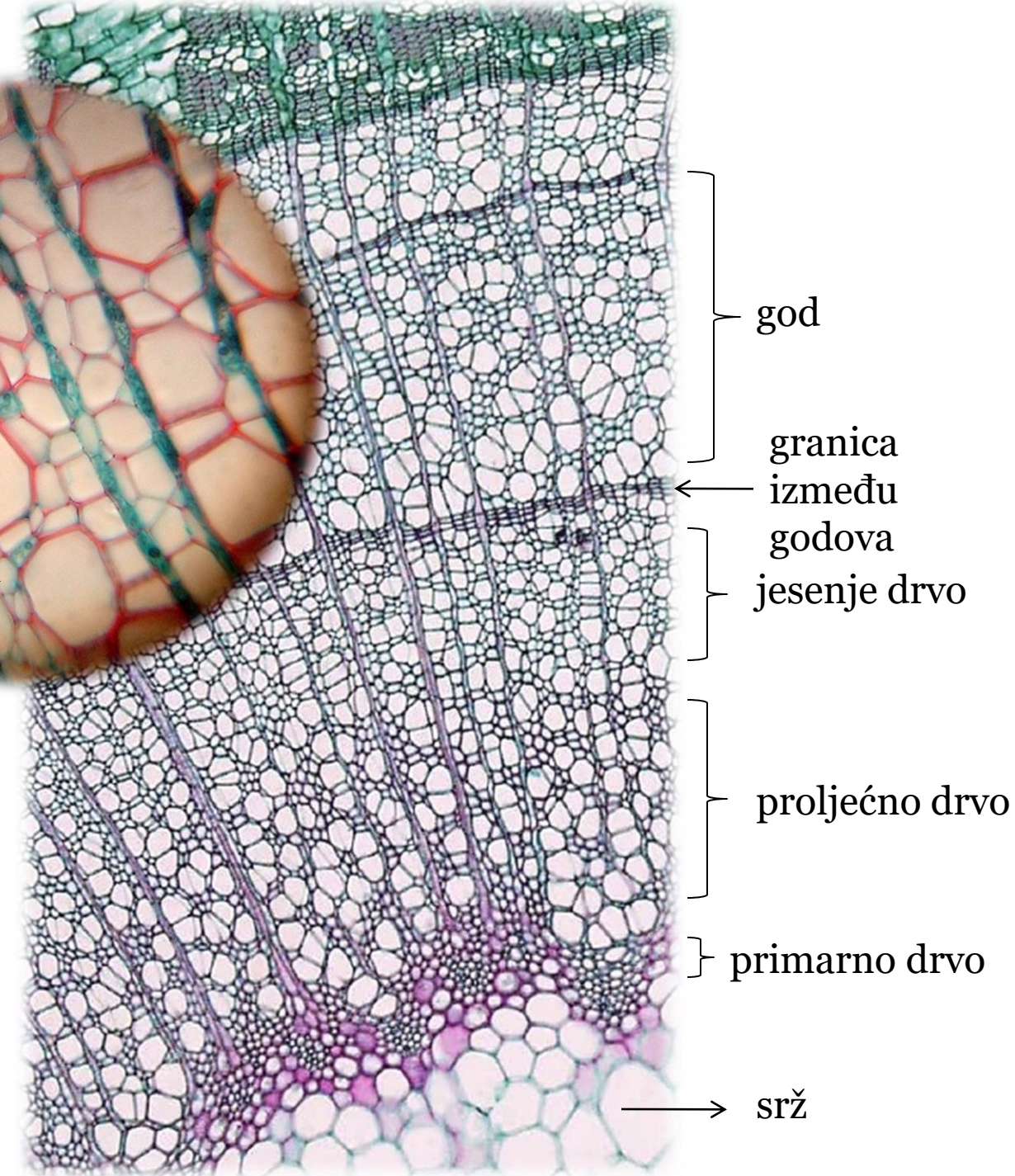
likin
parenhim



traheje
drveni parenhim
drveni zrak
traheidi

**SEKUNDARNA
GRAĐA STABLA**

**srž, primarno i
sekundarno drvo**



god
granica između godova
jesenje drvo
prolječno drvo
primarno drvo

srž