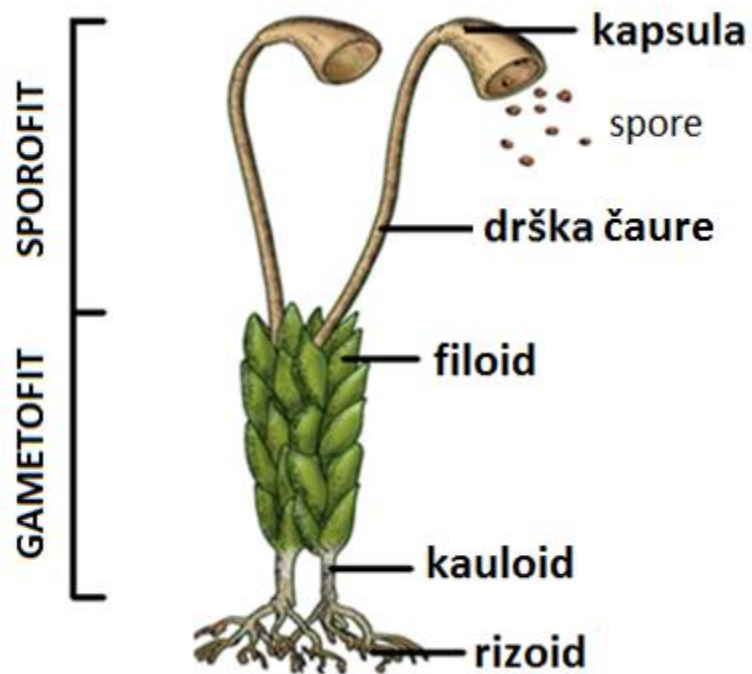
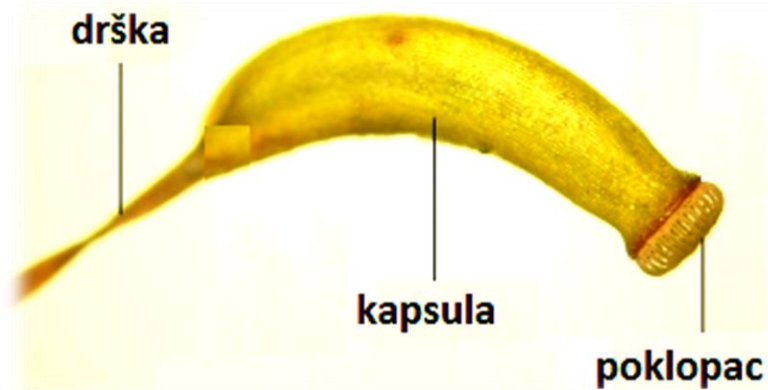
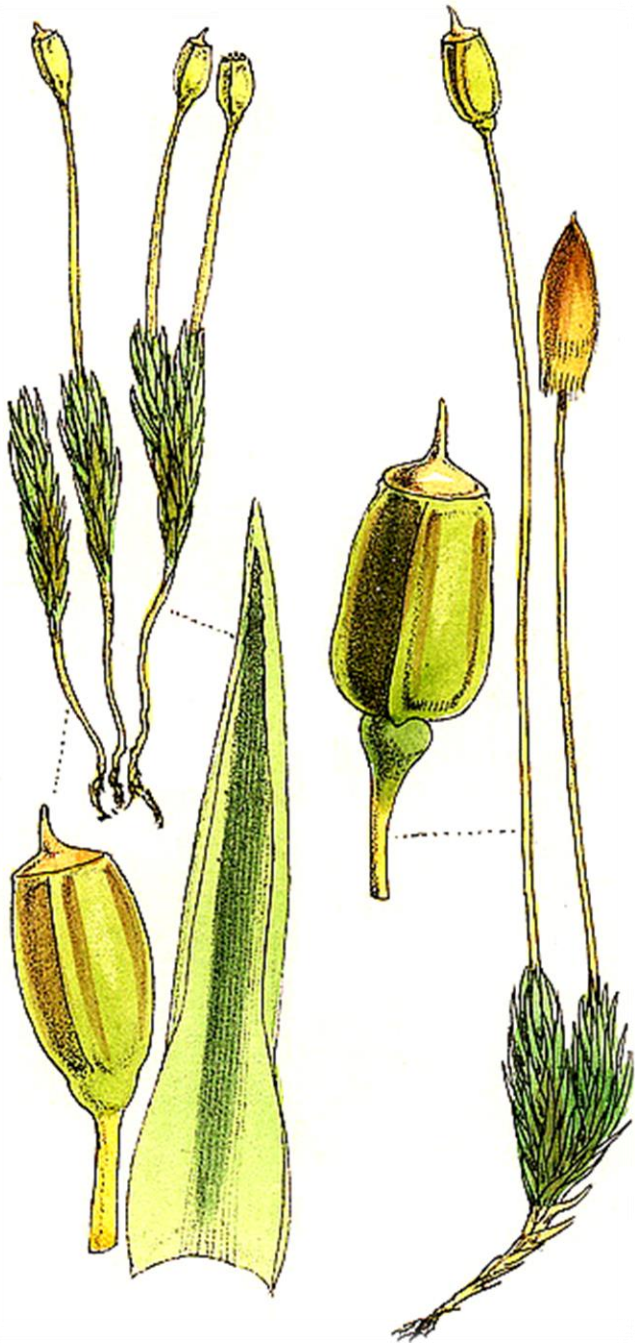


Divisio: ***BRYOPHYTA***

- MAHOVINE -







Divisio: *Bryophyta*
Classis: *Bryopsida*
Ordo: *Bryales*
Fam.: *Polytrichaceae*
Polytrichum sp.

fam. *Polytrichaceae*



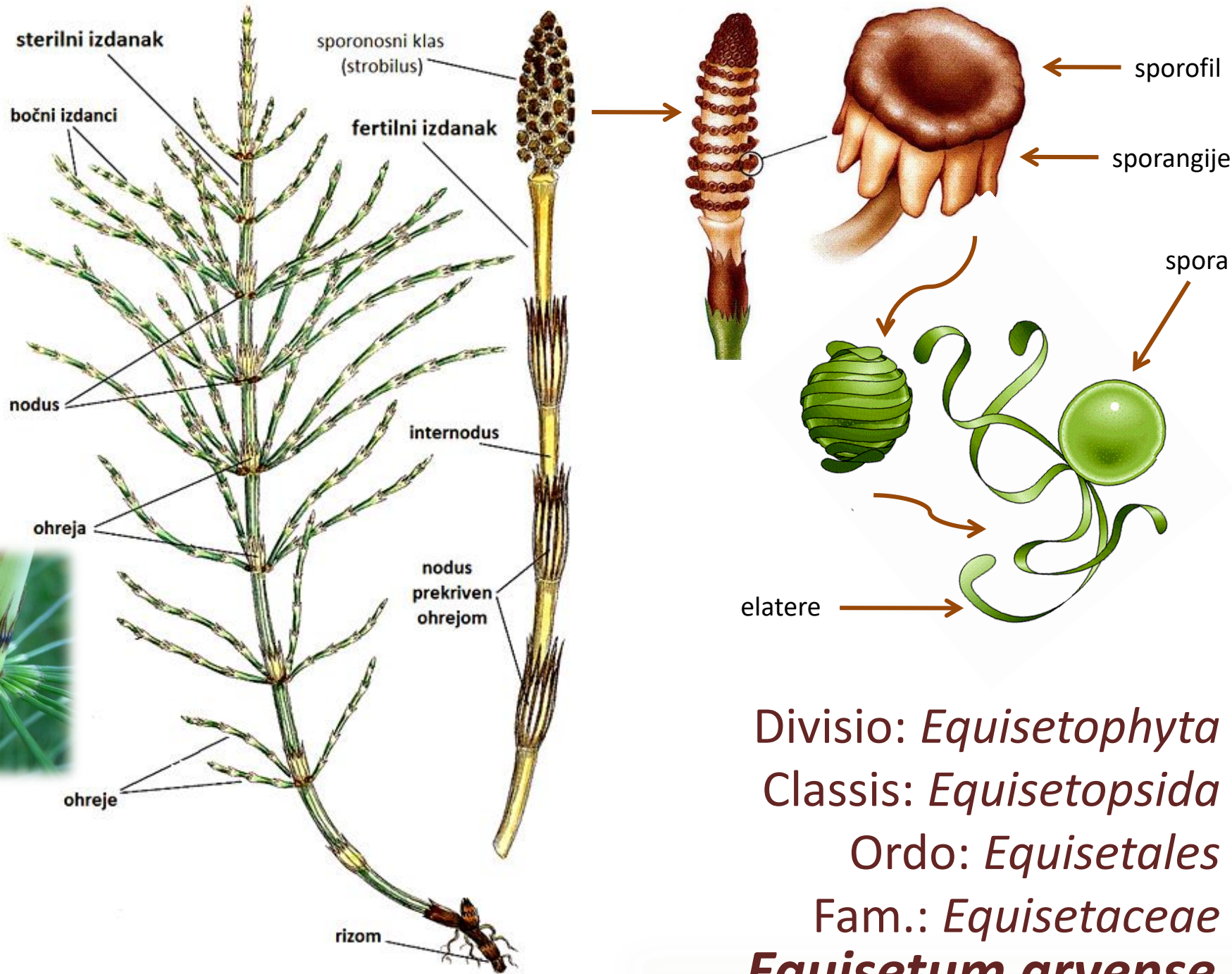
***Polytrichum commune* - busenjača**



Divisio: *EQUISETOPHYTA*

- RASTAVIĆI -





Divisio: *Equisetophyta*
 Classis: *Equisetopsida*
 Ordo: *Equisetales*
 Fam.: *Equisetaceae*
Equisetum arvense



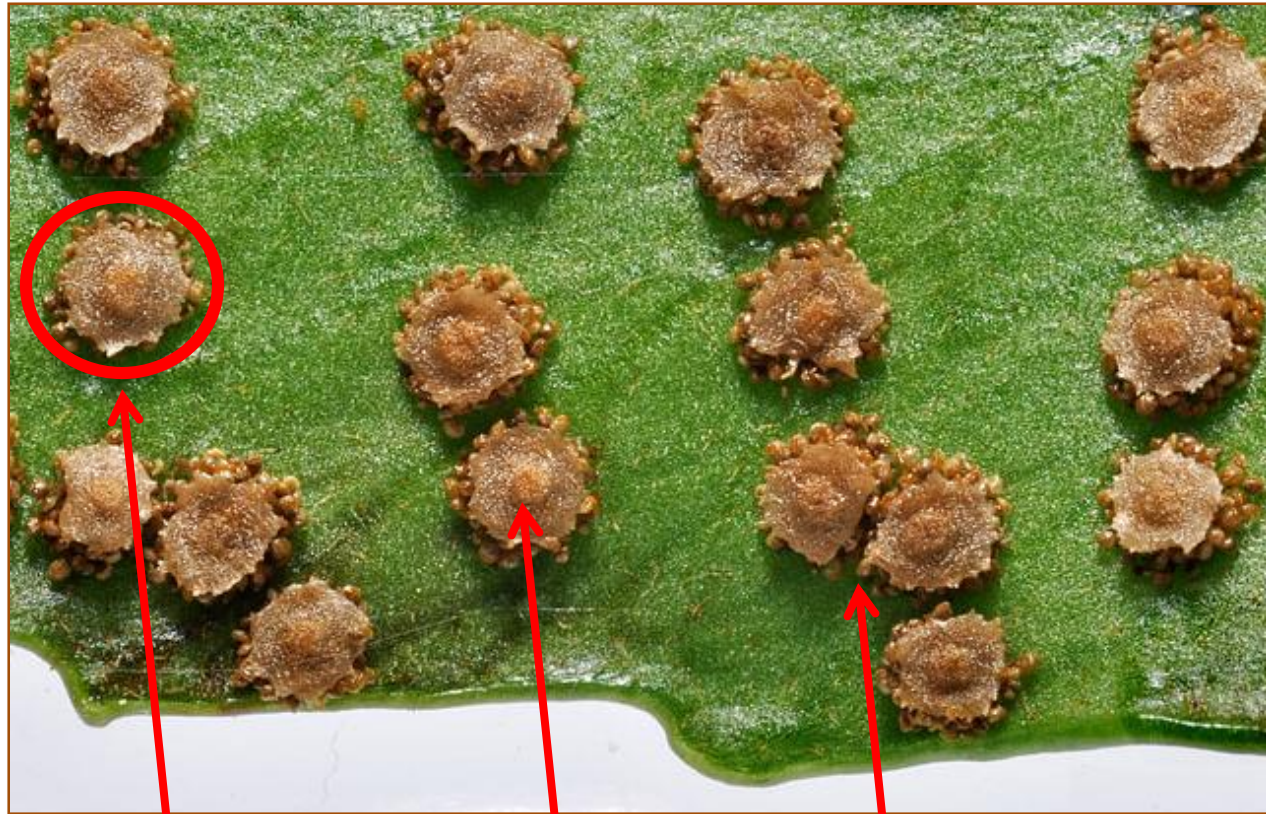


***Equisetum arvense* - preslica**

Divisio: ***POLYPODIOPHYTA***

- **PAPRATI** -

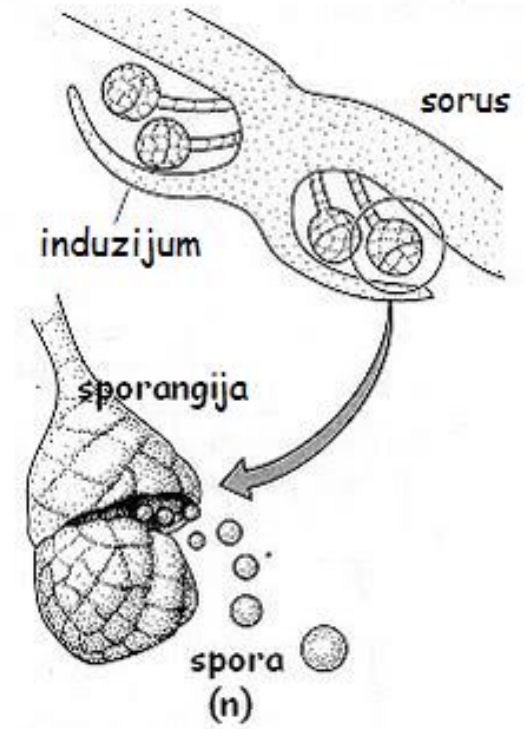




sorus

induzijum

sporangije





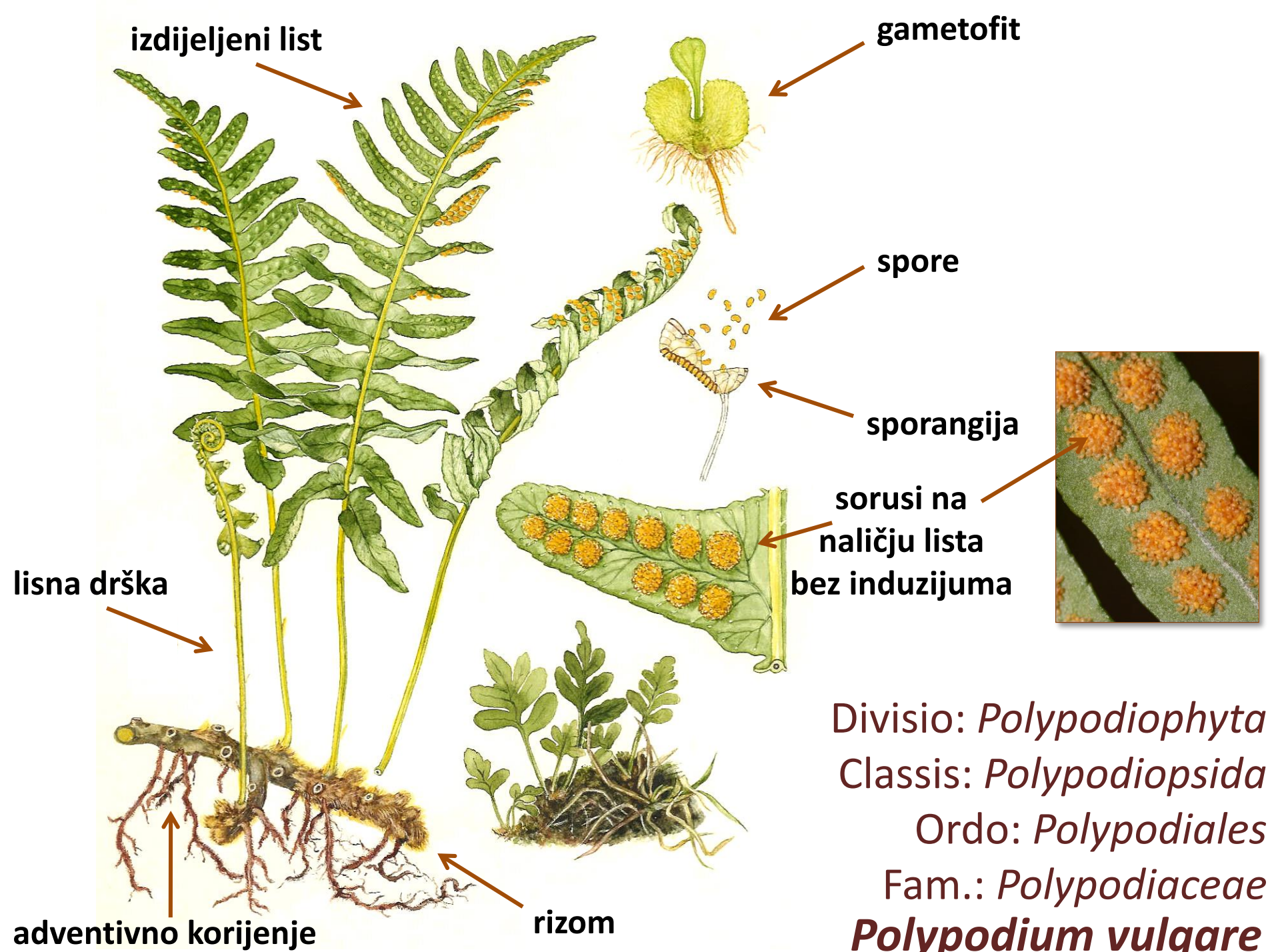
**sorusi bez
induzijuma**

**sorusi sa
induzijumom**





***Polypodium vulgare* – slatka paprat**





***Scolopendrium vulgare* – jelenji jezik**



cijeli listovi

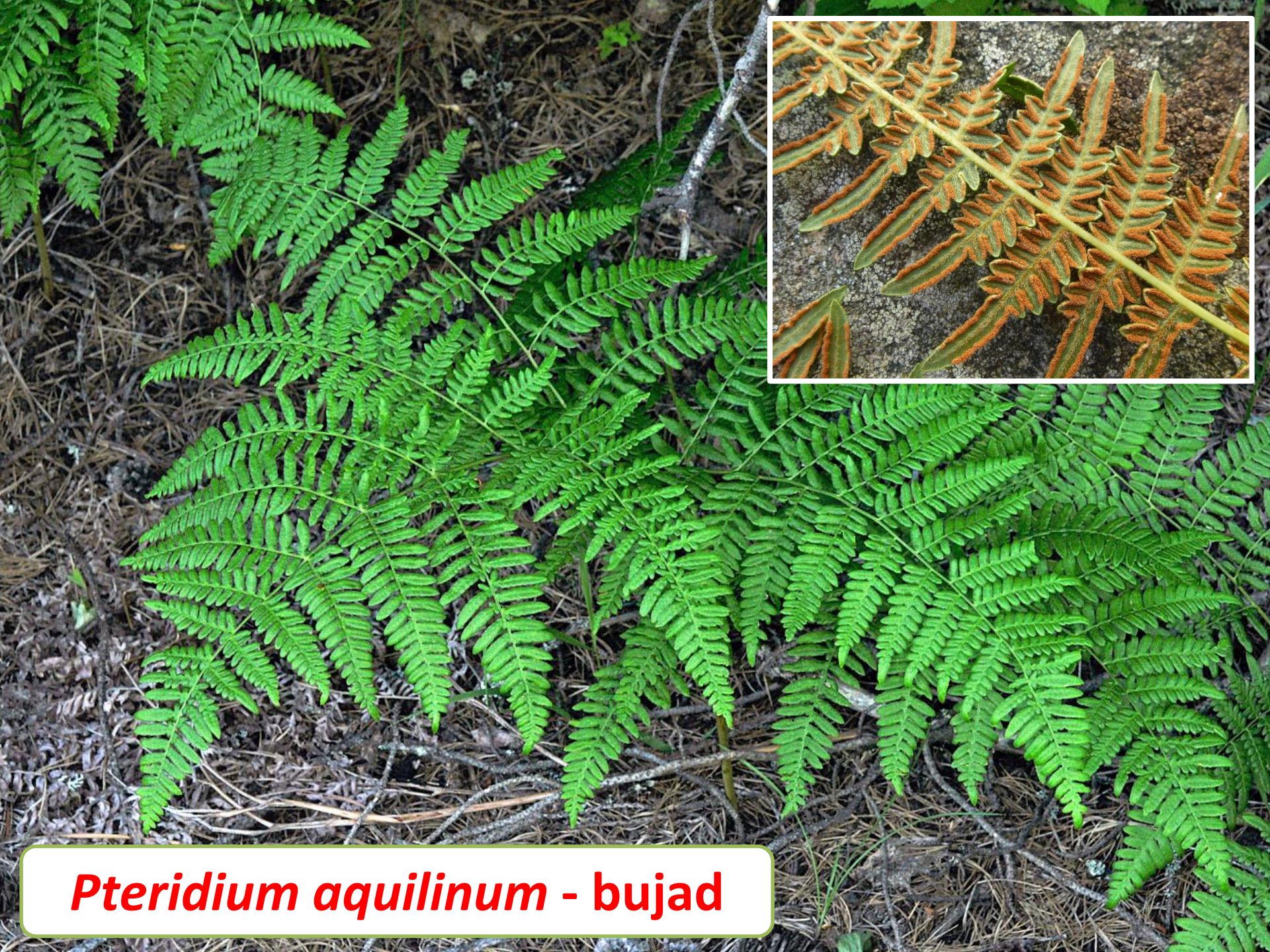
linearni
sorus



induzijum po
obodu sorsa



Divisio: *Polypodiophyta*
Classis: *Polypodiopsida*
Ordo: *Polypodiales*
Fam.: *Polypodiaceae*
Scolopendrium vulgare



***Pteridium aquilinum* - bujad**





***Dryopteris filix-mas* - navala**

Fig. 3 *Pinna* - upper surface

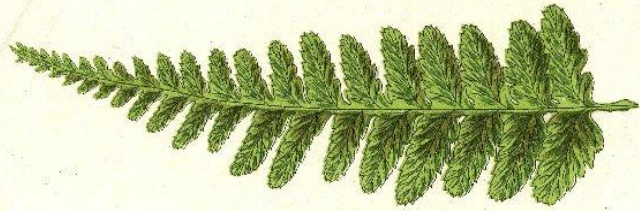


Fig. 2 *Leaf* - under surface



Fig. 1 *Underground Stem*
covered with snags of Old Leaves



Fig. 4 *Fertile Pinnae* - under surface ($\times 10$)



Fig. 6 *Sporangia*

a. unopened

b. opened

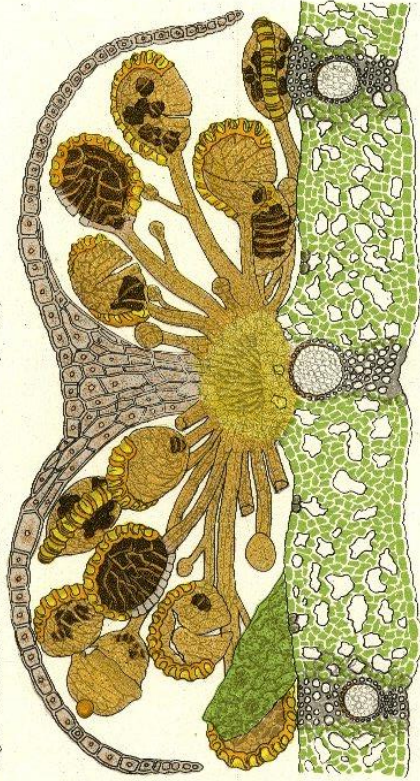


Fig. 7 *Spores* ($\times 500$)



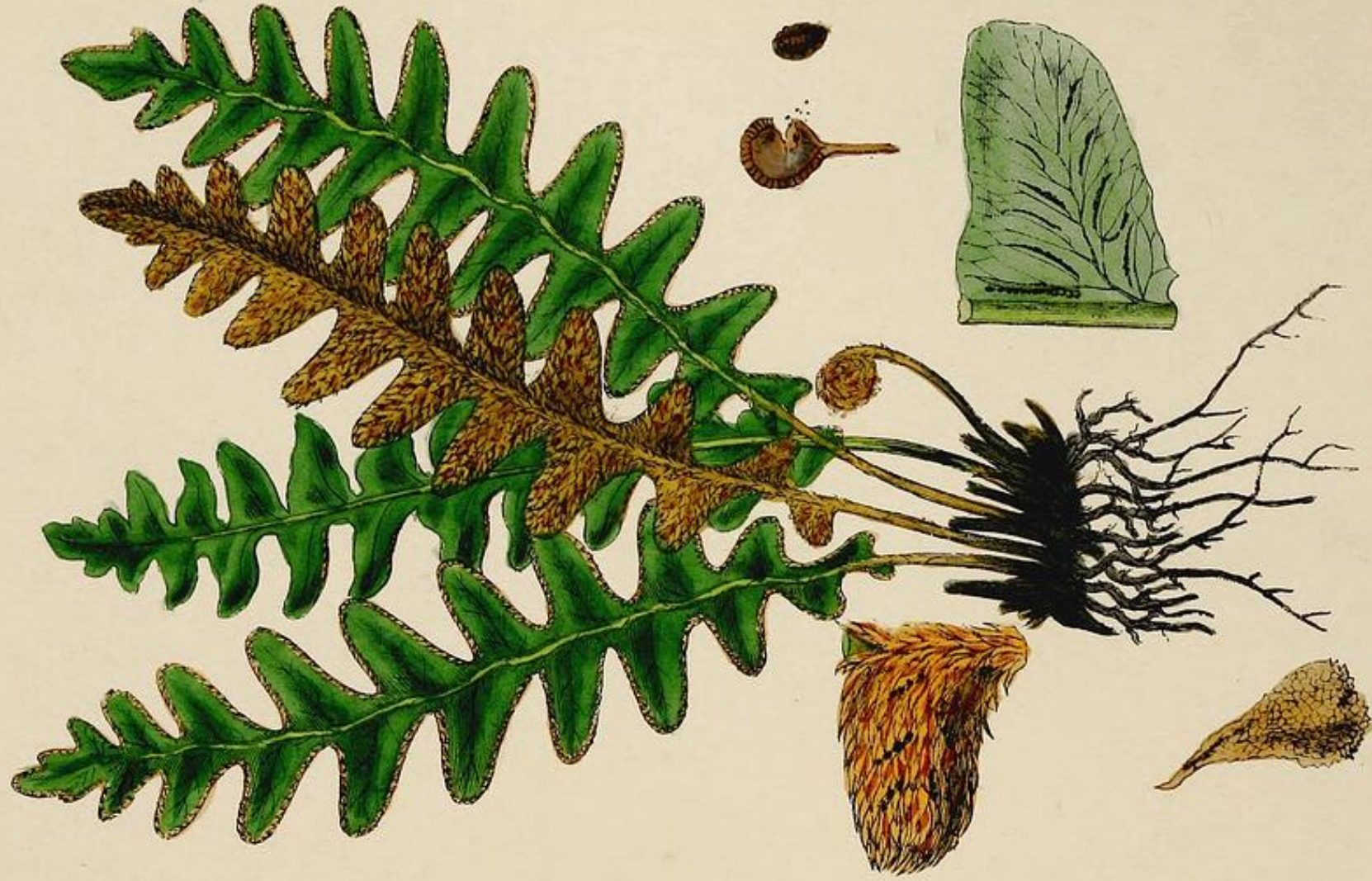
Eusporangiate with warty projections

Fig. 5 *Transverse section of Sorus & overlying portion of Pinnae*



Ceterach officinarum – zlatna paprat





Asplenium trichomanes





E. B. 576.

Asplenium Trichomanes.

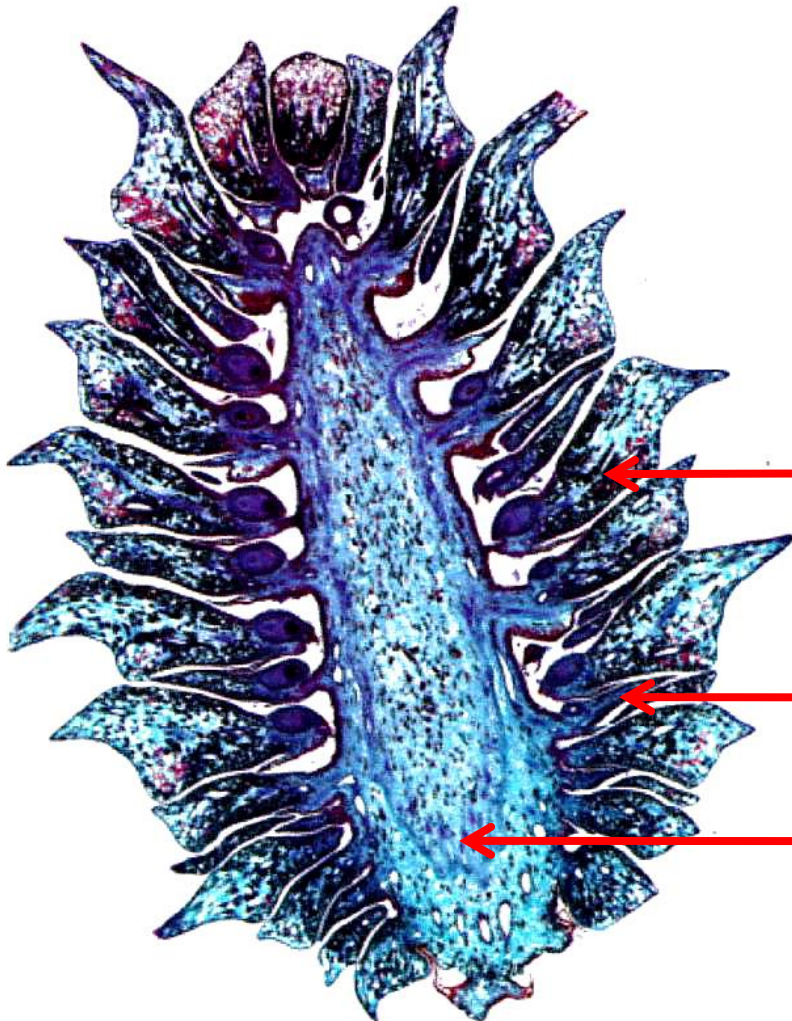
Maidenhair Spleenwort.

Divisio: ***PINOPHYTA***
- GOLOSJEMENJAČE -



Pinus sp.

- građa ženske šišarke -



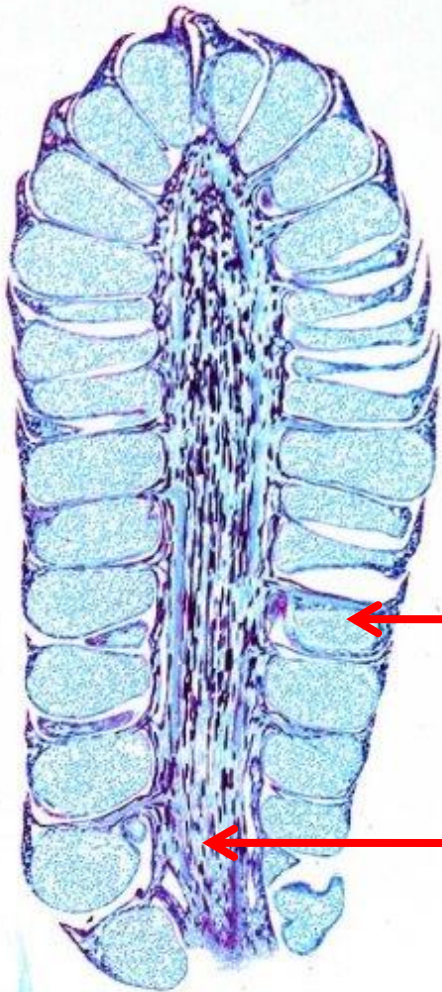
plodna ljuspa (makrosporofil)
sa sjemenovim zametkom

zaštitna ljuspa

osovina šišarke

Pinus sp.

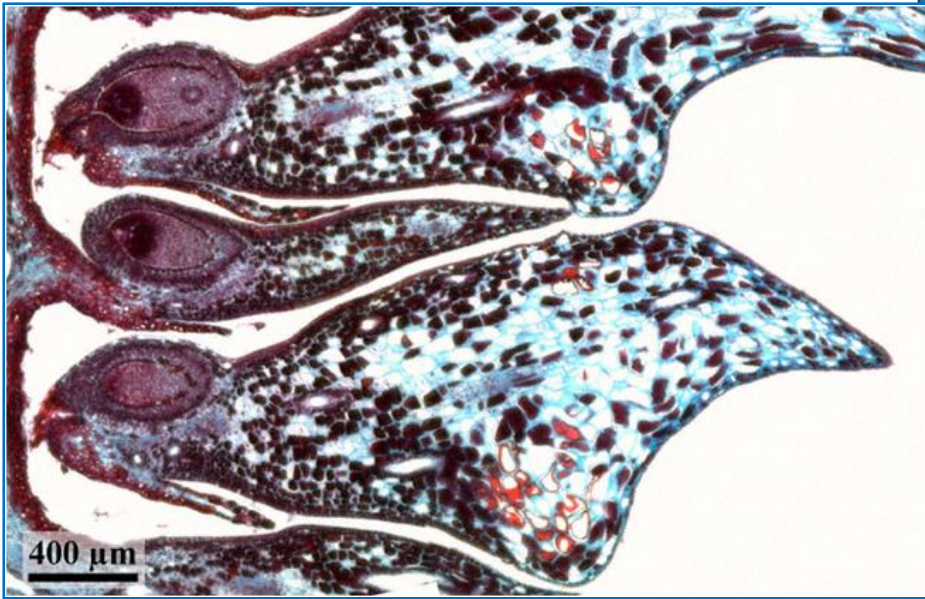
- građa muške šišarke -



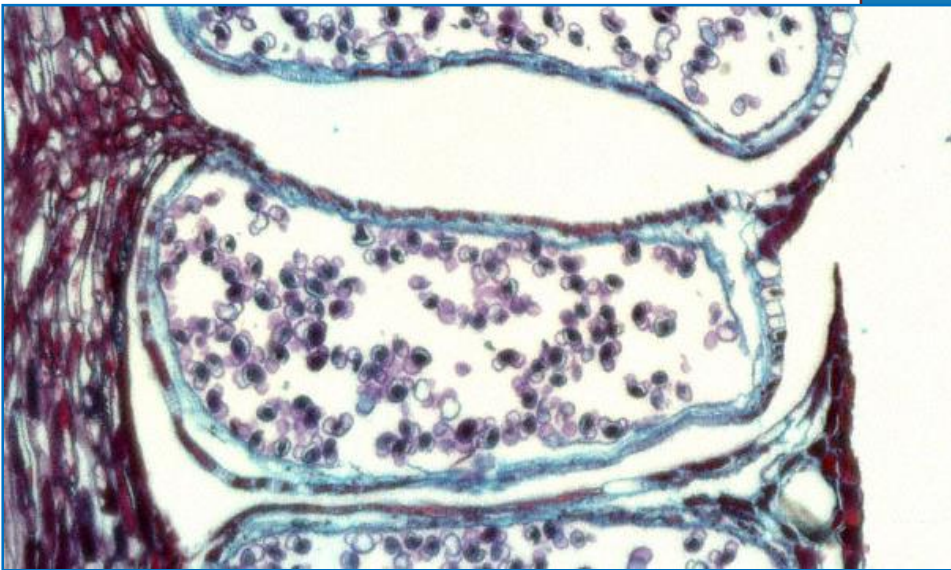
mikrosporofil sa
polenovom kesom

osovina šišarke





ženska
šišarka



"



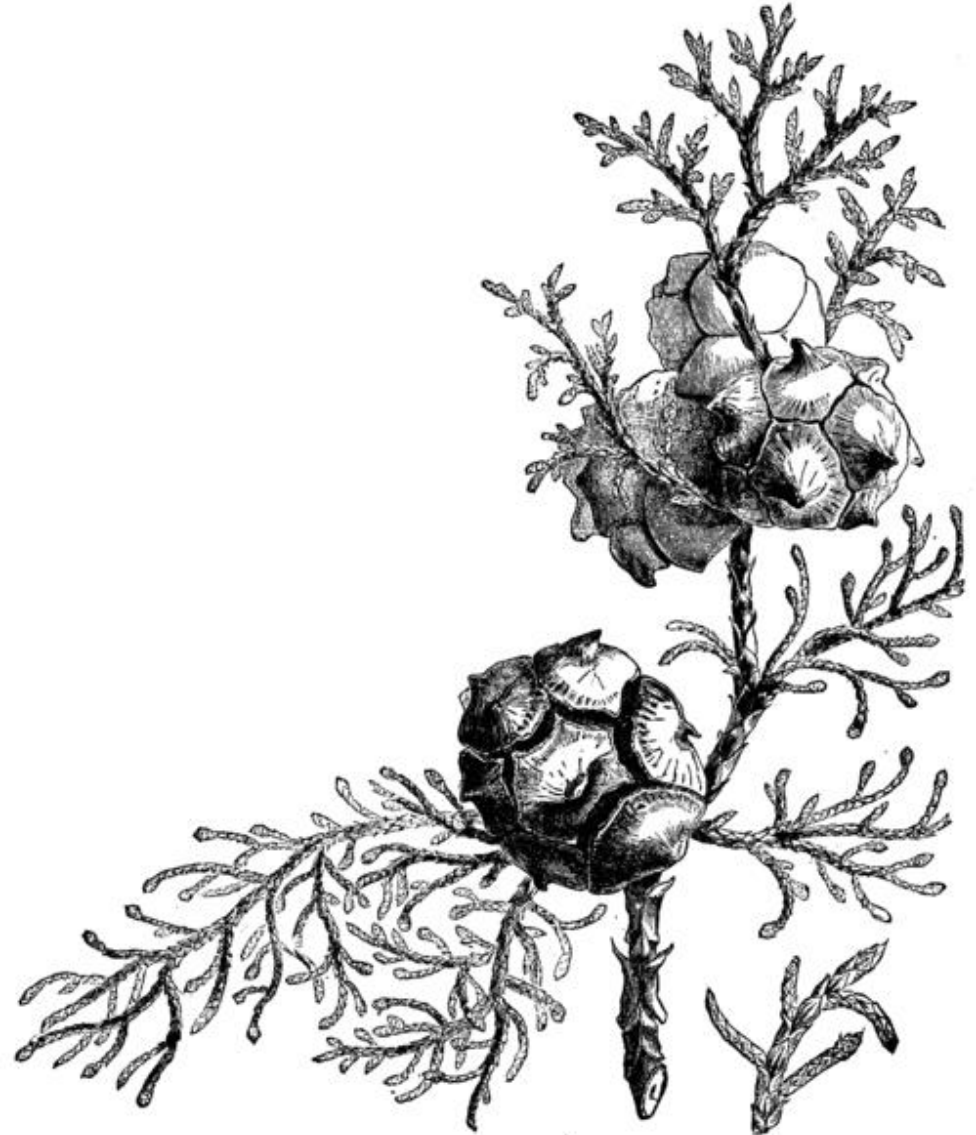
Fam.: *Pinaceae*

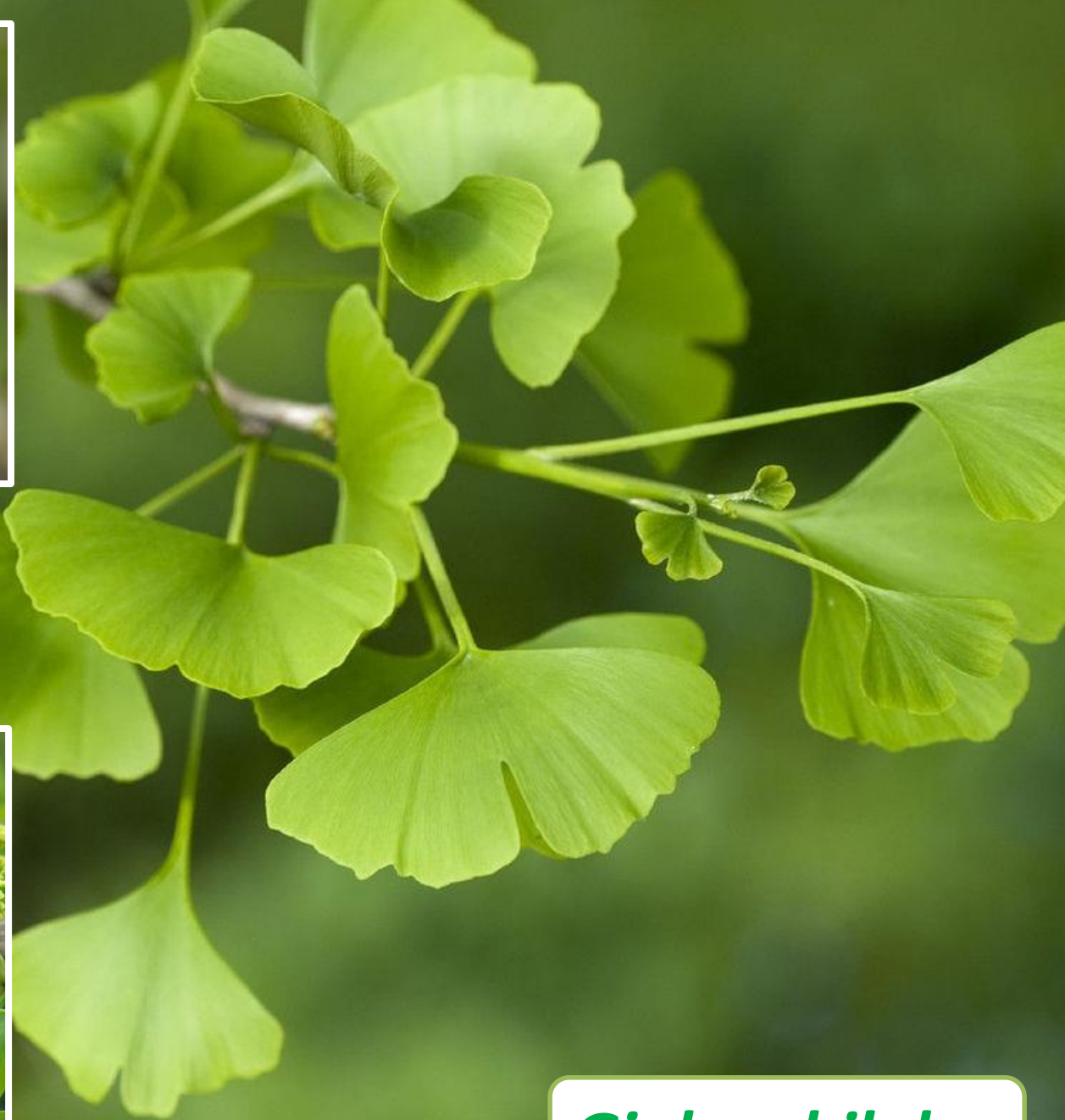
Pinus sp.



Fam.: *Cupressaceae*

Cupressus sempervirens





Ginkgo biloba



Larix decidua – ariš

***Pinus nigra* – crni bor**





Juniperus communis – kleka



***Cupressus sempervirens* – čempres**



Taxus baccata
(tisa)