

# Divisio: LICHENES (LICHENOPHYTA)

Classis: ASCOLICHENES

Subclassis: PYRENOCARPEAE

Ordo: VERRUCARIALES

*Verrucaria* sp.

Subclassis: GYMNOCARPEAE

Ordo: CALICIALES

*Calicium* sp.

Ordo: GRAPHIDALES

*Graphis scripta*

*Xylographa parallela*

Ordo: CYANOPHYLALES

*Lobaria pulmonaria*

*Peltigera canina*

*P. leucophlebia*

*Collema* sp.

# Divisio: **LICHENES (LICHENOPHYTA)**

## Ordo: **LECANORALES**

*Parmelia sulcata*

*Cetraria islandica*

*Pseudevernia furfuracea*

*Letharia vulpina*

*Usnea filipendula*

*Ramalina* sp.

## Ordo: **CALOPLACALES**

*Phycia biziana*

*Xanthoria parietina*

*Anaptychia ciliaris*

## Ordo: **LECIDEALES**

*Cladonia fimbriata*

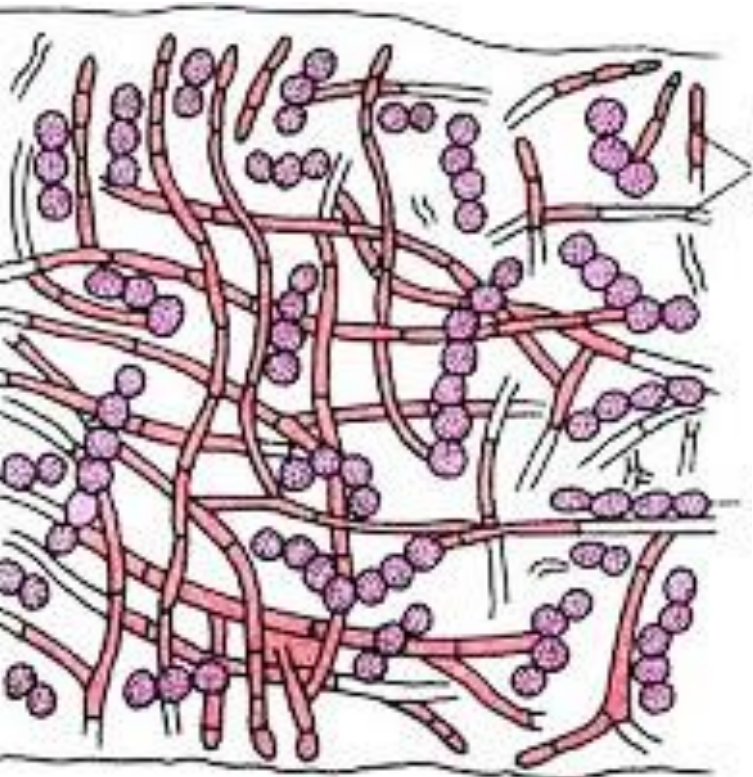
*C. gracilis*

*Rhizocarpon geographicum*

## Classis: **DEUTEROLICHENES**

*Lepraria* sp.

Presjek kroz  
homeomernan talus



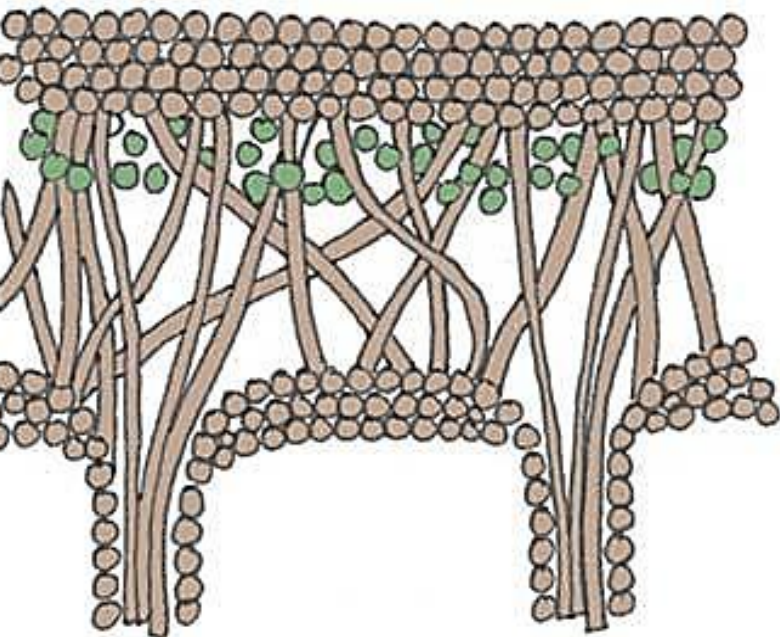
**rastresite  
hife gljive**

**ćelije alge  
u lancu**



**hife gljive i ćelije alge ravnomjerno  
raspoređene po cijelom talusu lišaja**

## Presjek kroz heteromeran talus



gornja kora

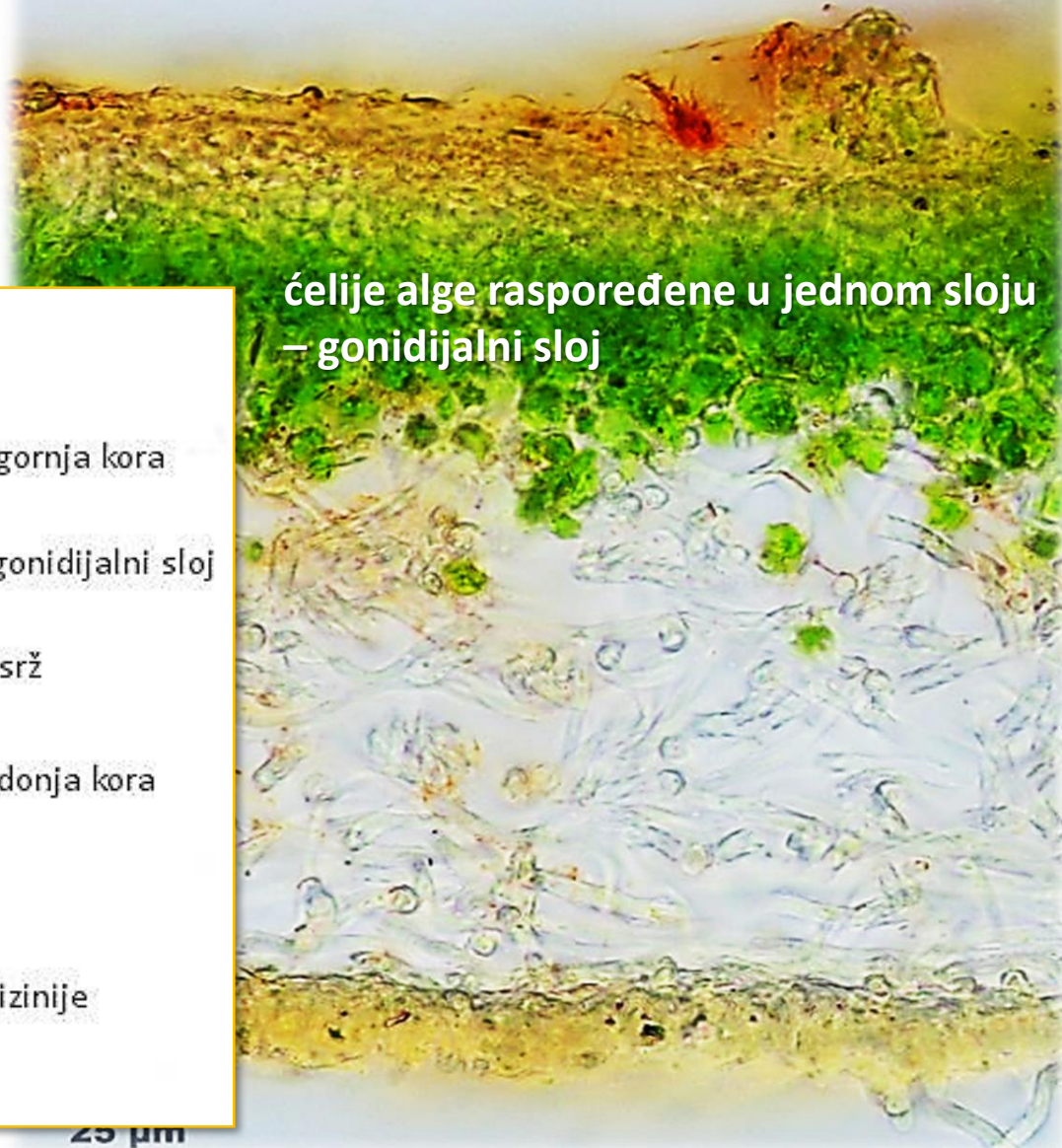
gonidijalni sloj

srž

donja kora

rizinije

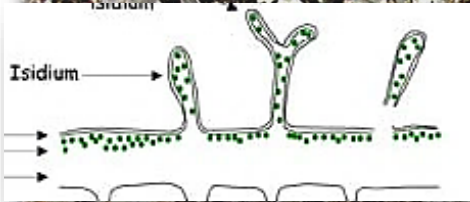
25 µm



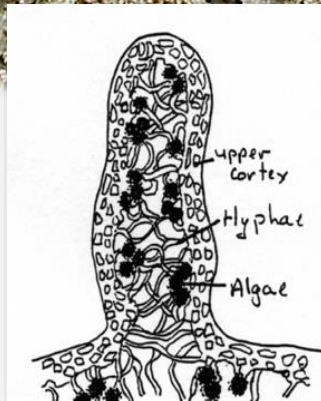
ćelije alge raspoređene u jednom sloju  
– gonidijalni sloj

# Strukture za vegetativno razmnožavanje:

- Soredije na *Lobaria pulmonaria*
- Izidije na *Parmelia saxatilis*



Izidije



Soredije



## Plodonosna tijela

- Lecidejne apotecije na *Bacidia* sp.
- Lekanorne apotecije na *Lecanora* sp.



*Lecidejne apotecije*

*Lekanorne apotecije*

