

# ORALNA PATOLOGIJA

## VJEŽBA BR. 3

Dr. sci. med. Mirjana Miladinović

# ▶ CYSTA LATERALIS COLLI

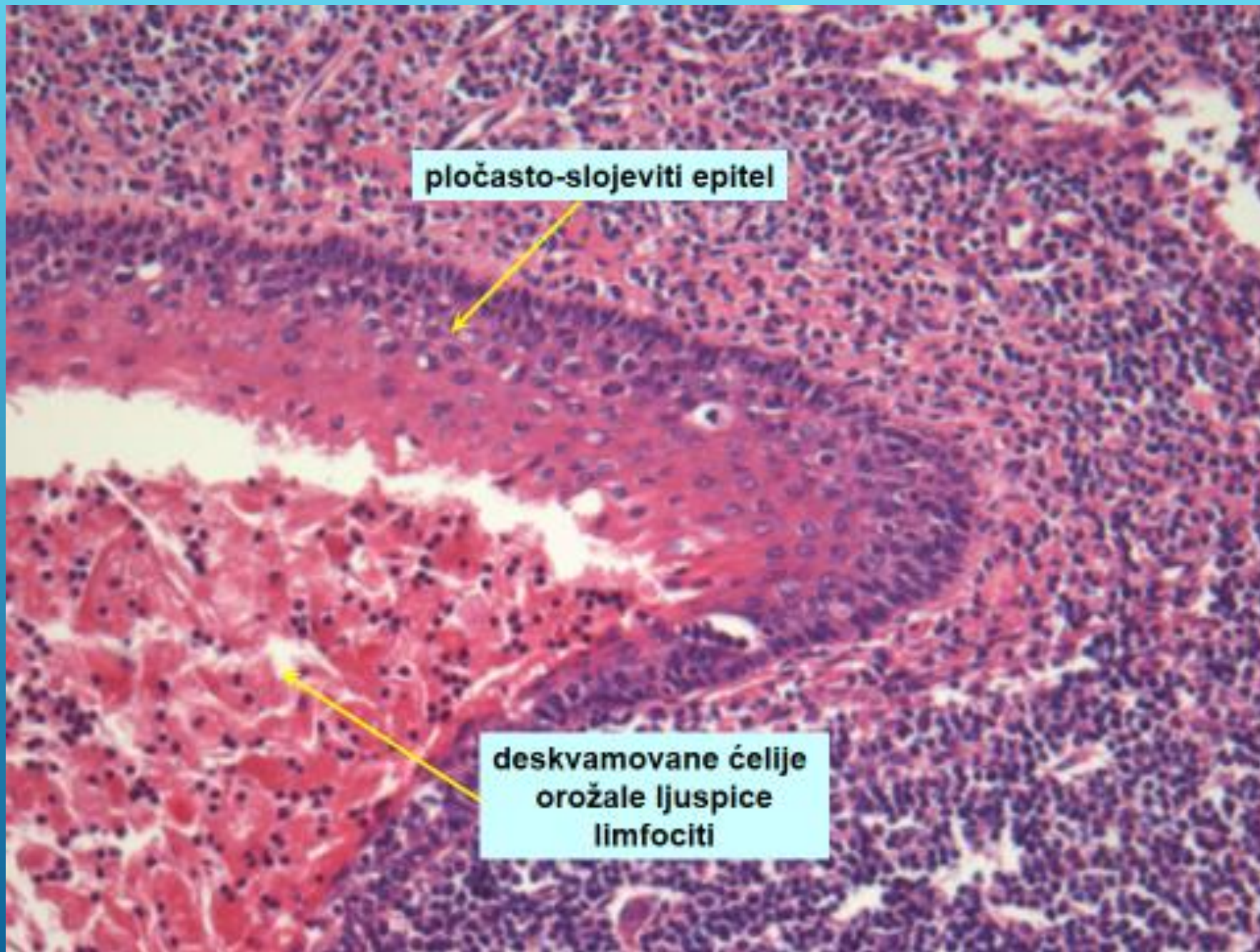




limfoidno tkivo

lumen

pločasto-slojeviti epitel

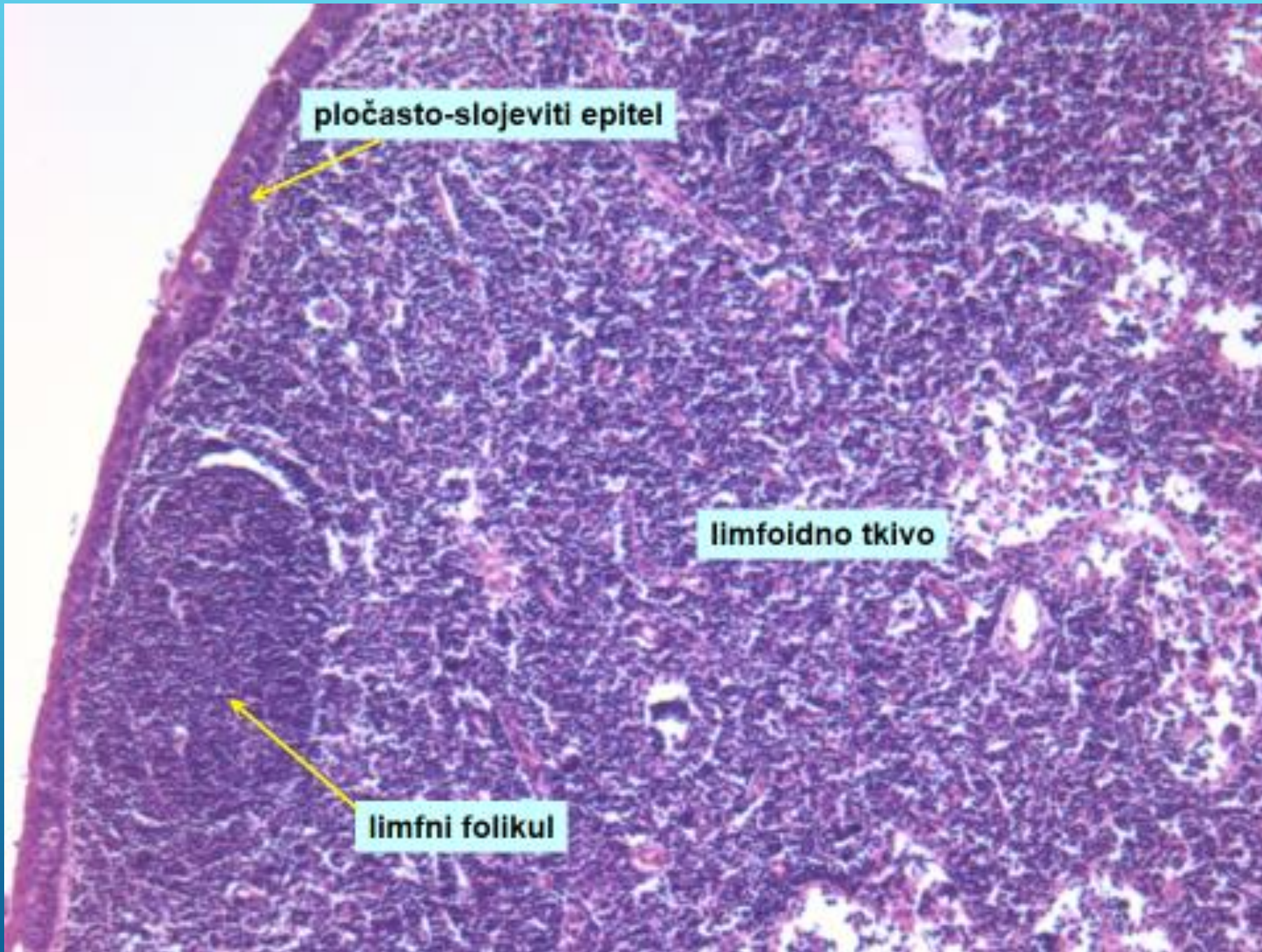


**pločasto-slojeviti epitel**



**deskvamovane ćelije  
orožale ljuspice  
limfociti**

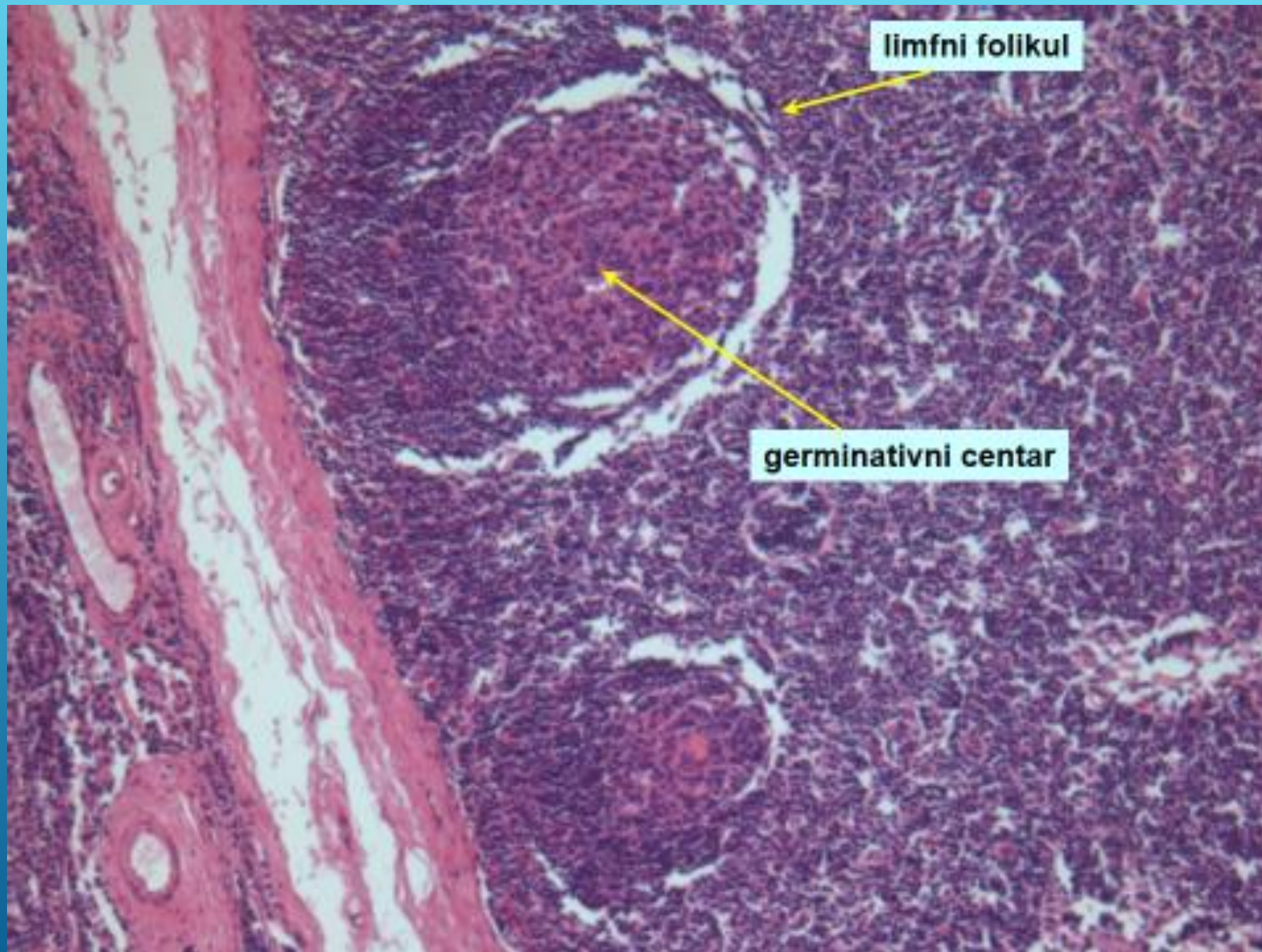




pločasto-slojeviti epitel

limfoidno tkivo

limfni folikul



limfni folikul

germinativni centar

# ▶ CYSTA FOLLICULARIS





**zid ciste**

**pločasto-slojeviti epitel**

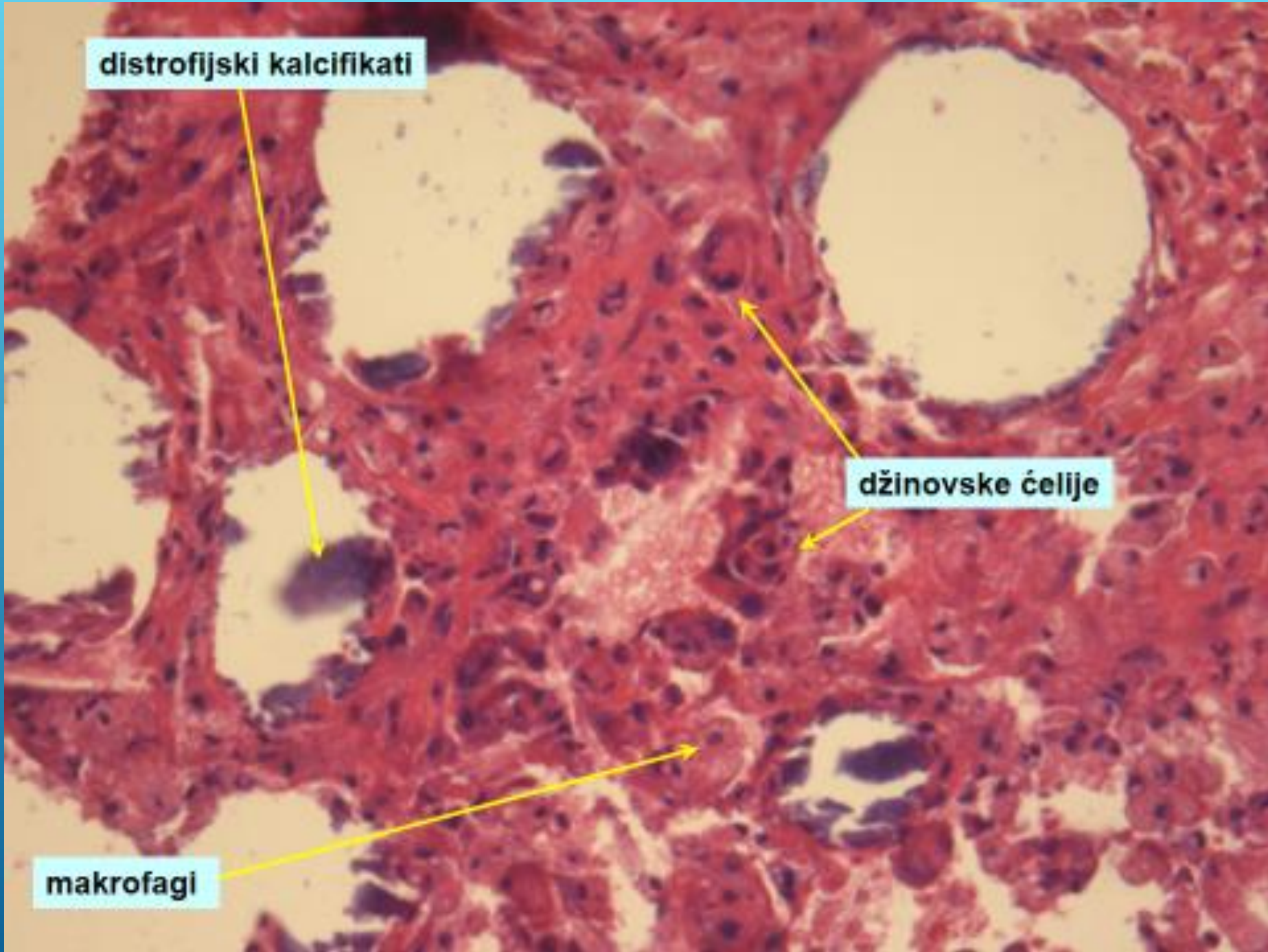


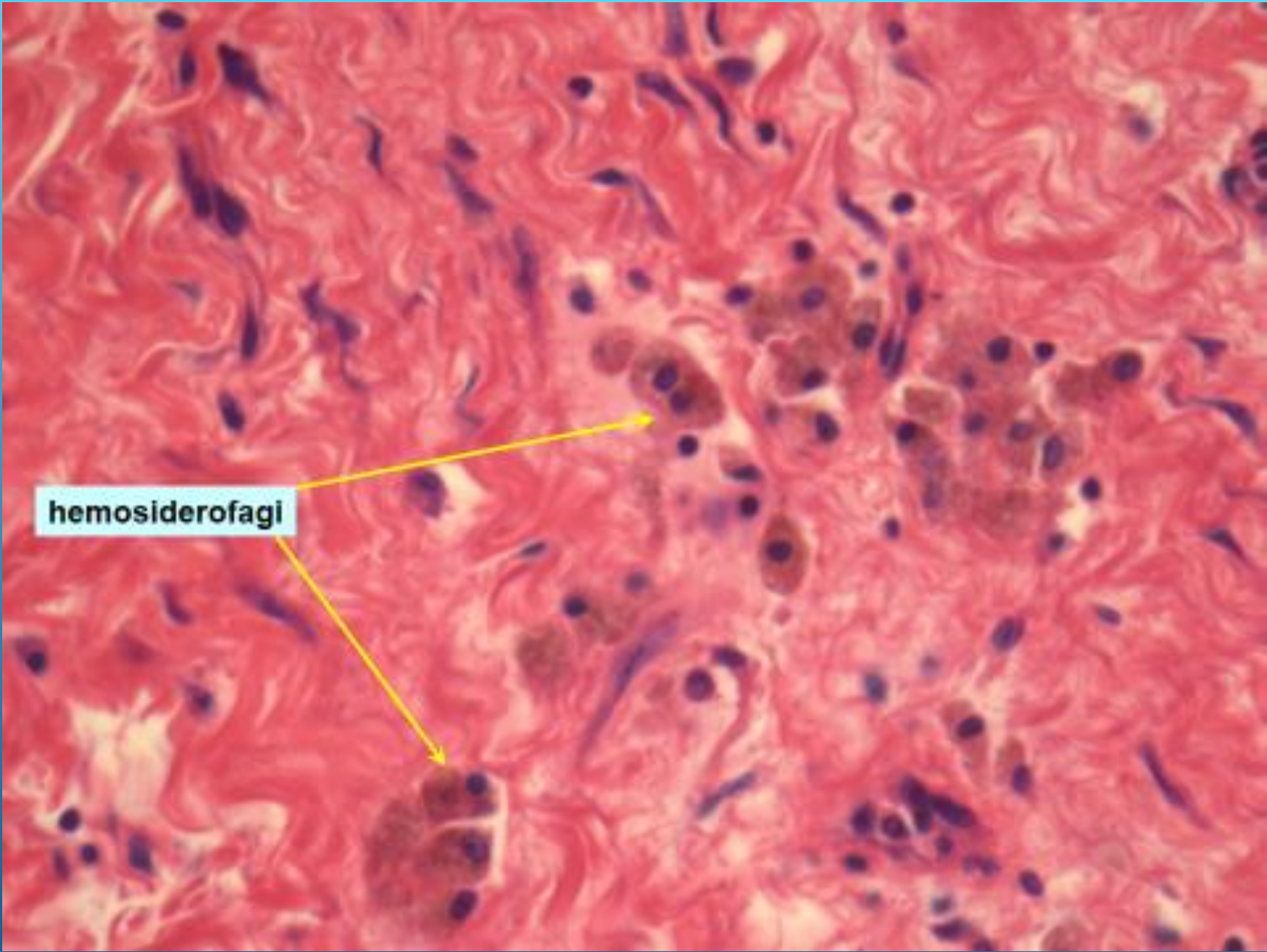


**distrofijski kalcifikati**

**džinovske ćelije**

**makrofagi**

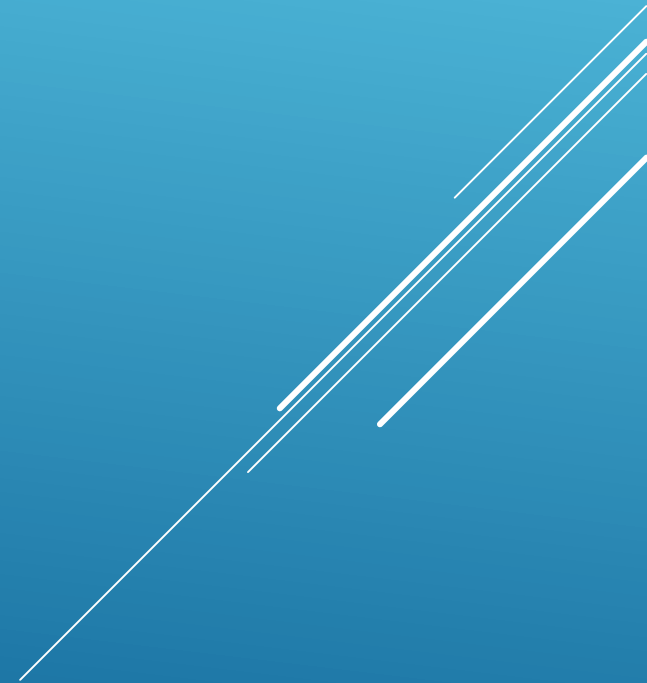


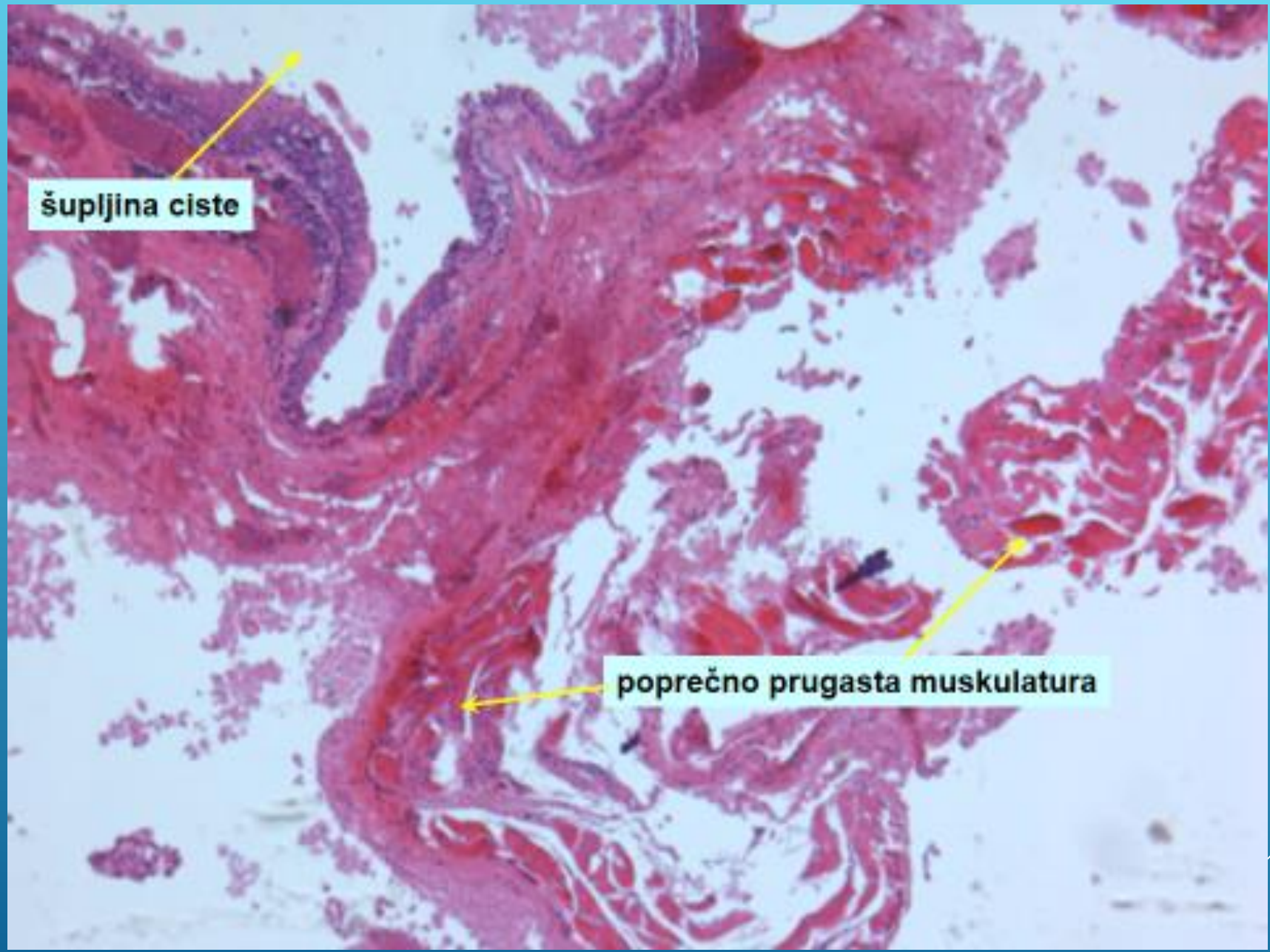


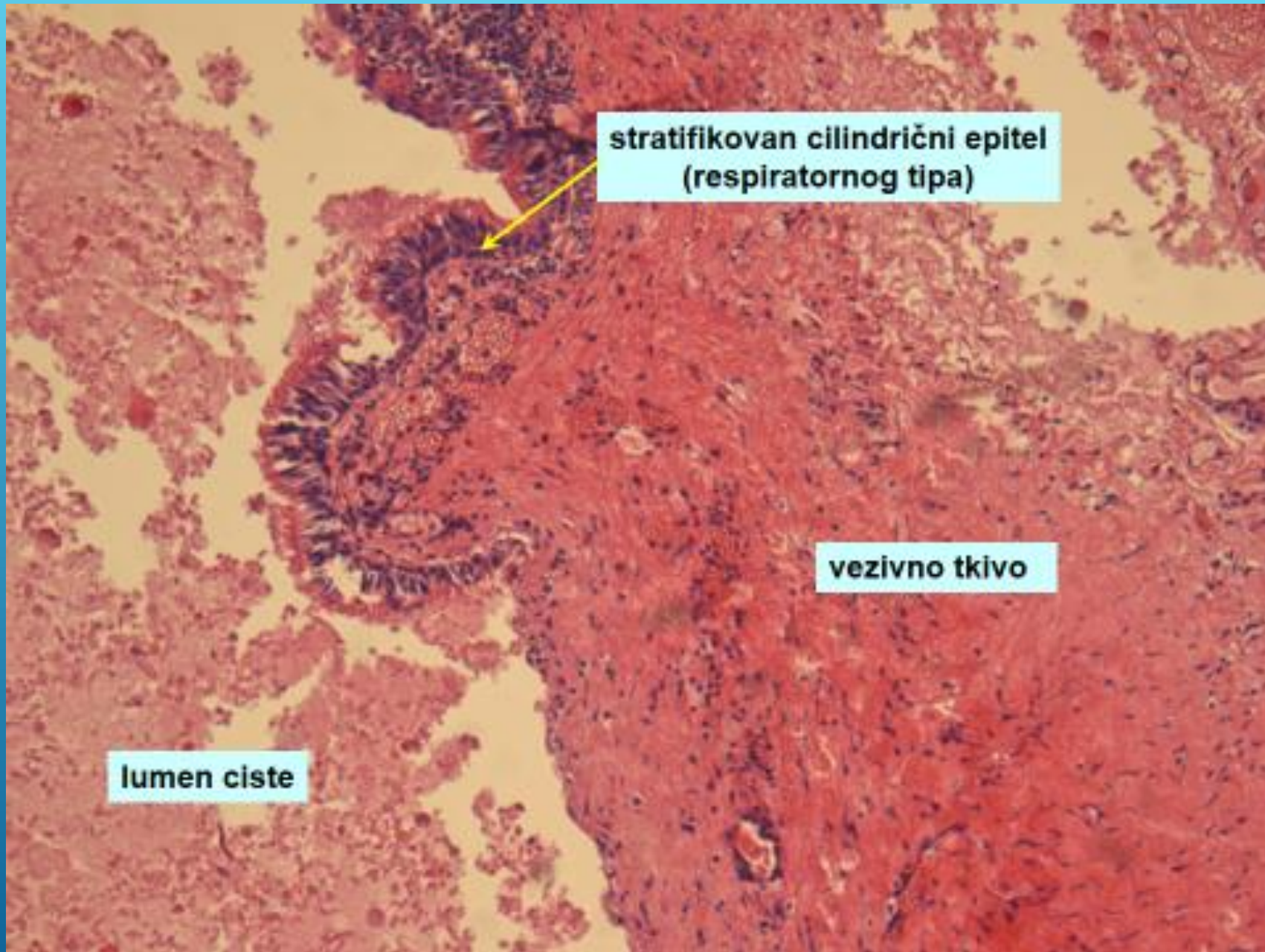
**hemosiderofagi**



# ▶ CYSTA MEDIANA COLLI



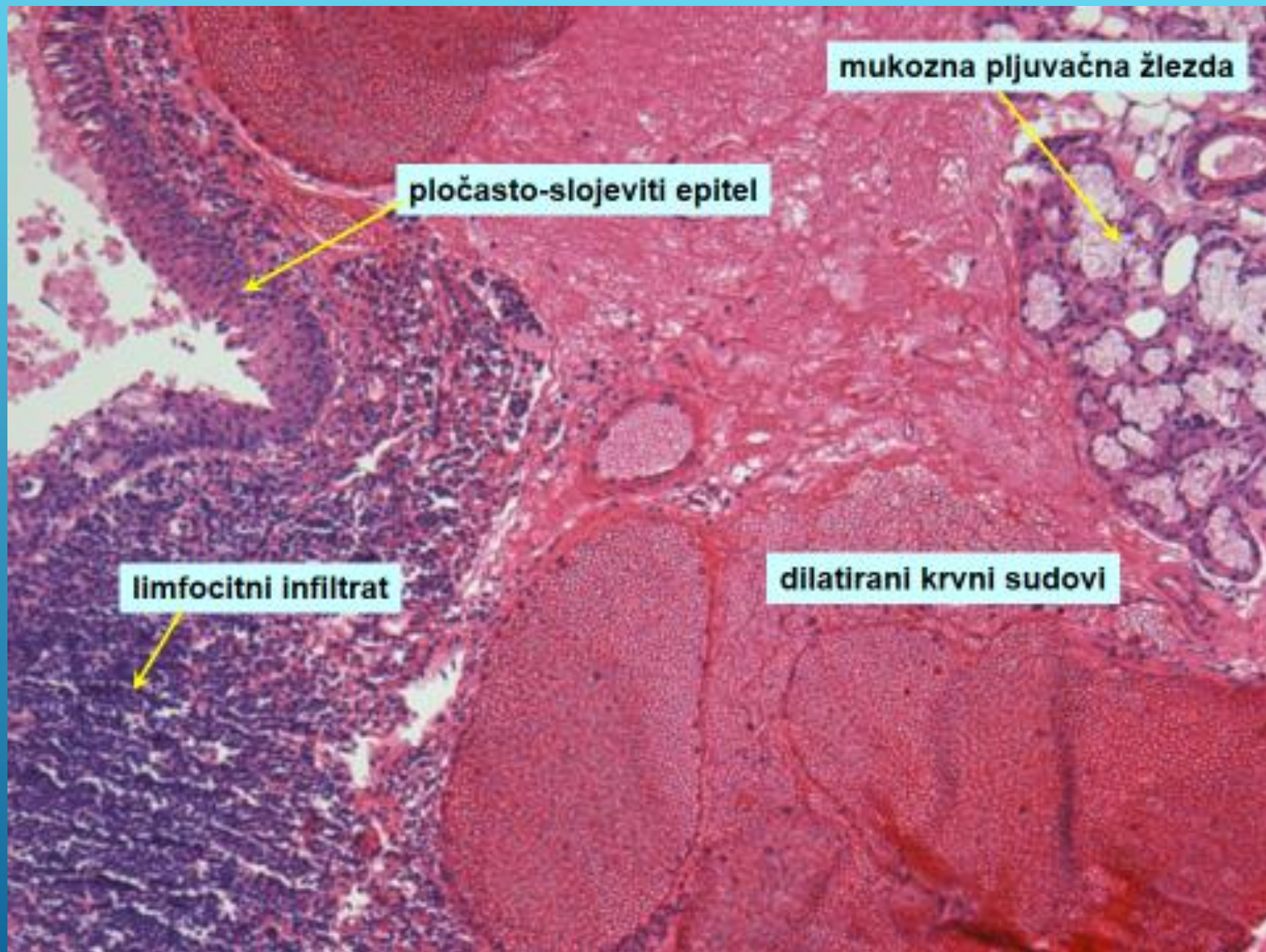




stratifikovan cilindrični epitel  
(respiratornog tipa)

vezivno tkivo

lumen ciste



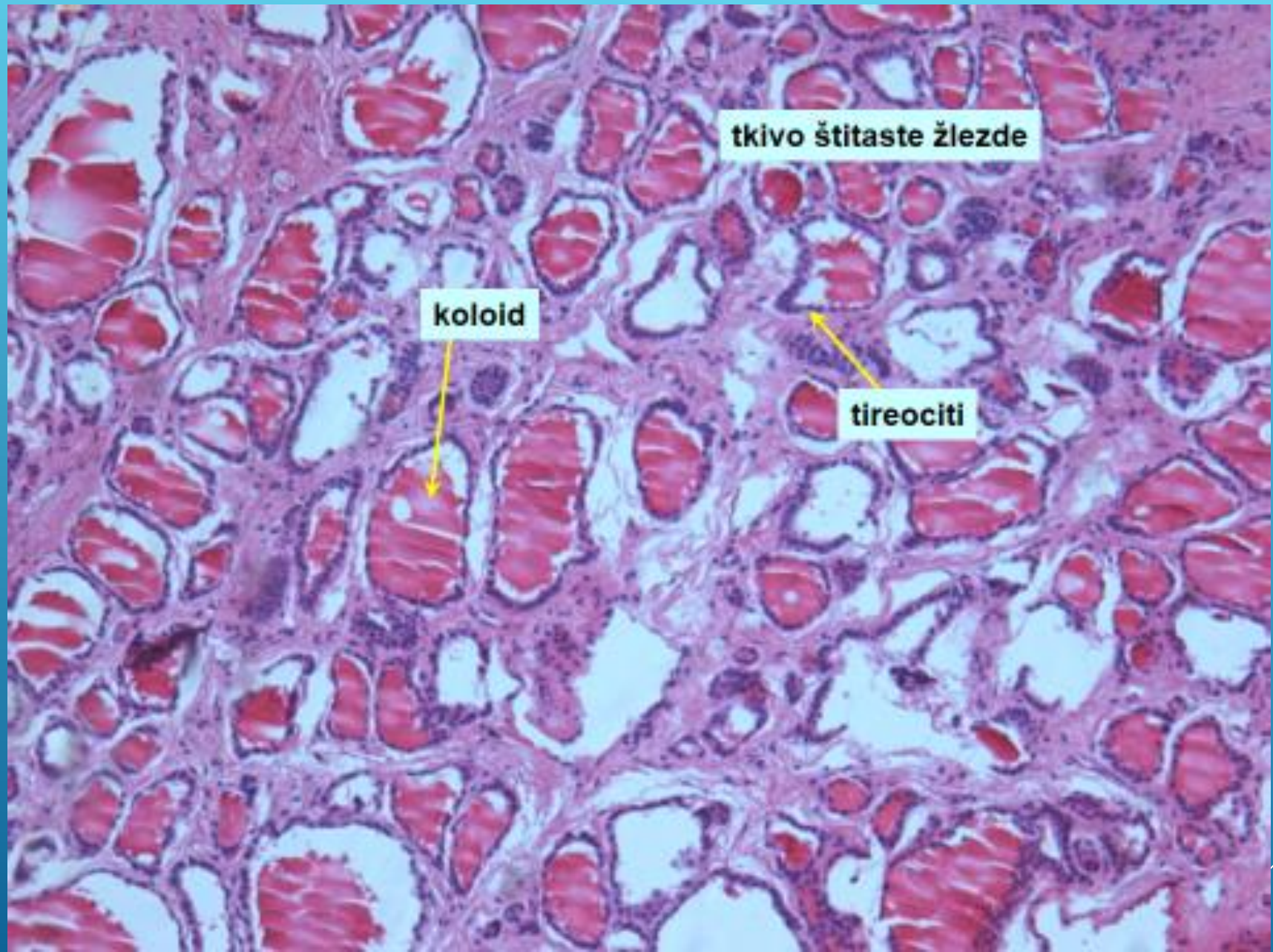
mukozna pljuvačna žlezda

pločasto-slojeviti epitel

limfocitni infiltrat

dilatirani krvni sudovi

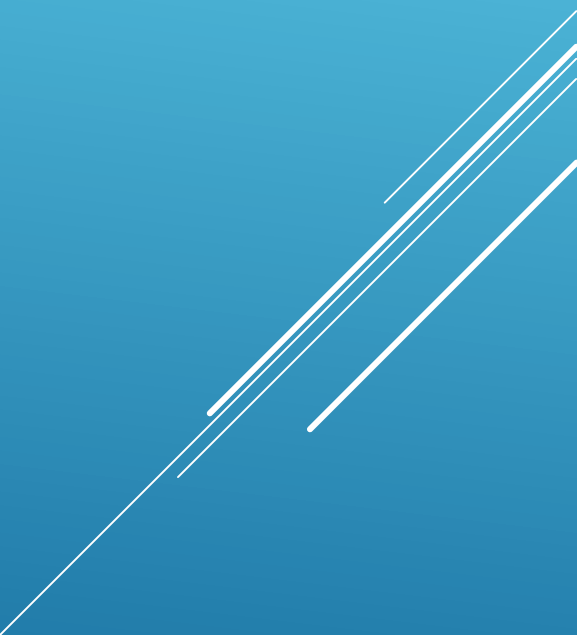


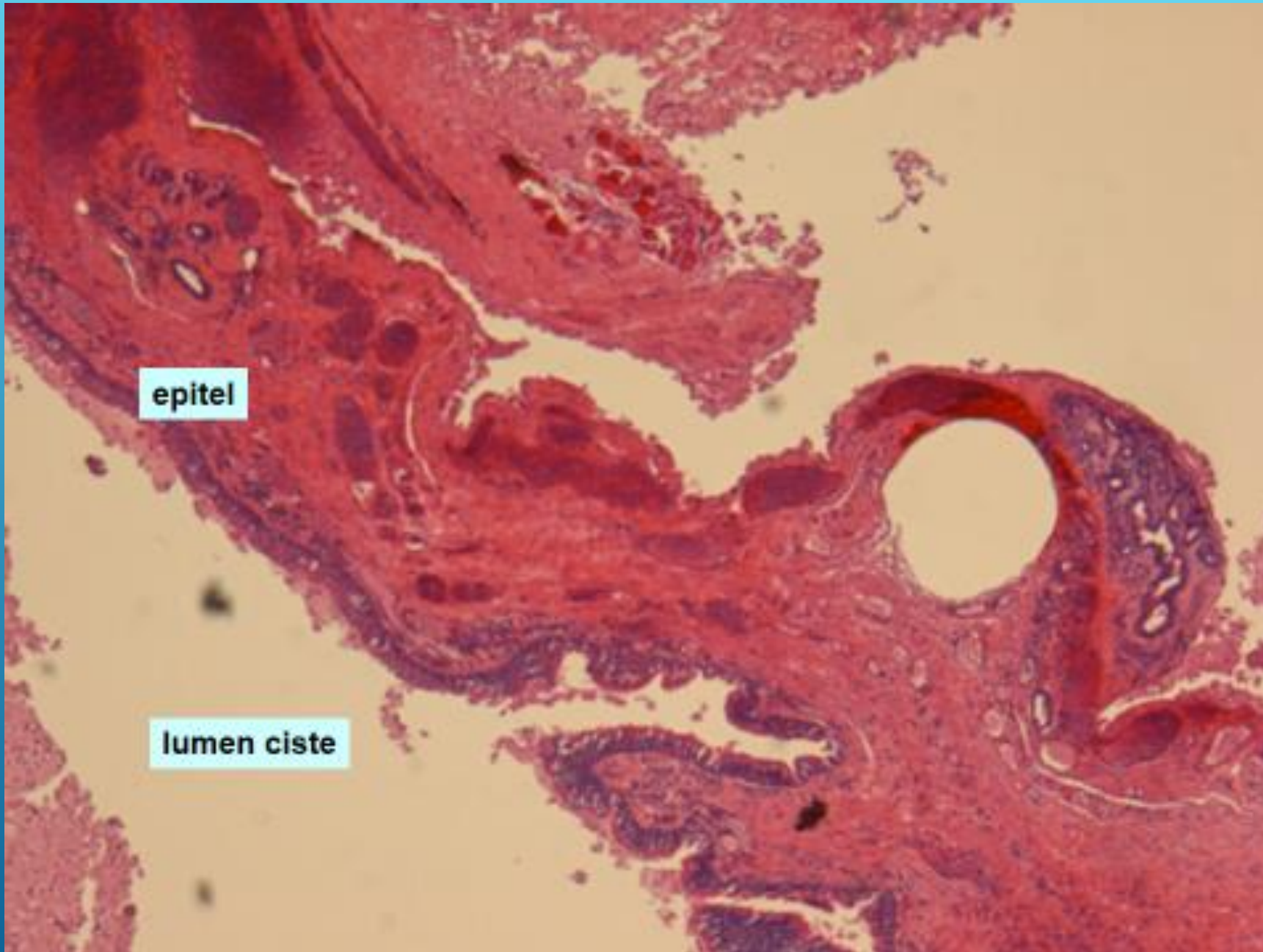


tkivo štitaste žlezde

koloid

tireociti

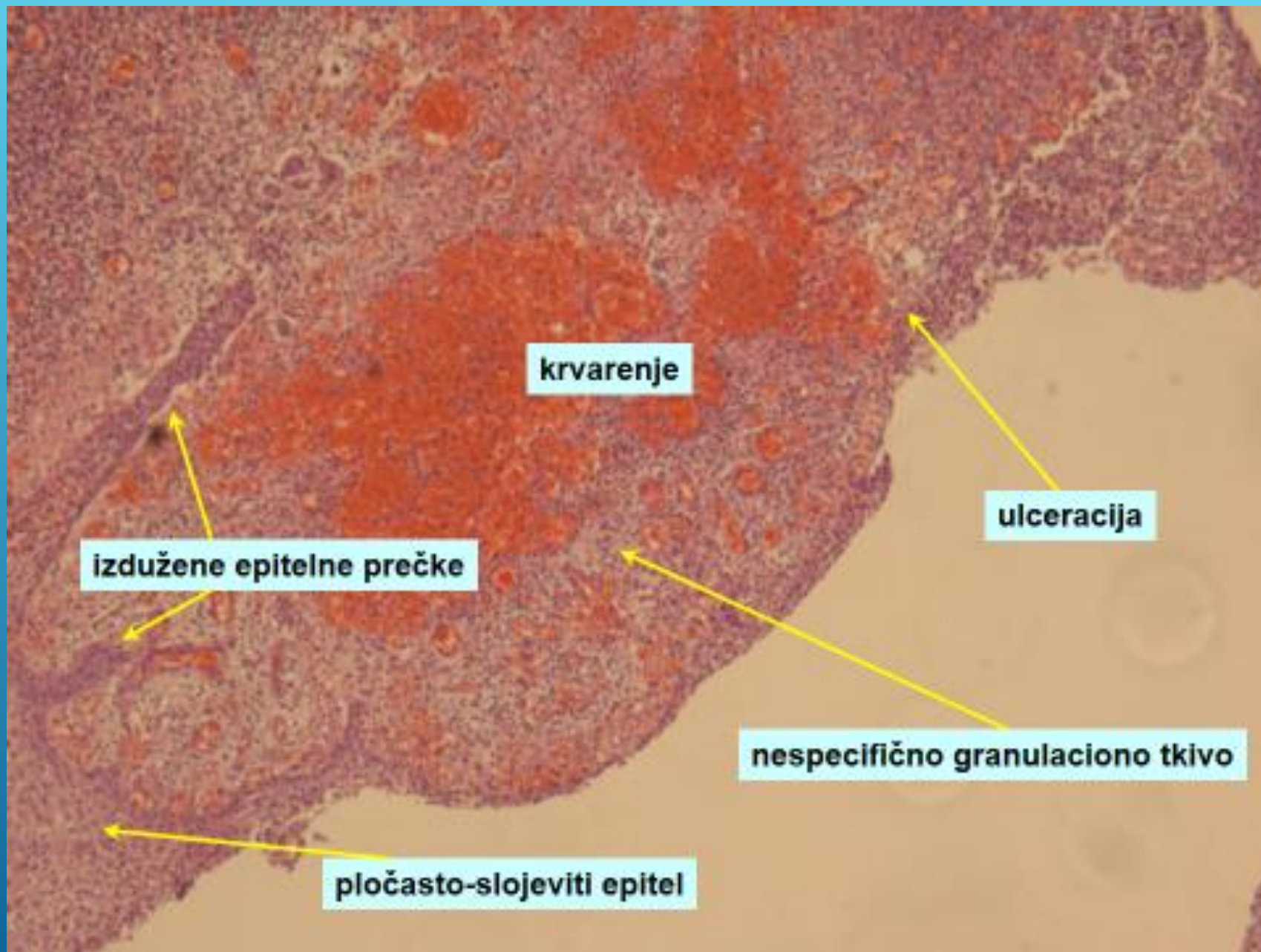






# ▶ CYSTA RADICULARIS





krvarenje

ulceracija

izdužene epitelne prečke

nespecifično granulaciono tkivo

pločasto-slojeviti epitel

