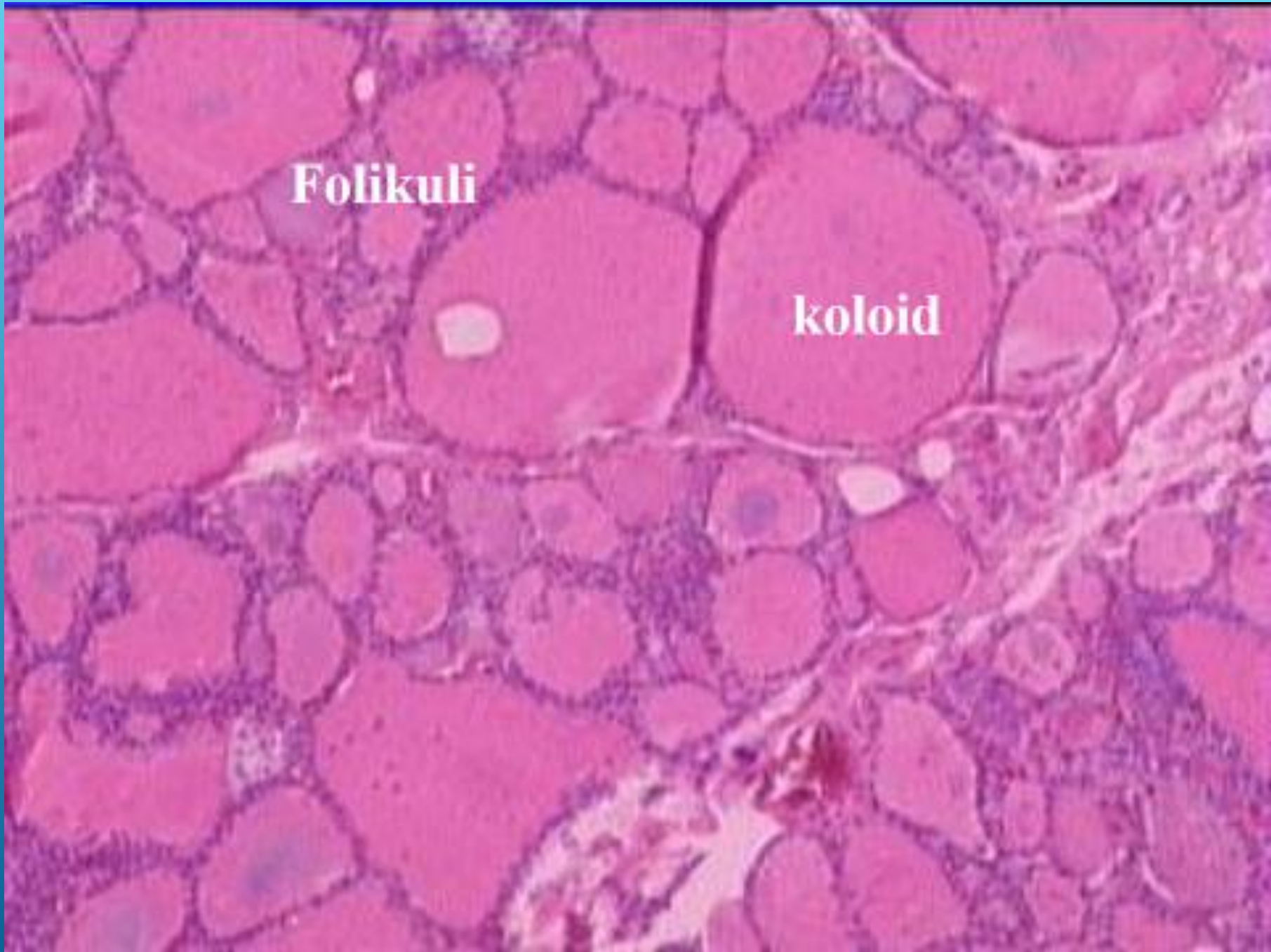


SPECIJALNA PATOLOGIJA

ENDOKRINI SISTEM

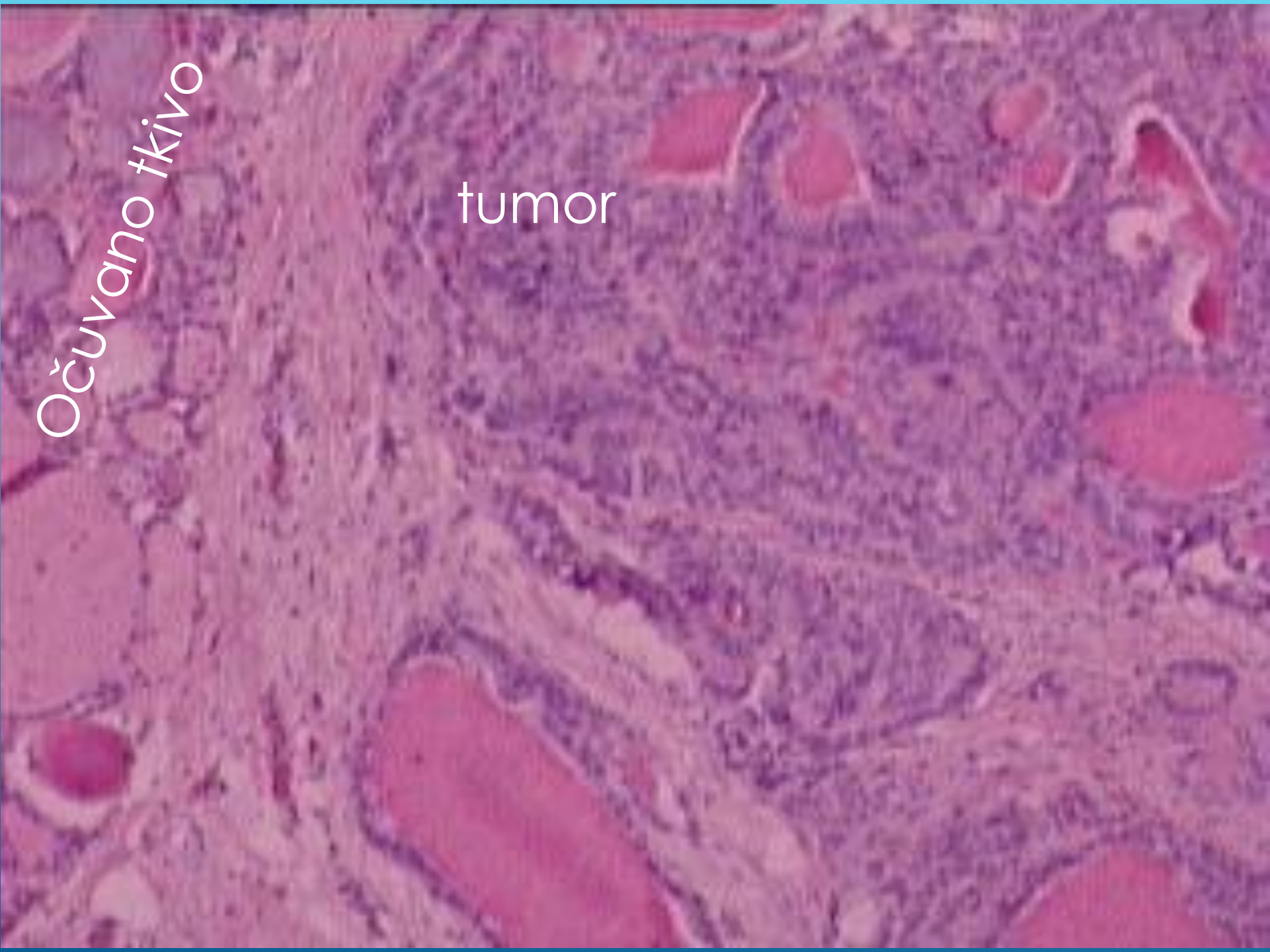
Dr sci. med. Mirjana Miladinović



Folikuli

koloid





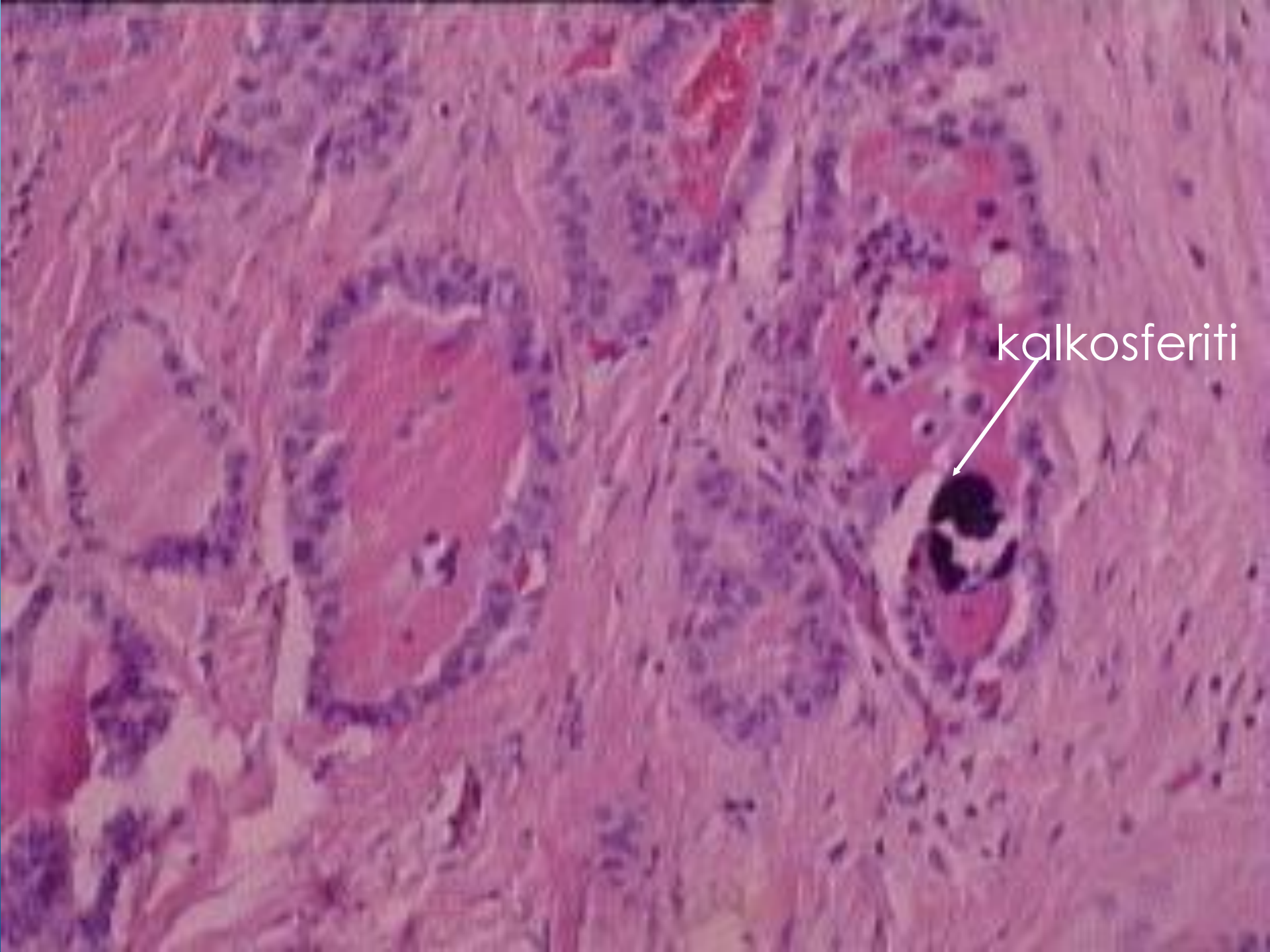
Očuvano tkivo

tumor



A microscopic image of tissue, likely a histological section, showing a complex, interconnected network of cells and fibers. The tissue is stained in shades of purple and pink. A prominent feature is a large, rounded, reddish structure in the upper left quadrant, which is identified as a papilla. The surrounding tissue consists of numerous smaller, irregularly shaped cells and fibers, creating a dense, textured appearance. The word "papile" is overlaid in white text in the center of the image.

papile



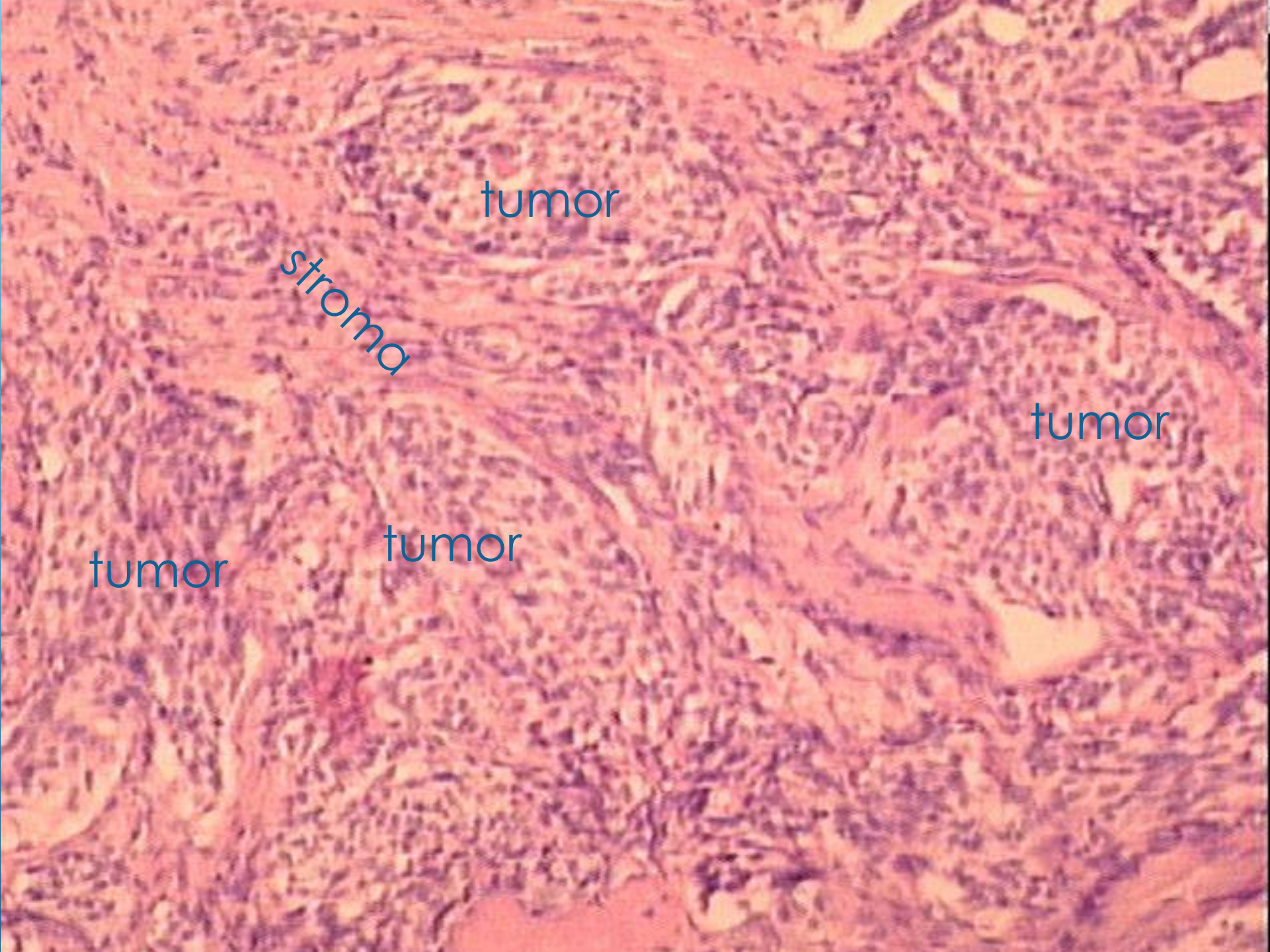
kalkosferiti



Karakteristična jedra

A histological micrograph of thyroid tissue stained with hematoxylin and eosin (H&E). The image displays numerous thyroid follicles of varying sizes. Each follicle is bounded by a single layer of cuboidal epithelial cells. The interior of each follicle is filled with a clear, eosinophilic substance representing colloid. The nuclei of the epithelial cells are stained dark purple. The overall architecture is organized into a regular, repeating pattern of follicles.

folikuli



tumor

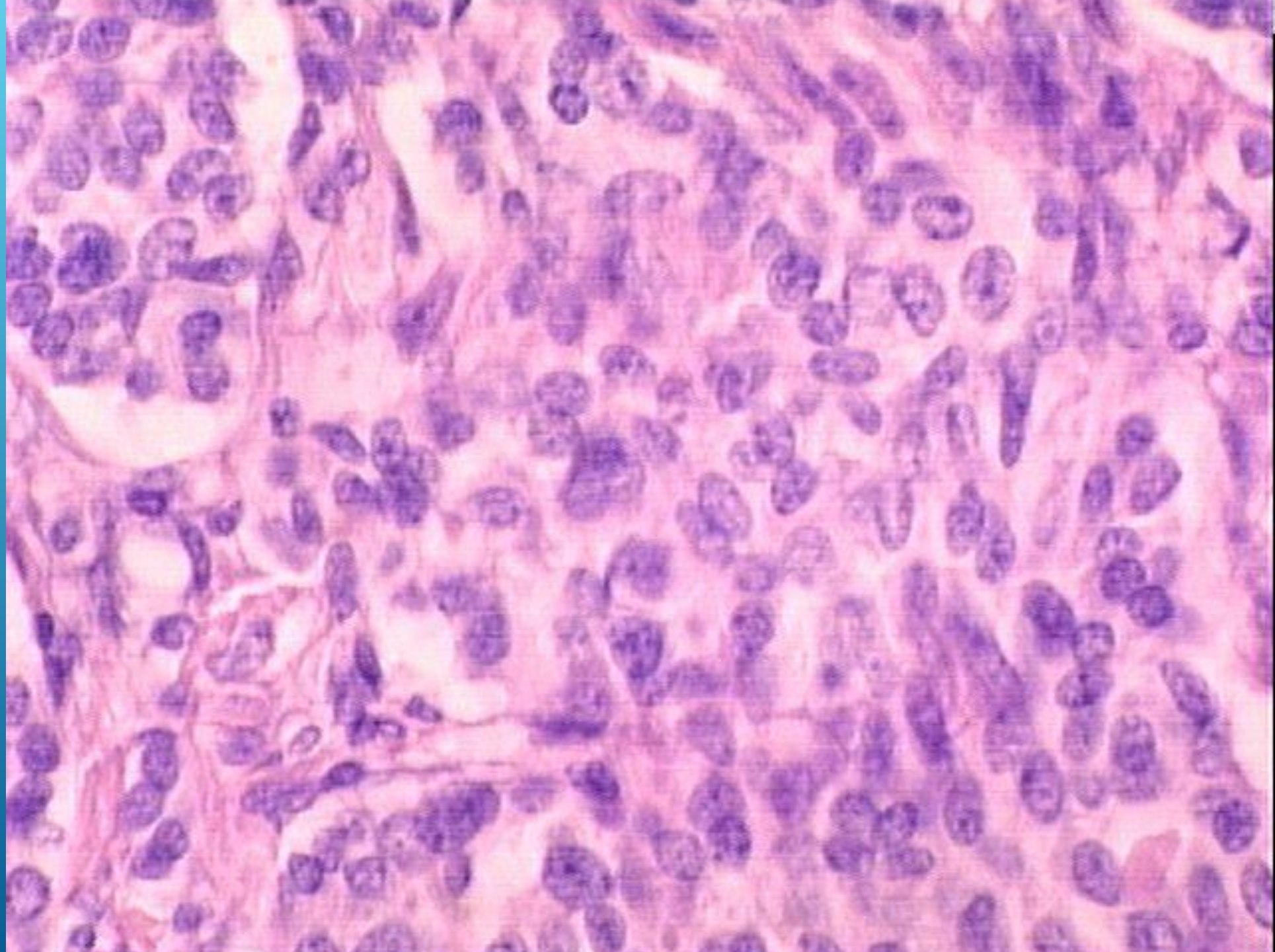
stroma

tumor

tumor

tumor





A histological micrograph showing a tissue section stained with hematoxylin and eosin (H&E). The image displays a dense population of cells with dark purple nuclei and pink cytoplasm/extracellular matrix. A prominent feature is a large, pale pink, amorphous deposit in the center, which is characteristic of amyloid. The word "Amiloid" is overlaid in black text on this central deposit. The surrounding tissue shows cellular detail, including some larger cells with more prominent nuclei and others that are smaller and more densely packed.

Amiloid

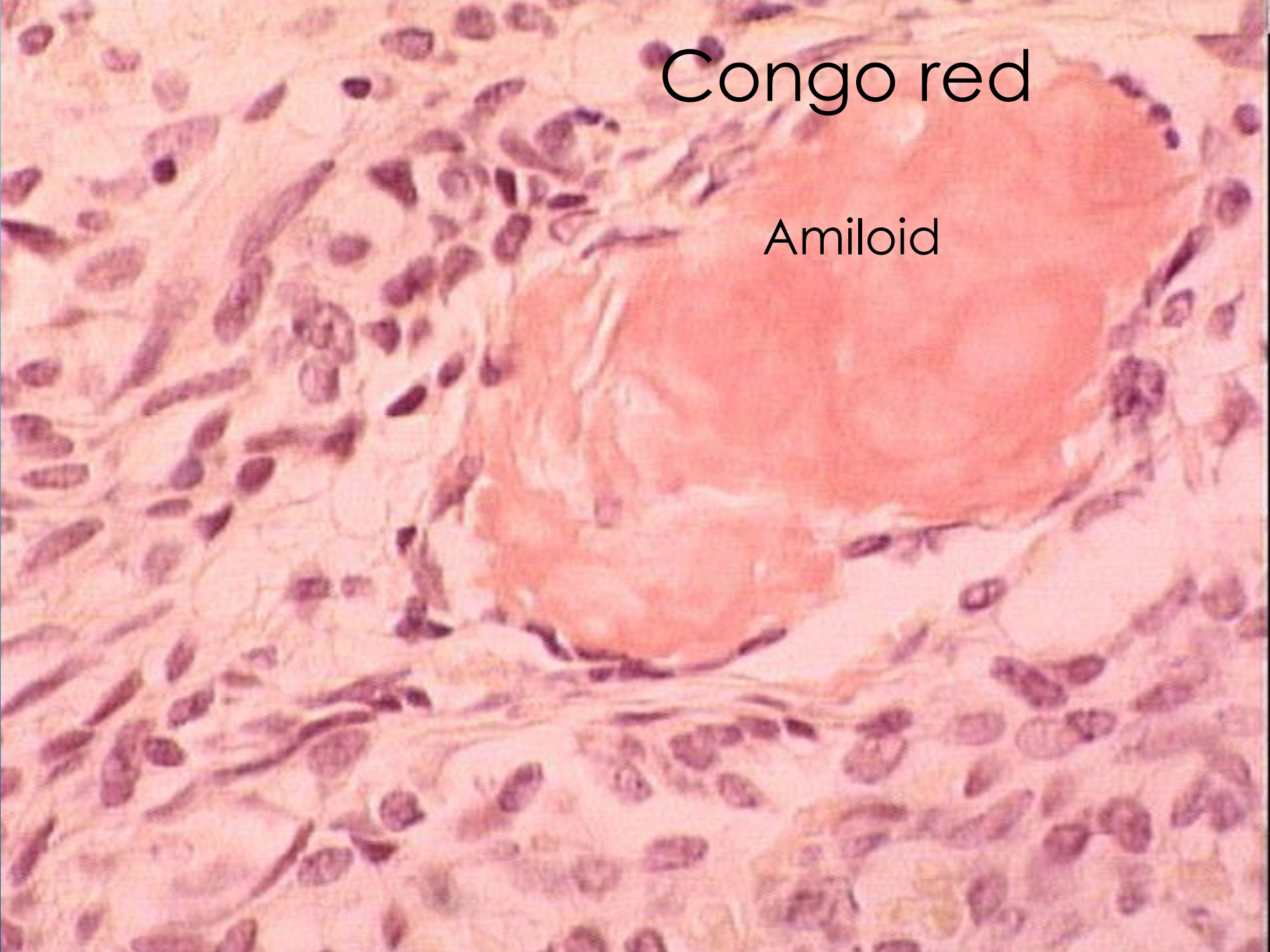


Amiloid



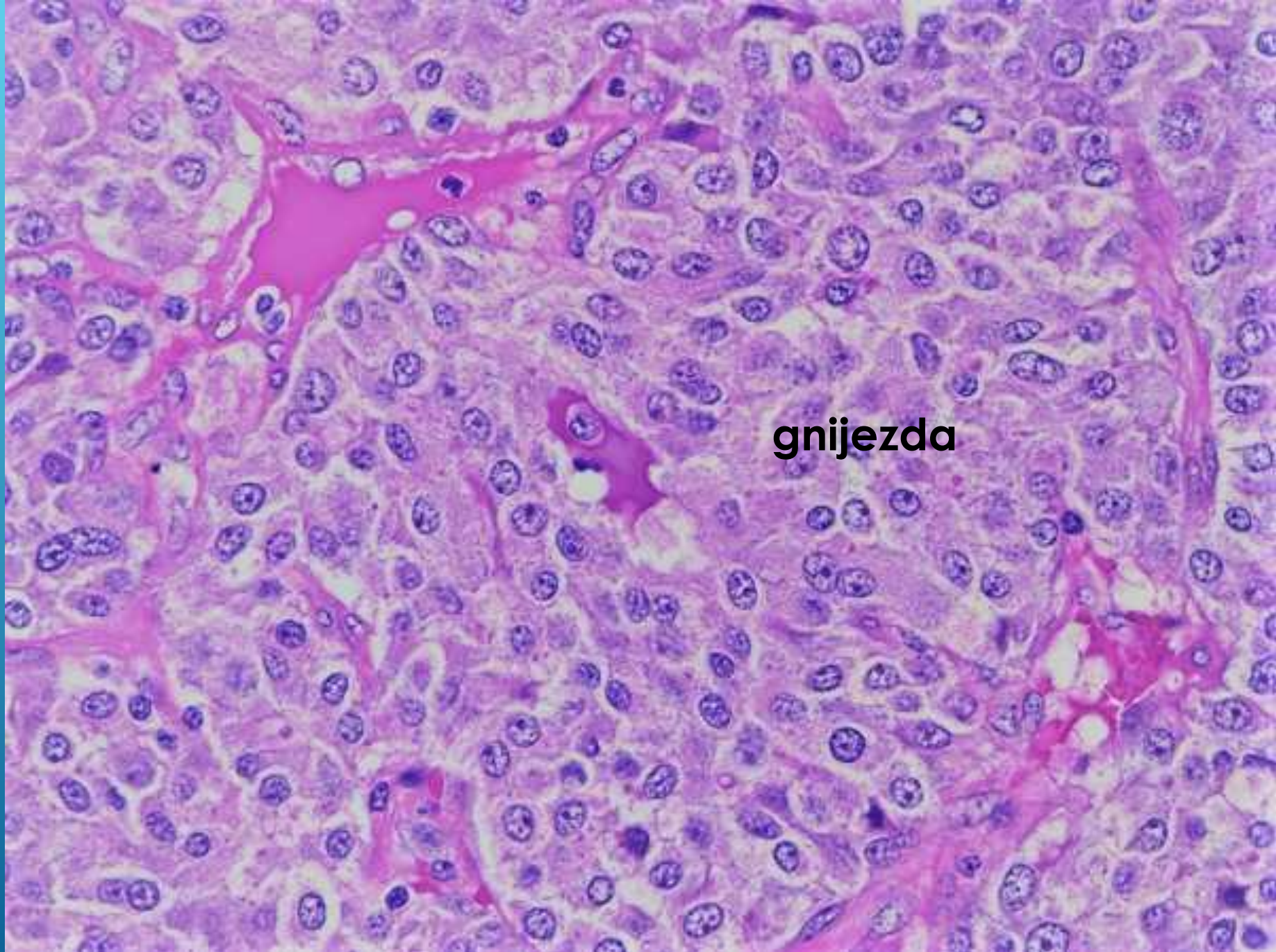
Congo red

Amiloid



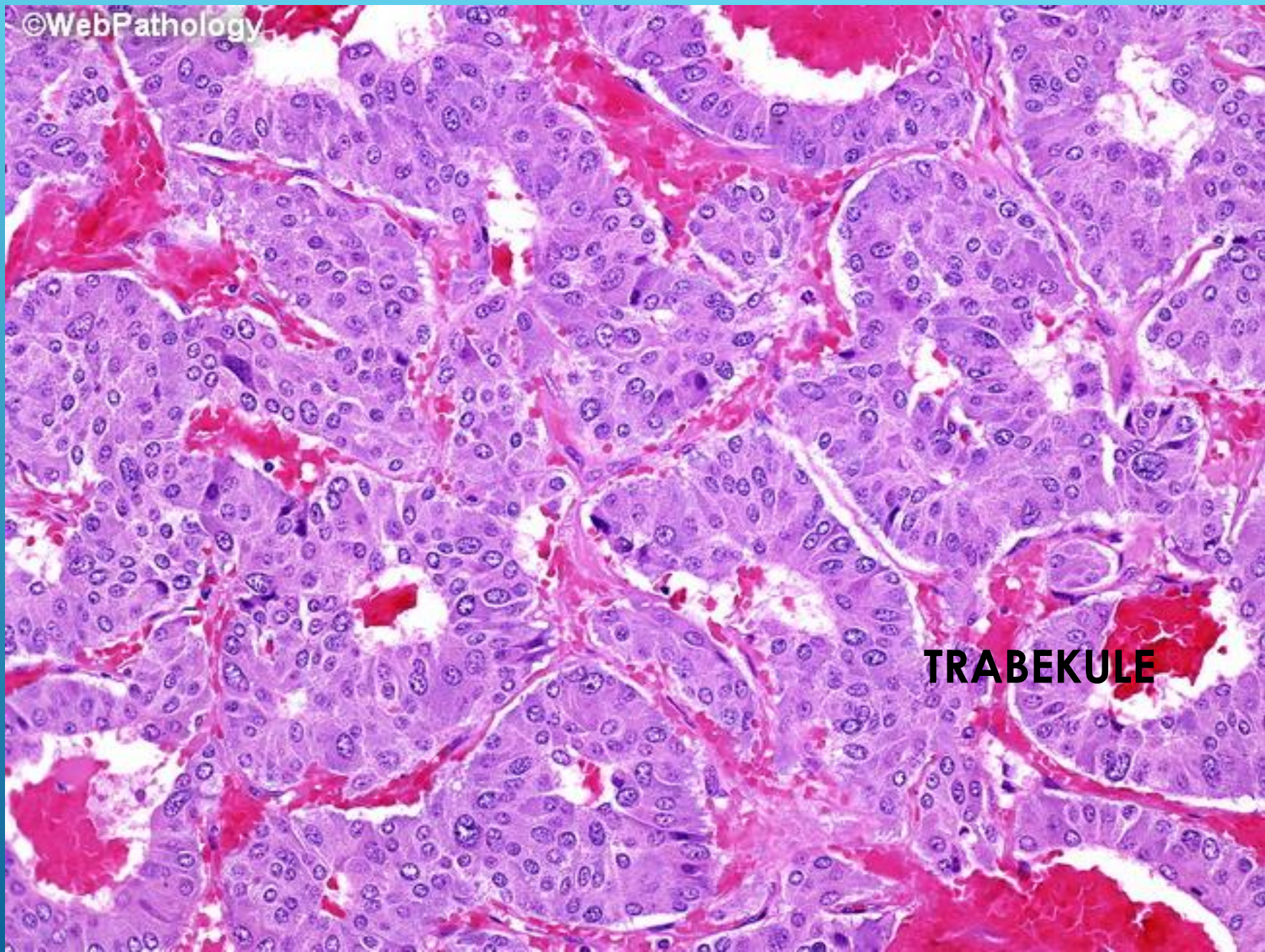


Pheochromocytoma has a well circumscribed cut surface and appears tan to red in color with focal hemorrhage



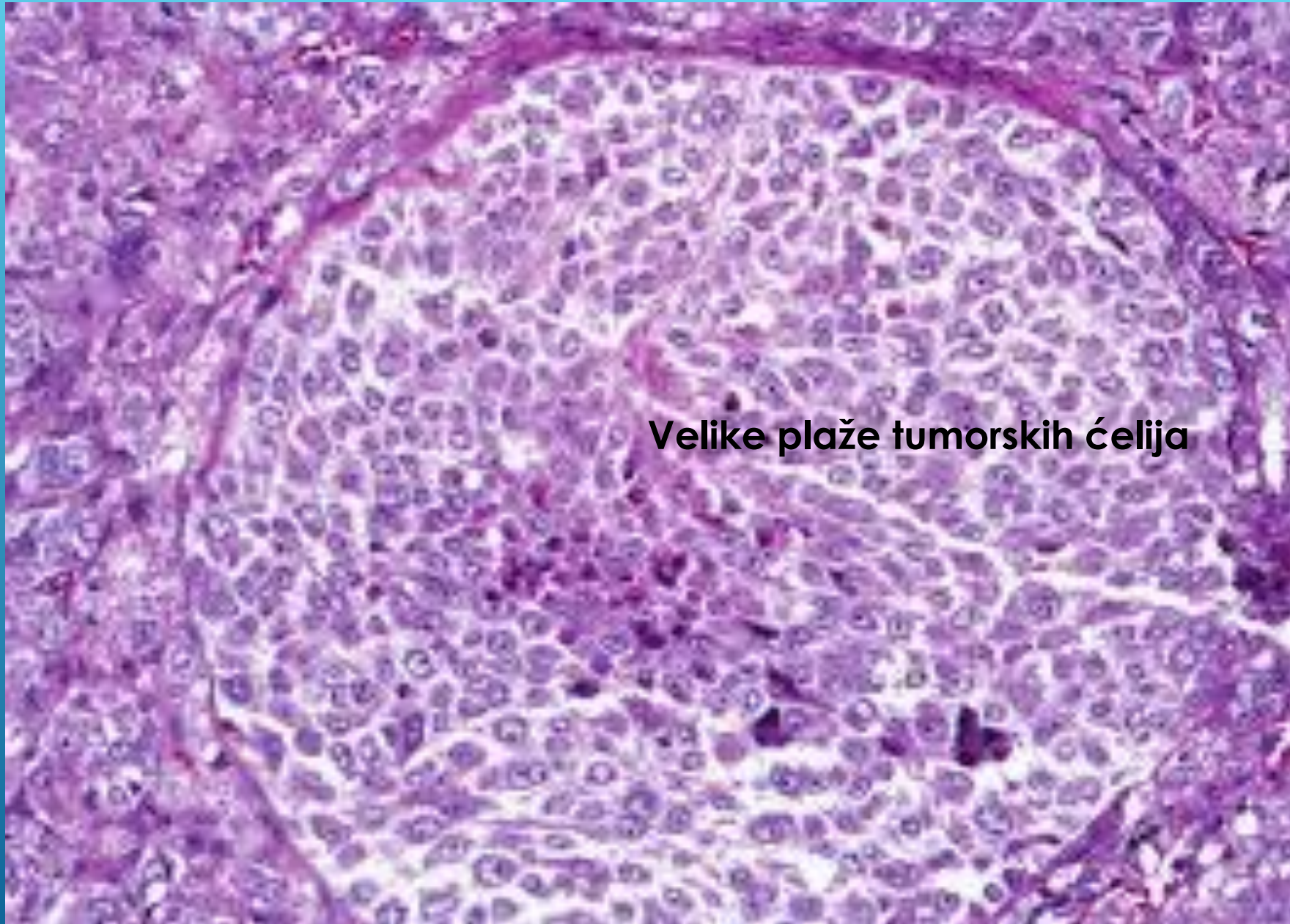
gnijezda





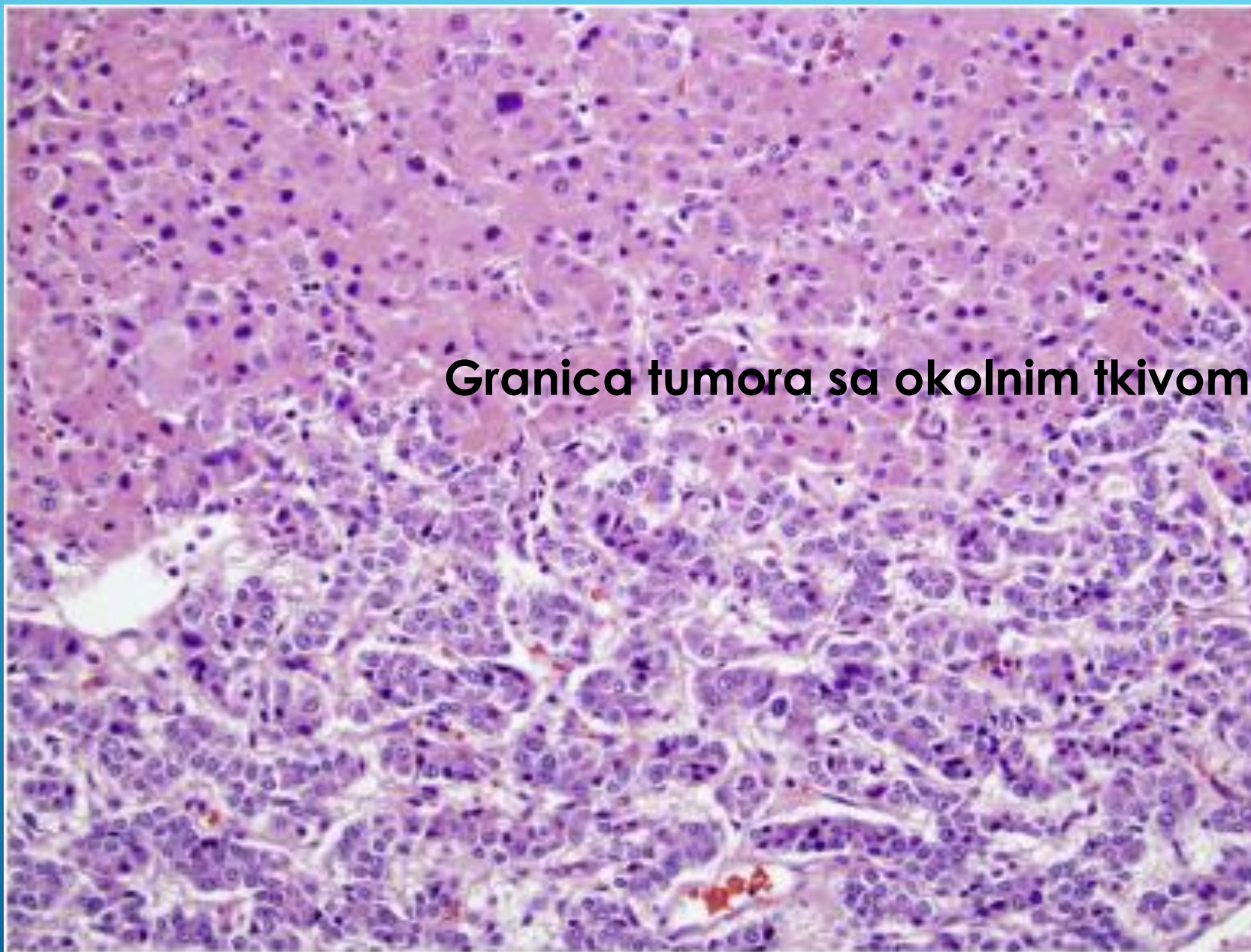
TRABEKULE





Velike plaže tumorskih ćelija





Granica tumora sa okolnim tkivom

