

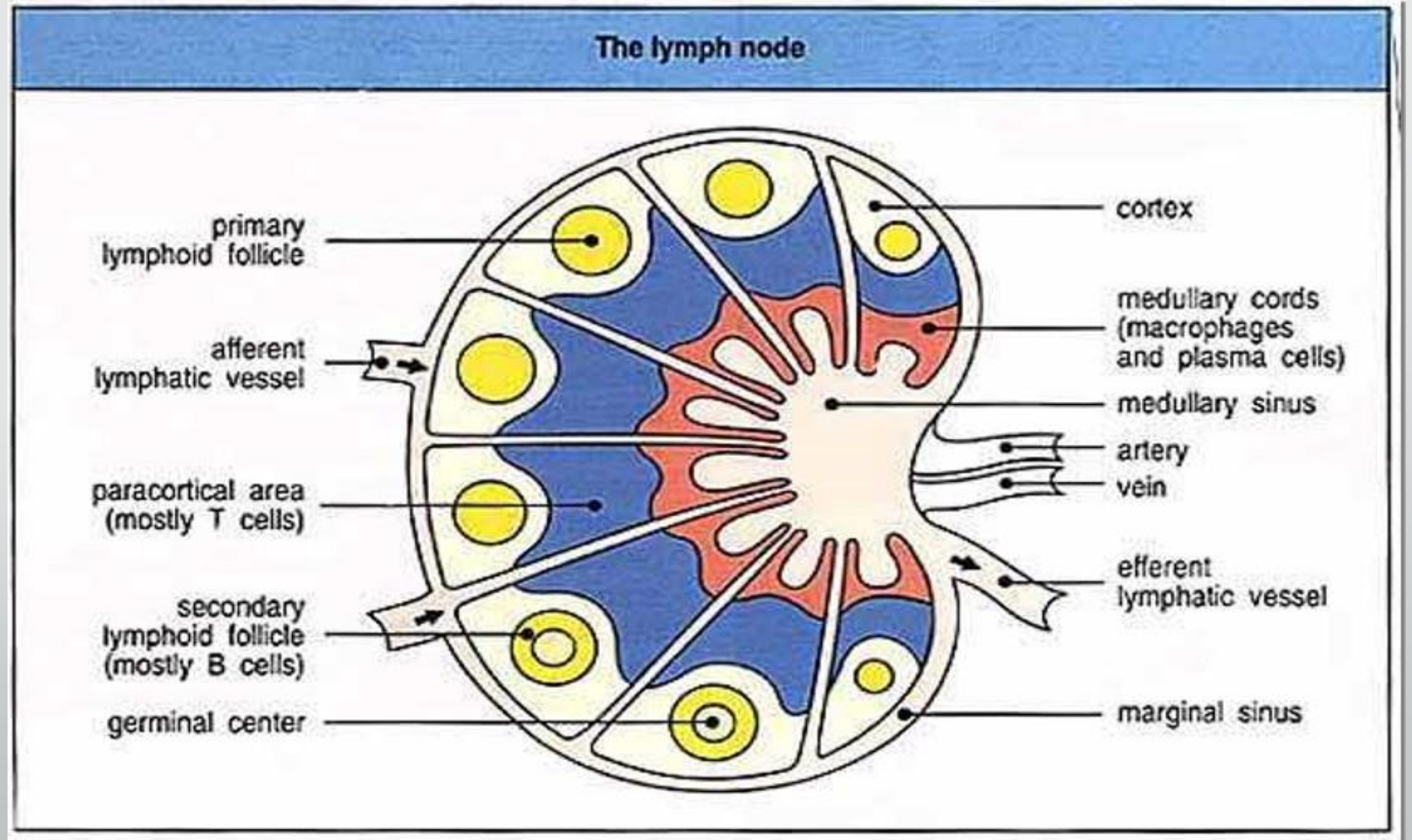


# **SPECIJALNA PATOLOGIJA**

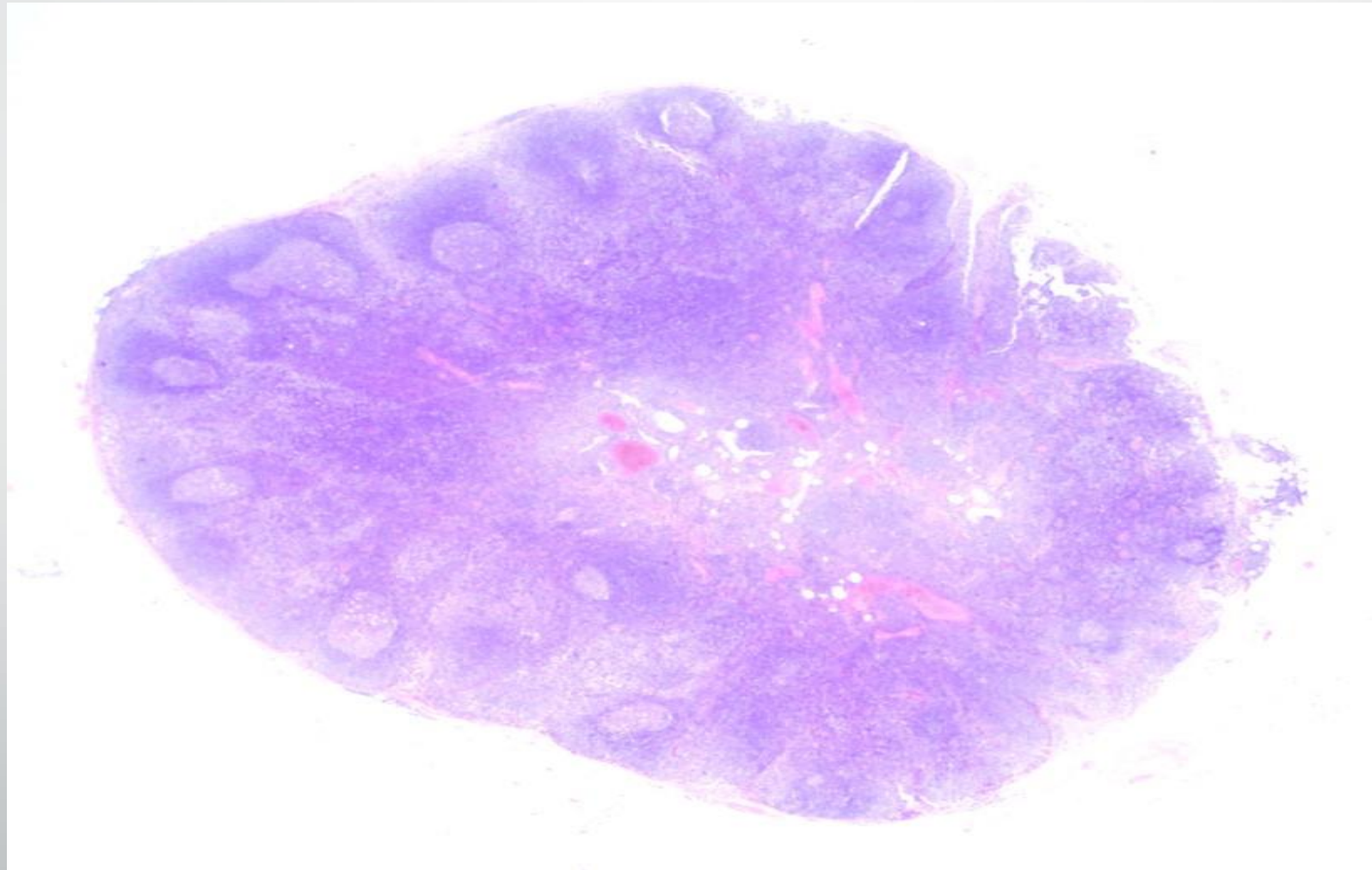
## **PATOLOGIJA LIMFNIH ČVOROVA**

Dr Tanja Nenezić

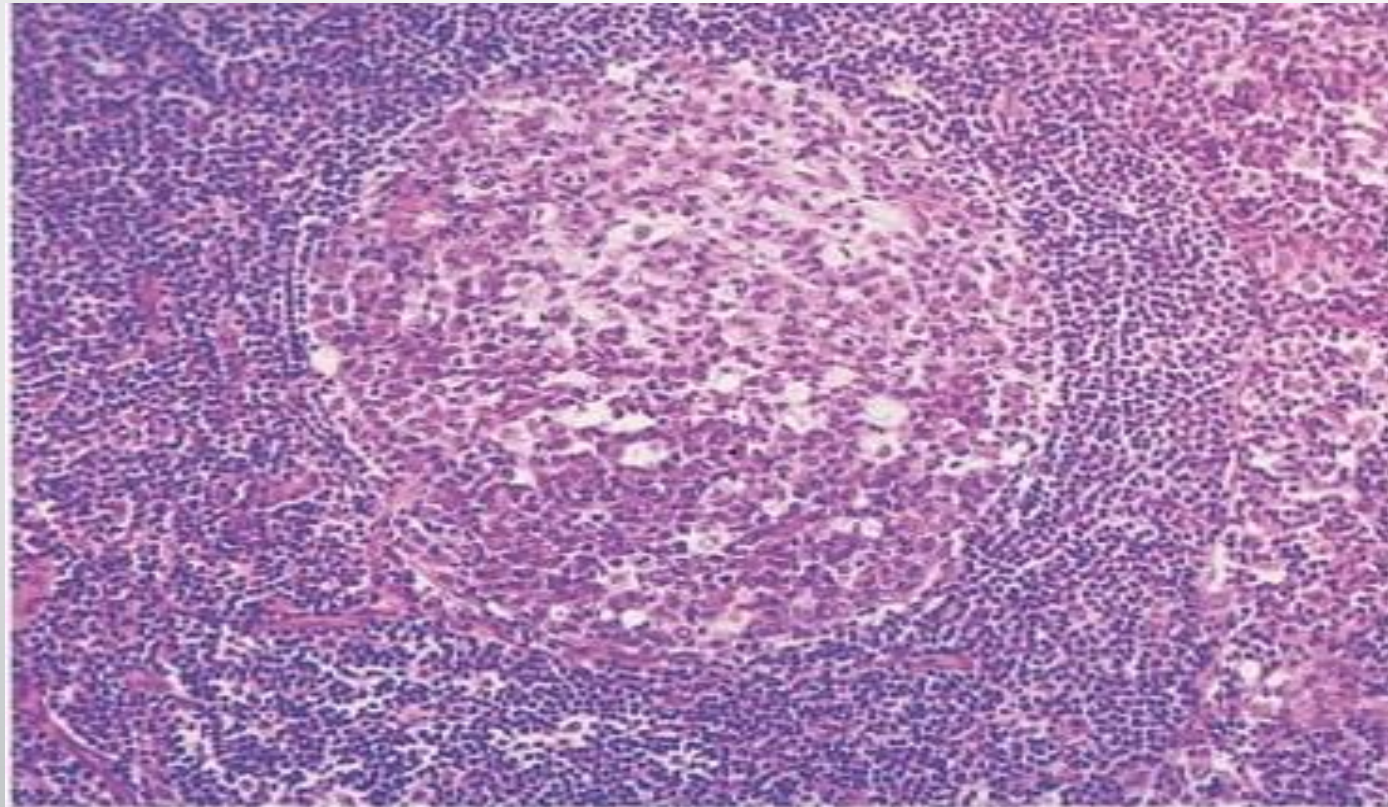
# Anatomija limfnog čvora



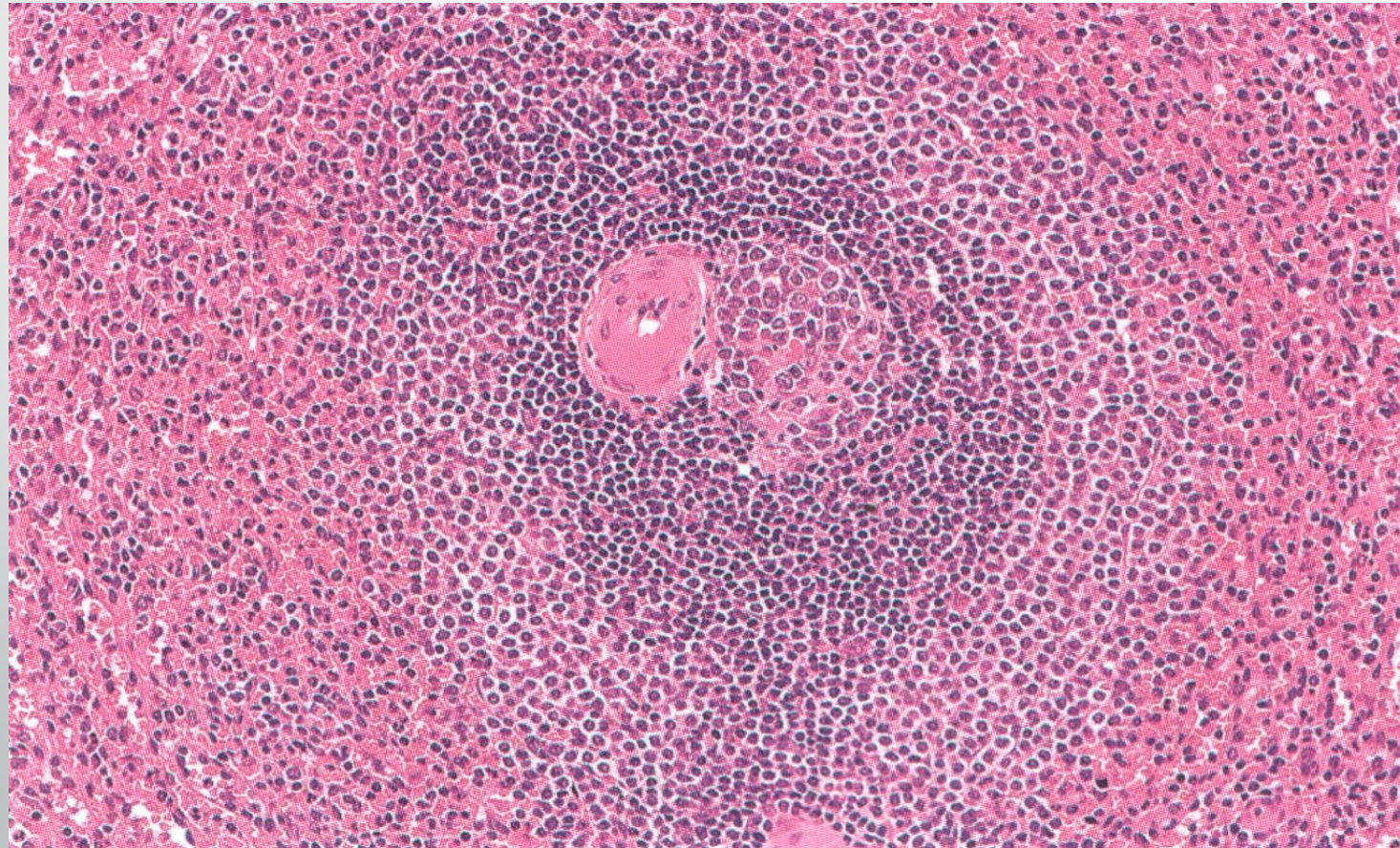
# Histologija limfnog čvora



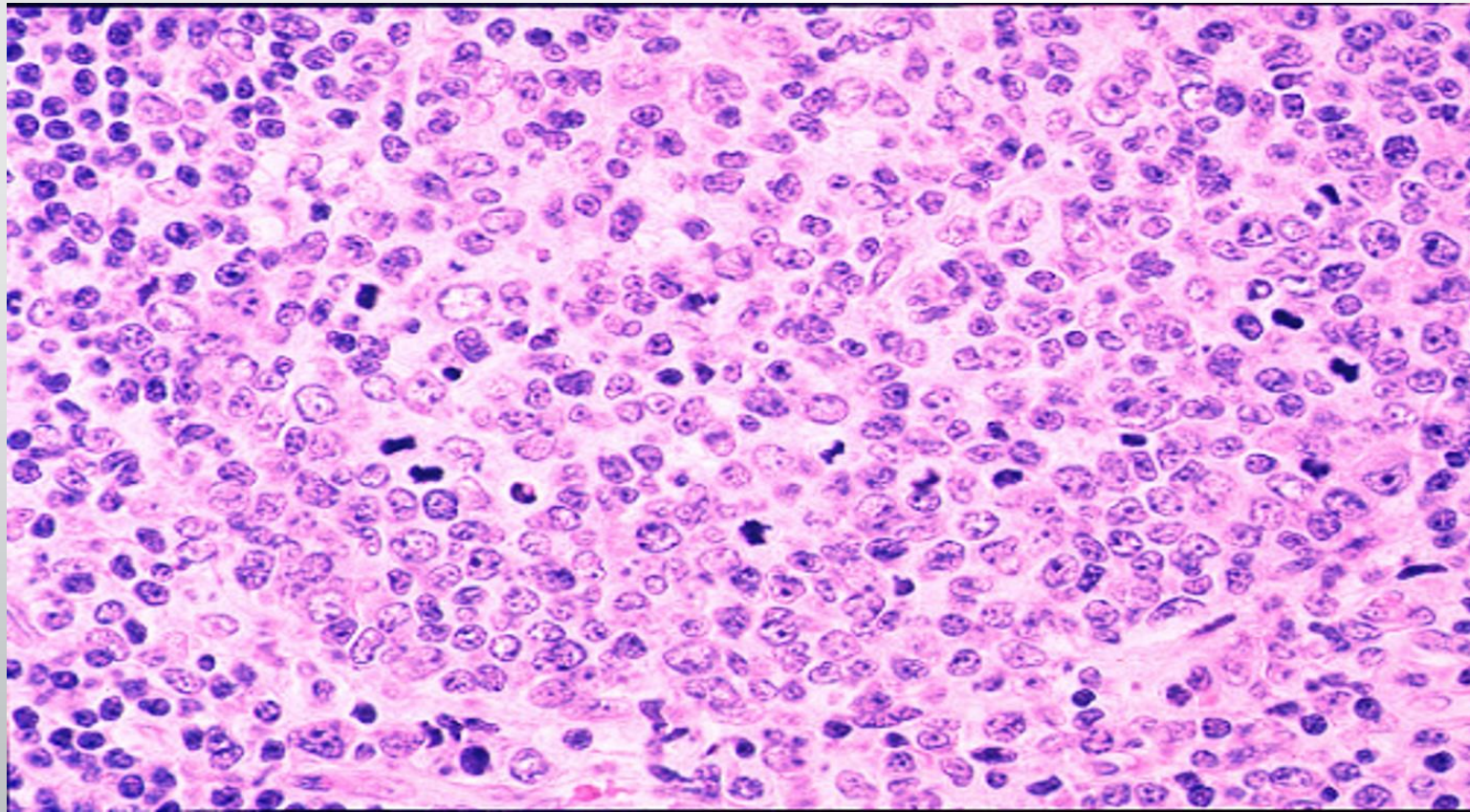
# Sekundarni limfni folikul



# Marginalna zona



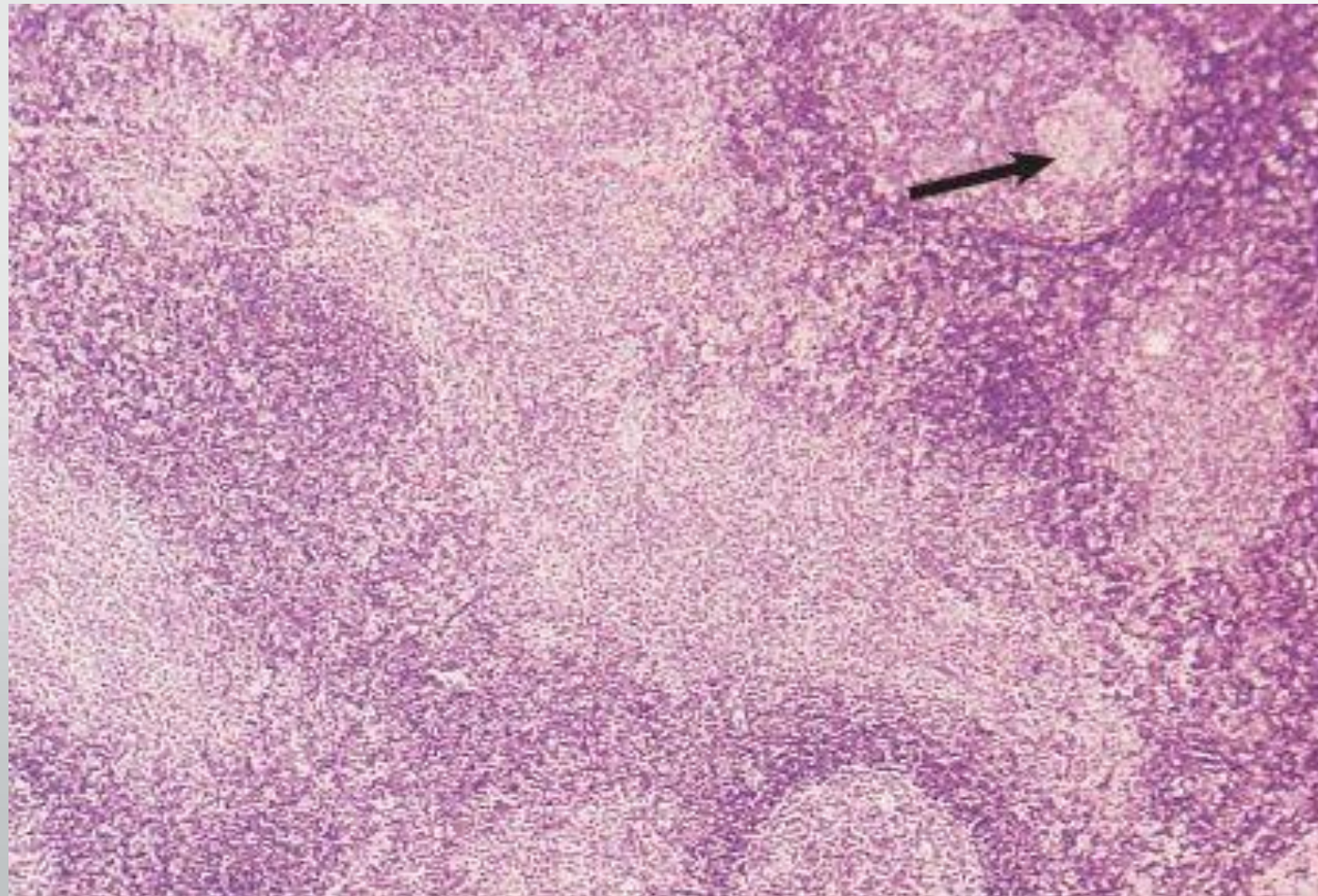
# Ćelije germinativnog centra



# Patologija limfnog čvora

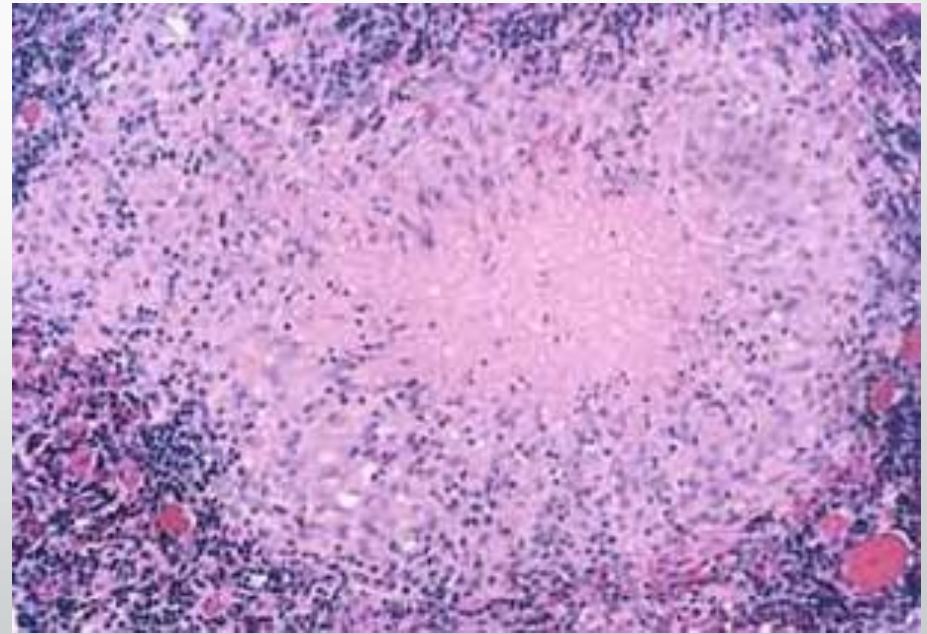
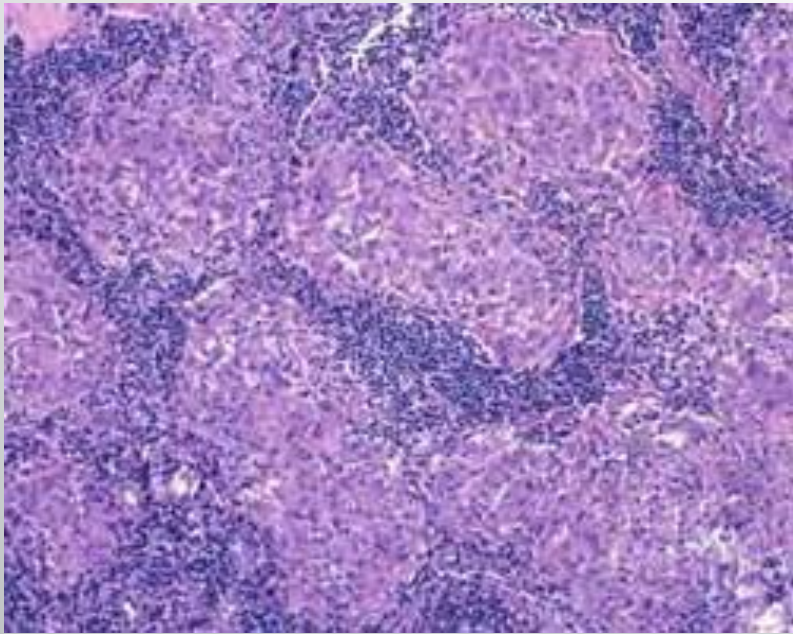
- Infektivne bolesti
- Autoimune bolesti
- Neoplastične bolesti
  - primarne
  - metastatske

# Toksoplazmoza limfnog čvora





# Granulomatozni limfadenitis



# Lymphoma

Maligni tumori limfoidnog tkiva

## Hodgkinov limfom (HL)

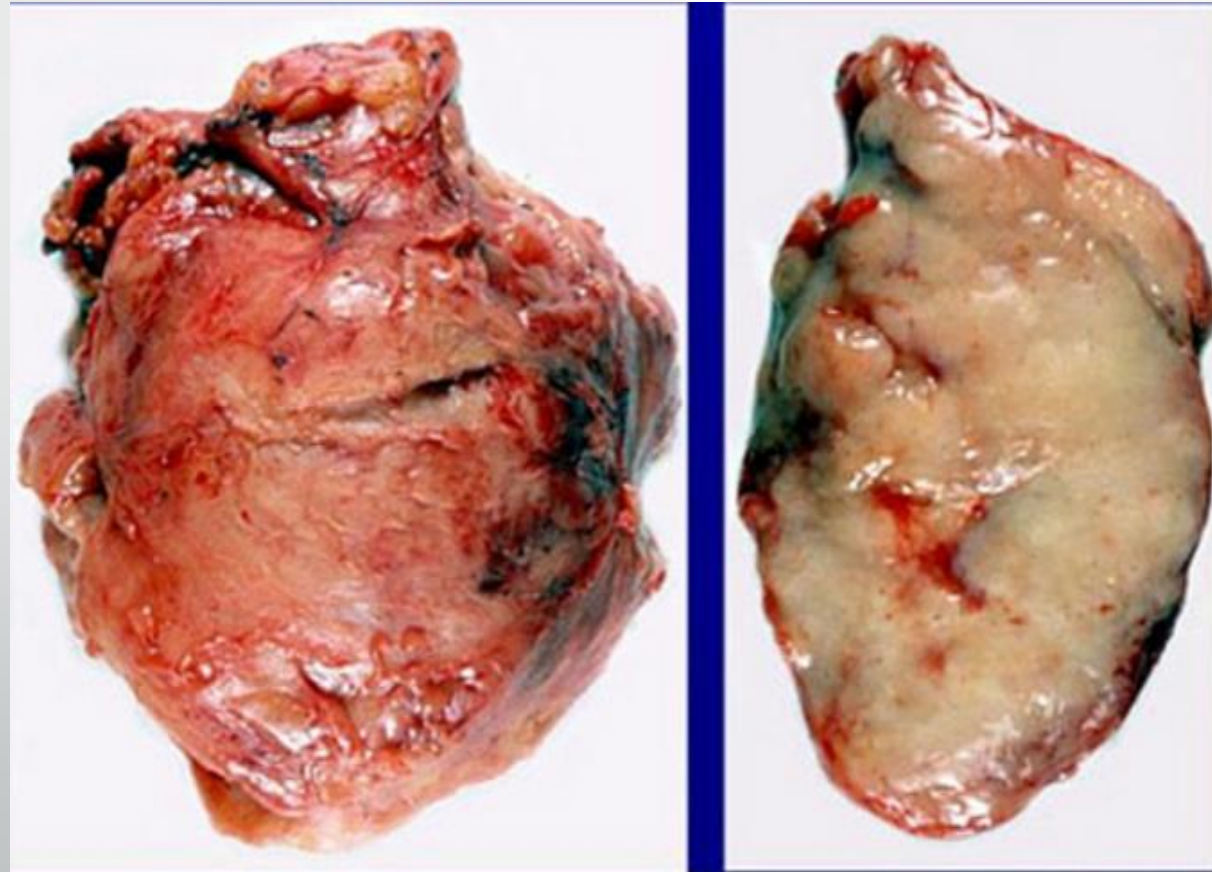
- Nodularna limfocitna predominacija
- Klasični Hodgkinov limfom

## Non-Hodgkin limfom (NHL)

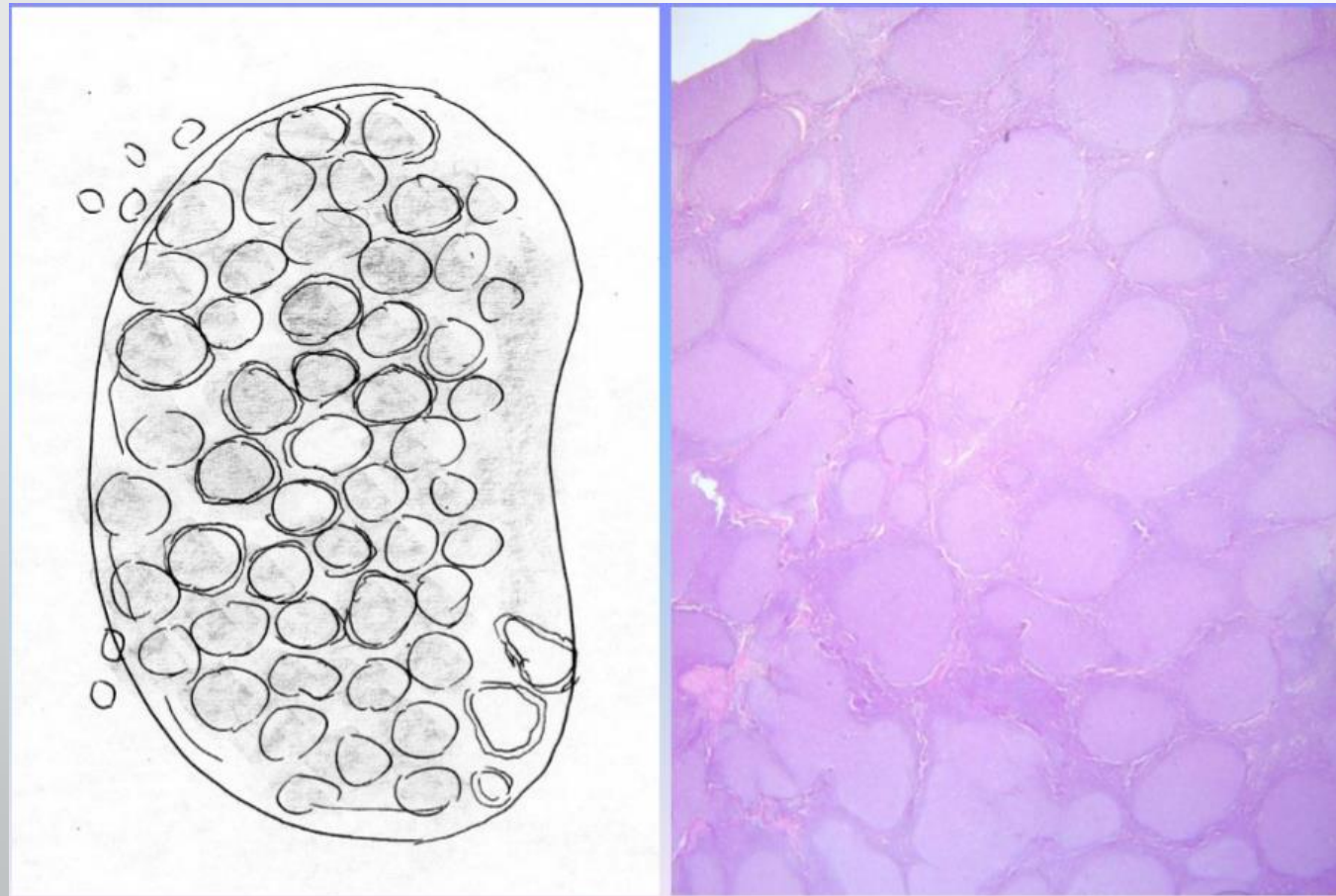
65% nodalni  
35% ekstranodalni

- B - ćelijske neoplazme (~85%)
- T - ćelijske neoplazme (~15%)
- Neoplazme histiocita i dendritičnih ćelija

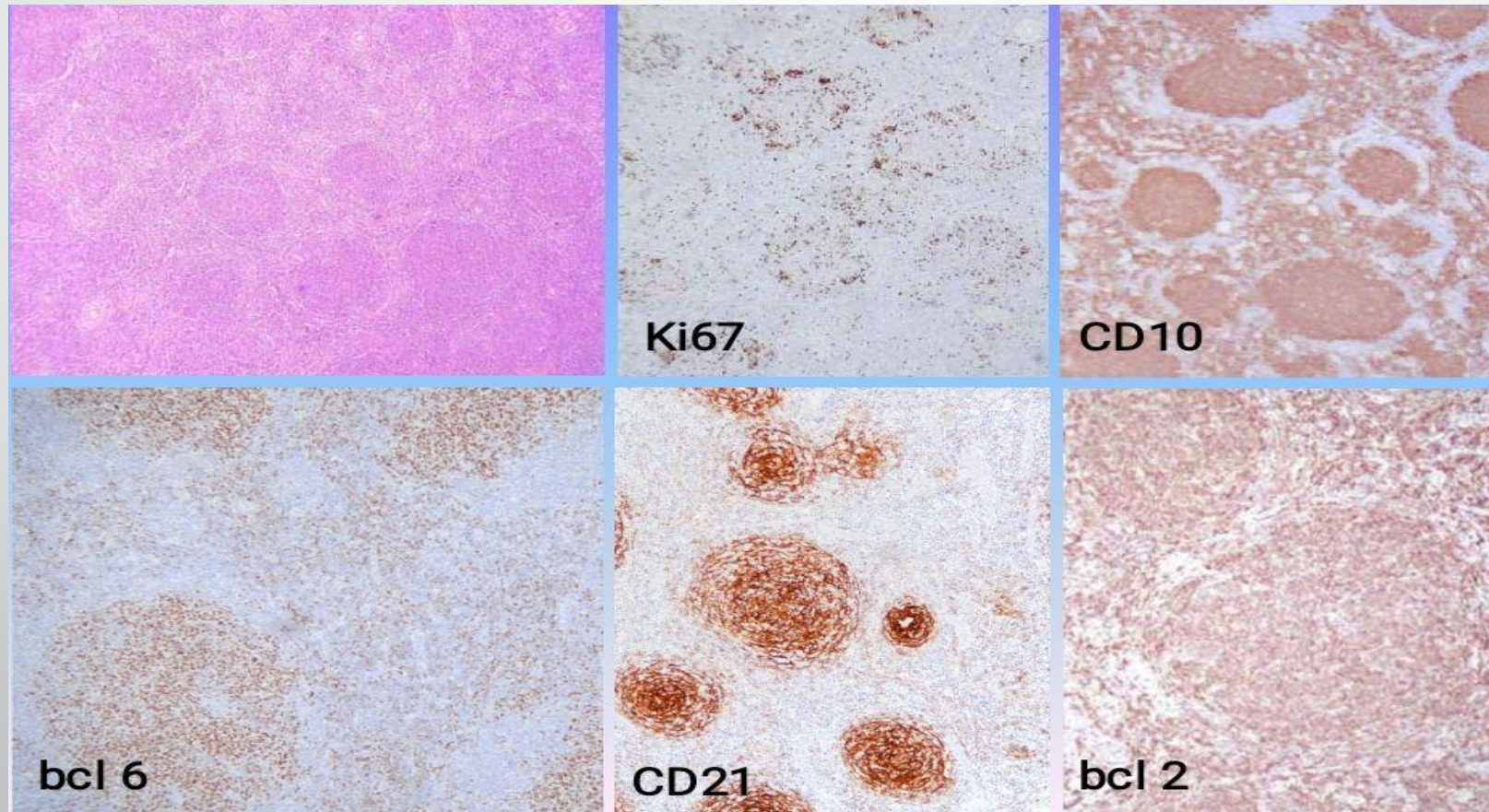
# Makroskopski nalaz



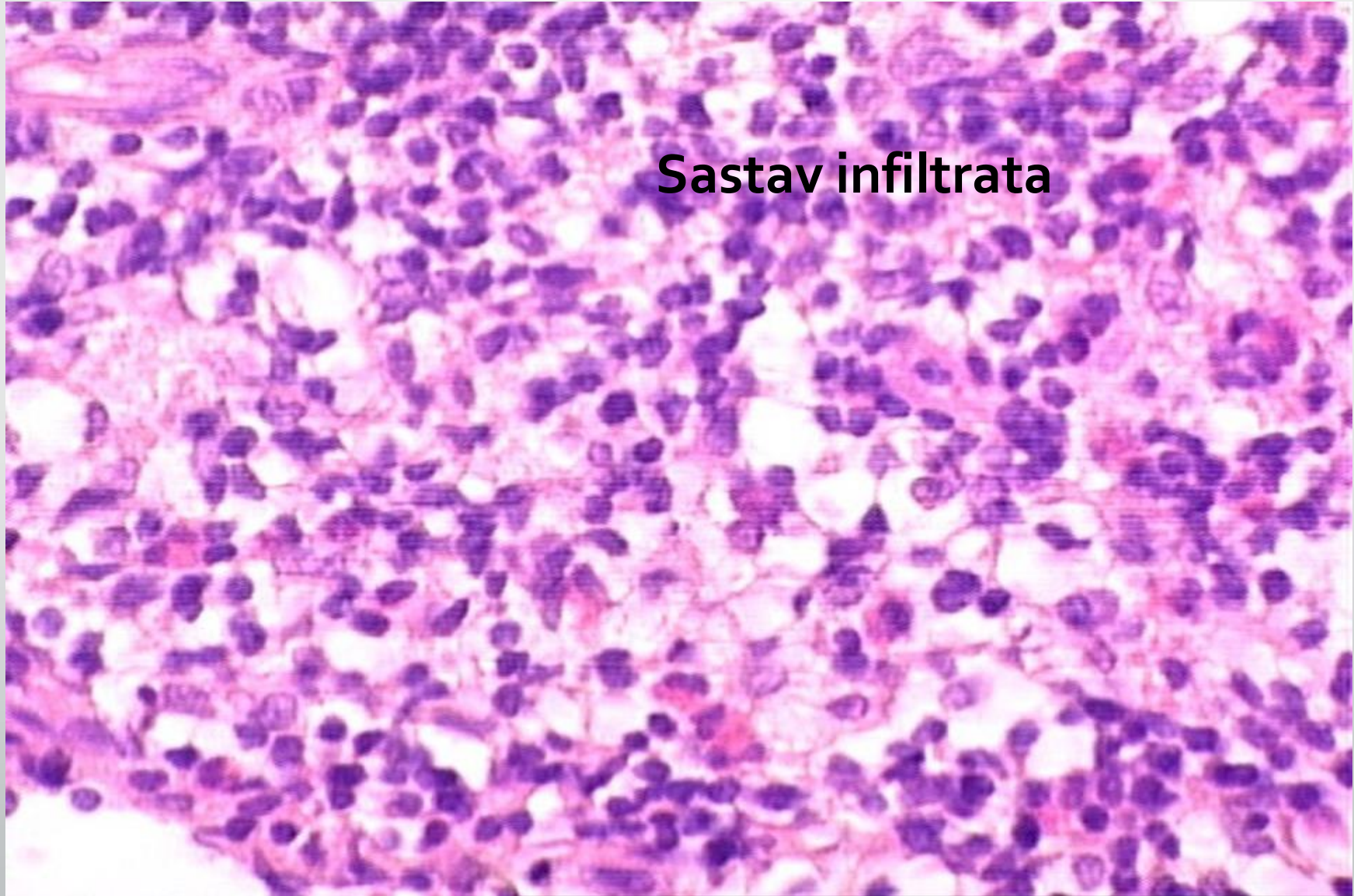
# Folikularni limfom

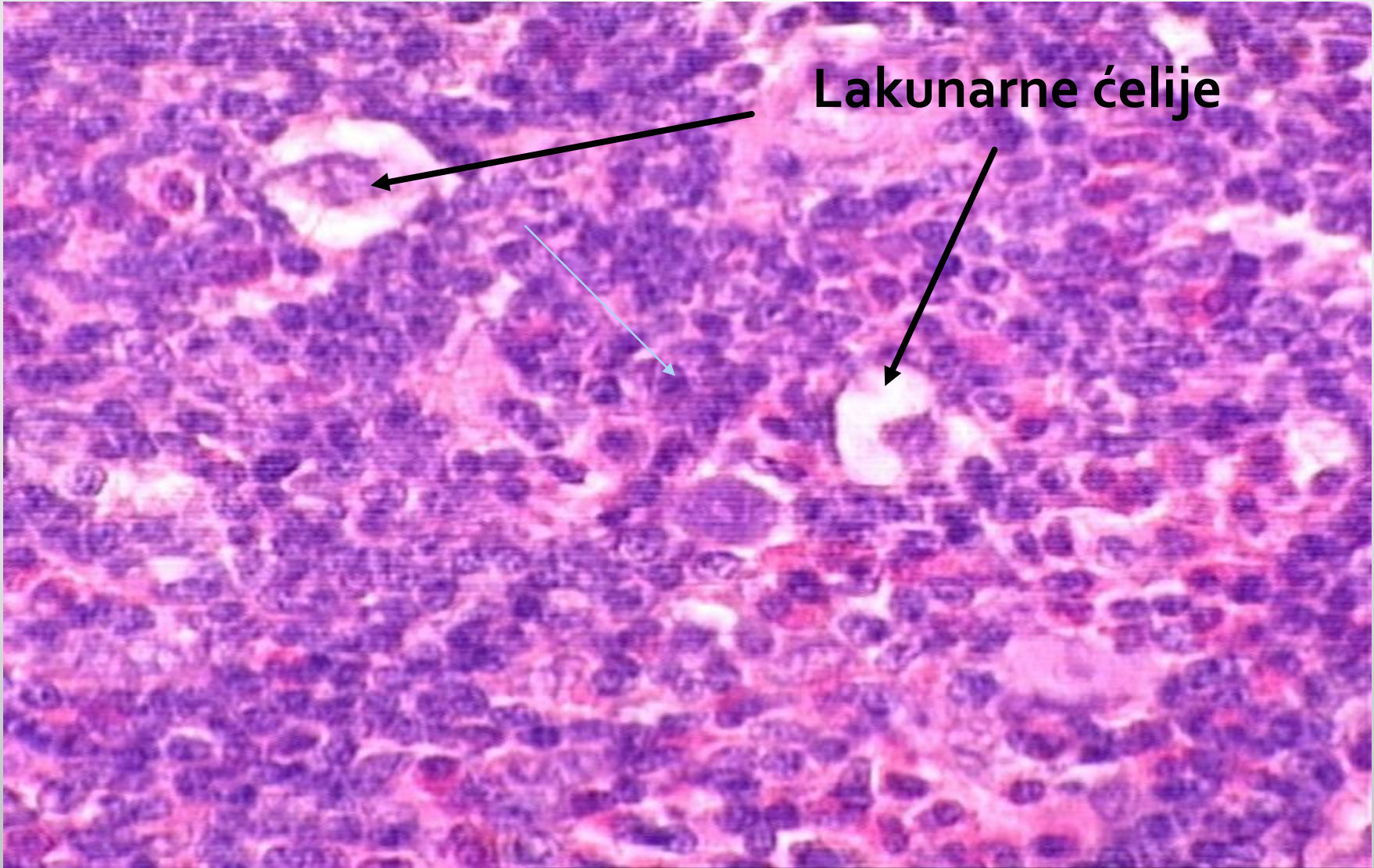


# Imunohistochemijski profil tumorskih ćelija

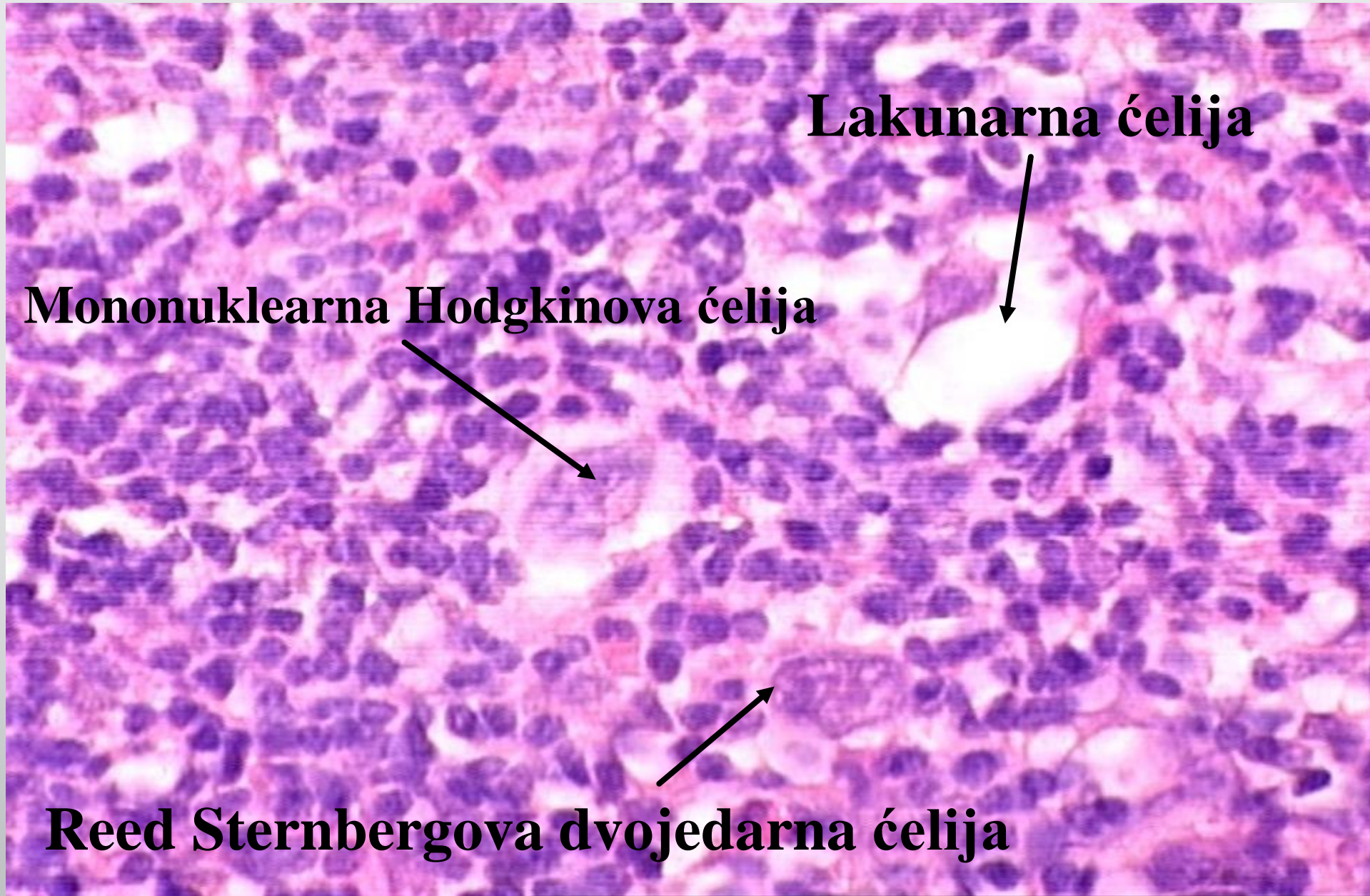


# Hodgkin lymphoma





Lakunarne ćelije

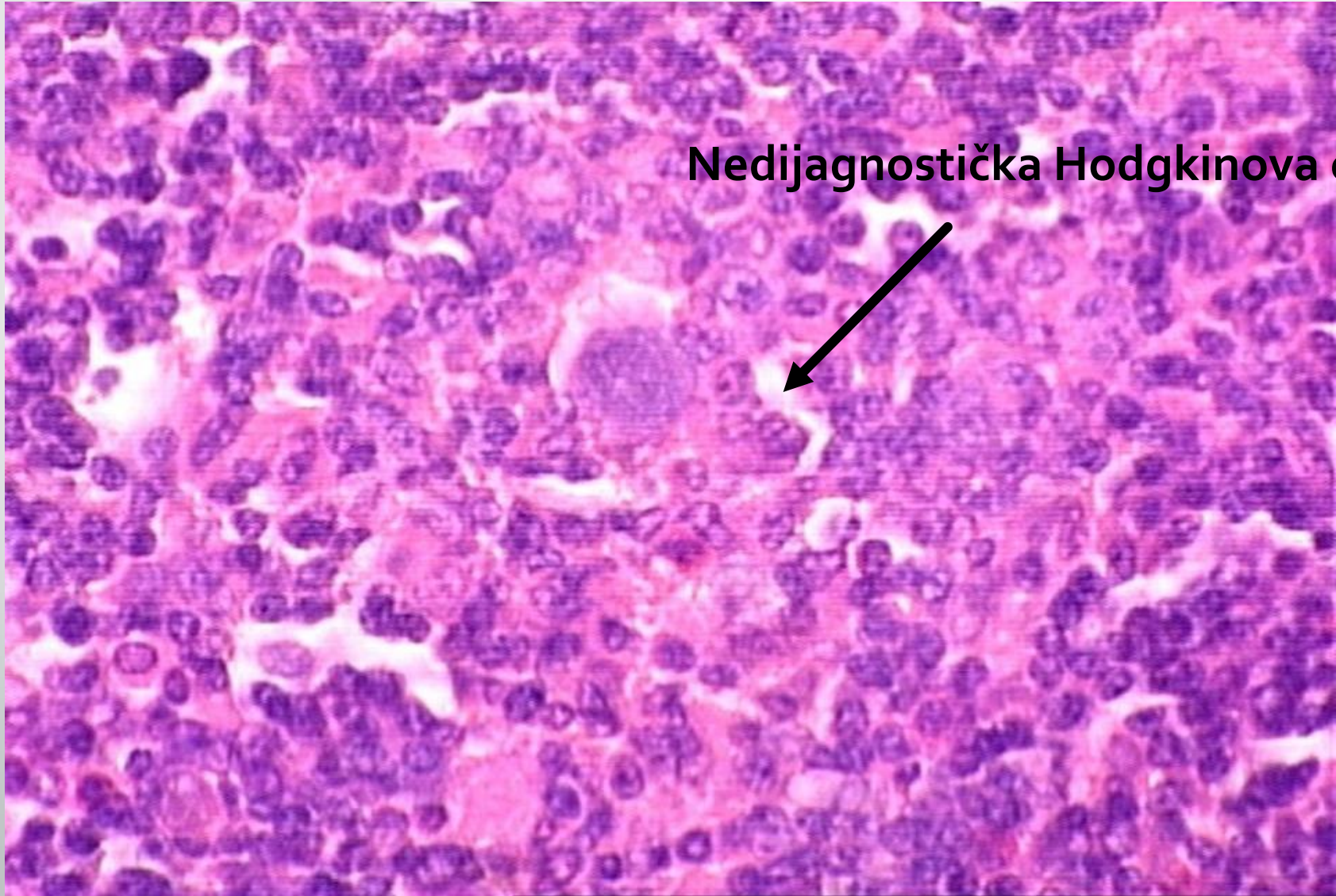


**Lakunarna ćelija**

**Mononuklearna Hodgkinova ćelija**

**Reed Sternbergova dvojedarna ćelija**





**Nedijagnostička Hodgkinova ćelija**

# Mononuklearna Reed Sternbergova ćelija

